

OHIO

2008



Induced Abortions in Ohio

Ohio Department of Health

Ted Strickland, Governor

Alvin D. Jackson, M.D., Director of Health

An equal opportunity employer/provider

Induced Abortions in Ohio, 2008

Prepared by:

**Center for Public Health Statistics and Informatics
Office of Performance Improvement**

**John Paulson
Supervisor**

**Donna L. Smith
Researcher**

October, 2009

Induced Abortion Program contact Persons

Center for Public Health Statistics and Informatics

Data Analysis

John Paulson

614-644-8507

Donna L. Smith

614-466-7545

Quality Assurance

Fetal Development

Resources Directory on request

Hanh Le

614-644-7726

Office of General Counsel

Legislation

Rachel Belenker

614-466-4882

TABLE OF CONTENTS

	Induced Abortion Summary	1
Figure 1	Resident Induced Abortions Ohio, 1976-2008	3
Figure 2	Selected characteristics of resident induced abortions in Ohio, 2008	5
Figure 3	Induced abortions reported in Ohio, by county of occurrence, 2008	7
Figure 4	Abortion ratio and abortion rate, by year, Ohio residents 1990-2008	9
Figure 5	Induced abortion rates per 1,000 women by age, Ohio residents, 2003-2008	11
Figure 6	Induced abortion ratio, by age group, Ohio residents, 2003 - 2008	13
Figure 7	Total Induced abortions by weeks of gestation, by year, 1990-2008	15
Table 1	Induced Abortion Summary Tables, Ohio, 2008	17
Table 2	Selected characteristics of induced abortions reported in Ohio, 1995-2008	18
Table 3	Resident induced abortions reported in Ohio, by county of residence, 1995-2008	20
Table 4	Resident induced abortions reported in Ohio, by county of residence and age, 2008	22
Table 5a	Resident induced abortions reported in Ohio, by selected counties, race, and broad age groups, 2008	24
Table 5b	Resident induced abortions reported in Ohio, by selected counties, race and age, 2008	28
Table 6	Induced abortions reported in Ohio, by county of occurrence, 1995-2008	30

Table 7	Induced abortions reported in Ohio, by method of termination and county of occurrence, 2008	31
Table 8	Total induced abortions reported in Ohio, by gestational age, 2008	32
Table 9	Resident induced abortions reported in Ohio, by age of women obtaining abortion and by number of prior induced abortions, 2008	33
Table 10	Total induced abortions in Ohio with post abortion complications, by type of complication, 2008 (Data Source is 'Post-Abortion Care Report for Complications')	34
Table 11	Total induced abortions in Ohio with post abortion complications, by type of complication and gestation period, 2008 (Data Source is 'Post Abortion Care Report for Complications')	35
Table 12	Resident Induced Abortions by Zip Code of Patient, Ohio, 2008	36
Appendix I	Confidential Abortion Report form	43
Appendix II	Post-Abortion Care Report for Complications form	45

Induced Abortion Summary

Background

Induced abortions must be reported to the Ohio Department of Health by the physician who performed the abortion, using the form “Confidential Abortion Reports.” The report includes demographic and medical history information about the woman obtaining the abortion and information about the medical procedure. These reports are used to produce statistical reports about abortions occurring in Ohio. The forms are confidential: no identifying information about women who obtain abortions is collected except the medical record number. Physicians providing post abortion care for complications are required to file a “Post Abortion Care Report for Complications.” It is not possible to link these post-abortion reports to the “Confidential Abortion Reports.” Both types of reports contain information about complications and are used to create statistical reports about post-abortion complications. This report presents information derived from both “Confidential Abortion Reports” and “Post-Abortion Care Reports for Complications” for 2008 in Ohio (reporting forms are included as Appendices I and II).

Characteristics of Induced Abortions Reported in Ohio, 2008

Induced abortion statistics are available for Ohio dating back to 1976. In 1994 the reporting form was improved. Many trend comparisons in this summary date back to 1996. We also compare the 2007 abortions to 2008 occurrences to show more recent trend developments.

A total of 29,613 induced pregnancy terminations were reported in Ohio for 2008, including 27,672 for Ohio residents (93.4%). The number of total abortions performed in Ohio has seen a decline annually since 2000. (Figure 1)

Approximately one eighth of women who obtained abortions were under 20 years of age, with another third between the ages of 20-24 years of age (figure 2). The age distribution of women obtaining abortions has remained fairly unchanged since 1994. Approximately 82% of women who obtained an abortion were unmarried. The marital status distribution has remained constant since 1994. Fifty-four percent of resident women who obtained abortions were White, 37% were African American, and 9% were other races or unknown. Three and one half percent of abortions were obtained by women of Hispanic origin.

The 2008 Ohio abortion rate was 12 per 1,000 women ages 15-44 years (figure 4). The most recent comparable rate for the US was higher at 15 per 1,000 women (year 2005). The 2008 Ohio abortion ratio was 183 abortions per 1,000 live births, a ratio that is also lower than the 2004 US abortion ratio of 233 abortions per 1,000 live births.

In 2008, approximately 35% of women obtaining abortions in Ohio reported no prior pregnancies. Over half of all induced abortions involved pregnancies of less than 9 weeks (56%), with approximately 28% involving pregnancies of 9-12 weeks (figure 2). The proportion involving abortions of less than 9 weeks increased from 42% in 1995, while the proportion between 9 and 12 weeks declined from 40% to 28% (figure 7). There were 603 abortions involving pregnancies of 20 or more weeks, a number that decreased from 712 in 1995. All reported abortions were obtained in eight major metropolitan areas of Ohio. 27,591 abortions were provided in licensed ambulatory surgical facilities, and 81 were provided in hospitals (less than 1%).

There were changes between 2002 and 2008 in method of termination for induced abortions performed in Ohio. Curettage remained the most frequent method of termination at 71% in 2008. That method has decreased since 2001, when 87% of terminations were by curettage. Medical/non-surgical procedures are the second most common method (17%). Dilation and evacuation was the third most common method (9%).

Specific details about medical/non-surgical procedures have not been keyed from Ohio abortion reports, which makes it difficult to tabulate the specific procedures used in Ohio. We did, however, examine a sample of these reports in 2005 and the majority of these medical/surgical procedures were methotrexate and misoprostol administration. The medical procedures used most commonly in early abortions nationally are methotrexate with misoprostol and mifepristone with misoprostol (Goldberg AM, Greenberg MB, Darney PD. Drug therapy: miosprostol and pregnancy. N Engl J Med 2001;344:38-47). The FDA approved mifepristone for medical abortions in 2000. That approval was expected to shift many of the early abortions from surgical to non-surgical methods.

County of residence for women obtaining abortions is reported in tables 3, 4, 5a, and 5b. In accordance with Ohio Department of Health disclosure limitation policies, some counties were removed from tables 5a and 5b. The removed counties had fewer than 25 female residents in the reported age/race categories.

Figure 1. Resident induced abortions, Ohio, 1976 – 2008

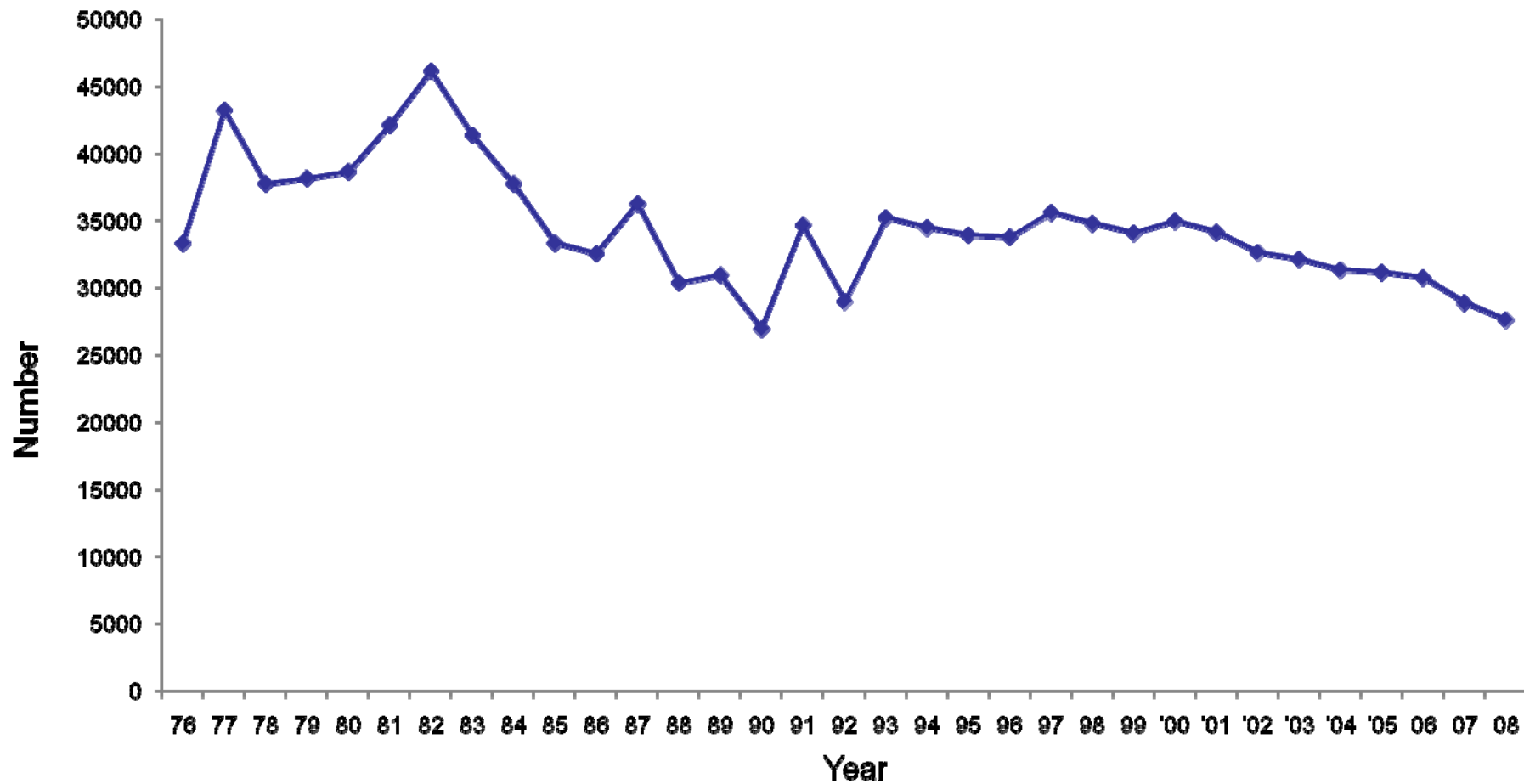
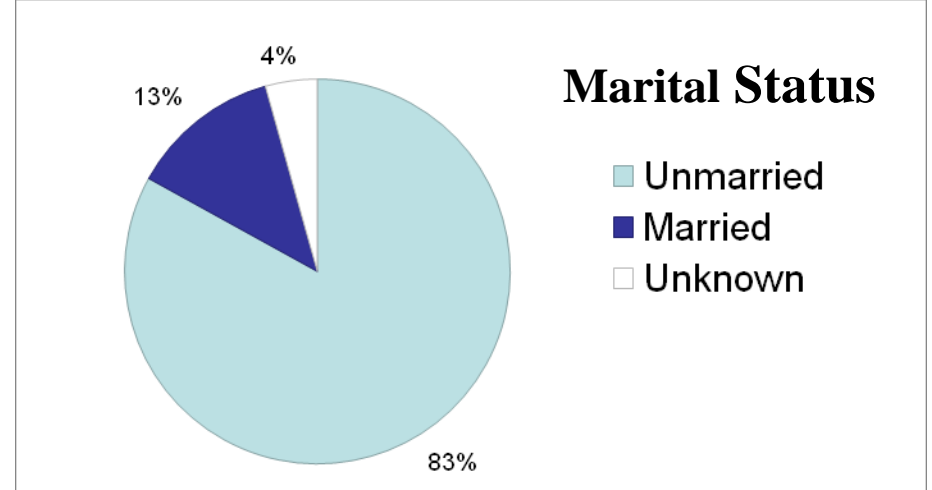
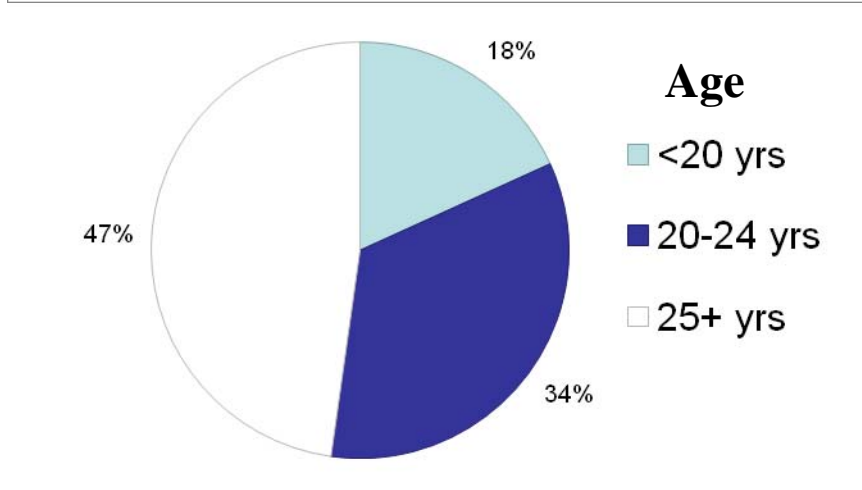
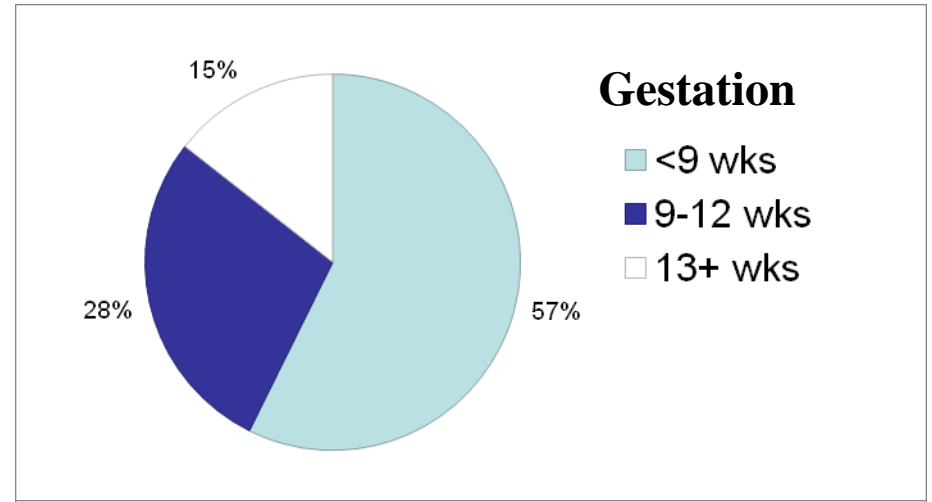
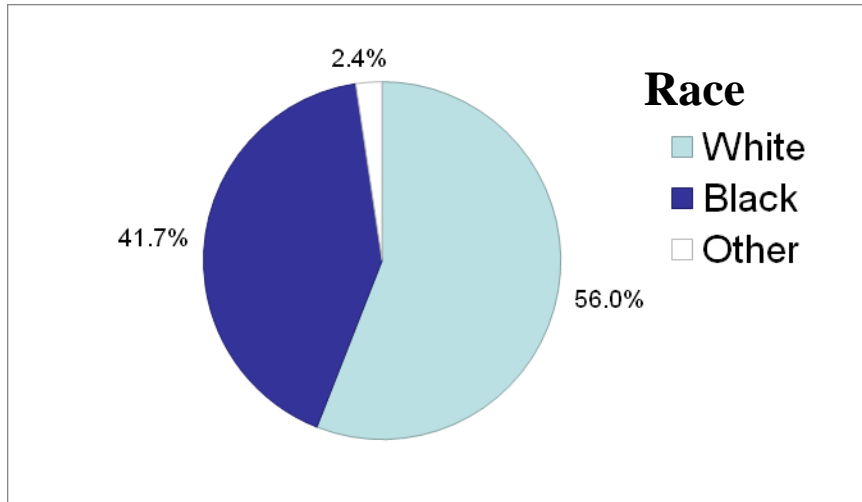


Figure 2. Selected characteristics of resident induced abortions in Ohio, 2008



Excludes Unknown unless otherwise stated

Figure 3. Induced abortions reported in Ohio, by county of occurrence, 2008

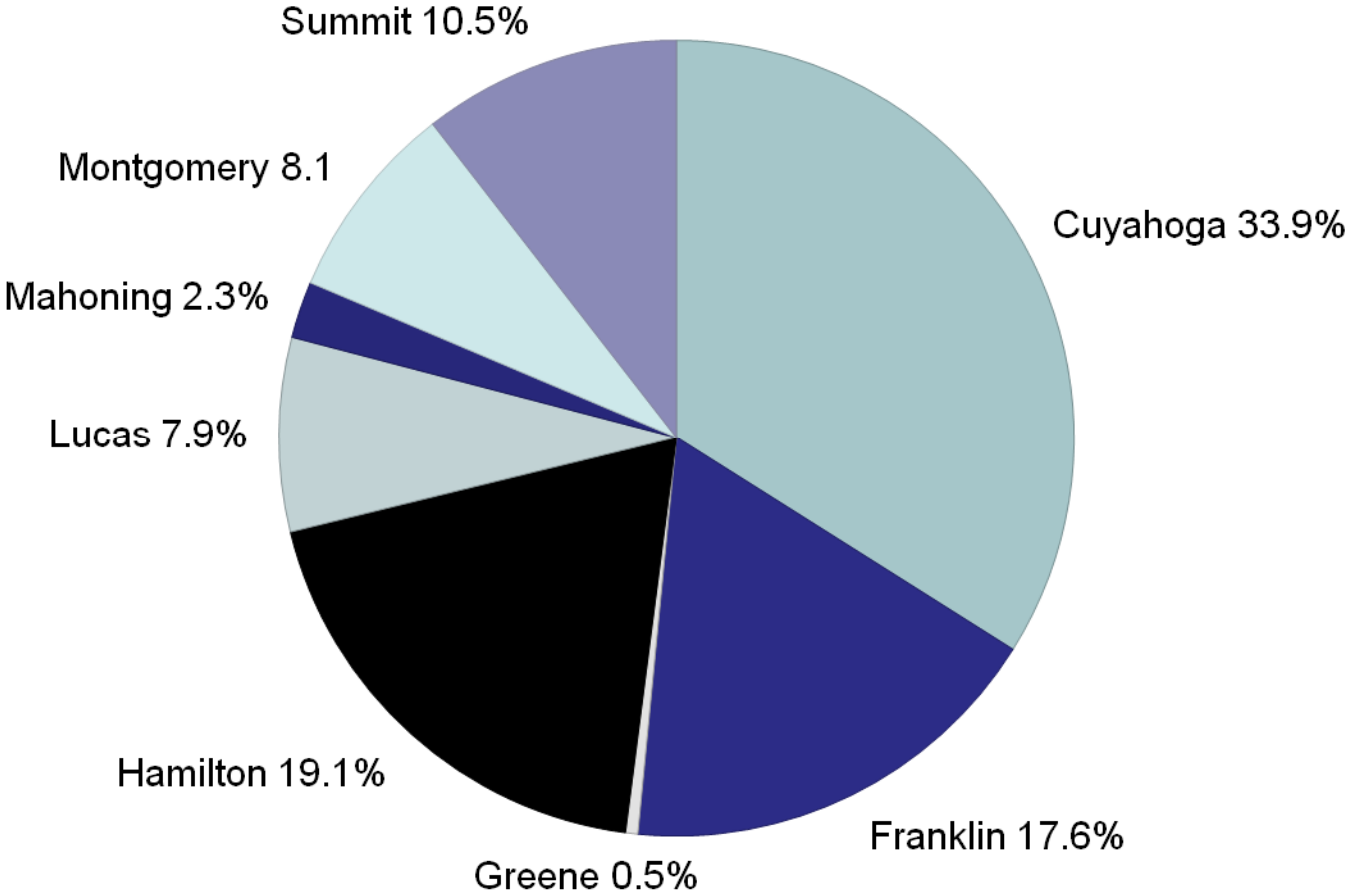
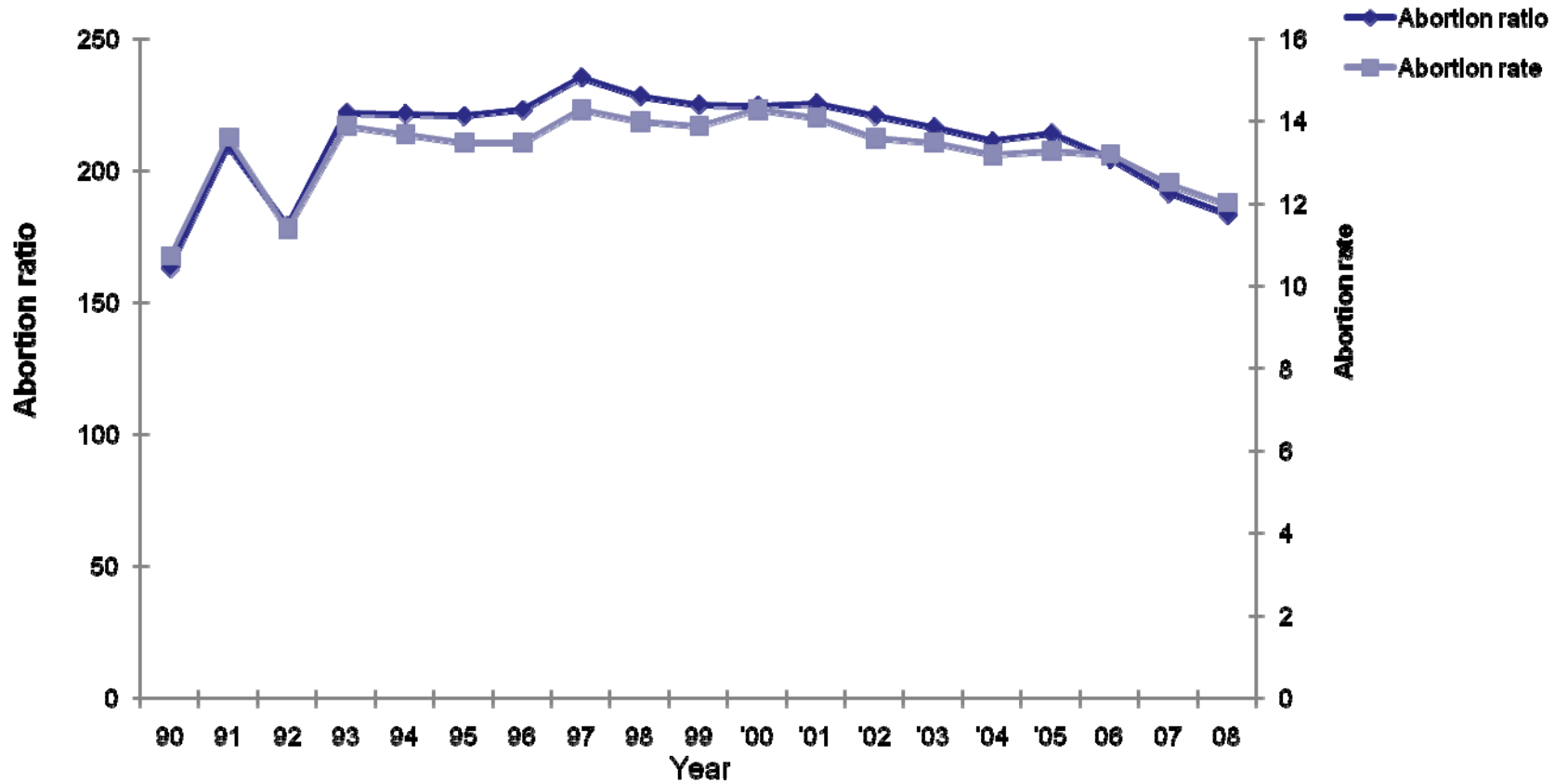
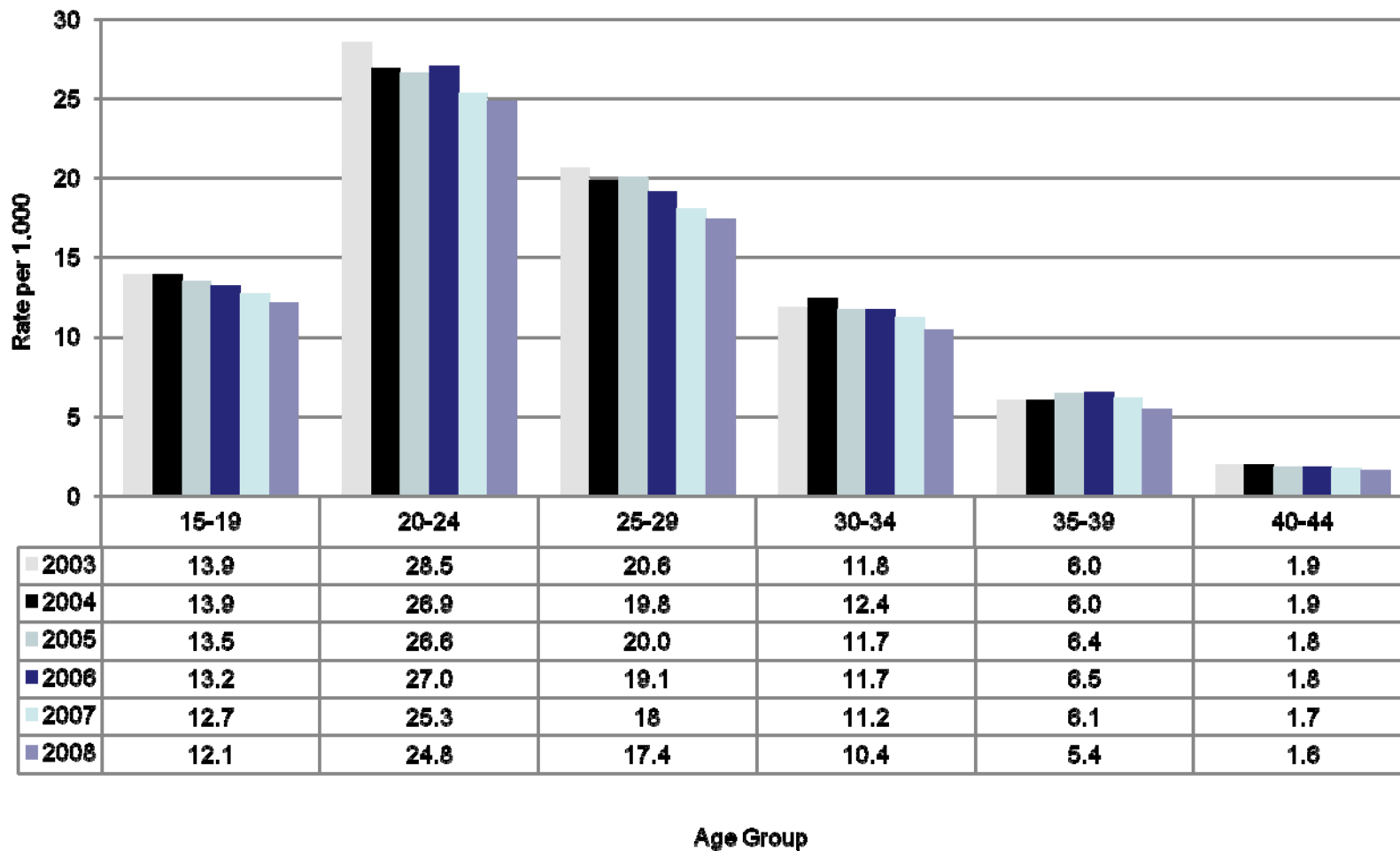


Figure 4. Abortion ratio and abortion rate, by year, Ohio residents, 1990 - 2008



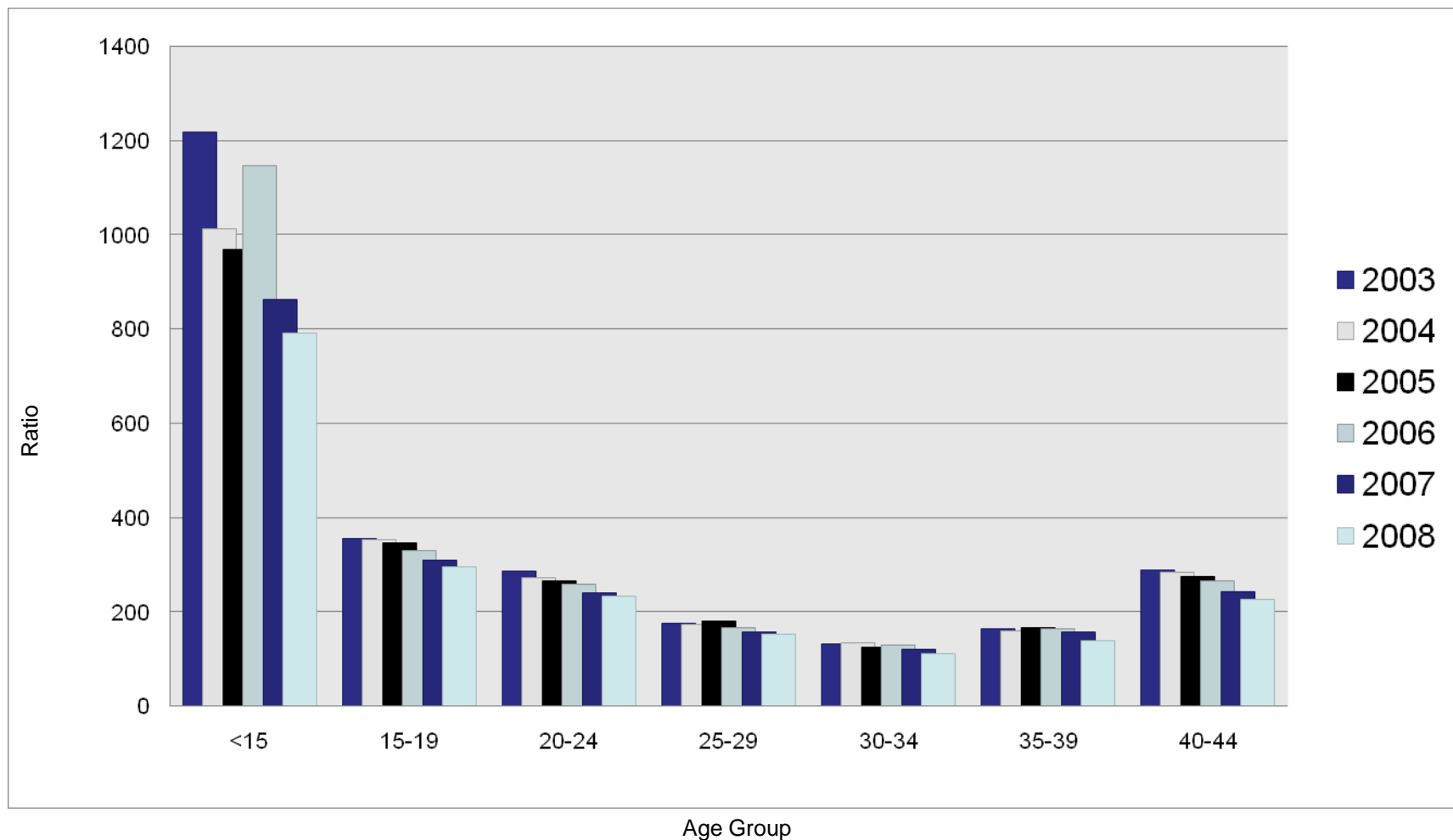
Abortion ratio is number of abortions per 1,000 live births.
 Abortion rate is number of abortions per 1,000 women ages 15-44.

Figure 5. Induced abortion rates per 1,000 women by age, Ohio residents, 2003 - 2008



Abortion rate is number of abortions per 1,000 female population in specified age group.

Figure 6. Induced abortion ratio, by age group, Ohio residents, 2003 - 2008



Abortion ratio is number of abortions per 1,000 live births in specified age group

Figure 7. Total Induced abortions by weeks of gestation, by year, 1990-2008

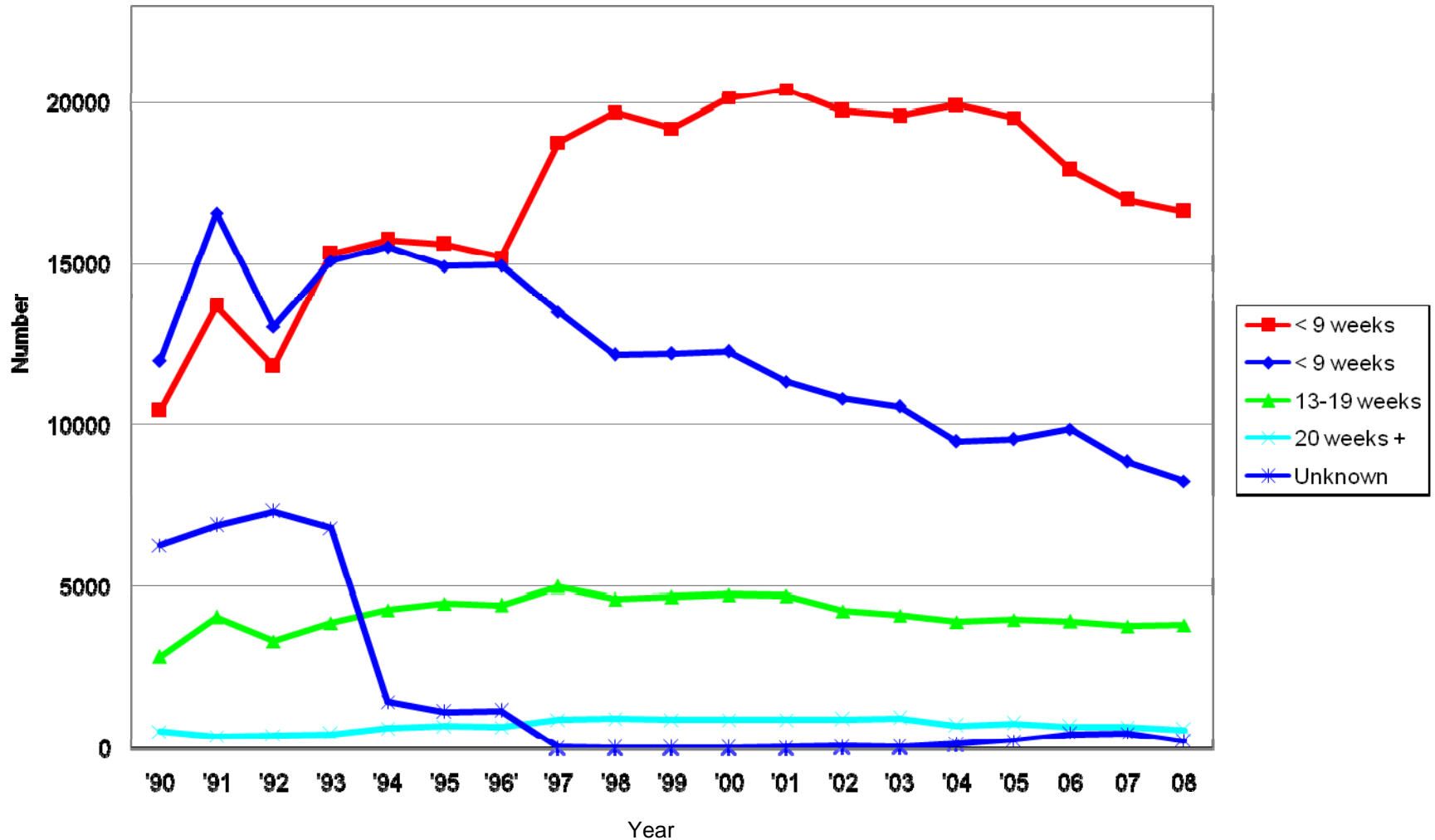


TABLE 1

INDUCED ABORTION SUMMARY TABLE, OHIO, 2008

CHARACTERISTICS	NUMBER	PERCENT
TOTAL INDUCED ABORTIONS	29613	100.0
RESIDENCE:		
Ohio Resident	27672	93.4
Out-of-State Resident	1941	6.6
AGE:		
Under 20 Years	5332	18.0
20-24 Years	9945	33.6
25 Years and Over	14048	47.4
Age Not Reported	288	1.0
RACE GROUP:		
White	16019	54.1
Black	11064	37.4
American Indian	64	0.2
Asian/Pacific Islander	600	2.0
Other/Unknown	1866	6.3
HISPANIC:		
Non-Hispanic	28118	95.0
Hispanic	1070	3.6
Unknown	425	1.4
LEVEL OF EDUCATION:		
Less than Grade 9	479	1.6
Grade 9-12	18389	62.1
1-2 Yrs College	5231	17.7
3-4 Yrs College	4030	13.6
5+ Yrs College	844	2.9
Unknown	640	2.2
MARITAL STATUS:		
Married <u>1</u> /	3921	13.2
Unmarried <u>2</u> /	24408	82.4
Not Reported	1284	4.3
NUMBER OF LIVING CHILDREN:		
None		
One	10211	34.5
Two or More	19293	65.2
Not Reported	109	0.4
WEEKS OF GESTATION:		
Less than 9 Weeks	16663	56.3
9-12 Weeks	8257	27.9
13 Weeks and Over	4448	15.0
Not Reported	245	0.8

1/ Includes Separated

2/ Includes Never Married, Divorced, Widowed

TABLE 2

SELECTED CHARACTERISTICS OF INDUCED ABORTIONS REPORTED IN OHIO, 1997-2008

Characteristic	2008	2007	2006	2005	2004	2003	2002	2001	2000	1999	1998	1997
<u>NUMBER OF ABORTIONS</u>												
TOTAL INDUCED ABORTIONS	29613	30859	32936	34128	34242	35319	35830	37464	38140	37041	37479	38242
RESIDENCE:												
Ohio Resident	27672	28921	30809	31210	31391	32180	32687	34174	35022	34134	34829	35650
Out-of-State Resident	1941	1938	2127	2918	2851	3139	3143	3290	3118	2907	2606	2509
Unknown	0	0	0	0	0	0	0	0	0	0	44	83
AGE:												
Under 15 Years	188	207	292	240	253	292	277	286	314	279	334	354
15-19 Years	5144	5376	5603	5817	5911	6014	6098	6485	6860	6997	7395	7795
20-24 Years	9945	10182	11123	11502	11772	12441	12370	12710	13029	12391	12447	12682
25-29 Years	7192	7355	7720	7968	7655	7836	7984	8531	8885	8774	8973	8951
30-34 Years	3835	4081	4333	4687	4875	4980	5205	5299	5073	4797	4528	4689
35-39 Years	2245	2535	2741	2708	2589	2660	2775	2956	2957	2857	2859	2859
40-44 Years	723	755	845	874	910	938	906	1064	948	883	876	833
45 Years & Older	53	53	53	73	68	55	61	114	53	37	42	35
Unknown	288	315	226	259	209	103	154	19	21	26	25	44
EDUCATION:												
Less than Grade 9	479	579	662	653	675	756	755	797	612	493	632	644
Grade 9-12	18389	18880	20515	20911	21222	22359	22742	23834	24281	23287	23911	24547
1 Or More College Years	10105	10719	11064	11810	11763	11924	11893	12593	12823	11919	11860	12495
None/Not Reported	640	681	695	754	582	280	440	240	424	1342	1076	556
RACE:												
White	16019	17221	18724	19673	19952	20717	20934	22045	22581	22143	22366	22894
Black	11064	11073	11683	12070	12028	12463	12689	13160	13480	12680	12155	12377
Asian/Pacific Islander	600	693	695	723	731	731	740	775	782	720	661	718
Other/Unknown/Not Reported	1930	1872	1834	1662	1531	1418	1467	1484	1297	1498	2297	2253
MARITAL STATUS:												
Never Married	22630	23157	24571	25595	25489	26263	26140	27276	27460	25944	25997	26720
Married	3172	3621	3936	4199	4366	4737	4720	5058	5245	4928	4904	5082
Separated	749	881	990	1080	1146	1148	1215	1381	1374	1334	1317	1331
Divorced	1712	1826	2174	2296	2462	2663	2892	3104	3300	3350	3502	3624
Widowed	66	88	72	72	88	89	100	110	126	101	114	116
Unknown	1284	1286	1193	886	691	419	763	535	635	1384	1645	1369
NUMBER OF LIVING CHILDREN:												
No Children	10211	10974	11488	9415	9007	9913	10154	10866	11103	11480	11861	13884
One Child	8210	8499	9040	9505	9535	9805	9970	10719	11006	10650	10726	10774
Two or more Children	10093	10233	10899	11263	11515	11800	12179	12638	12679	12030	11546	11417
Unknown	1099	1153	1519	3945	4185	3801	3527	3241	3352	2881	3346	2167
WEEKS OF GESTATION:												
Less than 9 Weeks	16663	17023	17955	19549	19933	19610	19755	20432	20161	19212	19708	18784
9 - 12 Weeks	8257	8855	9862	9547	9489	10570	10820	11350	12293	12221	12183	13516
13 - 19 Weeks	3845	3811	3963	4006	3944	4133	4271	4738	4772	4695	4631	5004
20 Weeks and Over	603	690	694	793	731	961	929	921	906	912	944	915
Unknown	245	480	462	253	145	45	55	23	8	1	13	23

Table 2. Induced Abortions, 1997-2008 (page 2)

Characteristic	2008	2007	2006	2005	2004	2003	2002	2001	2000	1999	1998	1997
<u>PERCENTAGE DISTRIBUTION</u>												
TOTAL INDUCED ABORTIONS	100.0	100.0	100.0	100.0	100.0	100.0	100.0	100.0	100.0	100.0	100.0	100.0
RESIDENCE:												
Ohio Resident	93.4	93.7	93.5	91.4	91.7	91.1	91.2	91.2	91.8	92.2	92.9	93.2
Out-of-State Resident	6.6	6.3	6.5	8.6	8.3	8.9	8.8	8.8	8.2	7.8	7.0	6.6
Unknown	0.0	0.0	0.0	0.0	0.0	0.0	0.0	0.0	0.0	0.0	0.1	0.2
AGE:												
Under 15 Years	0.6	0.7	0.9	0.7	0.7	0.8	0.8	0.8	0.8	0.8	0.9	0.9
15-19 Years	17.4	17.4	17.0	17.0	17.3	17.0	17.0	17.3	18.0	18.9	19.7	20.4
20-24 Years	33.6	33.0	33.8	33.7	34.4	35.2	34.5	33.9	34.2	33.5	33.2	33.2
25-29 Years	24.3	23.8	23.4	23.3	22.4	22.2	22.3	22.8	23.3	23.7	23.9	23.4
30-34 Years	13.0	13.2	13.2	13.7	14.2	14.1	14.5	14.1	13.3	13.0	12.1	12.3
35-39 Years	7.6	8.2	8.3	7.9	7.6	7.5	7.7	7.9	7.8	7.7	7.6	7.5
40-44 Years	2.4	2.4	2.6	2.6	2.7	2.7	2.5	2.8	2.5	2.4	2.3	2.2
45 Years & Older	0.2	0.2	0.2	0.2	0.2	0.2	0.2	0.3	0.1	0.1	0.1	0.1
Unknown	1.0	1.0	0.7	0.8	0.6	0.3	0.4	0.1	0.1	0.1	0.1	0.1
EDUCATION:												
Less than Grade 9	1.6	1.9	2.0	1.9	2.0	2.1	2.1	2.1	1.6	1.3	1.7	1.7
Grade 9-12	62.1	61.2	62.3	61.3	62.0	63.3	63.5	63.6	63.7	62.9	63.8	64.2
1 Or More College Years	34.1	34.7	33.6	34.6	34.4	33.8	33.2	33.6	33.6	32.2	31.6	32.7
None/Not Reported	2.2	2.2	2.1	2.2	1.7	0.8	1.2	0.6	1.1	3.6	2.9	1.5
RACE:												
White	54.1	55.8	56.8	57.6	58.3	58.7	58.4	58.8	59.2	59.8	59.7	59.9
Black	37.4	35.9	35.5	35.4	35.1	35.3	35.4	35.1	35.3	34.2	32.4	32.4
Asian/Pacific Islander	2.0	2.2	2.1	2.1	2.1	2.1	2.1	2.1	2.1	1.9	1.8	1.9
Other/Unknown/Not Reported	6.5	6.1	5.6	4.9	4.5	4.0	4.1	4.0	3.4	4.0	6.1	5.9
MARITAL STATUS:												
Never Married	76.4	75.0	74.6	75.0	74.4	74.4	73.0	72.8	72.0	70.0	69.4	69.9
Married	10.7	11.7	12.0	12.3	12.8	13.4	13.2	13.5	13.8	13.3	13.1	13.3
Separated	2.5	2.9	3.0	3.2	3.3	3.3	3.4	3.7	3.6	3.6	3.5	3.5
Divorced	5.8	5.9	6.6	6.7	7.2	7.5	8.1	8.3	8.7	9.0	9.3	9.5
Widowed	0.2	0.3	0.2	0.2	0.3	0.3	0.3	0.3	0.3	0.3	0.3	0.3
Unknown	4.3	4.2	3.6	2.6	2.0	1.2	2.1	1.4	1.7	3.7	4.4	3.6
NUMBER OF LIVING CHILDREN:												
No Children	34.5	35.6	34.9	27.6	26.3	28.1	28.3	29.0	29.1	31.0	31.6	36.3
One Child	27.7	27.5	27.4	27.9	27.8	27.8	27.8	28.6	28.9	28.8	28.6	28.2
Two or more Children	34.1	33.2	33.1	33.0	33.6	33.4	34.0	33.7	33.2	32.5	30.8	29.9
Unknown	3.7	3.7	4.6	11.6	12.2	10.8	9.8	8.7	8.8	7.8	8.9	5.7
WEEKS OF GESTATION:												
Less than 9 Weeks	56.3	55.2	54.5	57.3	58.2	55.5	55.1	54.5	52.9	51.9	52.6	49.1
9 - 12 Weeks	27.9	28.7	29.9	28.0	27.7	29.9	30.2	30.3	32.2	33.0	32.5	35.3
13 - 19 Weeks	13.0	12.3	12.0	11.7	11.5	11.7	11.9	12.6	12.5	12.7	12.4	13.1
20 Weeks and Over	2.0	2.2	2.1	2.3	2.1	2.7	2.6	2.5	2.4	2.5	2.5	2.4
Unknown	0.8	1.6	1.4	0.7	0.4	0.1	0.2	0.1	0.0	0.0	0.0	0.1

TABLE 3

RESIDENT INDUCED ABORTIONS REPORTED IN OHIO, BY COUNTY OF RESIDENCE, 1996-2008

Residence	2008	2007	2006	2005	2004	2003	2002	2001	2000	1999	1998	1997	1996
OHIO	27672	28921	30809	31210	31391	32180	32687	34174	35022	34134	34829	35650	33813
Adams	16	14	28	22	15	18	15	16	22	24	28	36	36
Allen	129	121	153	206	190	159	166	153	165	176	184	207	202
Ashland	45	52	48	61	57	64	47	67	69	74	70	57	55
Ashtabula	149	185	208	187	216	214	228	228	222	195	233	264	384
Athens	101	112	100	111	123	121	119	113	131	163	149	196	135
Auglaize	36	32	42	34	37	47	39	47	54	51	52	61	51
Belmont	12	27	28	40	29	30	24	25	41	26	38	39	22
Brown	42	48	41	55	44	46	67	63	71	75	71	71	55
Butler	754	720	775	816	843	771	773	796	769	854	859	901	951
Carroll	32	35	25	23	34	32	35	38	40	36	35	33	36
Champaign	49	48	57	55	63	52	45	58	74	61	72	70	71
Clark	245	219	263	282	279	331	300	342	357	319	346	349	395
Clermont	321	289	293	317	326	326	344	385	395	429	405	408	263
Clinton	62	48	46	49	45	60	74	76	74	75	62	65	80
Columbiana	125	157	135	188	179	162	220	202	189	178	172	179	188
Coshocton	20	35	28	37	32	43	35	26	34	36	42	31	19
Crawford	41	33	42	48	55	45	58	58	74	70	78	66	56
Cuyahoga	7056	6986	7252	7412	7565	7889	8466	8644	8906	8790	8717	8732	8098
Darke	36	44	48	32	47	47	61	45	44	54	51	67	83
Defiance	28	26	48	23	37	37	37	35	43	32	69	45	68
Delaware	135	174	188	207	171	169	142	130	178	117	149	149	139
Erie	139	160	147	209	170	183	209	227	220	216	201	213	233
Fairfield	155	205	184	208	204	184	185	179	184	193	186	194	115
Fayette	29	32	33	48	41	43	27	49	44	36	45	46	56
Franklin	3526	4381	4683	4601	4678	4684	4290	4645	4764	4056	4143	4276	3395
Fulton	41	39	42	49	41	36	43	52	48	75	62	56	78
Gallia	5	17	18	9	17	12	15	15	19	19	18	24	11
Geauga	106	113	131	128	139	121	152	135	161	148	144	137	126
Greene	274	306	320	282	314	311	322	306	379	321	411	390	379
Guernsey	42	58	46	27	49	46	61	44	59	66	56	77	47
Hamilton	3125	2990	3112	2999	3172	3046	3374	3559	3578	3593	3701	3814	3925
Hancock	105	86	125	129	120	115	121	109	118	126	134	133	125
Hardin	23	29	28	32	47	35	28	36	29	40	51	36	50
Harrison	7	14	6	9	6	9	13	10	15	12	18	20	10
Henry	27	24	42	31	34	28	29	23	32	42	30	28	52
Highland	38	51	44	41	50	53	49	44	46	60	67	68	66
Hocking	28	33	33	44	26	26	29	25	34	30	27	44	17
Holmes	9	19	15	22	18	19	21	22	20	12	23	13	30
Huron	60	79	94	77	79	77	101	123	118	102	115	135	114
Jackson	13	30	27	35	28	34	26	35	27	32	30	35	20
Jefferson	13	15	26	38	17	25	23	30	23	24	22	21	21
Knox	45	72	77	55	66	64	67	65	65	54	70	64	48
Lake	516	525	544	596	571	592	598	654	563	624	594	616	520
Lawrence	15	8	16	20	15	32	21	18	10	18	27	20	18

TABLE 4

RESIDENT INDUCED ABORTIONS REPORTED IN OHIO, BY COUNTY AND AGE, 2008

Residence	Total	Age Group												Unk.
		<15	15	16	17	18	19	20-24	25-29	30-34	35-39	40-44	45+	
OHIO TOTAL	27672	178	334	534	799	1421	1722	9324	6711	3580	2094	656	48	271
Adams	16	0	0	1	0	1	0	3	5	3	2	0	0	1
Allen	129	1	1	1	5	4	10	47	25	19	13	2	0	1
Ashland	45	0	0	1	1	3	4	18	8	8	0	1	0	1
Ashtabula	149	1	0	1	4	4	6	63	31	25	10	4	0	0
Athens	101	0	0	0	0	5	15	48	21	6	3	2	0	1
Auglaize	36	0	1	1	3	4	2	8	6	4	3	2	1	1
Belmont	12	0	0	1	0	3	1	3	3	1	0	0	0	0
Brown	42	0	1	0	3	0	3	16	9	7	2	1	0	0
Butler	754	2	5	11	21	37	51	244	191	108	57	18	2	7
Carroll	32	0	1	0	0	2	4	13	7	4	1	0	0	0
Champaign	49	0	0	1	2	2	6	17	13	5	2	1	0	0
Clark	245	2	4	6	7	13	16	83	52	32	19	10	0	1
Clermont	321	4	2	3	8	23	21	94	76	44	37	9	0	0
Clinton	62	0	2	0	3	2	5	21	20	5	3	0	0	1
Columbiana	125	1	2	3	8	9	10	42	21	8	9	7	0	5
Coshocton	20	0	0	1	3	2	1	6	3	1	3	0	0	0
Crawford	41	0	1	0	1	3	3	16	11	5	0	1	0	0
Cuyahoga	7056	56	80	164	237	338	413	2238	1786	931	575	158	3	77
Darke	36	0	3	1	2	0	4	7	12	4	2	1	0	0
Defiance	28	0	0	0	0	1	3	13	6	5	0	0	0	0
Delaware	135	0	0	1	5	8	13	49	25	10	15	8	0	1
Erie	139	0	1	2	5	5	6	54	33	21	6	4	0	2
Fairfield	155	3	0	1	7	10	9	57	30	22	7	7	1	1
Fayette	29	1	0	1	0	1	1	9	13	2	1	0	0	0
Franklin	3526	17	32	62	73	174	222	1242	899	451	250	67	4	33
Fulton	41	0	1	1	1	3	2	16	9	5	3	0	0	0
Gallia	5	0	0	0	0	0	0	2	3	0	0	0	0	0
Geauga	106	0	2	2	2	2	6	36	25	12	15	2	1	1
Greene	274	0	3	3	4	18	20	119	52	22	23	6	1	3
Guernsey	42	0	1	0	2	5	6	16	6	1	3	2	0	0
Hamilton	3125	21	38	54	66	146	153	1053	834	430	230	69	9	22
Hancock	105	0	0	1	3	6	7	44	22	11	7	4	0	0
Hardin	23	0	0	0	1	1	1	10	4	1	3	1	1	0
Harrison	7	0	0	0	1	0	0	3	1	2	0	0	0	0
Henry	27	1	1	0	1	1	2	9	7	3	2	0	0	0
Highland	38	0	0	1	1	3	3	9	13	4	3	1	0	0
Hocking	28	0	0	0	0	3	3	11	4	3	2	2	0	0
Holmes	9	0	0	0	1	0	0	2	4	0	1	1	0	0
Huron	60	1	0	3	2	4	7	16	12	7	5	2	1	0
Jackson	13	0	0	0	0	0	2	2	4	2	3	0	0	0
Jefferson	13	0	0	0	1	3	1	3	2	2	1	0	0	0
Knox	45	0	1	2	1	5	0	12	8	11	5	0	0	0
Lake	516	1	6	9	18	27	38	158	112	79	44	15	3	6
Lawrence	15	0	0	1	0	0	1	4	6	0	1	1	1	0

Table 4 Resident Induced Abortions, 2008 (Page 2)

Residence	Total	Age Group												
		<15	15	16	17	18	19	20-24	25-29	30-34	35-39	40-44	45+	Unk.
Licking	186	1	3	5	3	9	15	59	42	28	13	7	0	1
Logan	45	2	0	1	0	1	2	21	10	3	3	2	0	0
Lorain	699	4	9	10	23	41	40	223	155	108	56	15	4	11
Lucas	1434	9	19	38	49	83	92	490	363	169	92	17	2	11
Madison	34	0	1	3	1	4	0	11	6	7	1	0	0	0
Mahoning	630	6	7	12	20	24	47	221	149	80	42	16	0	6
Marion	71	1	0	1	1	8	3	29	16	8	2	2	0	0
Medina	266	0	3	2	6	16	17	82	61	35	29	11	1	3
Meigs	19	0	0	0	0	1	2	9	4	1	2	0	0	0
Mercer	19	0	0	0	1	3	1	3	7	3	1	0	0	0
Miami	122	0	4	2	2	4	7	36	30	12	17	7	1	0
Monroe	20	0	0	1	0	0	3	6	3	3	4	0	0	0
Montgomery	1439	16	21	37	43	70	78	491	359	181	90	30	5	18
Morgan	5	0	0	1	0	0	0	1	2	0	1	0	0	0
Morrow	29	0	1	0	1	2	1	10	6	4	0	3	0	1
Muskingum	75	0	1	0	3	4	7	28	14	7	5	4	1	1
Noble	2	0	0	0	0	0	0	1	0	1	0	0	0	0
Ottawa	39	0	0	1	1	0	5	9	10	7	3	2	0	1
Paulding	7	0	0	0	0	0	2	3	2	0	0	0	0	0
Perry	22	0	0	0	1	1	0	12	3	3	0	1	0	1
Pickaway	52	0	1	0	0	5	2	18	15	3	3	3	0	2
Pike	15	0	0	0	0	1	1	5	3	3	2	0	0	0
Portage	379	2	7	8	12	32	37	140	67	36	27	8	0	3
Preble	53	0	0	1	4	4	2	16	9	12	3	2	0	0
Putnam	19	0	0	0	4	1	3	6	2	1	1	1	0	0
Richland	194	0	3	6	6	11	10	71	43	24	10	7	0	3
Ross	86	0	3	2	3	4	9	25	18	13	8	1	0	0
Sandusky	106	0	5	1	2	5	9	31	29	11	8	4	0	1
Scioto	57	0	1	1	1	2	6	25	7	5	6	1	0	2
Seneca	56	0	0	1	3	2	5	26	12	1	4	2	0	0
Shelby	27	1	3	1	3	0	2	9	6	0	2	0	0	0
Stark	752	4	13	12	26	28	51	288	158	97	39	23	3	10
Summit	1601	9	23	28	39	86	109	531	384	217	127	33	1	14
Trumbull	445	6	8	6	9	29	23	154	101	50	43	14	0	2
Tuscarawas	132	0	1	1	5	12	6	37	30	19	10	6	1	4
Union	52	0	0	0	1	3	4	15	16	9	3	1	0	0
Van Wert	7	0	0	0	0	0	1	2	2	2	0	0	0	0
Vinton	8	0	1	0	0	0	0	2	3	2	0	0	0	0
Warren	270	0	1	6	11	9	14	81	49	51	33	13	0	2
Washington	22	0	0	0	0	3	1	12	4	1	1	0	0	0
Wayne	142	4	4	2	6	12	9	44	31	15	8	6	1	3
Williams	33	0	0	0	1	2	1	15	6	4	1	2	0	0
Wood	204	2	2	3	5	17	12	80	36	16	23	3	0	6
Wyandot	22	0	0	1	0	1	2	10	4	2	0	0	0	0

TABLE 5a

RESIDENT INDUCED ABORTIONS REPORTED IN OHIO, BY SELECTED
COUNTIES, RACE AND BROAD AGE GROUPS, 2008

County/Race	Total	Age Group					Unk
		10-19	20-29	30-39	40-49	50 +	
OHIO	27672	4988	16035	5674	697	7	271
White	14495	2506	8316	3042	474	4	153
Black	10793	2088	6434	2026	153	3	89
Oth/Unk	2384	394	1285	606	70	0	29
ALLEN	129	22	72	32	2	0	1
White	81	13	41	25	2	0	0
Black	44	7	31	6	0	0	0
Oth/Unk	4	2	0	1	0	0	1
ASHTABULA	149	16	94	35	4	0	0
White	131	14	81	33	3	0	0
Black	5	0	4	0	0	0	0
Oth/Unk	13	2	9	0	1	0	0
ATHENS	101	20	69	9	2	0	1
White	82	14	59	6	2	0	1
Black	11	4	6	1	0	0	0
Oth/Unk	8	2	4	2	0	0	0
BUTLER	754	127	435	165	20	0	7
White	531	102	316	96	11	0	6
Black	133	13	75	39	5	0	1
Oth/Unk	90	12	44	30	4	0	0
CLARK	245	48	135	51	10	0	1
White	175	34	96	35	9	0	1
Black	57	13	30	13	1	0	0
Oth/Unk	13	1	9	3	0	0	0
CLERMONT	321	61	170	81	9	0	0
White	301	58	162	72	9	0	0
Black	10	1	5	4	0	0	0
Oth/Unk	10	2	3	5	0	0	0
COLUMBIANA	125	33	63	17	7	0	5
White	118	30	61	15	7	0	5
Black	3	3	0	0	0	0	0
Oth/Unk	4	0	2	2	0	0	0
CUYAHOGA	7056	1288	4024	1506	160	1	77
White	1915	298	1064	439	85	0	29
Black	4393	851	2574	873	53	1	41
Oth/Unk	748	139	386	194	22	0	7
DELAWARE	135	27	74	25	8	0	1
White	111	22	61	20	7	0	1
Black	15	5	8	1	1	0	0
Oth/Unk	9	0	5	4	0	0	0

Table 5a. Resident Induced Abortions, 2008 (Page 2)

County/Race	Total	Age Group					Unk
		10-19	20-29	30-39	40-49	50+	
ERIE	139	19	87	27	4	0	2
White	95	11	57	23	3	0	1
Black	30	4	23	1	1	0	1
Oth/Unk	14	4	7	3	0	0	0
FAIRFIELD	155	30	87	29	8	0	1
White	26	22	74	23	7	0	0
Black	26	7	11	6	1	0	1
Oth/Unk	3	1	2	0	0	0	0
FRANKLIN	3526	580	2141	701	69	2	33
White	1705	277	1037	339	34	0	18
Black	1505	274	905	288	25	2	11
Oth/Unk	316	29	199	74	10	0	4
GREENE	274	48	171	45	7	0	3
White	182	30	113	33	4	0	2
Black	68	16	43	7	2	0	0
Oth/Unk	24	2	15	5	1	0	1
HAMILTON	3125	478	1887	660	75	3	22
White	1256	157	762	283	42	3	9
Black	1642	290	1018	300	24	0	10
Oth/Unk	227	31	107	77	9	0	3
HANCOCK	105	17	66	18	4	0	0
White	80	14	47	15	4	0	0
Black	9	0	8	1	0	0	0
Oth/Unk	16	3	11	2	0	0	0
JEFFERSON	13	5	5	3	0	0	0
White	10	5	4	1	0	0	0
Black	3	0	1	2	0	0	0
KNOX	45	9	20	16	0	0	0
White	43	9	18	16	0	0	0
Black	0	0	0	0	0	0	0
Oth/Unk	2	0	2	0	0	0	0
LAKE	516	99	270	123	18	0	6
White	396	75	210	89	17	0	5
Black	68	13	36	18	0	0	1
Oth/Unk	52	11	24	16	1	0	0
LICKING	186	36	101	41	7	0	1
White	164	33	91	37	6	0	0
Black	15	2	6	6	1	0	0
Oth/Unk	7	1	4	1	0	0	1
LORAIN	699	127	378	164	19	0	11
White	460	86	247	105	16	0	6
Black	136	23	77	35	0	0	1
Oth/Unk	103	18	54	24	3	0	4

Table 5a. Resident Induced Abortions, 2008 (Page 3)

County/Race	Total	Age Group					Unk
		10-19	20-29	30-39	40-49	50 +	
LUCAS	1434	290	853	261	19	0	11
White	681	127	383	153	13	0	5
Black	556	119	356	74	3	0	4
Oth/Unk	197	44	114	34	3	0	2
MAHONING	630	116	370	122	16	0	6
White	324	1	192	67	11	0	3
Black	276	54	163	51	5	0	3
Oth/Unk	30	11	15	4	0	0	0
MARION	71	14	45	10	2	0	0
White	61	14	38	8	1	0	0
Black	8	0	6	1	1	0	0
Oth/Unk	2	0	1	1	0	0	0
MEDINA	266	44	143	64	12	0	3
White	236	38	130	55	11	0	2
Black	10	2	5	2	0	0	1
Oth/Unk	20	4	8	7	1	0	0
MIAMI	122	19	66	29	8	0	0
White	110	18	58	26	8	0	0
Black	7	0	6	1	0	0	0
Oth/Unk	5	1	2	2	0	0	0
MONTGOMERY	1439	265	850	271	34	1	18
White	673	108	387	146	21	1	10
Black	679	146	410	103	12	0	8
Oth/Unk	87	11	53	22	1	0	0
PORTAGE	379	98	207	63	8	0	3
White	291	72	163	46	8	0	2
Black	65	22	30	13	0	0	0
Oth/Unk	23	4	14	4	0	0	1
RICHLAND	194	36	114	34	7	0	3
White	147	28	82	29	6	0	2
Black	39	7	26	4	1	0	1
Oth/Unk	8	1	6	1	0	0	0
SANDUSKY	106	22	60	19	4	0	1
White	84	17	48	15	4	0	0
Black	4	0	4	0	0	0	0
Oth/Unk	18	5	8	4	0	0	1
SCIOTO	57	11	32	11	1	0	2
White	53	10	29	11	1	0	2
Black	2	0	2	0	0	0	0
Oth/Unk	2	1	1	0	0	0	0

Table 5a. Resident Induced Abortions, 2008 (Page 4)

County/Race	Total	Age Group					Unk
		10-19	20-29	30-39	40-49	50 +	
SENECA	56	11	38	5	2	0	0
White	45	8	30	5	2	0	0
Black	2	1	1	0	0	0	0
Oth/Unk	9	2	7	0	0	0	0
STARK	752	134	446	136	26	0	10
White	550	88	330	105	19	0	8
Black	115	40	90	19	6	0	0
Oth/Unk	47	6	26	12	1	0	2
SUMMIT	1601	294	915	344	34	0	14
White	870	155	490	194	22	0	9
Black	624	123	370	122	5	0	4
Oth/Unk	107	16	55	28	7	0	1
TRUMBULL	445	81	255	93	14	0	2
White	326	56	188	67	13	0	2
Black	103	20	61	21	1	0	0
Oth/Unk	16	5	6	5	0	0	0
WARREN	270	41	130	84	13	0	2
White	227	39	116	60	10	0	2
Black	12	1	5	5	1	0	0
Oth/Unk	31	1	9	19	2	0	0
WAYNE	142	34	75	23	7	0	3
White	132	34	66	23	6	0	3
Black	6	0	6	0	0	0	0
Oth/Unk	4	0	3	0	1	0	0
WOOD	204	40	116	39	3	0	6
White	158	26	90	35	2	0	5
Black	17	7	9	0	0	0	1
Oth/Unk	29	7	17	4	1	0	0

TABLE 5b

RESIDENT INDUCED ABORTIONS REPORTED IN OHIO, BY SELECTED COUNTIES, RACE AND AGE, 2008

County/Race	Total	Age Group															Unk.
		<15	15	16	17	18	19	15-19	20	21	20-24	25-29	30-34	35-39	40-44	45+	
OHIO	27672	178	334	534	799	1421	1722	4810	1846	1929	9324	6711	3580	2094	656	48	271
White	14495	62	154	257	395	739	899	2444	981	1052	4954	3362	1861	1181	445	33	153
Black	10793	104	152	237	336	582	677	1984	717	741	3644	2790	1335	691	147	9	89
Oth/Unk	2384	12	28	40	68	100	146	382	148	136	726	559	384	222	64	6	29
BUTLER	754	2	5	11	21	37	51	125	47	50	244	191	108	57	18	2	7
White	531	1	5	9	20	29	38	101	37	38	183	133	63	33	9	2	6
Black	133	1	0	1	1	5	5	12	4	6	38	37	28	11	5	0	1
Oth/Unk	90	0	0	1	0	3	8	12	6	6	23	21	17	13	4	0	0
CUYAHOGA	7056	56	80	164	237	338	413	1232	430	445	2238	1786	931	575	158	3	77
White	1915	7	13	40	56	80	102	291	111	111	611	453	262	177	84	1	29
Black	4393	44	59	104	157	224	263	807	276	291	1416	1158	545	328	53	1	41
Oth/Unk	748	5	8	20	24	34	48	134	43	43	211	175	124	70	21	1	7
FRANKLIN	3526	17	32	62	73	174	222	563	233	268	1242	899	451	250	67	4	33
White	1705	6	11	29	39	87	105	271	115	132	624	413	209	130	33	1	18
Black	1505	10	18	32	31	83	100	264	93	117	514	391	191	97	24	3	11
Oth/Unk	316	1	3	1	3	4	17	28	25	19	104	95	51	23	10	0	4
GREENE	274	0	3	3	4	18	20	48	23	23	119	52	22	23	6	1	3
White	182	0	2	2	3	10	13	30	12	16	79	34	16	17	3	1	2
Black	68	0	1	1	1	7	6	16	8	4	27	16	3	4	2	0	0
Oth/Unk	24	0	0	0	0	1	1	2	3	3	13	2	3	2	1	0	1

Table 5b. Resident Induced Abortions, 2008 (Page 2)

County/Race	Total	Age Group															Unk.
		<15	15	16	17	18	19	15-19	20	21	20-24	25-29	30-34	35-39	40-44	45 +	
HAMILTON	3125	21	38	54	66	146	153	457	196	223	1053	834	430	230	69	9	22
White	1256	4	10	20	23	50	50	153	73	103	431	331	171	112	39	6	9
Black	1642	17	24	31	40	85	93	273	113	108	566	452	208	92	23	1	10
Oth/Unk	227	0	4	3	3	11	10	31	10	12	56	51	51	26	7	2	3
LORAIN	699	4	9	10	23	41	40	123	40	51	223	155	108	56	15	4	11
White	460	2	6	6	15	28	29	84	28	30	139	108	65	40	13	3	6
Black	136	2	1	4	3	8	5	21	6	10	48	29	22	13	0	0	1
Oth/Unk	103	0	2	0	5	5	6	18	6	11	36	18	21	3	2	1	4
LUCAS	1434	9	19	38	49	83	92	281	105	92	490	363	169	92	17	2	11
White	681	3	7	17	22	37	41	124	58	45	226	157	94	59	12	1	5
Black	556	5	10	14	21	31	38	114	34	37	199	157	51	23	2	1	4
Oth/Unk	197	1	2	7	6	15	13	43	13	10	65	49	24	10	3	0	2
MONTGOMERY	1439	16	21	37	43	70	78	249	101	97	491	359	181	90	30	5	18
White	673	6	6	15	15	29	37	102	41	46	222	165	98	48	19	3	10
Black	679	10	14	19	26	40	37	136	56	48	243	167	71	32	10	2	8
Oth/Unk	87	0	1	3	2	1	4	11	4	3	26	27	12	10	1	0	0
SUMMIT	1601	9	23	28	39	86	109	285	101	110	531	384	217	127	33	1	14
White	870	3	9	14	24	43	62	152	45	70	300	190	119	75	21	1	9
Black	624	4	13	12	14	41	39	119	51	34	206	164	87	35	5	0	4
Oth/Unk	107	2	1	2	1	2	8	14	5	6	25	30	11	17	7	0	1

TABLE 7

INDUCED ABORTIONS REPORTED IN OHIO, BY METHOD OF TERMINATION AND COUNTY OF OCCURRENCE, 2008

County of Occurrence	Method of Termination										
	TOTAL	Curette	D & Ext	D & Evac	Saline Instill	Prostag Instill	Hyster- otomy	Hyster- ectomy	Other	Non Surgical	Not Reported
OHIO	29613	20897	417	2842	79	69	3	4	897	5231	567
CUYAHOGA	9850	6613	17	1387	29	18	2	4	884	1855	328
ERIE	1	0	0	0	0	0	0	1	1	0	0
FRANKLIN	5196	3605	1	191	14	8	0	0	4	1405	38
GREENE	140	1	0	0	1	0	0	0	0	139	0
HAMILTON	5621	4986	52	502	12	22	0	0	3	209	23
LUCAS	2338	1637	34	192	8	4	0	0	0	374	98
MAHONING	690	643	0	0	0	2	0	0	0	47	0
MONTGOMERY	2411	1822	8	422	4	5	0	0	5	148	12
STARK	1	0	0	1	0	0	0	0	0	0	0
SUMMIT	3109	1590	305	121	11	10	1	0	0	1054	68

Does not add due to reporting of combination procedures.

TABLE 8

TOTAL INDUCED ABORTIONS REPORTED IN OHIO, BY
GESTATIONAL AGE, 2008

Gestational Age	Number	Percent
Total Abortions Reported	29613	100.0
Less than 9 Weeks	16663	56.3
9 - 12 Weeks	8257	27.9
13 - 19 Weeks	3845	13.0
20 Weeks	123	0.4
21 - 24	452	1.5
25 - 36 Weeks	28	0.1
Unknown	245	0.8

TABLE 9

RESIDENT INDUCED ABORTIONS IN OHIO, BY AGE OF WOMEN OBTAINING ABORTION
AND BY NUMBER OF PRIOR INDUCED ABORTIONS, 2008

Age Group	Total	Prior Induced Abortion						Unk
		0	1	2	3	4	5+	
Total Abortions	27672	13377	7175	3095	1185	444	401	1995
Under 15	178	146	5	2	2	0	0	23
15-19	4810	3501	649	110	22	3	7	518
20-24	9324	4903	2479	828	274	76	57	707
25-29	6711	2525	2040	1080	404	164	119	379
30-34	3580	1180	1095	602	301	108	119	175
35-39	2094	715	638	353	133	67	67	121
40-44	656	260	191	80	35	21	25	44
45-59	48	21	13	6	1	1	2	4
Unknown	271	126	65	34	13	4	5	24

TABLE 10

TOTAL INDUCED ABORTIONS IN OHIO WITH POST-ABORTION COMPLICATIONS, BY
TYPE OF COMPLICATION, 2008

(DATA SOURCE IS 'POST-ABORTION CARE REPORT FOR COMPLICATIONS')

Complication Type	Number of Complications	Percent of Abortions with Complications
Perforation of Uterus	6	14.29%
Cervical Laceration	4	9.52%
Hemorrhage	11	26.19%
Incomplete Abortion	18	42.86%
Hematometra	8	19.05%
Anesthetic	0	0.00%
Failed Abortion	3	7.14%
Infection	5	11.90%
Death	0	0.00%
Other	13	30.95%
Total Number of Complications*	68	Not Applicable
Total Abortions with One or More Complications	42	100.0%

TABLE 11

TOTAL INDUCED ABORTIONS IN OHIO WITH POST-ABORTION COMPLICATIONS, BY
TYPE OF COMPLICATION AND GESTATION PERIOD, 2008

(DATA SOURCE IS POST-ABORTION CARE REPORT FOR COMPLICATIONS')

Complication Type	Total	Gestation Period				Unk
		< 9 Wks	9-12 Wks	13-19 Wks	20+ Wks	
(Number of Complications)						
Perforation of Uterus	6	0	2	0	4	0
Cervical Laceration	4	0	1	0	3	0
Hemorrhage	11	2	3	1	3	2
Incomplete Abortion	18	6	7	2	2	1
Hematometra	8	3	4	1	0	0
Anesthetic	0	0	0	0	0	0
Failed Abortion	3	3	0	0	0	0
Infection	5	1	2	0	2	0
Death	0	0	0	0	0	0
Other/Unreported	13	2	2	0	8	1
Total Number of Complications*	68	17	21	4	22	4
Total Abortions with One or More Complications	42	15	13	4	8	2

NOTE: An abortion may have more than one reported complication. Complications reported in this table may or may not also be reported in Table 10b.

TABLE 12

RESIDENT INDUCED ABORTIONS BY ZIP CODE OF PATIENT, OHIO, 2008

Zip Code	Total	Zip Code	Total	Zip Code	Total	Zip Code	Total
43001	2	43072	2	43157	1	43244	1
43004	66	43073	1	43160	20	43250	1
43006	1	43074	5	43162	5	43268	2
43007	1	43076	5	43164	5	43279	1
43008	4	43078	28	43168	1	43301	1
43009	4	43080	7	43169	1	43302	61
43010	1	43081	105	43186	1	43310	1
43011	6	43082	17	43197	1	43311	29
43013	1	43085	38	43201	158	43314	2
43014	3	43087	1	43202	60	43315	6
43015	52	43102	4	43203	53	43316	1
43016	48	43103	12	43204	129	43318	4
43017	52	43105	4	43205	64	43319	1
43018	1	43107	3	43206	106	43320	2
43019	6	43109	3	43207	111	43321	1
43020	1	43110	101	43208	3	43324	1
43021	7	43112	3	43209	68	43325	1
43022	1	43113	24	43210	25	43326	11
43023	8	43115	1	43211	97	43328	1
43025	3	43116	1	43212	48	43331	1
43026	77	43119	59	43213	156	43334	7
43028	4	43123	115	43214	38	43338	7
43031	9	43125	20	43215	43	43340	1
43032	1	43126	1	43216	1	43342	1
43035	34	43127	1	43217	14	43343	1
43036	1	43128	4	43219	130	43344	3
43040	41	43129	1	43220	48	43347	1
43044	7	43130	62	43221	53	43348	3
43045	1	43135	6	43222	6	43351	19
43046	7	43137	3	43223	62	43357	2
43050	33	43138	19	43224	120	43358	1
43051	1	43139	1	43225	2	43360	1
43052	1	43140	22	43226	3	43368	1
43054	25	43142	1	43227	98	43402	62
43055	76	43143	8	43228	174	43403	12
43056	24	43144	1	43229	207	43406	2
43060	3	43146	7	43230	91	43410	14
43061	2	43147	57	43231	64	43412	4
43062	34	43148	1	43232	237	43413	1
43064	5	43149	3	43233	1	43414	1
43065	26	43150	2	43234	1	43416	5
43066	3	43151	1	43235	91	43417	1
43067	1	43152	1	43237	2	43420	65
43068	181	43153	2	43240	11	43421	1
43069	1	43154	3	43241	1	43425	1
43071	2	43155	3	43242	1	43426	1

Table 13 Resident Induced Abortions by Zip Code of Patient, 2008 (Page 2)

Zip Code	Total	Zip Code	Total	Zip Code	Total	Zip Code	Total
43430	3	43551	53	43720	1	43901	2
43431	5	43552	1	43722	2	43906	1
43432	1	43554	3	43723	3	43907	2
43435	2	43556	2	43724	1	43917	1
43440	3	43557	5	43725	22	43920	22
43442	4	43558	23	43728	2	43930	1
43445	1	43560	46	43730	2	43932	3
43447	3	43564	1	43731	4	43937	1
43449	4	43566	8	43732	1	43946	1
43450	11	43567	8	43734	2	43947	2
43451	1	43569	3	43735	1	43950	1
43452	23	43570	3	43740	1	43952	3
43457	1	43571	9	43746	1	43964	2
43460	9	43601	1	43747	3	43968	6
43462	4	43602	6	43748	1	43973	2
43464	2	43604	67	43749	3	43977	3
43465	9	43605	97	43754	1	43985	1
43466	5	43606	89	43756	3	43988	1
43467	1	43607	130	43758	1	44001	41
43468	1	43608	106	43759	1	44002	1
43469	2	43609	109	43760	1	44003	4
43501	1	43610	24	43762	3	44004	58
43502	6	43611	48	43764	5	44005	1
43505	1	43612	117	43766	2	44007	1
43506	9	43613	83	43768	1	44009	1
43511	1	43614	85	43772	3	44010	2
43512	25	43615	149	43773	2	44011	37
43515	9	43616	31	43777	2	44012	38
43516	6	43617	7	43780	1	44016	1
43517	5	43618	2	43783	3	44017	43
43518	3	43619	7	43793	4	44021	8
43519	1	43620	33	43802	1	44022	19
43521	2	43622	1	43804	2	44023	26
43522	6	43623	35	43811	1	44024	28
43526	1	43624	1	43812	10	44026	9
43527	2	43665	1	43821	4	44028	12
43528	36	43668	3	43822	6	44030	33
43532	6	43701	53	43824	7	44031	1
43533	3	43704	1	43830	4	44032	3
43536	1	43709	1	43832	9	44033	2
43537	44	43713	1	43833	1	44034	2
43543	11	43714	1	43837	2	44035	180
43545	11	43716	2	43840	1	44036	2
43547	3	43717	1	43844	2	44037	1
43548	1	43718	1	43845	2	44038	1
43549	1	43719	1	43872	1	44039	55

Table 12 Resident Induced Abortions by Zip Code of Patient, 2008 (Page 3)

Zip Code	Total	Zip Code	Total	Zip Code	Total	Zip Code	Total
44040	5	44104	377	44155	1	44258	1
44041	22	44105	424	44157	1	44260	23
44042	3	44106	203	44167	1	44262	7
44044	18	44107	271	44170	1	44263	3
44045	3	44108	337	44183	1	44264	1
44046	6	44109	198	44194	2	44265	1
44047	8	44110	250	44195	1	44266	71
44048	5	44111	187	44200	1	44270	12
44050	9	44112	283	44201	9	44272	5
44051	1	44113	111	44202	28	44273	9
44052	111	44114	20	44203	91	44275	4
44053	51	44115	148	44204	2	44276	2
44054	32	44116	36	44205	2	44278	29
44055	79	44117	61	44206	5	44280	5
44056	28	44118	234	44207	1	44281	26
44057	43	44119	77	44211	1	44286	6
44060	105	44120	403	44212	79	44287	9
44062	10	44121	242	44214	2	44288	17
44064	1	44122	106	44215	3	44301	67
44065	5	44123	108	44216	12	44302	33
44067	41	44124	92	44217	10	44303	23
44068	2	44125	178	44218	1	44304	29
44070	79	44126	56	44220	1	44305	90
44071	1	44127	41	44221	78	44306	131
44072	11	44128	322	44222	2	44307	58
44073	1	44129	92	44223	36	44308	2
44074	15	44130	134	44224	60	44309	4
44076	5	44131	28	44230	9	44310	104
44077	133	44132	110	44231	9	44311	61
44081	13	44133	56	44232	1	44312	78
44082	3	44134	101	44233	10	44313	96
44084	10	44135	128	44234	8	44314	69
44085	3	44136	65	44235	1	44315	1
44086	1	44137	206	44236	27	44316	1
44087	53	44138	40	44239	1	44317	2
44089	28	44139	40	44240	129	44319	40
44090	8	44140	19	44241	56	44320	122
44092	51	44141	11	44242	8	44321	27
44093	4	44142	52	44243	11	44323	1
44094	91	44143	75	44245	1	44329	1
44095	72	44144	59	44250	1	44333	19
44099	3	44145	59	44251	3	44338	1
44100	3	44146	217	44253	4	44341	1
44101	5	44147	43	44254	19	44343	1
44102	280	44149	27	44255	10	44347	1
44103	193	44152	1	44256	102	44370	2

Table 12 Resident Induced Abortions by Zip Code of Patient, 2008 (Page 4)

Zip Code	Total	Zip Code	Total	Zip Code	Total	Zip Code	Total
44381	1	44455	4	44618	6	44702	1
44382	1	44460	35	44620	2	44703	43
44383	1	44468	1	44621	2	44704	17
44390	1	44470	5	44622	26	44705	61
44391	1	44471	20	44623	1	44706	36
44400	1	44473	7	44624	2	44707	29
44401	3	44481	18	44625	3	44708	48
44402	10	44482	1	44626	3	44709	45
44403	8	44483	60	44627	1	44710	32
44404	1	44484	65	44629	1	44714	37
44405	27	44485	67	44632	11	44718	15
44406	33	44490	3	44637	1	44720	45
44407	3	44491	7	44638	3	44721	19
44408	9	44493	1	44641	27	44725	1
44410	31	44501	4	44643	3	44730	5
44411	2	44502	41	44644	6	44804	3
44412	4	44503	2	44645	3	44805	27
44413	14	44504	23	44646	120	44807	3
44415	2	44505	72	44647	28	44810	4
44417	1	44506	11	44651	1	44811	13
44418	1	44507	36	44652	2	44813	9
44420	40	44508	1	44653	1	44814	3
44421	1	44509	67	44654	6	44815	2
44423	4	44510	5	44656	4	44816	1
44425	20	44511	73	44657	9	44817	2
44427	1	44512	83	44659	1	44818	2
44428	3	44513	3	44662	16	44820	19
44429	2	44514	23	44663	47	44822	2
44430	5	44515	67	44666	5	44826	3
44431	7	44517	1	44667	20	44827	7
44432	10	44519	3	44669	3	44830	31
44434	1	44530	1	44671	1	44833	15
44436	6	44547	1	44672	3	44836	2
44437	3	44556	1	44676	6	44837	3
44438	8	44601	53	44677	1	44839	11
44440	8	44602	1	44680	6	44840	5
44441	1	44603	2	44681	1	44842	5
44442	7	44605	1	44682	1	44843	4
44443	4	44606	6	44683	17	44844	1
44444	15	44607	1	44685	37	44846	4
44445	1	44608	3	44688	4	44847	5
44446	60	44609	4	44689	1	44849	3
44449	1	44612	8	44691	55	44851	4
44450	2	44613	5	44695	1	44854	3
44451	5	44614	11	44699	2	44855	1
44452	4	44615	18	44701	4	44856	1

Table 12 Resident Induced Abortions by Zip Code of Patient, 2008 (Page 5)

Zip Code	Total	Zip Code	Total	Zip Code	Total	Zip Code	Total
44857	29	45042	45	45159	2	45234	2
44859	1	45044	105	45160	1	45235	1
44864	3	45045	1	45162	4	45236	69
44865	7	45050	17	45164	1	45237	107
44866	1	45052	2	45165	1	45238	138
44867	2	45053	3	45167	5	45239	123
44870	104	45054	1	45168	2	45240	156
44874	1	45055	1	45169	4	45241	47
44875	17	45056	52	45171	6	45242	39
44878	3	45062	1	45174	1	45243	19
44880	1	45064	1	45176	15	45244	39
44881	1	45065	9	45177	34	45245	40
44882	1	45066	20	45200	1	45246	55
44883	28	45067	26	45201	2	45247	52
44889	10	45068	8	45202	65	45248	54
44890	7	45069	92	45203	19	45249	26
44901	1	45071	2	45204	24	45251	93
44902	10	45102	41	45205	100	45252	6
44903	49	45103	65	45206	64	45253	1
44904	15	45106	15	45207	47	45255	35
44905	15	45107	16	45208	37	45259	1
44906	22	45108	1	45209	35	45266	1
44907	39	45111	2	45210	3	45277	1
44908	1	45112	1	45211	162	45278	1
44909	1	45113	4	45212	70	45287	1
44951	1	45117	1	45213	56	45290	1
45001	2	45118	2	45214	71	45291	1
45002	22	45120	5	45215	97	45302	4
45004	1	45121	15	45216	38	45303	2
45005	47	45122	25	45217	38	45304	4
45006	1	45123	8	45218	18	45305	6
45011	167	45125	1	45219	92	45308	3
45012	1	45127	1	45220	78	45309	16
45013	92	45130	4	45221	1	45311	6
45014	154	45133	18	45222	1	45314	6
45015	25	45135	6	45223	101	45315	4
45016	1	45137	1	45224	97	45316	1
45022	1	45140	66	45225	89	45318	5
45030	29	45142	4	45226	16	45320	22
45032	1	45144	3	45227	74	45321	3
45033	2	45148	2	45228	1	45322	42
45034	1	45150	54	45229	81	45323	14
45036	40	45152	15	45230	56	45324	110
45039	47	45153	1	45231	170	45325	2
45040	80	45154	12	45232	71	45326	1
45041	1	45157	14	45233	15	45327	11

Table 12 Resident Induced Abortions by Zip Code of Patient, 2008 (Page 6)

Zip Code	Total	Zip Code	Total	Zip Code	Total	Zip Code	Total
45329	1	45407	3	45629	1	45764	9
45330	1	45408	64	45631	6	45766	4
45331	19	45409	16	45634	2	45769	4
45334	1	45410	33	45638	8	45771	2
45335	6	45413	1	45640	6	45772	1
45338	4	45414	49	45644	2	45775	1
45339	2	45415	25	45646	1	45777	1
45340	1	45416	35	45647	1	45778	1
45341	4	45417	34	45648	2	45779	4
45342	69	45418	19	45651	4	45780	6
45344	24	45419	29	45652	1	45783	1
45345	16	45420	46	45653	1	45801	31
45346	2	45424	114	45656	3	45802	2
45347	7	45426	87	45660	1	45804	28
45348	1	45427	38	45661	6	45805	25
45349	1	45429	34	45662	34	45806	14
45356	34	45430	7	45663	10	45807	10
45358	1	45431	50	45669	1	45810	11
45359	1	45432	29	45672	1	45812	1
45361	1	45433	3	45679	1	45813	1
45362	1	45434	6	45680	3	45814	1
45363	2	45435	2	45681	2	45815	1
45365	18	45439	36	45682	2	45816	1
45368	7	45440	49	45690	12	45817	2
45369	8	45443	1	45692	4	45821	1
45370	2	45449	57	45693	8	45822	12
45371	20	45450	1	45694	7	45827	3
45372	1	45458	56	45695	2	45830	5
45373	46	45459	51	45697	2	45832	2
45377	19	45469	1	45699	1	45833	9
45380	5	45493	1	45701	67	45840	78
45381	13	45500	1	45706	1	45843	3
45382	2	45502	16	45710	2	45844	1
45383	11	45503	64	45711	4	45845	3
45384	8	45504	32	45712	1	45846	1
45385	48	45505	46	45714	3	45848	1
45387	9	45506	31	45716	1	45849	1
45388	1	45508	1	45719	1	45851	1
45389	1	45520	1	45723	4	45853	1
45390	1	45535	1	45724	1	45854	1
45401	2	45540	1	45725	1	45856	6
45402	35	45601	63	45732	4	45858	4
45403	37	45606	1	45740	1	45859	1
45404	32	45612	8	45750	15	45865	2
45405	100	45613	1	45760	2	45866	1
45406	118	45628	4	45761	1	45869	3

Table 12 Resident Induced Abortions by Zip Code of Patient, 2008 (Page 7)

Zip Code	Total	Zip Code	Total	Zip Code	Total	Zip Code	Total
45870	1	45875	2	45882	1	45890	3
45871	3	45877	2	45883	1	45891	10
45872	8	45879	1	45885	9	45895	17
45873	1	45880	2	45887	1	45896	1
45874	1	45881	1	45889	1	45931	1

Confidential Abortion Report

Ohio Department of Health
(Required pursuant to O.A.C. 3701-47-03)

1. Facility name:	For State Use Only
2. Address: Zip code: <input style="width: 50px;" type="text"/>	

GENERAL INFORMATION

3. Zip code of address of the woman: <input style="width: 100%;" type="text"/>	Ohio County of Residence (specify):	Non-Ohio State of Residence (specify):
4. Woman's identification number: <input style="width: 100%;" type="text"/>	5. Age of woman: <input style="width: 50px;" type="text"/>	6. Education: Specify highest number of years completed <input style="width: 50px;" type="text"/>
7. Marital status: <input type="checkbox"/> Never married <input type="checkbox"/> Divorced <input type="checkbox"/> Married <input type="checkbox"/> Widowed <input type="checkbox"/> Separated <input type="checkbox"/> Unknown	8A. Race or ethnic group: <input type="checkbox"/> White <input type="checkbox"/> Asian/Pacific Islander <input type="checkbox"/> Black <input type="checkbox"/> Other /Unknown (specify) _____ <input type="checkbox"/> American Indian	8B. Is woman Hispanic? <input type="checkbox"/> Yes <input type="checkbox"/> No

MEDICAL HISTORY

9. Number of living children: <input style="width: 50px;" type="text"/>	10. Date of last live birth: <input style="width: 50px;" type="text"/> m <input style="width: 50px;" type="text"/> d <input style="width: 50px;" type="text"/> y <input style="width: 50px;" type="text"/>	
11. Number of prior abortions: Spontaneous <input style="width: 50px;" type="text"/> Induced <input style="width: 50px;" type="text"/>	12. Date of last Induced abortion: <input style="width: 50px;" type="text"/> m <input style="width: 50px;" type="text"/> d <input style="width: 50px;" type="text"/> y <input style="width: 50px;" type="text"/>	
13. Number of previous pregnancies: <input style="width: 50px;" type="text"/>	14. Contraceptive History: Was the woman practicing contraception at the time of conception? <input type="checkbox"/> Yes <input type="checkbox"/> No. <input type="checkbox"/> Unknown	
15. Method. If yes to number 14, what was the method used?: <input type="checkbox"/> Pill, Norplant, Depo-Provera <input type="checkbox"/> Surgical <input type="checkbox"/> Condom, Jelly, Cervical Cap, Sponge, Insert <input type="checkbox"/> Other (specify) _____ <input type="checkbox"/> Rhythm, Coitus Interruptus	16. First day of last menstrual period: <input style="width: 50px;" type="text"/> m <input style="width: 50px;" type="text"/> d <input style="width: 50px;" type="text"/> y <input style="width: 50px;" type="text"/>	17. Rh type of woman: <input type="checkbox"/> Negative <input type="checkbox"/> Positive

MEDICAL PROCEDURE

18. Date of Termination: <input style="width: 50px;" type="text"/> m <input style="width: 50px;" type="text"/> d <input style="width: 50px;" type="text"/> y <input style="width: 50px;" type="text"/>	19A. Clinical Estimate of Gestation in weeks: <input style="width: 50px;" type="text"/>	19B. If 19A is 14 or greater, were discharge instructions given as per O.A.C. 3701-47-02? <input type="checkbox"/> YES <input type="checkbox"/> NO
20. Method of Termination: <input type="checkbox"/> Suction Curettage <input type="checkbox"/> Sharp Curettage <input type="checkbox"/> Dilation & Extraction <input type="checkbox"/> Dilation & Evacuation <input type="checkbox"/> Saline/Urea Installation <input type="checkbox"/> Prostaglandin Installation <input type="checkbox"/> Hysterotomy <input type="checkbox"/> Hysterectomy <input type="checkbox"/> Other (specify) _____ <input type="checkbox"/> Medical (NonSurgical) Specify Medication(s) _____		
21. Medical condition of the woman at the time of the abortion: <input type="checkbox"/> Good <input type="checkbox"/> Fair <input type="checkbox"/> Other (specify) _____	22. Type of procedure done immediately after the abortion: <input type="checkbox"/> Sterilization <input type="checkbox"/> None <input type="checkbox"/> Other (specify) _____	
23. Post Abortion Complications (Indicate all): <input type="checkbox"/> None <input type="checkbox"/> Hemorrhage <input type="checkbox"/> Perforation of uterus <input type="checkbox"/> Cervical laceration <input type="checkbox"/> Infection <input type="checkbox"/> Anesthetic <input type="checkbox"/> Failed Abortion <input type="checkbox"/> Incomplete Abortio <input type="checkbox"/> Hematometra <input type="checkbox"/> Death <input type="checkbox"/> Other (specify) _____	24. Type of family planning recommended: <input type="checkbox"/> Pill, Norplant, Depo-Provera <input type="checkbox"/> Condom, Jelly, Cervical Cap, Sponge, Insert <input type="checkbox"/> Rhythm, Coitus Interruptus <input type="checkbox"/> Surgical <input type="checkbox"/> Other (specify) _____	
25. Type of Counseling given: <input type="checkbox"/> Psychological <input type="checkbox"/> Social Service <input type="checkbox"/> Pastoral <input type="checkbox"/> Medical <input type="checkbox"/> Other (specify) _____ <input type="checkbox"/> None		
26. Physician's name (Type or print):	M.D. D.O.	Physician's Signature: _____ Date: _____

**Send completed forms to:
OHIO DEPARTMENT OF HEALTH,
CONFIDENTIAL REPORTS A,
P.O. BOX 118, COLUMBUS, OHIO 43216**

Post Abortion Care Report For Complications

Ohio Department of Health

(Required Pursuant to O.A.C. 3701-47-03)

To be completed by the physician providing post-abortion care

State Use Only

1. Facility where post-abortion care was provided:			
2. Street or Post Number	City	State	Zip

3. Date of Abortion: Month Day Year ___/___/___	4. Weeks of Gestation: _____			
5A. Facility where Abortion was performed:				
5B Address of Facility:	Street or Post Number	City	State	Zip
6. Date Post Abortion Care Began: Month Day Year ___/___/___	7. Patient Number: ___/___/___/___/___/___/___/___/___/___/___/___/___/___/___			
8. Complication(s) (Please check all that apply):				
<input type="checkbox"/> Hemorrhage	<input type="checkbox"/> Anesthetic	<input type="checkbox"/> Hematometra	<input type="checkbox"/> Perforation of Uterus	
<input type="checkbox"/> Failure of Amniotic Fluid Ex	<input type="checkbox"/> RH Incompatibility	<input type="checkbox"/> Cervical Laceration	<input type="checkbox"/> Failed Abortion	
<input type="checkbox"/> Infection	<input type="checkbox"/> Incomplete Abortion	<input type="checkbox"/> Death	<input type="checkbox"/> Other (Specify) _____	
9. Duration of treatment: (Indicate number of hours or days) ___ Hours ___ Days				

10. Remarks: _____ _____ _____ _____ _____

11A. Physician's name providing care (Type or print)	11B. Physicians Signature:	M.D.	Date:
		D.O.	

Send Completed Forms to: Ohio Department of Health
Confidential Reports A
P O Box 118
Columbus OH 43216

HEA 1806
Rev 4/96