

OHIO

2004



Induced Abortions in Ohio

Ohio Department of Health

Bob Taft, Governor

J. Nick Baird, M.D., Director of Health

An equal opportunity employer/provider

Induced Abortions in Ohio, 2004

Prepared by:

**Statistical Analysis Unit
Center for Vital and Health Statistics**

**John Paulson
Supervisor**

**Donna L. Smith
Researcher**

September, 2005

Induced Abortion Program contact Persons

Statistical Analysis Unit

**John Paulson
614-644-8507**

**Donna L. Smith
614-466-7545**

**Quality Assurance
Fetal Development
Resources Directory on request**

**Lucille Raabe, Section Chief
Clinical Health Care & Provider
Svcs.
614-644-1845**

Office of General Counsel

**Rachel Belenker
614-466-4882**

TABLE OF CONTENTS

	Induced Abortion Summary	1
Figure 1	Resident Induced Abortions Ohio, 1976-2004	3
Figure 2	Selected characteristics of resident induced abortions in Ohio, 2004	5
Figure 3	Induced abortions reported in Ohio, by county of occurrence, 2004	7
Figure 4	Abortion ratio and abortion rate, by year, Ohio residents 1990-2004	9
Figure 5	Induced abortion rates per 1,000 women by age, Ohio residents, 2001-2004	11
Figure 6	Induced abortion ratio, by age group, Ohio residents, 2001 - 2004	13
Figure 7	Total Induced abortions by weeks of gestation, by year, 1990-2004	15
Table 1	Induced Abortion Summary Tables, Ohio, 2004	17
Table 2	Selected characteristics of induced abortions reported in Ohio, 1995-2004	18
Table 3	Resident induced abortions reported in Ohio, by county of residence, 1995-2004	20
Table 4	Resident induced abortions reported in Ohio, by county of residence and age, 2004	22
Table 5a	Resident induced abortions reported in Ohio, by selected counties, race, and broad age groups, 2004	24
Table 5b	Resident induced abortions reported in Ohio, by selected counties, race and age, 2004	28
Table 6	Induced abortions reported in Ohio, by county of occurrence, 1995-2004	30
Table 7	Induced abortions reported in Ohio, by method of termination and county of occurrence, 2004	31

Table 8	Total induced abortions reported in Ohio, by gestational age, 2004	32
Table 9	Resident induced abortions reported in Ohio, by age of women obtaining abortion and by number of prior induced abortions, 2004	33
Table 10a	Total induced abortions in Ohio with post abortion complications, by type of complication, 2004 (Data Source is 'Post-Abortion Care Report for Complications')	34
Table 10b	Total induced abortions in Ohio with post abortion complications, by type of complication, 2004 (Data Source is 'Confidential Abortion Report')	35
Table 11	Total induced abortions in Ohio with post abortion complications, by type of complication and gestation period, 2004 (Data Source is 'Post Abortion Care Report for Complications')	36
Table 12	Total induced abortions in Ohio with post abortion complications, by type of complication and termination method, 2004 (Data source is "Confidential Abortion Report")	37
Appendix I	Confidential Abortion Report form	39
Appendix II	Post-Abortion Care Report for Complications form	41

Induced Abortion Summary

Background

Induced abortions must be reported to the Ohio Department of Health by the physician who performed the abortion, using the form "Confidential Abortion Reports." The report includes demographic and medical history information about the woman obtaining the abortion and information about the medical procedure. These reports are used to produce statistical reports about abortions occurring in Ohio. The forms are confidential: no identifying information about women who obtain abortions is collected except the medical record number. Physicians providing post abortion care for complications are required to file a "Post Abortion Care Report for Complications." It is not possible to link these post-abortion reports to the "Confidential Abortion Reports." Both types of reports contain information about complications and are used to create statistical reports about post-abortion complications. This report presents information derived from both "Confidential Abortion Reports" and "Post-Abortion Care Reports for Complications" for 2004 in Ohio (reporting forms are included as Appendices I and II).

Characteristics of Induced Abortions Reported in Ohio, 2004

Induced abortion statistics are available for Ohio dating back to 1976. In 1994 the reporting form was improved, so many trend comparisons in this summary date back to 1995. We also compare the 2003 abortions to 2004 occurrences to show more recent trend developments.

A total of 34,242 induced pregnancy terminations were reported in Ohio for 2004, including 31,391 for Ohio residents (91.7%). The number of total abortions performed in Ohio has seen a decline annually since 2000. (Figure 1)

Approximately one sixth of women who obtained abortions were under 20 years of age, with another third between the ages of 20-24 years of age (figure 2). The age distribution of women obtaining abortions has remained fairly unchanged since 1994. Approximately 82% of women who obtained an abortion were unmarried. The marital status distribution has remained constant since 1994. Fifty-eight percent of resident women who obtained abortions were White, 39% were African American, and 3% were other races or unknown. Four percent of abortions were obtained by women of Hispanic origin.

The 2004 Ohio abortion rate was 13 per 1,000 women ages 15-44 years (figure 4). The most recent comparable rate for the US was slightly higher at 16 per 1,000 women (year 2001). The 2004 Ohio abortion ratio was 217 abortions per 1,000 live births, a ratio that is also slightly lower than the 2000 US abortion ratio of 247 abortions per 1,000 live births. African American Ohio women had an abortion rate per 1,000 women that was approximately four times as high as among white women (38 vs. 9 per 1,000). African American Ohio women experienced a higher fertility rate as well (72 vs. 60 per 1,000 women ages 15-44 in 2002). The abortion ratio among African American Ohio women was 3.5 times higher than among whites (529 abortions per 1,000 live births vs. 150 per 1,000).

In 2004, approximately 38% of women obtaining abortions in Ohio reported no prior pregnancies. Over half of all induced abortions involved pregnancies of less than 9 weeks (58%), with approximately 28% involving pregnancies of 9-12 weeks (figure 2). The proportion involving abortions of less than 9 weeks increased from 42% in 1995, while the proportion between 9 and 12 weeks declined from 40% to 28% (figure 7). There were 731 abortions involving pregnancies of 20 or more weeks, a number that increased from 712 in 1995. All but one reported abortions were obtained in seven major metropolitan areas of Ohio.

There were changes between 2002 and 2004 in method of termination for induced abortions performed in Ohio. Suction curettage remained the most frequent method of termination at 76%. That method has decreased steadily since 2000, when 92% of terminations were by suction curettage. Medical/non-surgical procedures are the second most common method (13%). The number of medical/non-surgical procedures increased to 4,542, representing a 27% increase over 2003. Dilation and evacuation was the third most common method (7%).

Specific details about medical/non-surgical procedures have not been keyed from Ohio abortion reports, which makes it difficult to tabulate the specific procedures used in Ohio. We did, however, examine a sample of these reports and the majority of these medical/surgical procedures were methotrexate and misoprostol administration. The medical procedures used most commonly in early abortions nationally are methotrexate with misoprostol and mifepristone with misoprostol (Goldberg AM, Greenberg MB, Darney PD. Drug therapy: miosprostol and pregnancy. N Engl J Med 2001;344:38-47). The FDA approved mifepristone for medical abortions in 2000. That approval was expected to shift many of the early abortions from surgical to non-surgical methods.

Reported post-abortion complications were rare, averaging approximately 2 per 1,000 procedures. Sixty-four complications were reported on the "Confidential Abortion Reports". The most common types of abortion complications were cervical laceration and incomplete abortion.

County of residence for women obtaining abortions is reported in tables 3, 4, 5a, and 5b. In accordance with Ohio Department of Health data disclosure policies, some counties were removed from tables 5a and 5b. The removed counties had fewer than 25 female residents in the reported age/race categories.

Figure 1. Resident induced abortions, Ohio, 1976 - 2004

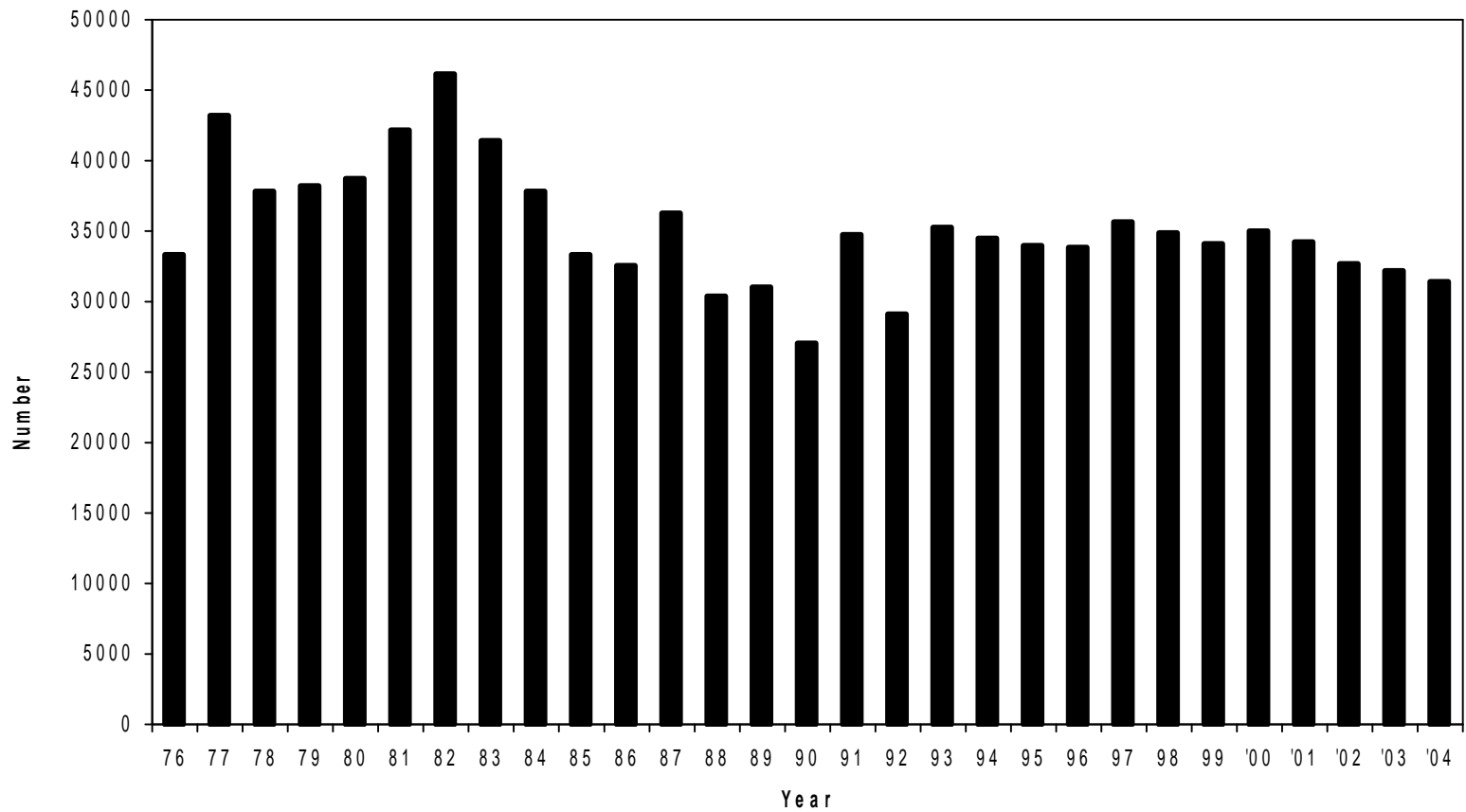
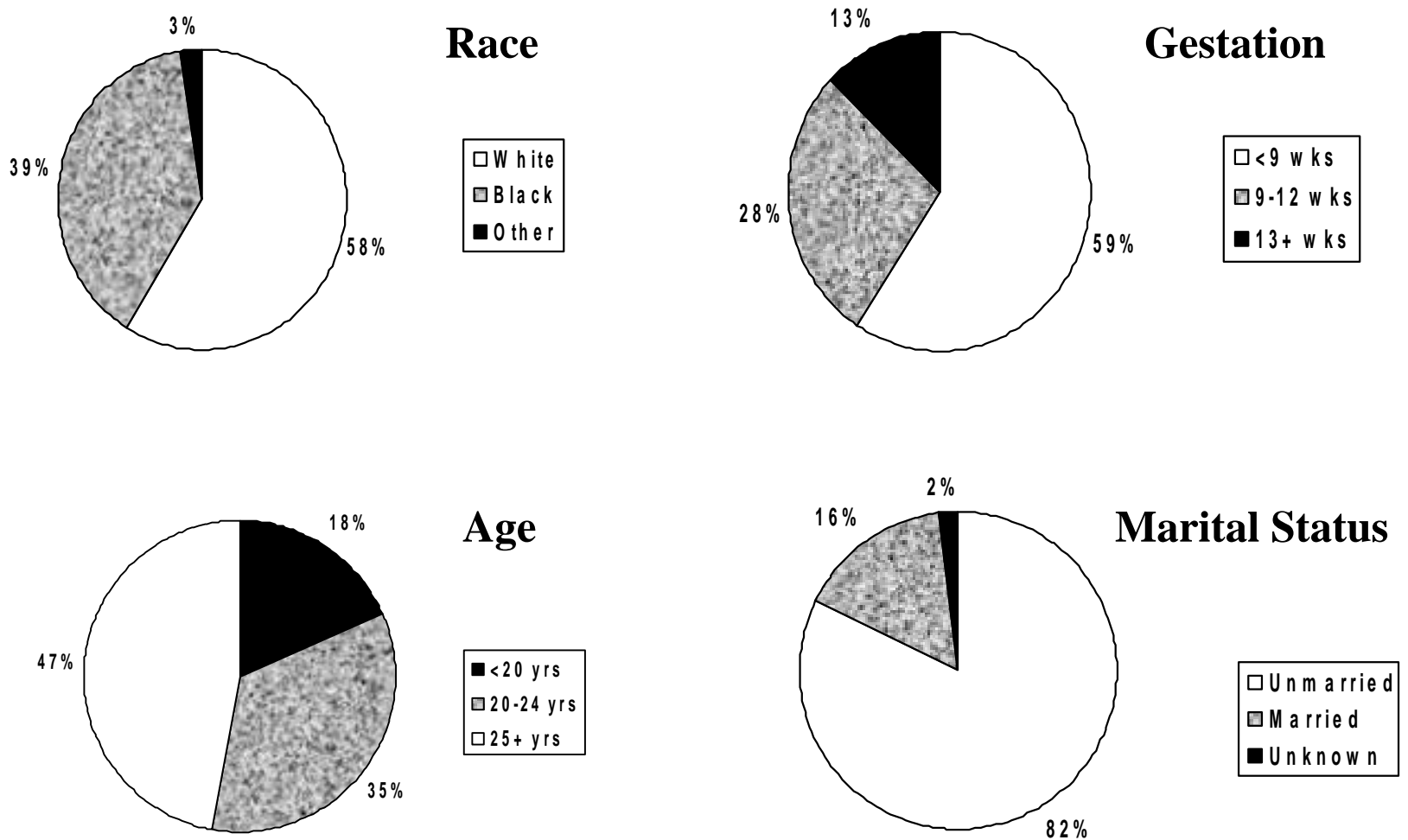


Figure 2. Selected characteristics of resident induced abortions in Ohio, 2004



Excludes Unknown unless otherwise stated

Figure 3. Induced abortions reported in Ohio, by county of occurrence, 2004

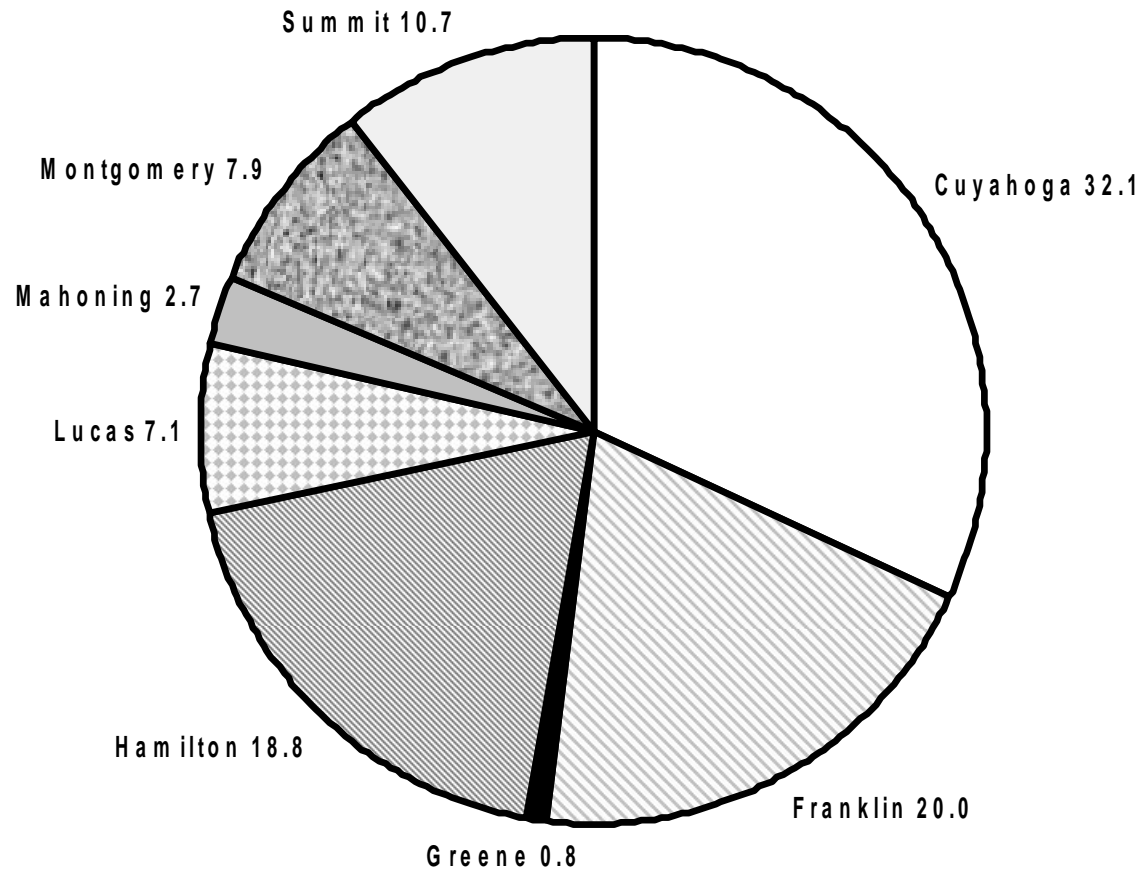
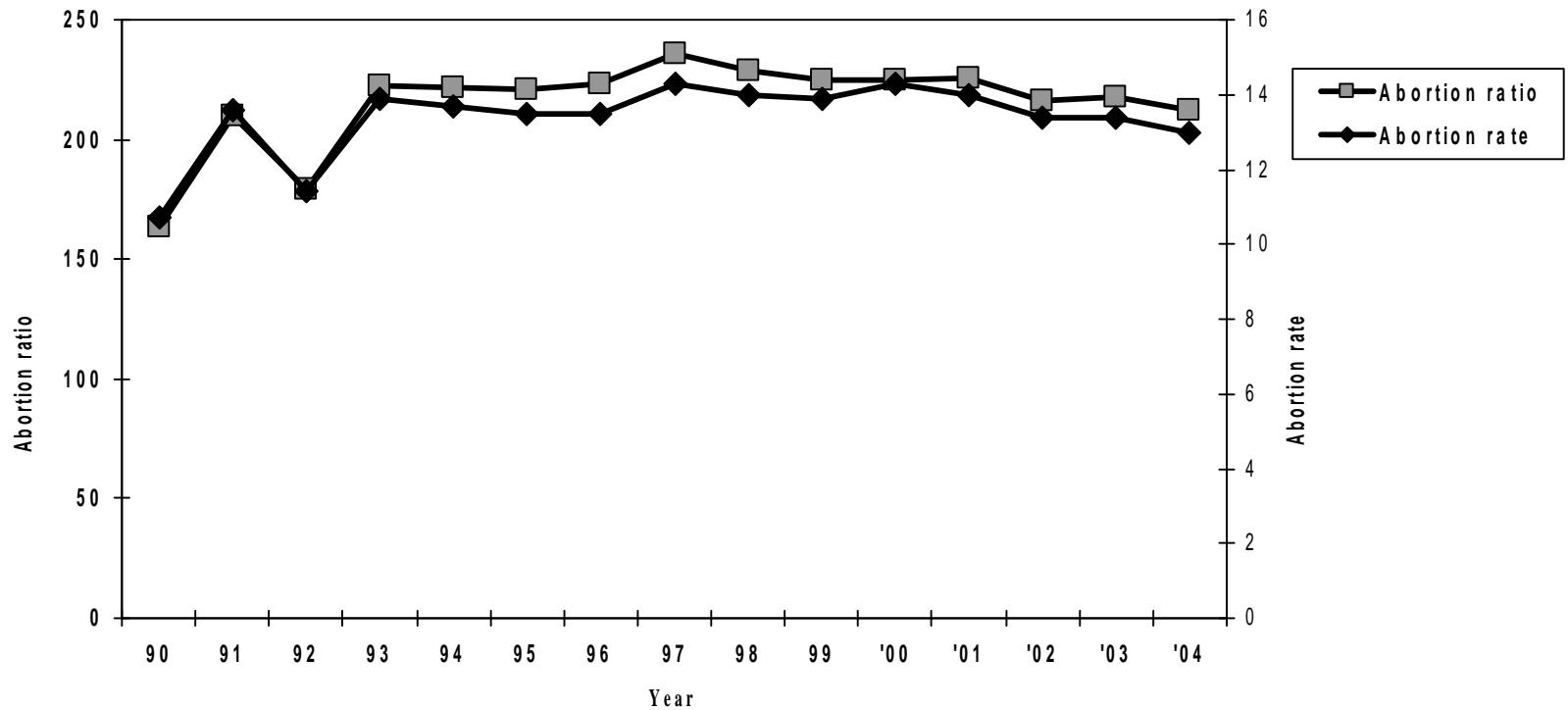
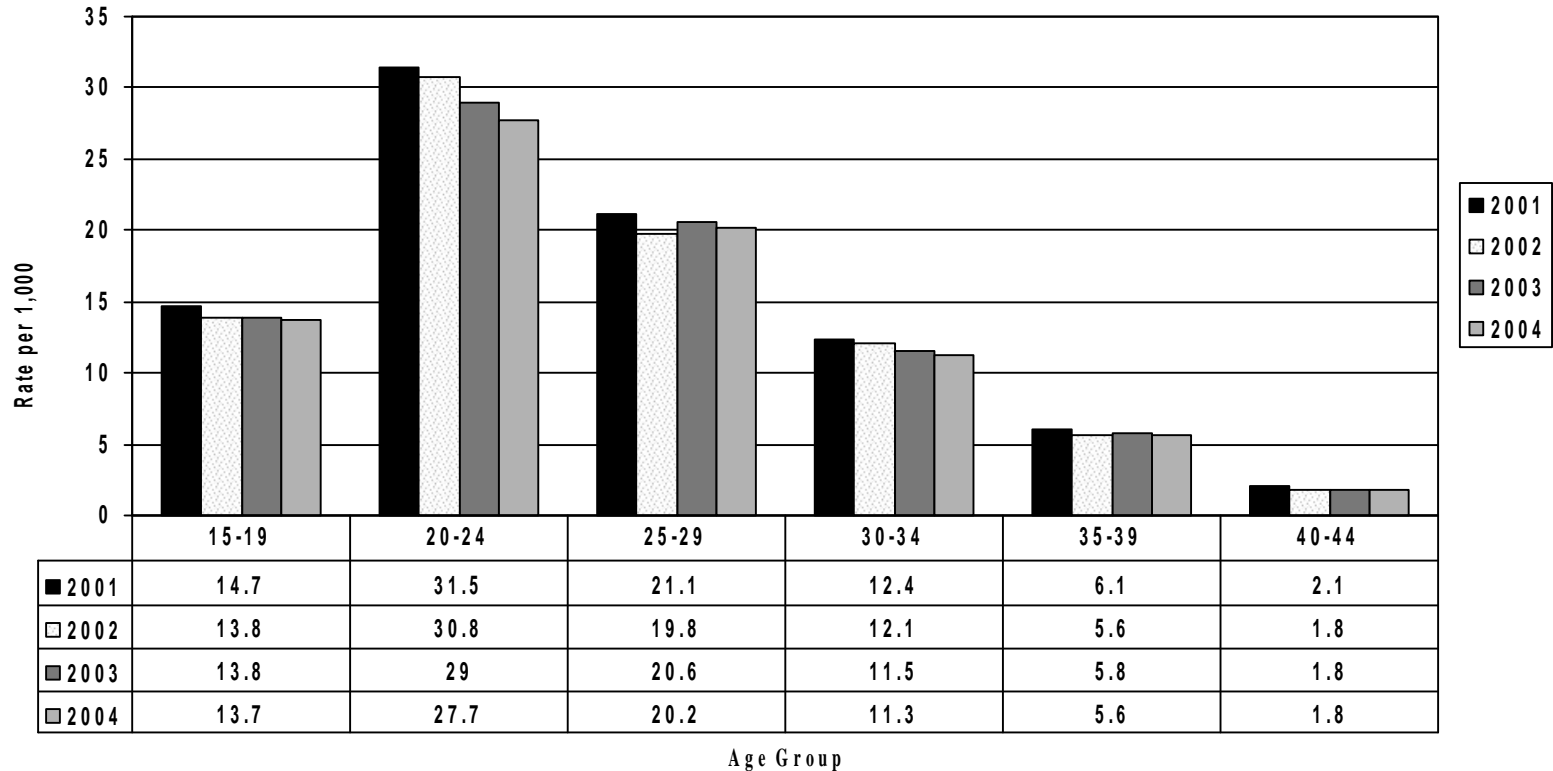


Figure 4. Abortion ratio and abortion rate, by year, Ohio residents, 1990 - 2004



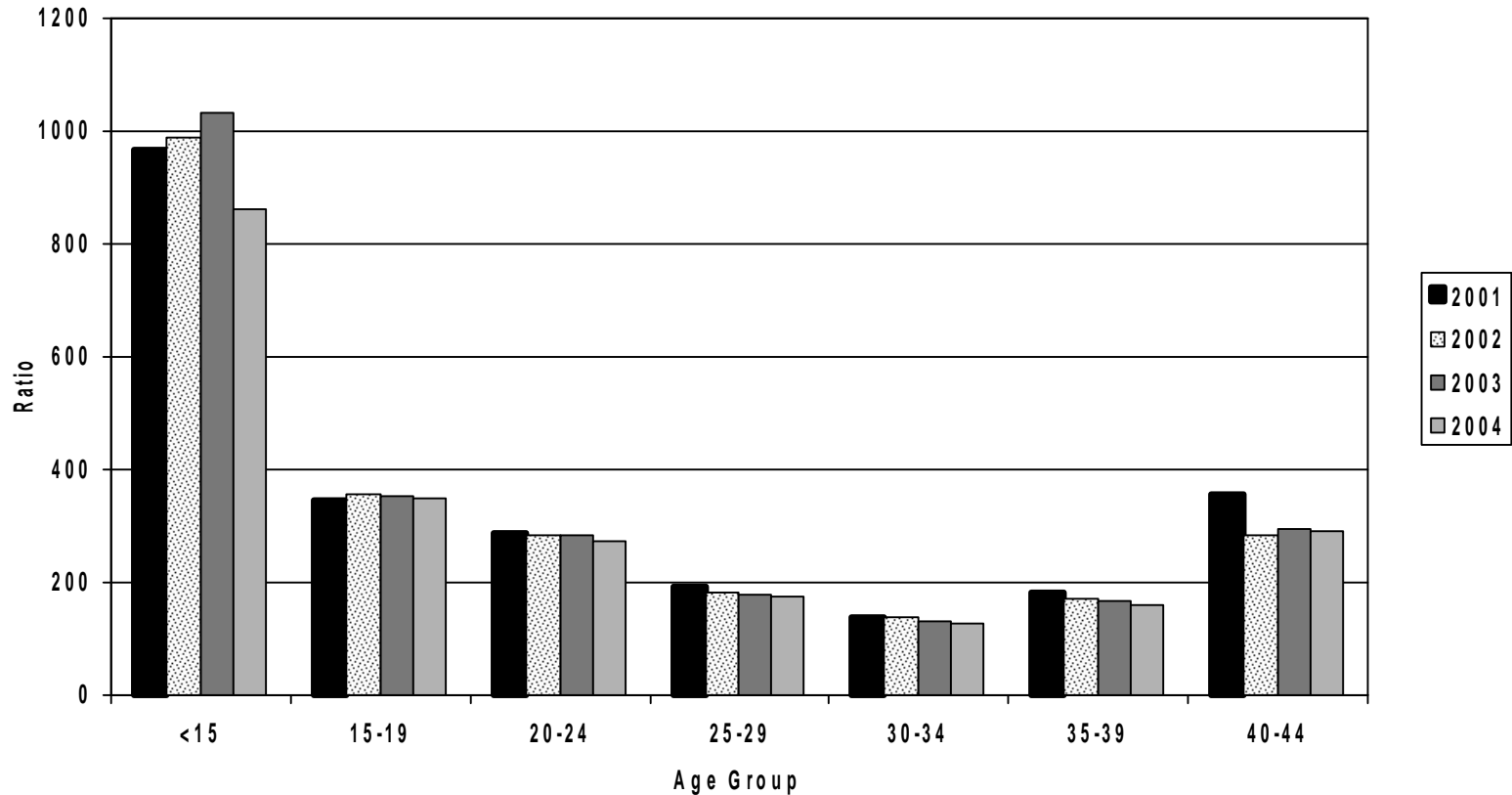
Abortion ratio is number of abortions per 1,000 live births. 2002 births were used for calculating 2002-2004 ratio. Abortion rate is number of abortions per 1,000 women ages 15-44.

Figure 5. Induced abortion rates per 1,000 women by age, Ohio residents, 2001 - 2004



Abortion rate is number of abortions per 1,000 female population in specified age group.

Figure 6. Induced abortion ratio, by age group, Ohio residents, 2001 - 2004



Abortion ratio is number of abortions per 1,000 live births in specified age group. 2002 births were used To calculate 2002-2004 ratios.

Figure 7. Total Induced abortions by weeks of gestation, by year, 1990-2004

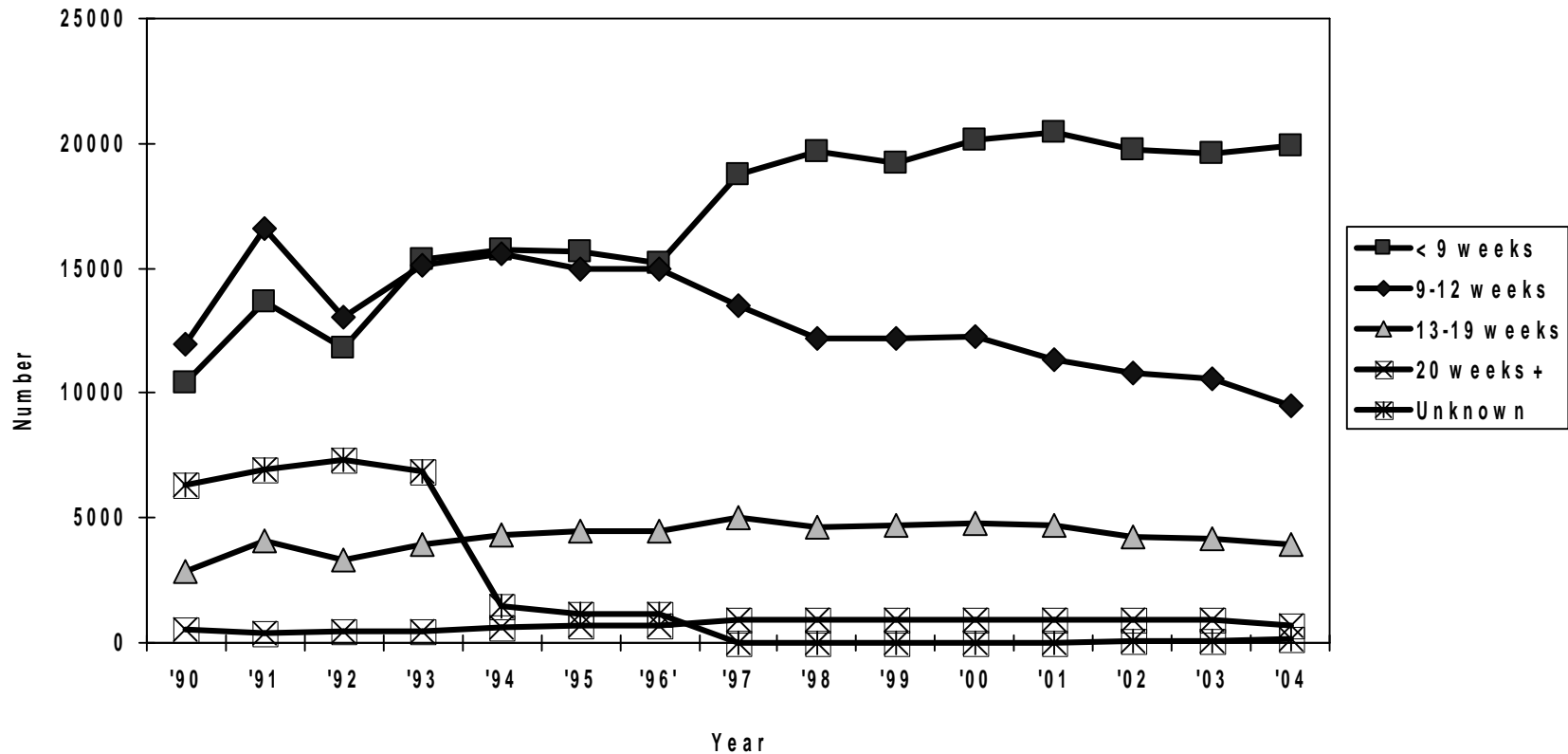


TABLE 1

INDUCED ABORTION SUMMARY TABLE, OHIO, 2004

CHARACTERISTICS	NUMBER	PERCENT
TOTAL INDUCED ABORTIONS	34,242	100.0
RESIDENCE:		
Ohio Resident	31391	91.7
Out-of-State Resident	2851	8.3
AGE:		
Under 20 Years	6,164	18.0
20-24 Years	11,772	34.4
25 Years and Over	16,097	47.0
Age Not Reported	209	0.6
RACE GROUP:		
White	19,952	58.3
Black	12,028	35.1
American Indian	76	0.2
Asian/Pacific Islander	731	2.1
Other/Unknown	1,455	4.2
HISPANIC:		
Non-Hispanic	32,815	95.8
Hispanic	1,204	3.5
Unknown	223	0.7
LEVEL OF EDUCATION:		
Grade 1-8	675	2.0
Grade 9-12	21,222	62.0
1-2 Yrs College	6,184	18.1
3-4 Yrs College	4,638	13.5
5+ Yrs College	941	2.7
Unknown	582	1.7
MARITAL STATUS:		
Married <u>1</u> /	5,512	16.1
Unmarried <u>2</u> /	28,039	81.9
Not Reported	691	2.0
NUMBER OF LIVING CHILDREN:		
None	9,007	26.3
One	9,535	27.8
Two or More	11,515	33.6
Not Reported	4,185	12.2
WEEKS OF GESTATION:		
Less than 9 Weeks	19,933	58.2
9-12 Weeks	9,489	27.7
13 Weeks and Over	4,675	13.7
Not Reported	145	0.4

1/ Includes Separated2/ Includes Never Married, Divorced, Widowed

TABLE 2

SELECTED CHARACTERISTICS OF INDUCED ABORTIONS REPORTED IN OHIO, 1995-2004

Characteristic	2004	2003	2002	2001	2000	1999	1998	1997	1996	1995
<u>NUMBER OF ABORTIONS</u>										
TOTAL INDUCED ABORTIONS	34242	35319	35830	37464	38140	37041	37479	38242	36530	36950
RESIDENCE:										
Ohio Resident	31391	32180	32687	34174	35022	34134	34829	35650	33836	33985
Out-of-State Resident	2851	3139	3143	3290	3118	2907	2606	2509	2635	2879
Unknown	0	0	0	0	0	0	44	83	59	86
AGE:										
Under 15 Years	253	292	277	286	314	279	334	354	200	195
15-19 Years	5911	6014	6098	6485	6860	6997	7395	7795	6382	6604
20-24 Years	11772	12441	12370	12710	13029	12391	12447	12682	12200	12742
25-29 Years	7655	7836	7984	8531	8885	8774	8973	8951	8733	8514
30-34 Years	4875	4980	5205	5299	5073	4797	4528	4689	4695	4880
35-39 Years	2589	2660	2775	2956	2957	2857	2859	2859	3055	2906
40-44 Years	910	938	906	1064	948	883	876	833	954	880
45 Years & Older	68	55	61	114	53	37	42	35	66	65
Unknown	209	103	154	19	21	26	25	44	245	164
EDUCATION:										
Less than Grade 9	675	756	755	797	612	493	632	644	584	647
Grade 9-12	21222	22359	22742	23834	24281	23287	23911	24547	20651	21154
1 Or More College Years	11763	11924	11893	12593	12823	11919	11860	12495	12888	13043
None/Not Reported	582	280	440	240	424	1342	1076	556	2407	2106
RACE:										
White	19952	20717	20934	22045	22581	22143	22366	22894	22438	22970
Black	12028	12463	12689	13160	13480	12680	12155	12377	11563	11606
Asian/Pacific Islander	731	731	740	775	782	720	661	718	519	496
Other/Unknown/Not Reported	1531	1418	1467	1484	1297	1498	2297	2253	2010	1878
MARITAL STATUS:										
Never Married	25489	26263	26140	27276	27460	25944	25997	26720	25292	25567
Married	4366	4737	4720	5058	5245	4928	4904	5082	4974	4959
Separated	1146	1148	1215	1381	1374	1334	1317	1331	1379	1432
Divorced	2462	2663	2892	3104	3300	3350	3502	3624	3777	3944
Widowed	88	89	100	110	126	101	114	116	135	129
Unknown	691	419	763	535	635	1384	1645	1369	973	919
NUMBER OF LIVING CHILDREN:										
No Children	9007	9913	10154	10866	11103	11480	11861	13884	12298	11998
One Child	9535	9805	9970	10719	11006	10650	10726	10774	10064	9905
Two or more Children	11515	11800	12179	12638	12679	12030	11546	11417	10451	10257
Unknown	4185	3801	3527	3241	3352	2881	3346	2167	3717	4790
WEEKS OF GESTATION:										
Less than 9 Weeks	19933	19610	19755	20432	20161	19212	19708	18784	15236	15646
9 - 12 Weeks	9489	10570	10820	11350	12293	12221	12183	13516	14965	14933
13 - 19 Weeks	3944	4133	4271	4738	4772	4695	4631	5004	4453	4496
20 Weeks and Over	731	961	929	921	906	912	944	915	691	712
Unknown	145	45	55	23	8	1	13	23	1185	1163

Table 2. Induced Abortions, 1995-2004 (page 2)

Characteristic	2004	2003	2002	2001	2000	1999	1998	1997	1996	1995
<u>PERCENTAGE DISTRIBUTION</u>										
TOTAL INDUCED ABORTIONS	100.0	100.0	100.0	100.0	100.0	100.0	100.0	100.0	100.0	100.0
RESIDENCE:										
Ohio Resident	91.7	91.1	91.2	91.2	91.8	92.2	92.9	93.2	92.6	92.0
Out-of-State Resident	8.3	8.9	8.8	8.8	8.2	7.8	7.0	6.6	7.2	7.8
Unknown	0.0	0.0	0.0	0.0	0.0	0.0	0.1	0.2	0.2	0.2
AGE:										
Under 15 Years	0.7	0.8	0.8	0.8	0.8	0.8	0.9	0.9	0.5	0.5
15-19 Years	17.3	17.0	17.0	17.3	18.0	18.9	19.7	20.4	17.5	17.9
20-24 Years	34.4	35.2	34.5	33.9	34.2	33.5	33.2	33.2	33.4	34.5
25-29 Years	22.4	22.2	22.3	22.8	23.3	23.7	23.9	23.4	23.9	23.0
30-34 Years	14.2	14.1	14.5	14.1	13.3	13.0	12.1	12.3	12.9	13.2
35-39 Years	7.6	7.5	7.7	7.9	7.8	7.7	7.6	7.5	8.4	7.9
40-44 Years	2.7	2.7	2.5	2.8	2.5	2.4	2.3	2.2	2.6	2.4
45 Years & Older	0.2	0.2	0.2	0.3	0.1	0.1	0.1	0.1	0.2	0.2
Unknown	0.6	0.3	0.4	0.1	0.1	0.1	0.1	0.1	0.7	0.4
EDUCATION:										
Less than Grade 9	2.0	2.1	2.1	2.1	1.6	1.3	1.7	1.7	1.6	1.8
Grade 9-12	62.0	63.3	63.5	63.6	63.7	62.9	63.8	64.2	56.5	57.3
1 Or More College Years	34.4	33.8	33.2	33.6	33.6	32.2	31.6	32.7	35.3	35.3
None/Not Reported	1.7	0.8	1.2	0.6	1.1	3.6	2.9	1.5	6.6	5.7
RACE:										
White	58.3	58.7	58.4	58.8	59.2	59.8	59.7	59.9	61.4	62.2
Black	35.1	35.3	35.4	35.1	35.3	34.2	32.4	32.4	31.7	31.4
Asian/Pacific Islander	2.1	2.1	2.1	2.1	2.1	1.9	1.8	1.9	1.4	1.3
Other/Unknown/Not Reported	4.5	4.0	4.1	4.0	3.4	4.0	6.1	5.9	5.5	5.1
MARITAL STATUS:										
Never Married	74.4	74.4	73.0	72.8	72.0	70.0	69.4	69.9	69.2	69.2
Married	12.8	13.4	13.2	13.5	13.8	13.3	13.1	13.3	13.6	13.4
Separated	3.3	3.3	3.4	3.7	3.6	3.6	3.5	3.5	3.8	3.9
Divorced	7.2	7.5	8.1	8.3	8.7	9.0	9.3	9.5	10.3	10.7
Widowed	0.3	0.3	0.3	0.3	0.3	0.3	0.3	0.3	0.4	0.3
Unknown	2.0	1.2	2.1	1.4	1.7	3.7	4.4	3.6	2.7	2.5
NUMBER OF LIVING CHILDREN:										
No Children	26.3	28.1	28.3	29.0	29.1	31.0	31.6	36.3	33.7	32.5
One Child	27.8	27.8	27.8	28.6	28.9	28.8	28.6	28.2	27.5	26.8
Two or more Children	33.6	33.4	34.0	33.7	33.2	32.5	30.8	29.9	28.6	27.8
Unknown	12.2	10.8	9.8	8.7	8.8	7.8	8.9	5.7	10.2	13.0
WEEKS OF GESTATION:										
Less than 9 Weeks	58.2	55.5	55.1	54.5	52.9	51.9	52.6	49.1	41.7	42.3
9 - 12 Weeks	27.7	29.9	30.2	30.3	32.2	33.0	32.5	35.3	41.0	40.4
13 - 19 Weeks	11.5	11.7	11.9	12.6	12.5	12.7	12.4	13.1	12.2	12.2
20 Weeks and Over	2.1	2.7	2.6	2.5	2.4	2.5	2.5	2.4	1.9	1.9
Unknown	0.4	0.1	0.2	0.1	0.0	0.0	0.0	0.1	3.2	3.1

TABLE 3

RESIDENT INDUCED ABORTIONS REPORTED IN OHIO, BY COUNTY OF RESIDENCE, 1995-2004

Residence	2004	2003	2002	2001	2000	1999	1998	1997	1996	1995
OHIO	31391	32180	32687	34174	35022	34134	34829	35650	33813	33958
Adams	15	18	15	16	22	24	28	36	36	41
Allen	190	159	166	153	165	176	184	207	202	206
Ashland	57	64	47	67	69	74	70	57	55	68
Ashtabula	216	214	228	228	222	195	233	264	384	356
Athens	123	121	119	113	131	163	149	196	135	142
Auglaize	37	47	39	47	54	51	52	61	51	59
Belmont	29	30	24	25	41	26	38	39	22	27
Brown	44	46	67	63	71	75	71	71	55	55
Butler	843	771	773	796	769	854	859	901	951	952
Carroll	34	32	35	38	40	36	35	33	36	21
Champaign	63	52	45	58	74	61	72	70	71	68
Clark	279	331	300	342	357	319	346	349	395	357
Clermont	326	326	344	385	395	429	405	408	263	292
Clinton	45	60	74	76	74	75	62	65	80	88
Columbiana	179	162	220	202	189	178	172	179	188	191
Coshocton	32	43	35	26	34	36	42	31	19	45
Crawford	55	45	58	58	74	70	78	66	56	38
Cuyahoga	7565	7889	8466	8644	8906	8790	8717	8732	8098	8232
Darke	47	47	61	45	44	54	51	67	83	49
Defiance	37	37	37	35	43	32	69	45	68	49
Delaware	171	169	142	130	178	117	149	149	139	131
Erie	170	183	209	227	220	216	201	213	233	176
Fairfield	204	184	185	179	184	193	186	194	115	147
Fayette	41	43	27	49	44	36	45	46	56	40
Franklin	4678	4684	4290	4645	4764	4056	4143	4276	3395	3385
Fulton	41	36	43	52	48	75	62	56	78	86
Gallia	17	12	15	15	19	19	18	24	11	8
Geauga	139	121	152	135	161	148	144	137	126	123
Greene	314	311	322	306	379	321	411	390	379	385
Guernsey	49	46	61	44	59	66	56	77	47	48
Hamilton	3172	3046	3374	3559	3578	3593	3701	3814	3925	4032
Hancock	120	115	121	109	118	126	134	133	125	120
Hardin	47	35	28	36	29	40	51	36	50	32
Harrison	6	9	13	10	15	12	18	20	10	21
Henry	34	28	29	23	32	42	30	28	52	49
Highland	50	53	49	44	46	60	67	68	66	58
Hocking	26	26	29	25	34	30	27	44	17	29
Holmes	18	19	21	22	20	12	23	13	30	19
Huron	79	77	101	123	118	102	115	135	114	105
Jackson	28	34	26	35	27	32	30	35	20	27
Jefferson	17	25	23	30	23	24	22	21	21	19
Knox	66	64	67	65	65	54	70	64	48	47
Lake	571	592	598	654	563	624	594	616	520	527
Lawrence	15	32	21	18	10	18	27	20	18	20

TABLE 4

RESIDENT INDUCED ABORTIONS REPORTED IN OHIO, BY COUNTY AND AGE, 2004

Residence	Total	Age Group											Unk.	
		<15	15	16	17	18	19	20-24	25-29	30-34	35-39	40-44		45+
OHIO TOTAL	31391	228	407	683	872	1607	1887	10774	7015	4465	2361	838	60	194
Adams	15	0	1	0	0	0	0	7	4	2	0	1	0	0
Allen	190	0	1	7	12	11	11	67	40	24	14	2	0	1
Ashland	57	0	0	0	0	4	3	19	9	7	11	4	0	0
Ashtabula	216	2	3	6	6	10	14	72	44	41	15	3	0	0
Athens	123	1	1	0	1	4	14	67	12	15	2	3	0	3
Auglaize	37	0	0	3	2	2	2	7	9	5	6	0	1	0
Belmont	29	0	2	2	1	0	2	14	6	1	1	0	0	0
Brown	44	1	0	2	1	0	1	13	16	4	5	1	0	0
Butler	843	6	22	24	20	46	52	285	181	121	58	22	4	2
Carroll	34	1	1	1	1	1	4	6	11	5	2	0	0	1
Champaign	63	0	1	3	2	4	2	22	16	9	3	1	0	0
Clark	279	2	2	11	12	16	17	93	48	43	27	8	0	0
Clermont	326	1	4	5	7	14	17	131	69	34	31	11	1	1
Clinton	45	0	1	1	2	2	2	20	9	3	3	1	0	1
Columbiana	179	2	0	6	8	12	11	54	41	22	11	10	1	1
Coshocton	32	0	0	0	2	0	2	15	7	3	2	1	0	0
Crawford	55	0	2	0	1	5	6	22	11	4	2	2	0	0
Cuyahoga	7565	65	94	156	191	332	386	2472	1766	1208	595	228	17	55
Darke	47	0	2	0	1	4	3	15	10	5	3	4	0	0
Defiance	37	0	1	0	1	6	4	15	4	2	2	1	1	0
Delaware	171	1	1	2	6	9	14	48	30	26	23	9	1	1
Erie	170	0	1	3	6	10	14	49	45	24	10	7	0	1
Fairfield	204	1	0	2	6	16	12	73	37	34	19	3	1	0
Fayette	41	0	0	1	1	4	5	9	11	5	3	2	0	0
Franklin	4678	30	46	103	97	204	298	1559	1168	700	321	121	7	24
Fulton	41	2	3	2	3	2	1	8	12	3	2	2	0	1
Gallia	17	1	1	0	0	0	0	8	6	1	0	0	0	0
Geauga	139	0	0	8	3	9	7	46	17	18	20	9	0	2
Greene	314	2	10	5	10	16	24	126	53	30	26	11	1	0
Guernsey	49	1	2	3	4	2	4	16	11	3	2	0	0	1
Hamilton	3172	38	41	60	75	158	185	1080	751	449	232	79	5	19
Hancock	120	1	0	5	6	5	6	48	30	13	6	0	0	0
Hardin	47	0	1	1	1	3	6	14	5	8	5	2	0	1
Harrison	6	0	1	0	0	0	1	4	0	0	0	0	0	0
Henry	34	0	0	0	1	1	1	19	9	2	1	0	0	0
Highland	50	0	1	0	1	2	6	17	12	6	3	1	0	1
Hocking	26	0	0	1	1	2	0	11	5	4	1	0	0	1
Holmes	18	0	1	1	0	3	1	7	2	3	0	0	0	0
Huron	79	0	0	0	1	5	5	28	20	7	10	2	1	0
Jackson	28	1	0	0	2	0	2	13	5	1	3	1	0	0
Jefferson	17	0	0	0	0	1	1	5	4	5	1	0	0	0
Knox	66	0	0	3	2	1	2	23	12	15	5	3	0	0
Lake	571	0	8	19	25	40	36	194	102	72	51	19	2	3
Lawrence	15	0	0	0	1	0	0	6	5	2	1	0	0	0

TABLE 4. Resident Induced Abortions, 2004 (Page 2)

Residence	Total	Age Group												
		<15	15	16	17	18	19	20-24	25-29	30-34	35-39	40-44	45+	Unk.
Licking	259	1	6	8	8	18	10	85	56	33	24	9	0	1
Logan	50	1	1	0	4	3	6	16	9	5	2	3	0	0
Lorain	812	1	9	16	35	45	44	285	158	117	66	26	5	5
Lucas	1603	16	26	31	51	81	97	604	358	204	96	28	0	11
Madison	49	0	2	2	0	1	0	18	9	8	5	1	1	2
Mahoning	759	5	8	10	27	47	49	259	186	87	57	17	1	6
Marion	75	1	3	3	4	7	6	27	8	13	2	1	0	0
Medina	306	0	4	8	6	19	19	108	61	42	29	9	0	1
Meigs	12	0	0	0	1	0	1	5	2	1	2	0	0	0
Mercer	36	1	0	0	0	3	1	17	8	5	0	1	0	0
Miami	163	3	3	1	5	9	12	63	25	24	13	3	0	2
Monroe	15	0	0	0	1	2	1	4	2	4	1	0	0	0
Montgomery	1632	11	26	38	51	98	93	544	353	255	119	29	2	13
Morgan	4	0	0	0	0	0	0	2	0	2	0	0	0	0
Morrow	33	0	0	0	0	6	2	12	4	2	6	1	0	0
Muskingum	127	2	2	1	2	6	13	49	27	11	11	3	0	0
Noble	5	0	0	0	0	1	1	2	0	1	0	0	0	0
Ottawa	56	0	0	2	2	2	2	23	12	7	2	4	0	0
Paulding	7	0	0	0	1	0	1	2	2	1	0	0	0	0
Perry	34	0	1	4	0	1	2	11	7	5	3	0	0	0
Pickaway	71	0	0	3	4	8	4	26	14	6	6	0	0	0
Pike	27	0	0	0	0	0	1	14	4	3	3	2	0	0
Portage	429	1	2	5	12	22	31	174	81	53	34	11	1	2
Preble	38	0	2	1	1	3	1	14	9	1	5	1	0	0
Putnam	25	1	0	1	1	1	0	14	2	3	2	0	0	0
Richland	184	1	3	7	5	12	18	62	44	18	9	5	0	0
Ross	107	1	4	6	6	6	4	31	26	12	9	1	0	1
Sandusky	101	0	0	3	5	6	6	34	22	16	5	3	0	1
Scioto	74	0	1	2	2	2	8	35	9	10	2	3	0	0
Seneca	65	0	0	4	0	2	7	22	18	2	6	4	0	0
Shelby	54	0	0	1	2	4	6	23	12	3	1	1	0	1
Stark	795	5	8	16	23	44	52	277	164	111	56	28	0	11
Summit	1677	8	13	34	46	99	121	607	364	212	126	37	2	8
Trumbull	493	3	12	15	8	31	23	166	109	71	36	15	2	2
Tuscarawas	135	1	4	3	3	6	5	46	34	19	12	2	0	0
Union	59	1	1	1	5	5	3	19	7	11	6	0	0	0
Van Wert	13	0	2	0	1	0	2	4	3	1	0	0	0	0
Vinton	11	0	0	0	1	1	1	2	2	3	0	0	0	1
Warren	246	2	5	3	15	11	10	71	56	40	25	5	1	2
Washington	25	0	1	0	0	4	3	5	4	5	1	2	0	0
Wayne	128	1	2	2	2	6	8	49	20	17	15	3	1	2
Williams	34	0	0	2	0	2	1	15	5	3	6	0	0	0
Wood	254	2	1	4	7	14	26	98	48	26	19	6	1	2
Wyandot	20	0	0	0	2	3	2	3	6	3	1	0	0	0

TABLE 5a

RESIDENT INDUCED ABORTIONS REPORTED IN OHIO, BY SELECTED
COUNTIES, RACE AND BROAD AGE GROUPS, 2004

County/Race	Total	Age Group					Unk
		10-19	20-29	30-39	40-49	50 +	
OHIO	31391	5684	17789	6826	897	1	194
White	17716	3254	9873	3906	578	0	105
Black	11581	2120	6769	2377	239	1	75
Oth/Unk	2094	310	1147	543	80	0	14
ALLEN	190	42	107	38	2	0	1
White	130	20	80	29	1	0	0
Black	52	19	24	7	1	0	1
Oth/Unk	8	3	3	2	0	0	0
ASHTABULA	216	41	116	56	3	0	0
White	197	39	105	50	3	0	0
Black	14	1	9	4	0	0	0
Oth/Unk	5	1	2	2	0	0	0
ATHENS	123	21	79	17	3	0	3
White	104	17	72	13	0	0	2
Black	9	3	3	2	1	0	0
Oth/Unk	10	1	4	2	2	0	1
BUTLER	843	170	466	179	26	0	2
White	622	149	329	122	21	0	1
Black	132	11	81	37	2	0	1
Oth/Unk	89	10	56	20	3	0	0
CLARK	279	60	141	70	8	0	0
White	215	44	108	56	7	0	0
Black	48	12	26	9	1	0	0
Oth/Unk	16	4	7	5	0	0	0
CLERMONT	326	48	200	65	12	0	1
White	299	48	180	59	11	0	1
Black	12	0	10	1	1	0	0
Oth/Unk	15	0	10	5	0	0	0
COLUMBIANA	179	39	95	33	11	0	1
White	164	36	87	30	10	0	1
Black	12	3	5	3	1	0	0
Oth/Unk	3	0	3	0	0	0	0
CUYAHOGA	7565	1224	4238	1803	244	1	55
White	2361	357	1265	621	107	0	11
Black	4697	788	2703	1054	112	1	39
Oth/Unk	507	79	270	128	25	0	5

Table 5a. Resident Induced Abortions, 2004 (Page 2)

County/Race	Total	Age Group					Unk
		10-19	20-29	30-39	40-49	50 +	
DELAWARE	171	33	78	49	10	0	1
White	136	29	62	36	9	0	0
Black	16	1	10	5	0	0	0
Oth/Unk	19	3	6	8	1	0	1
ERIE	170	34	94	34	7	0	1
White	122	20	67	27	7	0	1
Black	40	11	23	6	0	0	0
Oth/Unk	8	3	4	1	0	0	0
FAIRFIELD	204	37	110	53	4	0	0
White	173	33	94	42	4	0	0
Black	24	3	14	7	0	0	0
Oth/Unk	7	1	2	4	0	0	0
FRANKLIN	4678	778	2727	1021	128	0	24
White	2326	388	1338	524	65	0	11
Black	1897	325	1138	383	41	0	10
Oth/Unk	455	65	251	114	22	0	3
GREENE	314	67	179	56	12	0	0
White	217	48	119	40	10	0	0
Black	75	16	52	6	1	0	0
Oth/Unk	22	3	8	10	1	0	0
HAMILTON	3172	557	1831	681	84	0	19
White	1327	225	762	292	40	0	8
Black	1660	317	970	328	37	0	8
Oth/Unk	185	15	99	61	7	0	3
HANCOCK	120	23	78	19	0	0	0
White	101	19	66	16	0	0	0
Black	4	0	4	0	0	0	0
Oth/Unk	15	4	8	3	0	0	0
JEFFERSON	17	2	9	6	0	0	0
White	10	2	3	5	0	0	0
Black	7	0	6	1	0	0	0
KNOX	66	8	35	20	3	0	0
White	60	7	32	18	3	0	0
Black	3	1	1	1	0	0	0
Oth/Unk	3	0	2	1	0	0	0
LAKE	571	128	296	123	21	0	3
White	496	116	254	105	19	0	2
Black	49	8	29	11	0	0	1
Oth/Unk	26	4	13	7	2	0	0

Table 5a. Resident Induced Abortions, 2004 (Page 3)

County/Race	Total	Age Group					Unk
		10-19	20-29	30-39	40-49	50 +	
LICKING	259	51	141	57	9	0	1
White	235	45	129	52	8	0	1
Black	17	5	8	3	1	0	0
Oth/Unk	7	1	4	2	0	0	0
LORAIN	812	150	443	183	31	0	5
White	572	102	309	133	24	0	4
Black	152	32	85	29	6	0	0
Oth/Unk	88	16	49	21	1	0	1
LUCAS	1603	302	962	300	28	0	11
White	861	155	505	174	17	0	10
Black	568	112	349	97	9	0	1
Oth/Unk	174	35	108	29	2	0	0
MAHONING	759	146	445	144	18	0	6
White	431	81	242	93	12	0	3
Black	297	63	186	42	3	0	3
Oth/Unk	31	2	17	9	3	0	0
MARION	75	24	35	15	1	0	0
White	72	24	33	14	1	0	0
Oth/Unk	3	0	2	1	0	0	0
MEDINA	306	56	169	71	9	0	1
White	288	55	158	66	8	0	1
Black	8	1	6	1	0	0	0
Oth/Unk	10	0	5	4	1	0	0
MIAMI	163	33	88	37	3	0	2
White	151	30	83	33	3	0	2
Black	6	2	3	1	0	0	0
Oth/Unk	6	1	2	3	0	0	0
MONTGOMERY	1632	317	897	374	31	0	13
White	786	146	433	178	20	0	9
Black	761	159	418	170	10	0	4
Oth/Unk	85	12	46	26	1	0	0
PORTAGE	429	73	255	87	12	0	2
White	363	59	211	81	10	0	2
Black	47	11	33	3	0	0	0
Oth/Unk	19	3	11	3	2	0	0
RICHLAND	184	46	106	27	5	0	0
White	146	29	87	25	5	0	0
Black	33	16	16	1	0	0	0
Oth/Unk	5	1	3	1	0	0	0

Table 5a. Resident Induced Abortions, 2004 (Page 4)

County/Race	Total	Age Group					Unk
		10-19	20-29	30-39	40-49	50 +	
SANDUSKY	101	20	56	21	3	0	1
White	77	15	43	15	3	0	1
Black	12	3	6	3	0	0	0
Oth/Unk	12	2	7	3	0	0	0
SCIOTO	74	15	44	12	3	0	0
White	70	14	42	11	3	0	0
Black	2	0	1	1	0	0	0
Oth/Unk	2	1	1	0	0	0	0
SENECA	65	13	40	8	4	0	0
White	61	12	37	8	4	0	0
Black	2	1	1	0	0	0	0
Oth/Unk	2	0	2	0	0	0	0
STARK	795	148	441	167	28	0	11
White	635	121	340	136	28	0	10
Black	143	22	92	28	0	0	1
Oth/Unk	17	5	9	3	0	0	0
SUMMIT	1677	321	971	338	39	0	8
White	1020	191	584	210	29	0	6
Black	568	121	340	99	6	0	2
Oth/Unk	89	9	47	29	4	0	0
TRUMBULL	493	92	275	107	17	0	2
White	384	72	216	83	13	0	0
Black	103	20	56	22	3	0	2
Oth/Unk	6	0	3	2	1	0	0
WARREN	246	46	127	65	6	0	2
White	213	41	112	53	5	0	2
Black	12	3	7	1	1	0	0
Oth/Unk	21	2	8	11	0	0	0
WAYNE	128	21	69	32	4	0	2
White	120	21	62	31	4	0	2
Black	7	0	6	1	0	0	0
Oth/Unk	1	0	1	0	0	0	0
WOOD	254	54	146	45	7	0	2
White	204	38	121	38	5	0	2
Black	19	10	7	1	1	0	0
Oth/Unk	31	6	18	6	1	0	0

Counties with a minimum of 25 female residents in each age/race group were included.

TABLE 5b

RESIDENT INDUCED ABORTIONS REPORTED IN OHIO, BY SELECTED COUNTIES, RACE AND AGE, 2004

County/Race	Total	Age Group															
		<15	15	16	17	18	19	15-19	20	21	20-24	25-29	30-34	35-39	40-44	45+	Unk.
OHIO TOTAL	31391	228	407	683	872	1607	1887	5456	1990	2316	10774	7015	4465	2361	838	60	194
White	17716	85	202	393	493	940	1141	3169	1186	1404	6197	3676	2437	1469	540	38	105
Black	11581	135	184	253	337	572	639	1985	695	775	3902	2867	1674	703	226	14	75
Oth/Unk	2094	8	21	37	42	95	107	302	109	137	675	472	354	189	72	8	14
BUTLER	843	6	22	24	20	46	52	164	47	74	285	181	121	58	22	4	2
White	622	5	17	20	19	44	44	144	34	57	208	121	85	37	17	4	1
Black	132	1	3	2	0	2	3	10	8	8	42	39	27	10	2	0	1
Oth/Unk	89	0	2	2	1	0	5	10	5	9	35	21	9	11	3	0	0
CUYAHOGA	7565	65	94	156	191	332	386	1159	426	465	2472	1766	1208	595	228	17	55
White	2361	7	19	43	50	96	142	350	131	143	777	488	382	239	98	9	11
Black	4697	58	68	101	130	206	225	730	275	286	1535	1168	742	312	108	5	39
Oth/Unk	507	0	7	12	11	30	19	79	20	36	160	110	84	44	22	3	5
FRANKLIN	4678	30	46	103	97	204	298	748	274	322	1559	1168	700	321	121	7	24
White	2326	6	17	52	44	107	162	382	143	182	805	533	357	167	62	3	11
Black	1897	24	23	40	45	79	114	301	111	119	615	523	263	120	38	3	10
Oth/Unk	455	0	6	11	8	18	22	65	20	21	139	112	80	34	21	1	3
GREENE	314	2	10	5	10	16	24	65	25	34	126	53	30	26	11	1	0
White	217	1	7	4	9	13	14	47	19	22	85	34	21	19	9	1	0
Black	75	1	3	1	0	3	8	15	5	12	38	14	3	3	1	0	0
Oth/Unk	22	0	0	0	1	0	2	3	1	0	3	5	6	4	1	0	0
HAMILTON	3172	38	41	60	75	158	185	519	198	235	1080	751	449	232	79	5	19
White	1327	11	11	25	31	64	83	214	92	111	460	302	181	111	37	3	8
Black	1660	27	30	35	42	87	96	290	97	112	564	406	230	98	35	2	8
Oth/Unk	185	0	0	0	2	7	6	15	9	12	56	43	38	23	7	0	3

Table 5b. Resident Induced Abortions, 2004 (Page 2)

County/Race	Total	Age Group															
		<15	15	16	17	18	19	15-19	20	21	20-24	25-29	30-34	35-39	40-44	45+	Unk.
LORAIN	812	1	9	16	35	45	44	149	62	71	285	158	117	66	26	5	5
White	572	0	3	13	22	35	29	102	49	42	200	109	86	47	20	4	4
Black	152	0	5	2	9	5	11	32	8	16	48	37	19	10	5	1	0
Oth/Unk	88	1	1	1	4	5	4	15	5	13	37	12	12	9	1	0	1
LUCAS	1603	16	26	31	51	81	97	286	118	133	604	358	204	96	28	0	11
White	861	8	12	16	24	40	55	147	63	68	309	196	113	61	17	0	10
Black	568	4	11	12	22	34	29	108	39	55	224	125	69	28	9	0	1
Oth/Unk	174	4	3	3	5	7	13	31	16	10	71	37	22	7	2	0	0
MONTGOMERY	1632	11	26	38	51	98	93	306	93	109	544	353	255	119	29	2	13
White	786	6	4	20	20	43	53	140	39	57	265	168	120	58	19	1	9
Black	761	5	22	15	30	51	36	154	48	46	253	165	120	50	9	1	4
Oth/Unk	85	0	0	3	1	4	4	12	6	6	26	20	15	11	1	0	0
SUMMIT	1677	8	13	34	46	99	121	313	109	127	607	364	212	126	37	2	8
White	1020	2	6	20	26	66	71	189	74	79	384	200	131	79	27	2	6
Black	568	6	7	14	19	30	45	115	33	42	195	145	69	30	6	0	2
Oth/Unk	89	0	0	0	1	3	5	9	2	6	28	19	12	17	4	0	0

Counties with a minimum of 25 female residents in each age/race group were included.

TABLE 6

INDUCED ABORTIONS REPORTED IN OHIO, BY COUNTY OF OCCURRENCE, 1995 - 2004

County of Occurrence	2004	2003	2002	2001	2000	1999	1998	1997	1996	1995
Total Abortions Reported	34242	35319	35830	37464	38140	37041	37479	38242	36530	36950
Cuyahoga County	10989	11486	11801	12534	12706	12607	12649	12032	11360	11315
Erie County	0	0	0	0	0	0	0	0	1	0
Franklin County	6856	6869	6253	6556	6760	5979	6333	6614	4900	4895
Greene County	270	0	0	0	0	0	0	1	0	0
Hamilton County	6431	6392	6961	7216	6955	6916	6817	6962	6624	7098
Licking County	0	1	0	0	0	0	0	0	1	0
Lucas County	2425	2383	2366	2445	2665	2846	2856	3112	3258	3070
Mahoning County	912	955	1049	1132	1223	1096	1093	1245	1268	1285
Miami County	0	0	0	0	0	0	2	1	0	0
Montgomery County	2688	2976	3011	3398	3874	3921	4202	4369	4955	4894
Stark County	0	0	0	0	1	0	0	1	1	4
Summit County	3671	4257	4389	4183	3956	3675	3527	3878	4159	4328
Trumbull County	0	0	0	0	0	1	0	0	0	0
Ohio County Unknown	0	0	0	0	0	0	0	27	3	61

TABLE 7

INDUCED ABORTIONS REPORTED IN OHIO, BY METHOD OF TERMINATION AND COUNTY OF OCCURRENCE, 2004

County of Occurrence	Method of Termination											
	TOTAL	Curretage		D & Ext	D & Evac	Saline Instill	Prostag Instill	Hyster- otomy	Hyster- ectomy	Other	Non Surgical	Not Reported
		Suction	Sharp									
OHIO TOTAL	34242	26046	114	309	2557	65	193	5	3	575	4542	179
Cuyahoga	10989	8364	103	18	1206	23	35	3	1	561	855	61
Franklin	6856	5635	7	38	238	21	101	0	1	7	806	38
Greene	270	1	0	0	0	3	0	0	0	0	267	0
Hamilton	6431	5671	2	169	301	3	30	1	0	3	250	23
Lucas	2425	1629	0	23	277	1	4	0	0	0	488	5
Mahoning	912	817	0	0	0	1	1	0	0	2	90	2
Montgomery	2688	2276	2	14	310	4	14	0	1	1	52	24
Summit	3671	1653	0	47	225	9	8	1	0	1	1734	26

TABLE 8

TOTAL INDUCED ABORTIONS REPORTED IN OHIO, BY
GESTATIONAL AGE, 2004

Gestational Age	Number	Percent
Total Abortions Reported	34242	100.0
Less than 9 Weeks	19782	57.8
9 - 12 Weeks	9489	29.9
13 - 19 Weeks	3944	11.7
20 Weeks	196	0.8
21 - 24	524	1.9
25 - 36 Weeks	11	0.0
Unknown	145	0.1

TABLE 9

RESIDENT INDUCED ABORTIONS IN OHIO, BY AGE OF WOMEN OBTAINING ABORTION
AND BY NUMBER OF PRIOR INDUCED ABORTIONS, 2004

Age Group	Total	Prior Induced Abortion						
		0	1	2	3	4	5+	Unk
Total Abortions	31391	11737	8271	3337	1279	487	372	5908
Under 15	228	123	13	2	0	0	0	90
15-19	5456	3055	715	113	18	4	5	1546
20-24	10774	4217	2946	973	295	92	62	2189
25-29	7015	2069	2148	1067	442	175	104	1010
30-34	4465	1208	1393	722	315	136	122	569
35-39	2361	693	740	341	141	64	60	322
40-44	838	283	249	99	55	13	16	123
45-59	60	27	13	5	5	1	0	9
Unknown	194	62	54	15	8	2	3	50

TABLE 10a

TOTAL INDUCED ABORTIONS IN OHIO WITH POST-ABORTION COMPLICATIONS, BY
TYPE OF COMPLICATION, 2004

(DATA SOURCE IS 'POST-ABORTION CARE REPORT FOR COMPLICATIONS')

Complication Type	Number of Complications	Percent of Abortions with Complications
Perforation of Uterus	0	0.00%
Cervical Laceration	1	0.00%
Hemorrhage	6	0.02%
Incomplete Abortion	17	0.05%
Hematometra	11	0.03%
Anesthetic	1	0.00%
Failed Abortion	3	0.01%
Infection	13	0.04%
Death	0	0.00%
Other	1	0.00%
Total Number of Complications*	53	Not Applicable
Total Abortions with One or More Complications	43	0.13%

TABLE 10b

TOTAL INDUCED ABORTIONS IN OHIO WITH POST-ABORTION COMPLICATIONS, BY
TYPE OF COMPLICATION, 2004

(DATA SOURCE IS 'CONFIDENTIAL ABORTION REPORT')

Complication Type	Number of Complications	Percent of Abortions with Complications
Perforation of Uterus	2	0.01%
Cervical Laceration	25	0.07%
Hemorrhage	14	0.04%
Incomplete Abortion	8	0.02%
Hematometra	1	0.00%
Anesthetic	2	0.01%
Failed Abortion	4	0.01%
Infection	0	0.00%
Death	0	0.00%
Other	10	0.03%
Total Number of Complications*	64	Not Applicable
Total Abortions with One or More Complications	65	0.19%

* Note: An abortion may have more than one reported complication. Complications reported in this table may or may not also be reported in Table 10a.

TABLE 11

TOTAL INDUCED ABORTIONS IN OHIO WITH POST-ABORTION COMPLICATIONS, BY
TYPE OF COMPLICATION AND GESTATION PERIOD, 2004

(DATA SOURCE IS POST-ABORTION CARE REPORT FOR COMPLICATIONS')

Complication Type	Gestation Period				Unk
	< 9 Wks	9-12 Wks	13-19 Wks	20+ Wks	
	(Number of Complications)				
Perforation of Uterus	0	0	0	0	0
Cervical Laceration	0	0	0	0	1
Hemorrhage	3	1	1	1	0
Incomplete Abortion	7	5	4	1	0
Hematometra	3	8	0	0	0
Anesthetic	0	0	1	0	0
Failed Abortion	3	0	0	0	0
Infection	5	6	2	0	0
Death	0	0	0	0	0
Other/Unreported	1	0	0	0	0
Total Number of Complications*	22	20	8	2	1
Total Abortions with One or More Complications	20	15	5	2	1

NOTE: An abortion may have more than one reported complication. Complications reported in this table may or may not also be reported in Table 10b.

TABLE 12

TOTAL INDUCED ABORTIONS IN OHIO WITH POST-ABORTION COMPLICATIONS, BY TYPE OF COMPLICATION
AND TERMINATION METHOD, 2004

(DATA SOURCE IS 'CONFIDENTIAL ABORTION REPORTS')

Method of Termination	Complication Type									Total Complications	Abortions w/ One or More Complications
	Hemorrhage	Perforation of Uterus	Cervical Laceration	Infection	Anesthetic	Failed Abortion	Incomplete Abortion	Hematometra	Other		
A. Suction Curettage	7	2	17	0	1	2	6	1	0	36	35
B. Sharp Curettage	0	0	0	0	0	0	0	0	0	0	0
C. Dilation & Extraction	0	0	0	0	0	0	0	0	1	1	1
D. Dilation & Evacuation	2	0	4	0	1	0	0	0	2	9	9
E. Saline/Urea Instillation	0	0	0	0	0	0	0	0	0	0	0
F. Prostaglandin Instill.	0	0	0	0	0	0	0	0	1	1	1
G. Hysterotomy	1	0	0	0	0	0	0	0	0	1	1
H. Hysterectomy	0	0	0	0	0	0	0	0	0	0	0
I. Other/Unknown	0	0	1	0	0	0	0	0	1	2	2
J. Medical/Nonsurgical	0	0	1	0	0	2	3	0	5	11	11

Source: Confidential Abortion Reports. Numbers are comparable to Table 10b, but not Tables 10a and 11 because those tables are based on Post-Abortion Care Reports for Complications. Complication from the two data sources cannot be summed.