

# OHIO

## 2007



## Induced Abortions in Ohio

Ohio Department of Health

Ted Strickland, Governor

Alvin D. Jackson, M.D., Director of Health

An equal opportunity employer/provider

# **Induced Abortions in Ohio, 2007**

**Prepared by:**

**Center for Public Health Statistics and Informatics  
Office of Performance Improvement**

**John Paulson  
Supervisor**

**Donna L. Smith  
Researcher**

**October, 2008**

**Induced Abortion Program contact Persons**

**Center for Public Health Statistics and Informatics**

**Data Analysis**

**John Paulson**

**614-644-8507**

**Donna L. Smith**

**614-466-7545**

**Quality Assurance**

**Fetal Development**

**Resources Directory on request**

**Hanh Le**

**614-644-7726**

**Office of General Counsel**

**Legislation**

**Rachel Belenker**

**614-466-4882**

## TABLE OF CONTENTS

	Induced Abortion Summary	1
<b>Figure 1</b>	Resident Induced Abortions Ohio, 1976-2007	3
<b>Figure 2</b>	Selected characteristics of resident induced abortions in Ohio, 2007	5
<b>Figure 3</b>	Induced abortions reported in Ohio, by county of occurrence, 2007	7
<b>Figure 4</b>	Abortion ratio and abortion rate, by year, Ohio residents 1990-2007	9
<b>Figure 5</b>	Induced abortion rates per 1,000 women by age, Ohio residents, 2001-2007	11
<b>Figure 6</b>	Induced abortion ratio, by age group, Ohio residents, 2001 - 2007	13
<b>Figure 7</b>	Total Induced abortions by weeks of gestation, by year, 1990-2007	15
<b>Table 1</b>	Induced Abortion Summary Tables, Ohio, 2007	17
<b>Table 2</b>	Selected characteristics of induced abortions reported in Ohio, 1995-2007	18
<b>Table 3</b>	Resident induced abortions reported in Ohio, by county of residence, 1995-2007	20
<b>Table 4</b>	Resident induced abortions reported in Ohio, by county of residence and age, 2007	22
<b>Table 5a</b>	Resident induced abortions reported in Ohio, by selected counties, race, and broad age groups, 2007	24
<b>Table 5b</b>	Resident induced abortions reported in Ohio, by selected counties, race and age, 2007	28
<b>Table 6</b>	Induced abortions reported in Ohio, by county of occurrence, 1995-2007	30
<b>Table 7</b>	Induced abortions reported in Ohio, by method of termination	

	and county of occurrence, 2007	31
<b>Table 8</b>	Total induced abortions reported in Ohio, by gestational age, 2007	32
<b>Table 9</b>	Resident induced abortions reported in Ohio, by age of women obtaining abortion and by number of prior induced abortions, 2007	33
<b>Table 10a</b>	Total induced abortions in Ohio with post abortion complications, by type of complication, 2007 (Data Source is ‘Post-Abortion Care Report for Complications’)	34
<b>Table 10b</b>	Total induced abortions in Ohio with post abortion complications, by type of complication, 2007 (Data Source is ‘Confidential Abortion Report’)	35
<b>Table 11</b>	Total induced abortions in Ohio with post abortion complications, by type of complication and gestation period, 2007 (Data Source is ‘Post Abortion Care Report for Complications’)	36
<b>Table 12</b>	Total induced abortions in Ohio with post abortion complications, by type of complication and termination method, 2007 (Data source is “Confidential Abortion Report”)	37
<b>Table 13</b>	Resident Induced Abortions by Zip Code of Patient, Ohio, 2007	38
<b>Appendix I</b>	Confidential Abortion Report form	43
<b>Appendix II</b>	Post-Abortion Care Report for Complications form	45

## Induced Abortion Summary

### Background

Induced abortions must be reported to the Ohio Department of Health by the physician who performed the abortion, using the form “Confidential Abortion Reports.” The report includes demographic and medical history information about the woman obtaining the abortion and information about the medical procedure. These reports are used to produce statistical reports about abortions occurring in Ohio. The forms are confidential: no identifying information about women who obtain abortions is collected except the medical record number. Physicians providing post abortion care for complications are required to file a “Post Abortion Care Report for Complications.” It is not possible to link these post-abortion reports to the “Confidential Abortion Reports.” Both types of reports contain information about complications and are used to create statistical reports about post-abortion complications. This report presents information derived from both “Confidential Abortion Reports” and “Post-Abortion Care Reports for Complications” for 2007 in Ohio (reporting forms are included as Appendices I and II).

### Characteristics of Induced Abortions Reported in Ohio, 2007

Induced abortion statistics are available for Ohio dating back to 1976. In 1994 the reporting form was improved. Many trend comparisons in this summary date back to 1996. We also compare the 2006 abortions to 2007 occurrences to show more recent trend developments.

A total of 30,859 induced pregnancy terminations were reported in Ohio for 2007, including 28,921 for Ohio residents (93.7%). The number of total abortions performed in Ohio has seen a decline annually since 2000. (Figure 1)

Approximately one eighth of women who obtained abortions were under 20 years of age, with another third between the ages of 20-24 years of age (figure 2). The age distribution of women obtaining abortions has remained fairly unchanged since 1994. Approximately 81% of women who obtained an abortion were unmarried. The marital status distribution has remained constant since 1994. Fifty-four percent of resident women who obtained abortions were White, 37% were African American, and 9% were other races or unknown. Three and one half percent of abortions were obtained by women of Hispanic origin.

The 2007 Ohio abortion rate was 12.5 per 1,000 women ages 15-44 years (figure 4). The most recent comparable rate for the US was higher at 16 per 1,000 women (year 2004). The 2007 Ohio abortion ratio was 192 abortions per 1,000 live births, a ratio that is also lower than the 2004 US abortion ratio of 241 abortions per 1,000 live births.

In 2007, approximately 45% of women obtaining abortions in Ohio reported no prior pregnancies. Over half of all induced abortions involved pregnancies of less than 9 weeks (55%), with approximately 28% involving pregnancies of 9-12 weeks (figure 2). The proportion involving abortions of less than 9 weeks increased from 42% in 1995, while the proportion between 9 and 12 weeks declined from 40% to 28% (figure 7). There were 690 abortions involving pregnancies of 20 or more weeks, a number that decreased from 712 in 1995. All reported abortions were obtained in eight major metropolitan areas of Ohio. 30,789 abortions were provided in licensed ambulatory surgical facilities, and 70 were provided in hospitals (less than 1%).

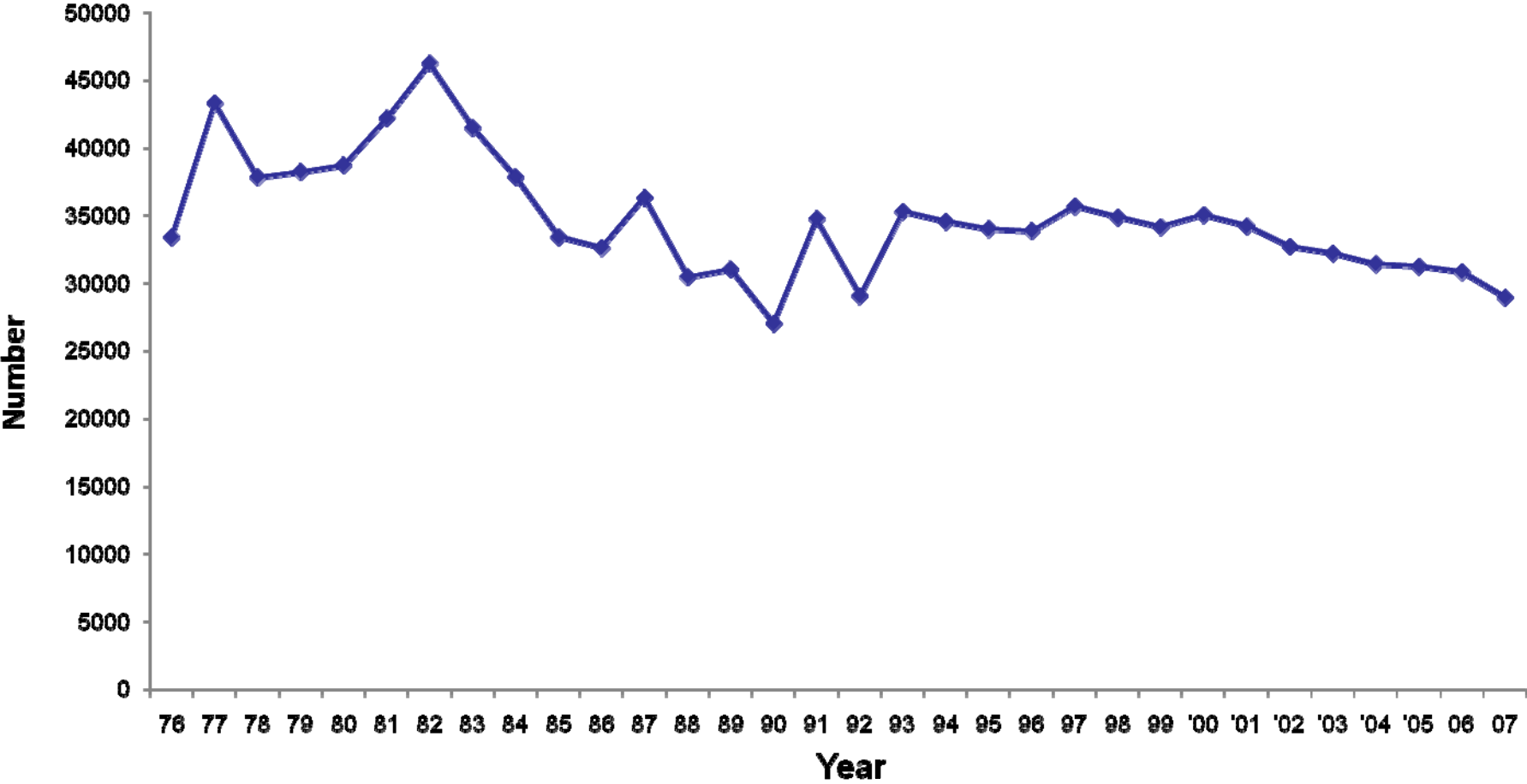
There were changes between 2002 and 2007 in method of termination for induced abortions performed in Ohio. Suction curettage remained the most frequent method of termination at 78% in 2007. That method has decreased since 2000, when 92% of terminations were by suction curettage. Medical/non-surgical procedures are the second most common method (15%). Dilation and evacuation was the third most common method (9%).

Specific details about medical/non-surgical procedures have not been keyed from Ohio abortion reports, which makes it difficult to tabulate the specific procedures used in Ohio. We did, however, examine a sample of these reports in 2005 and the majority of these medical/surgical procedures were methotrexate and misoprostol administration. The medical procedures used most commonly in early abortions nationally are methotrexate with misoprostol and mifepristone with misoprostol (Goldberg AM, Greenberg MB, Darney PD. Drug therapy: miosprostol and pregnancy. N Engl J Med 2001;344:38-47). The FDA approved mifepristone for medical abortions in 2000. That approval was expected to shift many of the early abortions from surgical to non-surgical methods.

Reported post-abortion complications were rare, averaging approximately 2 per 1,000 procedures. Forty-five complications were reported on the "Confidential Abortion Reports". The most common types of abortion complications were infection and cervical laceration.

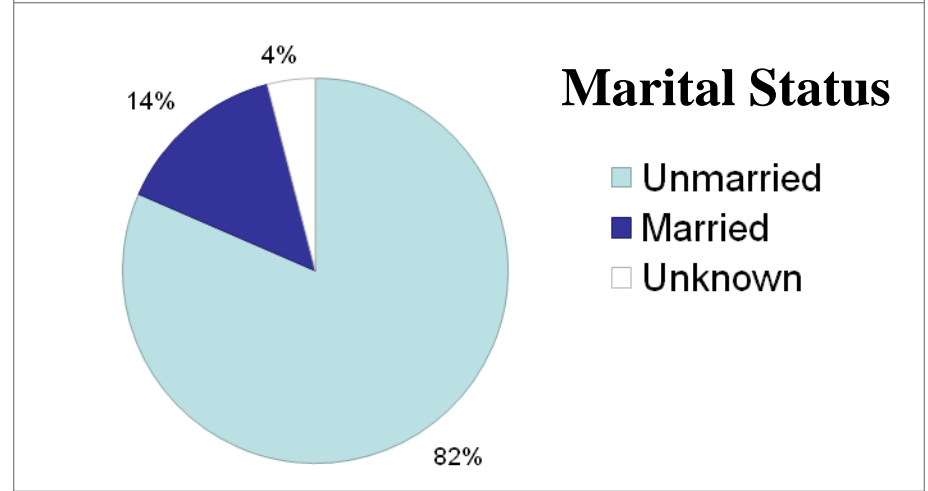
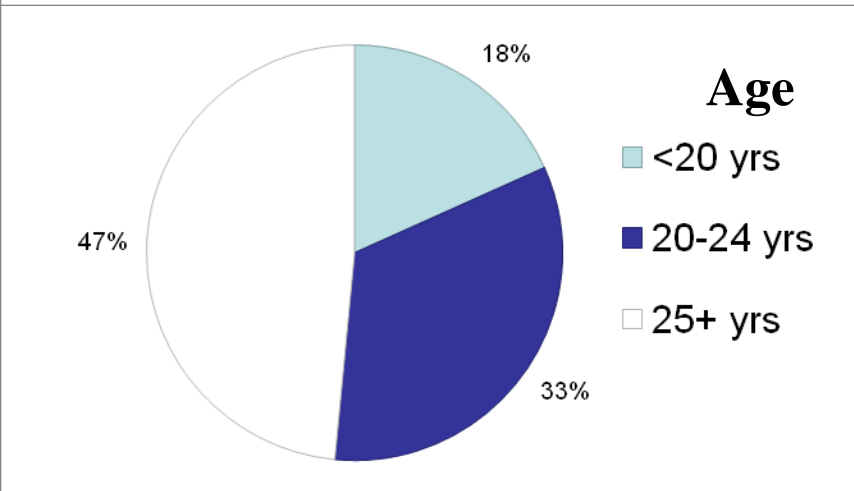
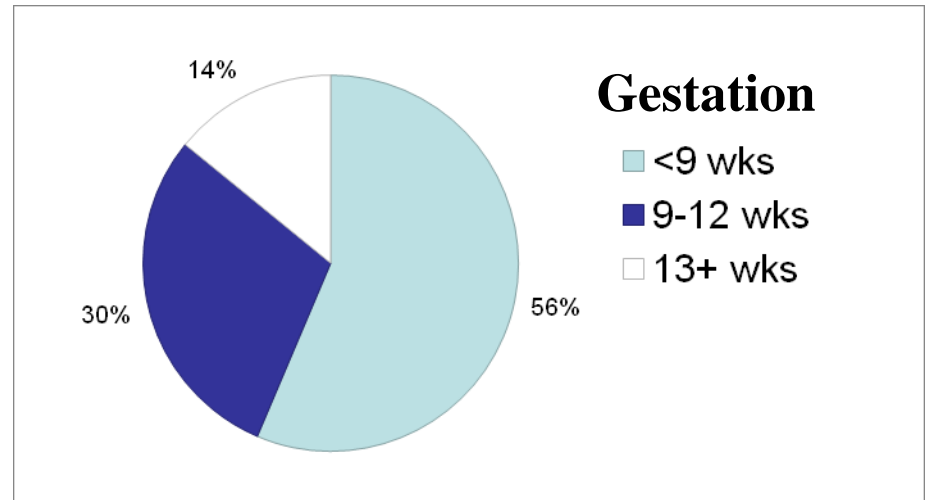
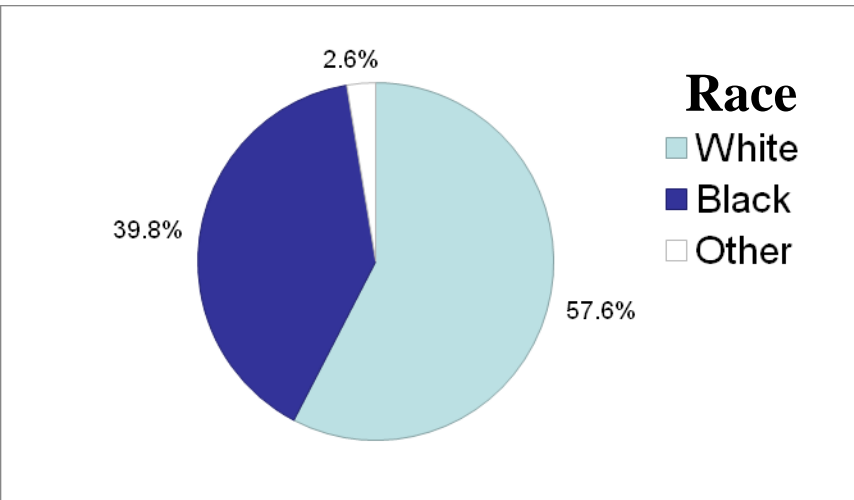
County of residence for women obtaining abortions is reported in tables 3, 4, 5a, and 5b. In accordance with Ohio Department of Health disclosure limitation policies, some counties were removed from tables 5a and 5b. The removed counties had fewer than 25 female residents in the reported age/race categories.

**Figure 1. Resident induced abortions, Ohio, 1976 - 2007**



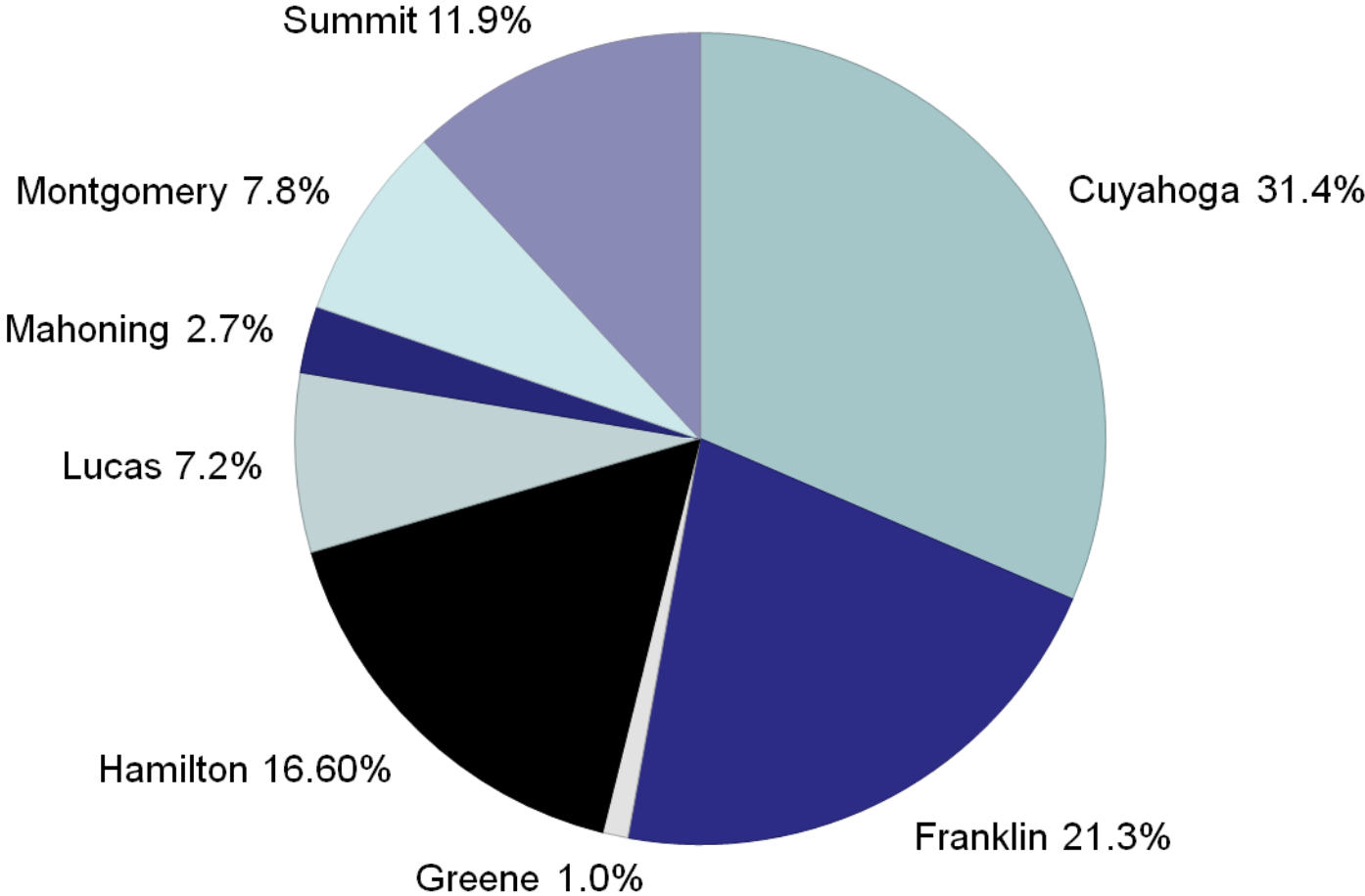


# Figure 2. Selected characteristics of resident induced abortions in Ohio, 2007

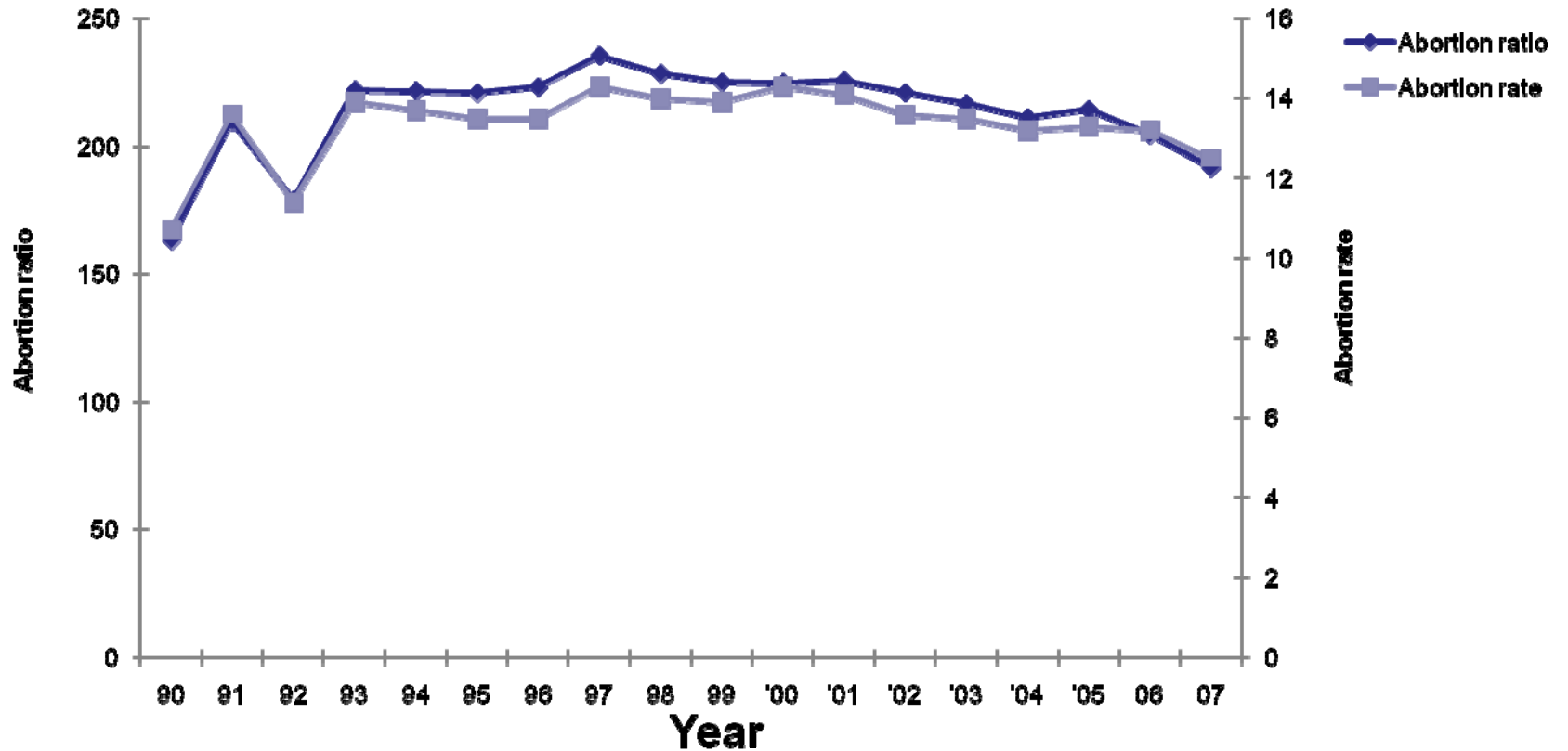


Excludes Unknown unless otherwise stated

**Figure 3. Induced abortions reported in Ohio, by county of occurrence, 2007**

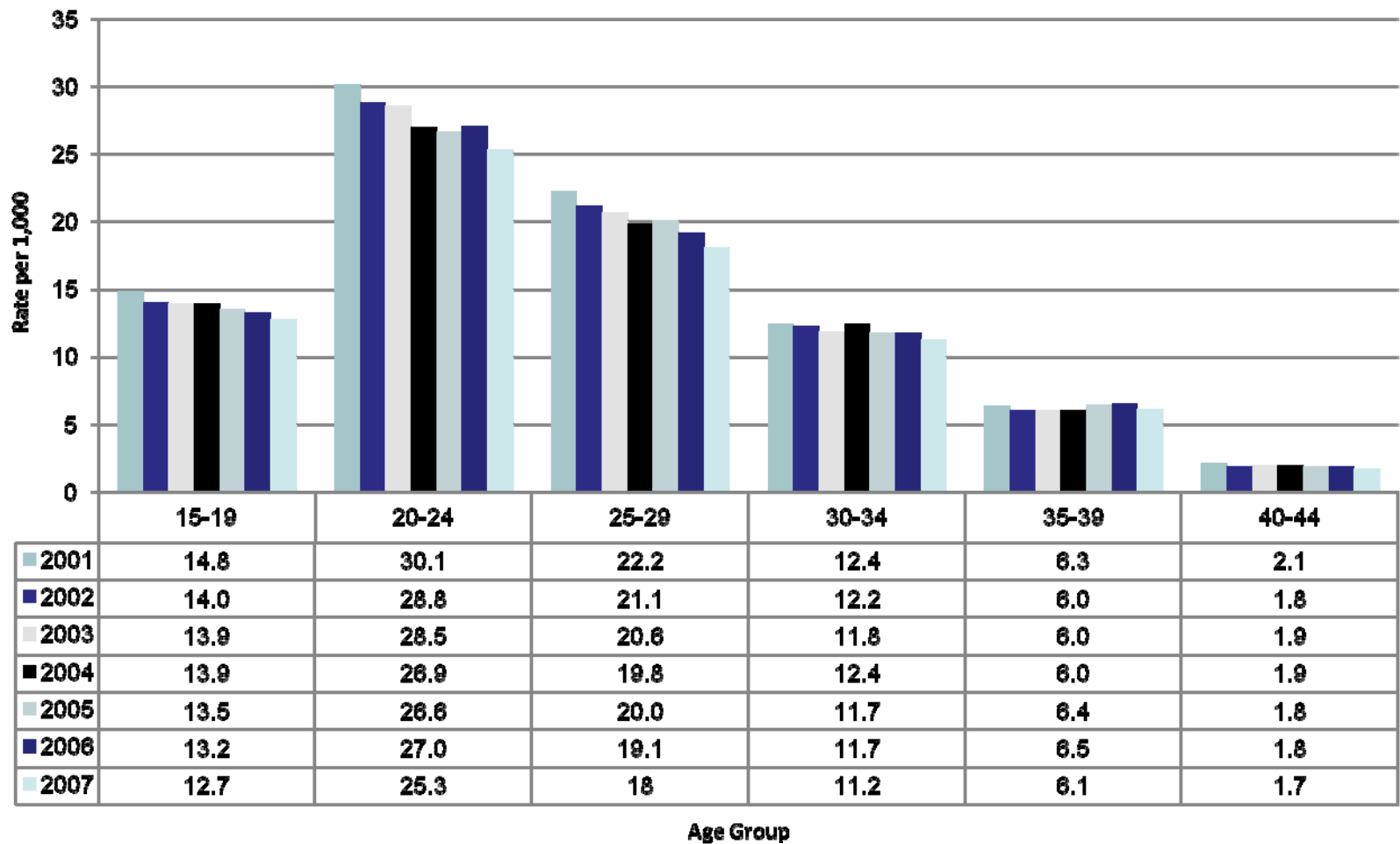


# Figure 4. Abortion ratio and abortion rate, by year, Ohio residents, 1990 - 2007



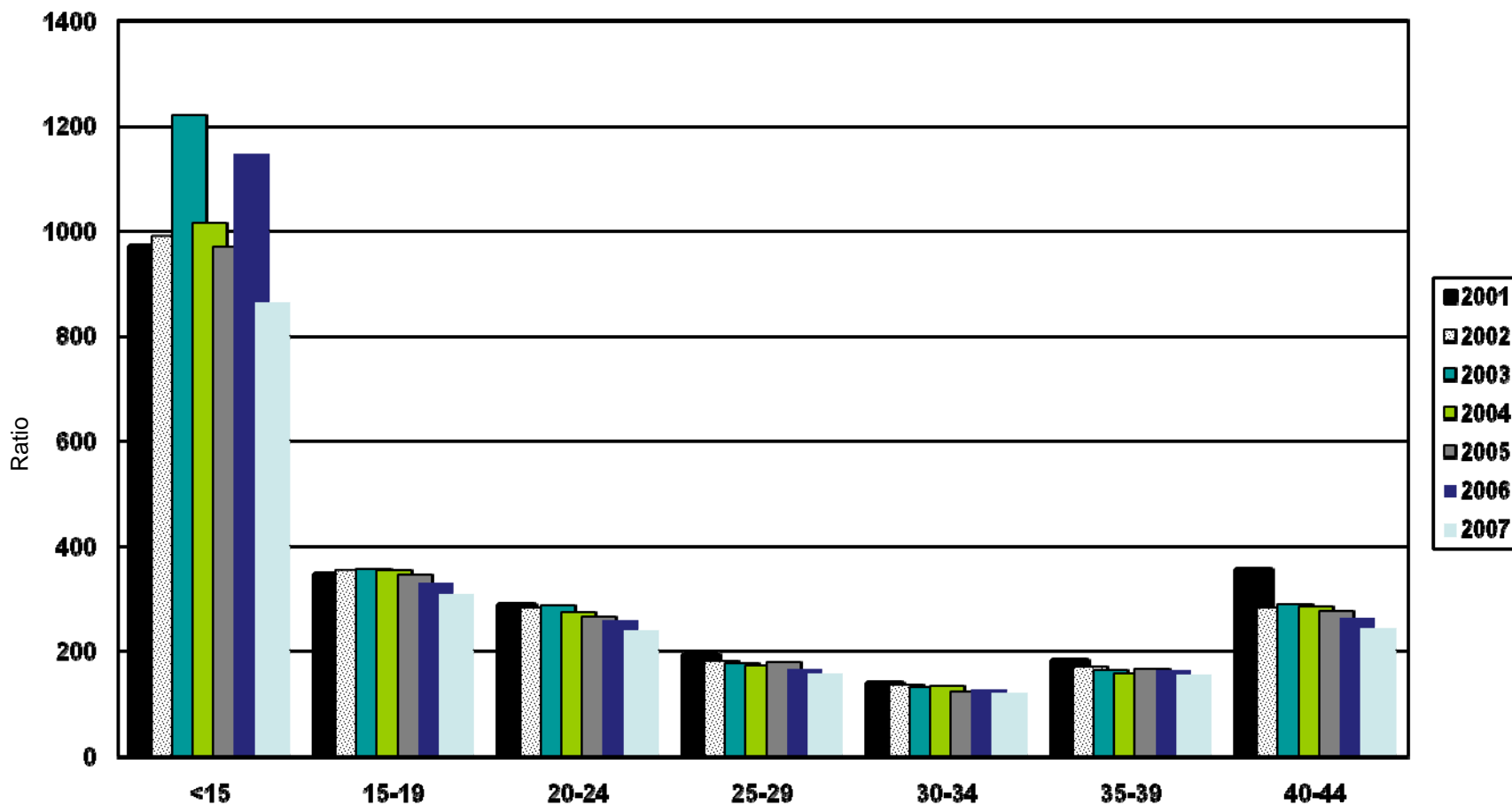
Abortion ratio is number of abortions per 1,000 live births.  
Abortion rate is number of abortions per 1,000 women ages 15-44.

# Figure 5. Induced abortion rates per 1,000 women by age, Ohio residents, 2001 - 2007



Abortion rate is number of abortions per 1,000 female population in specified age group.

# Figure 6. Induced abortion ratio, by age group, Ohio residents, 2001 - 2007



Abortion ratio is number of abortions per 1,000 live births in specified age group

# Figure 7. Total Induced abortions by weeks of gestation, by year, 1990-2007

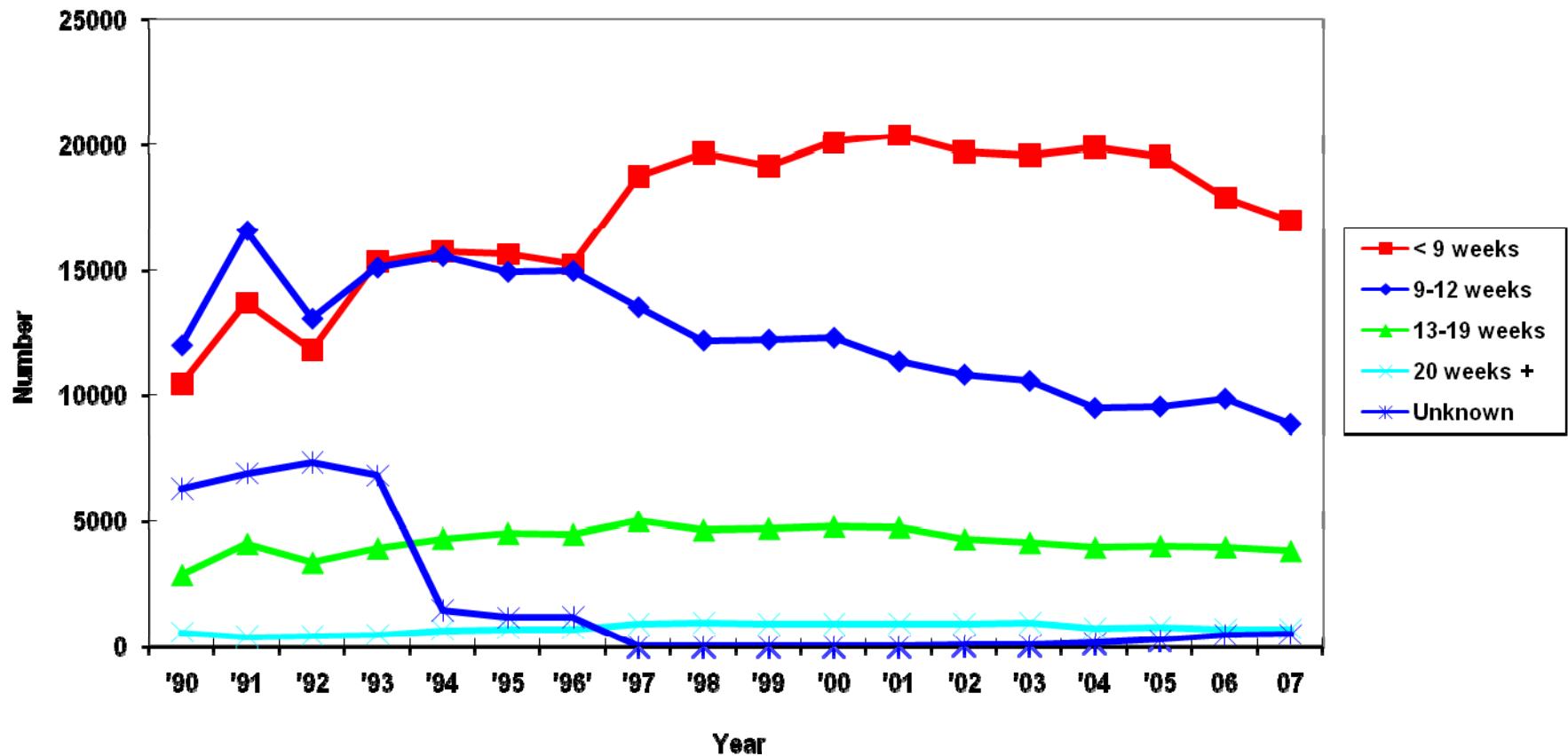


TABLE 1

## INDUCED ABORTION SUMMARY TABLE, OHIO, 2007

CHARACTERISTICS	NUMBER	PERCENT
TOTAL INDUCED ABORTIONS	30859	100.0
RESIDENCE:		
Ohio Resident	28921	93.7
Out-of-State Resident	1938	6.3
AGE:		
Under 20 Years	5583	18.1
20-24 Years	10182	33.0
25 Years and Over	14779	47.9
Age Not Reported	315	1.0
RACE GROUP:		
White	17221	55.8
Black	11073	35.9
American Indian	57	0.2
Asian/Pacific Islander	693	2.2
Other/Unknown	1815	5.9
HISPANIC:		
Non-Hispanic	29290	94.9
Hispanic	1085	3.5
Unknown	484	1.6
LEVEL OF EDUCATION:		
Less than Grade 9	579	1.9
Grade 9-12	18880	61.2
1-2 Yrs College	5481	17.8
3-4 Yrs College	4374	14.2
5+ Yrs College	864	2.8
Unknown	681	2.2
MARITAL STATUS:		
Married <u>1/</u>	4502	14.6
Unmarried <u>2/</u>	25071	81.2
Not Reported	1286	4.2
NUMBER OF LIVING CHILDREN:		
None	10974	35.6
One	8499	27.5
Two or More	10233	33.2
Not Reported	1153	3.7
WEEKS OF GESTATION:		
Less than 9 Weeks	17023	55.2
9-12 Weeks	8855	28.7
13 Weeks and Over	4501	14.6
Not Reported	480	1.6

1/ Includes Separated2/ Includes Never Married, Divorced, Widowed

TABLE 2

## SELECTED CHARACTERISTICS OF INDUCED ABORTIONS REPORTED IN OHIO, 1996-2007

Characteristic	2007	2006	2005	2004	2003	2002	2001	2000	1999	1998	1997	1996
<u>NUMBER OF ABORTIONS</u>												
TOTAL INDUCED ABORTIONS	30859	32936	34128	34242	35319	35830	37464	38140	37041	37479	38242	36530
RESIDENCE:												
Ohio Resident	28921	30809	31210	31391	32180	32687	34174	35022	34134	34829	35650	33836
Out-of-State Resident	1938	2127	2918	2851	3139	3143	3290	3118	2907	2606	2509	2635
Unknown	0	0	0	0	0	0	0	0	0	44	83	59
AGE:												
Under 15 Years	207	292	240	253	292	277	286	314	279	334	354	200
15-19 Years	5376	5603	5817	5911	6014	6098	6485	6860	6997	7395	7795	6382
20-24 Years	10182	11123	11502	11772	12441	12370	12710	13029	12391	12447	12682	12200
25-29 Years	7355	7720	7968	7655	7836	7984	8531	8885	8774	8973	8951	8733
30-34 Years	4081	4333	4687	4875	4980	5205	5299	5073	4797	4528	4689	4695
35-39 Years	2535	2741	2708	2589	2660	2775	2956	2957	2857	2859	2859	3055
40-44 Years	755	845	874	910	938	906	1064	948	883	876	833	954
45 Years & Older	53	53	73	68	55	61	114	53	37	42	35	66
Unknown	315	226	259	209	103	154	19	21	26	25	44	245
EDUCATION:												
Less than Grade 9	579	662	653	675	756	755	797	612	493	632	644	584
Grade 9-12	18880	20515	20911	21222	22359	22742	23834	24281	23287	23911	24547	20651
1 Or More College Years	10719	11064	11810	11763	11924	11893	12593	12823	11919	11860	12495	12888
None/Not Reported	681	695	754	582	280	440	240	424	1342	1076	556	2407
RACE:												
White	17221	18724	19673	19952	20717	20934	22045	22581	22143	22366	22894	22438
Black	11073	11683	12070	12028	12463	12689	13160	13480	12680	12155	12377	11563
Asian/Pacific Islander	693	695	723	731	731	740	775	782	720	661	718	519
Other/Unknown/Not Reported	1872	1834	1662	1531	1418	1467	1484	1297	1498	2297	2253	2010
MARITAL STATUS:												
Never Married	23157	24571	25595	25489	26263	26140	27276	27460	25944	25997	26720	25292
Married	3621	3936	4199	4366	4737	4720	5058	5245	4928	4904	5082	4974
Separated	881	990	1080	1146	1148	1215	1381	1374	1334	1317	1331	1379
Divorced	1826	2174	2296	2462	2663	2892	3104	3300	3350	3502	3624	3777
Widowed	88	72	72	88	89	100	110	126	101	114	116	135
Unknown	1286	1193	886	691	419	763	535	635	1384	1645	1369	973
NUMBER OF LIVING CHILDREN:												
No Children	10974	11488	9415	9007	9913	10154	10866	11103	11480	11861	13884	12298
One Child	8499	9040	9505	9535	9805	9970	10719	11006	10650	10726	10774	10064
Two or more Children	10233	10899	11263	11515	11800	12179	12638	12679	12030	11546	11417	10451
Unknown	1153	1519	3945	4185	3801	3527	3241	3352	2881	3346	2167	3717
WEEKS OF GESTATION:												
Less than 9 Weeks	17023	17955	19549	19933	19610	19755	20432	20161	19212	19708	18784	15236
9 - 12 Weeks	8855	9862	9547	9489	10570	10820	11350	12293	12221	12183	13516	14965
13 - 19 Weeks	3811	3963	4006	3944	4133	4271	4738	4772	4695	4631	5004	4453
20 Weeks and Over	690	694	793	731	961	929	921	906	912	944	915	691
Unknown	480	462	253	145	45	55	23	8	1	13	23	1185



Table 2. Induced Abortions, 1996-2007 (page 2)

Characteristic	2007	2006	2005	2004	2003	2002	2001	2000	1999	1998	1997	1996
<u>PERCENTAGE DISTRIBUTION</u>												
TOTAL INDUCED ABORTIONS	100.0	100.0	100.0	100.0	100.0	100.0	100.0	100.0	100.0	100.0	100.0	100.0
RESIDENCE:												
Ohio Resident	93.7	93.5	91.4	91.7	91.1	91.2	91.2	91.8	92.2	92.9	93.2	92.6
Out-of-State Resident	6.3	6.5	8.6	8.3	8.9	8.8	8.8	8.2	7.8	7.0	6.6	7.2
Unknown	0.0	0.0	0.0	0.0	0.0	0.0	0.0	0.0	0.0	0.1	0.2	0.2
AGE:												
Under 15 Years	0.7	0.9	0.7	0.7	0.8	0.8	0.8	0.8	0.8	0.9	0.9	0.5
15-19 Years	17.4	17.0	17.0	17.3	17.0	17.0	17.3	18.0	18.9	19.7	20.4	17.5
20-24 Years	33.0	33.8	33.7	34.4	35.2	34.5	33.9	34.2	33.5	33.2	33.2	33.4
25-29 Years	23.8	23.4	23.3	22.4	22.2	22.3	22.8	23.3	23.7	23.9	23.4	23.9
30-34 Years	13.2	13.2	13.7	14.2	14.1	14.5	14.1	13.3	13.0	12.1	12.3	12.9
35-39 Years	8.2	8.3	7.9	7.6	7.5	7.7	7.9	7.8	7.7	7.6	7.5	8.4
40-44 Years	2.4	2.6	2.6	2.7	2.7	2.5	2.8	2.5	2.4	2.3	2.2	2.6
45 Years & Older	0.2	0.2	0.2	0.2	0.2	0.2	0.3	0.1	0.1	0.1	0.1	0.2
Unknown	1.0	0.7	0.8	0.6	0.3	0.4	0.1	0.1	0.1	0.1	0.1	0.7
EDUCATION:												
Less than Grade 9	1.9	2.0	1.9	2.0	2.1	2.1	2.1	1.6	1.3	1.7	1.7	1.6
Grade 9-12	61.2	62.3	61.3	62.0	63.3	63.5	63.6	63.7	62.9	63.8	64.2	56.5
1 Or More College Years	34.7	33.6	34.6	34.4	33.8	33.2	33.6	33.6	32.2	31.6	32.7	35.3
None/Not Reported	2.2	2.1	2.2	1.7	0.8	1.2	0.6	1.1	3.6	2.9	1.5	6.6
RACE:												
White	55.8	56.8	57.6	58.3	58.7	58.4	58.8	59.2	59.8	59.7	59.9	61.4
Black	35.9	35.5	35.4	35.1	35.3	35.4	35.1	35.3	34.2	32.4	32.4	31.7
Asian/Pacific Islander	2.2	2.1	2.1	2.1	2.1	2.1	2.1	2.1	1.9	1.8	1.9	1.4
Other/Unknown/Not Reported	6.1	5.6	4.9	4.5	4.0	4.1	4.0	3.4	4.0	6.1	5.9	5.5
MARITAL STATUS:												
Never Married	75.0	74.6	75.0	74.4	74.4	73.0	72.8	72.0	70.0	69.4	69.9	69.2
Married	11.7	12.0	12.3	12.8	13.4	13.2	13.5	13.8	13.3	13.1	13.3	13.6
Separated	2.9	3.0	3.2	3.3	3.3	3.4	3.7	3.6	3.6	3.5	3.5	3.8
Divorced	5.9	6.6	6.7	7.2	7.5	8.1	8.3	8.7	9.0	9.3	9.5	10.3
Widowed	0.3	0.2	0.2	0.3	0.3	0.3	0.3	0.3	0.3	0.3	0.3	0.4
Unknown	4.2	3.6	2.6	2.0	1.2	2.1	1.4	1.7	3.7	4.4	3.6	2.7
NUMBER OF LIVING CHILDREN:												
No Children	35.6	34.9	27.6	26.3	28.1	28.3	29.0	29.1	31.0	31.6	36.3	33.7
One Child	27.5	27.4	27.9	27.8	27.8	27.8	28.6	28.9	28.8	28.6	28.2	27.5
Two or more Children	33.2	33.1	33.0	33.6	33.4	34.0	33.7	33.2	32.5	30.8	29.9	28.6
Unknown	3.7	4.6	11.6	12.2	10.8	9.8	8.7	8.8	7.8	8.9	5.7	10.2
WEEKS OF GESTATION:												
Less than 9 Weeks	55.2	54.5	57.3	58.2	55.5	55.1	54.5	52.9	51.9	52.6	49.1	41.7
9 - 12 Weeks	28.7	29.9	28.0	27.7	29.9	30.2	30.3	32.2	33.0	32.5	35.3	41.0
13 - 19 Weeks	12.3	12.0	11.7	11.5	11.7	11.9	12.6	12.5	12.7	12.4	13.1	12.2
20 Weeks and Over	2.2	2.1	2.3	2.1	2.7	2.6	2.5	2.4	2.5	2.5	2.4	1.9
Unknown	1.6	1.4	0.7	0.4	0.1	0.2	0.1	0.0	0.0	0.0	0.1	3.2

TABLE 3

## RESIDENT INDUCED ABORTIONS REPORTED IN OHIO, BY COUNTY OF RESIDENCE, 1996-2007

Residence	2007	2006	2005	2004	2003	2002	2001	2000	1999	1998	1997	1996
OHIO	28921	30809	31210	31391	32180	32687	34174	35022	34134	34829	35650	33813
Adams	14	28	22	15	18	15	16	22	24	28	36	36
Allen	121	153	206	190	159	166	153	165	176	184	207	202
Ashland	52	48	61	57	64	47	67	69	74	70	57	55
Ashtabula	185	208	187	216	214	228	228	222	195	233	264	384
Athens	112	100	111	123	121	119	113	131	163	149	196	135
Auglaize	32	42	34	37	47	39	47	54	51	52	61	51
Belmont	27	28	40	29	30	24	25	41	26	38	39	22
Brown	48	41	55	44	46	67	63	71	75	71	71	55
Butler	720	775	816	843	771	773	796	769	854	859	901	951
Carroll	35	25	23	34	32	35	38	40	36	35	33	36
Champaign	48	57	55	63	52	45	58	74	61	72	70	71
Clark	219	263	282	279	331	300	342	357	319	346	349	395
Clermont	289	293	317	326	326	344	385	395	429	405	408	263
Clinton	48	46	49	45	60	74	76	74	75	62	65	80
Columbiana	157	135	188	179	162	220	202	189	178	172	179	188
Coshocton	35	28	37	32	43	35	26	34	36	42	31	19
Crawford	33	42	48	55	45	58	58	74	70	78	66	56
Cuyahoga	6986	7252	7412	7565	7889	8466	8644	8906	8790	8717	8732	8098
Darke	44	48	32	47	47	61	45	44	54	51	67	83
Defiance	26	48	23	37	37	37	35	43	32	69	45	68
Delaware	174	188	207	171	169	142	130	178	117	149	149	139
Erie	160	147	209	170	183	209	227	220	216	201	213	233
Fairfield	205	184	208	204	184	185	179	184	193	186	194	115
Fayette	32	33	48	41	43	27	49	44	36	45	46	56
Franklin	4381	4683	4601	4678	4684	4290	4645	4764	4056	4143	4276	3395
Fulton	39	42	49	41	36	43	52	48	75	62	56	78
Gallia	17	18	9	17	12	15	15	19	19	18	24	11
Geauga	113	131	128	139	121	152	135	161	148	144	137	126
Greene	306	320	282	314	311	322	306	379	321	411	390	379
Guernsey	58	46	27	49	46	61	44	59	66	56	77	47
Hamilton	2990	3112	2999	3172	3046	3374	3559	3578	3593	3701	3814	3925
Hancock	86	125	129	120	115	121	109	118	126	134	133	125
Hardin	29	28	32	47	35	28	36	29	40	51	36	50
Harrison	14	6	9	6	9	13	10	15	12	18	20	10
Henry	24	42	31	34	28	29	23	32	42	30	28	52
Highland	51	44	41	50	53	49	44	46	60	67	68	66
Hocking	33	33	44	26	26	29	25	34	30	27	44	17
Holmes	19	15	22	18	19	21	22	20	12	23	13	30
Huron	79	94	77	79	77	101	123	118	102	115	135	114
Jackson	30	27	35	28	34	26	35	27	32	30	35	20
Jefferson	15	26	38	17	25	23	30	23	24	22	21	21
Knox	72	77	55	66	64	67	65	65	54	70	64	48
Lake	525	544	596	571	592	598	654	563	624	594	616	520
Lawrence	8	16	20	15	32	21	18	10	18	27	20	18



TABLE 4

## RESIDENT INDUCED ABORTIONS REPORTED IN OHIO, BY COUNTY AND AGE, 2007

Residence	Total	Age Group												Unk.
		<15	15	16	17	18	19	20-24	25-29	30-34	35-39	40-44	45+	
OHIO TOTAL	28921	194	365	673	899	1410	1698	9534	6927	3847	2373	701	50	250
Adams	14	0	1	0	0	1	0	3	4	4	1	0	0	0
Allen	121	0	0	1	1	8	9	45	31	12	12	1	0	1
Ashland	52	1	0	0	1	5	1	19	11	9	2	3	0	0
Ashtabula	185	1	2	3	6	17	7	50	47	33	14	5	0	0
Athens	112	1	1	3	0	5	11	51	23	7	6	3	0	1
Auglaize	32	0	1	1	1	1	3	12	7	4	1	1	0	0
Belmont	27	0	1	1	0	1	2	9	6	4	3	0	0	0
Brown	48	0	0	2	4	2	1	14	9	10	5	1	0	0
Butler	720	3	11	16	15	43	35	251	170	87	69	14	0	6
Carroll	35	0	2	1	1	2	2	12	6	6	2	1	0	0
Champaign	48	1	3	1	2	4	3	12	15	6	1	0	0	0
Clark	219	1	1	3	9	8	17	91	31	25	20	6	0	7
Clermont	289	1	4	4	7	14	15	97	71	37	30	6	2	1
Clinton	48	0	0	0	3	1	4	10	15	7	6	2	0	0
Columbiana	157	0	2	3	5	10	14	45	34	19	17	6	0	2
Coshocton	35	0	1	2	1	1	3	11	10	3	3	0	0	0
Crawford	33	0	1	2	2	1	1	11	9	2	2	2	0	0
Cuyahoga	6986	60	93	186	223	323	386	2163	1745	1014	587	169	4	33
Darke	44	0	0	2	1	3	6	12	6	9	4	1	0	0
Defiance	26	0	0	1	1	1	2	10	5	4	1	1	0	0
Delaware	174	2	1	3	3	8	17	58	24	20	28	8	1	1
Erie	160	1	1	4	5	5	8	44	47	31	11	2	0	1
Fairfield	205	0	2	5	6	18	17	48	45	34	24	5	0	1
Fayette	32	0	0	0	0	1	1	7	10	5	5	2	0	1
Franklin	4381	17	37	85	114	172	233	1446	1127	629	362	107	10	42
Fulton	39	0	0	1	1	2	0	15	10	4	3	2	1	0
Gallia	17	0	0	0	1	1	2	10	2	0	1	0	0	0
Geauga	113	0	1	2	5	10	10	30	19	12	15	8	1	0
Greene	306	1	3	6	10	17	25	125	56	26	21	9	1	6
Guernsey	58	0	2	3	2	4	3	12	8	10	9	1	1	3
Hamilton	2990	17	42	62	71	125	165	1086	767	368	185	62	6	34
Hancock	86	1	2	2	2	4	8	28	18	12	4	2	1	2
Hardin	29	0	1	3	1	0	3	10	5	5	1	0	0	0
Harrison	14	0	0	0	1	2	2	4	3	1	1	0	0	0
Henry	24	0	0	1	0	4	0	12	3	4	0	0	0	0
Highland	51	0	1	1	1	2	3	16	8	11	5	3	0	0
Hocking	33	0	1	0	1	1	3	12	11	3	1	0	0	0
Holmes	19	0	0	1	1	0	0	8	5	1	2	0	0	1
Huron	79	0	1	3	2	5	2	30	18	8	7	1	0	2
Jackson	30	0	1	0	0	2	1	10	7	6	3	0	0	0
Jefferson	15	0	0	0	1	0	0	7	3	2	0	1	0	1
Knox	72	0	1	3	2	5	6	24	15	5	8	2	0	1
Lake	525	0	5	12	22	27	38	170	119	66	53	10	2	1
Lawrence	8	0	1	0	0	1	0	3	2	0	1	0	0	0

Table 4 Resident Induced Abortions, 2007 (Page 2)

Residence	Total	Age Group												
		<15	15	16	17	18	19	20-24	25-29	30-34	35-39	40-44	45+	Unk.
Licking	252	2	5	11	14	18	15	79	47	29	22	7	1	2
Logan	42	1	0	2	1	3	2	19	8	4	1	1	0	0
Lorain	726	6	6	14	20	39	35	224	180	116	62	20	2	2
Lucas	1356	14	13	29	45	73	100	472	315	162	92	20	3	18
Madison	54	0	0	0	3	3	7	15	12	5	7	1	0	1
Mahoning	713	5	7	18	29	42	39	223	202	69	52	22	0	5
Marion	93	2	0	7	5	7	5	23	22	13	6	2	0	1
Medina	270	1	5	6	12	13	18	74	58	48	23	9	0	3
Meigs	12	0	0	0	1	0	0	4	5	1	1	0	0	0
Mercer	18	0	1	0	1	0	2	5	4	4	1	0	0	0
Miami	119	1	1	4	6	3	10	30	30	17	15	2	0	0
Monroe	11	0	0	0	1	1	1	3	1	2	2	0	0	0
Montgomery	1420	15	27	35	52	54	74	467	348	182	120	33	1	12
Morgan	7	0	0	0	2	1	0	4	0	0	0	0	0	0
Morrow	34	0	1	2	0	3	1	13	8	2	4	0	0	0
Muskingum	100	0	1	1	5	6	5	34	23	12	9	3	0	1
Noble	11	0	0	0	1	2	0	0	3	2	3	0	0	0
Ottawa	48	0	1	2	2	6	4	15	8	3	3	2	1	1
Paulding	12	0	0	0	0	1	1	4	2	1	2	1	0	0
Perry	32	0	1	0	0	0	1	16	6	4	3	1	0	0
Pickaway	76	0	1	2	2	5	0	26	16	12	11	0	0	1
Pike	27	0	0	1	0	2	0	11	9	2	1	1	0	0
Portage	360	0	5	7	7	15	32	138	73	34	27	17	1	4
Preble	46	1	1	1	2	2	2	17	9	6	4	1	0	0
Putnam	14	0	0	0	1	1	0	4	3	3	2	0	0	0
Richland	177	3	2	4	6	12	8	72	38	16	10	3	1	2
Ross	94	2	3	2	2	7	5	30	26	7	6	4	0	0
Sandusky	79	1	1	1	4	8	5	27	18	5	5	3	0	1
Scioto	60	0	0	3	3	4	4	24	10	2	4	4	0	2
Seneca	50	2	1	1	5	2	2	20	3	5	8	1	0	0
Shelby	53	0	0	3	0	5	3	20	9	8	4	1	0	0
Stark	840	2	12	14	27	59	53	281	186	122	57	18	1	8
Summit	1660	15	25	33	61	77	117	537	360	224	144	39	6	22
Trumbull	501	6	8	11	16	29	28	163	106	64	46	13	1	10
Tuscarawas	121	0	1	4	3	2	6	51	25	11	9	6	0	3
Union	59	0	0	3	4	2	4	17	6	13	7	3	0	0
Van Wert	9	0	1	0	0	1	0	4	1	0	2	0	0	0
Vinton	8	1	1	0	0	0	0	4	1	1	0	0	0	0
Warren	272	1	3	9	8	14	14	74	68	38	34	8	0	1
Washington	27	1	0	1	1	3	1	10	5	3	2	0	0	0
Wayne	115	2	2	7	2	8	5	33	30	12	12	1	0	1
Williams	32	0	1	2	1	0	2	13	7	4	2	0	0	0
Wood	207	2	1	3	8	9	15	89	46	14	11	6	2	1
Wyandot	13	0	0	1	1	1	3	2	3	0	1	1	0	0

TABLE 5a

RESIDENT INDUCED ABORTIONS REPORTED IN OHIO, BY SELECTED  
COUNTIES, RACE AND BROAD AGE GROUPS, 2007

County/Race	Total	Age Group					Unk
		10-19	20-29	30-39	40-49	50 +	
OHIO	28921	5239	16461	6220	750	1	250
White	15691	2778	8850	3424	491	0	148
Black	10840	2106	6291	2174	190	1	78
Oth/Unk	2390	355	1320	622	69	0	24
ALLEN	121	19	76	24	1	0	1
White	77	12	47	16	1	0	1
Black	37	5	25	7	0	0	0
Oth/Unk	7	2	4	1	0	0	0
ASHTABULA	185	36	97	47	5	0	0
White	162	31	82	44	5	0	0
Black	10	4	5	1	0	0	0
Oth/Unk	13	1	10	2	0	0	0
ATHENS	112	21	74	13	3	0	1
White	96	19	66	8	3	0	0
Black	4	1	2	1	0	0	0
Oth/Unk	12	1	6	4	0	0	1
BUTLER	720	123	421	156	14	0	6
White	515	89	309	103	10	0	4
Black	132	27	67	32	4	0	2
Oth/Unk	73	7	45	21	0	0	0
CLARK	219	39	122	45	6	0	7
White	167	28	95	32	6	0	6
Black	40	7	21	11	0	0	1
Oth/Unk	12	4	6	2	0	0	0
CLERMONT	289	45	168	67	8	0	1
White	269	42	157	61	8	0	1
Black	7	2	5	0	0	0	0
Oth/Unk	13	1	6	6	0	0	0
COLUMBIANA	157	34	79	36	6	0	2
White	150	32	5	35	6	0	2
Black	3	1	1	1	0	0	0
Oth/Unk	4	1	3	0	0	0	0
CUYAHOGA	6986	1271	3908	1601	173	0	33
White	2114	336	1156	536	72	0	14
Black	4267	838	2435	902	76	0	16
Oth/Unk	605	97	317	163	25	0	3
DELAWARE	174	34	82	48	9	0	1
White	138	30	71	32	4	0	1
Black	9	2	4	2	1	0	0

Table 5a. Resident Induced Abortions, 2007 (Page 2)

County/Race	Total	Age Group					Unk
		10-19	20-29	30-39	40-49	50+	
ERIE	160	24	91	42	2	0	1
White	105	19	53	31	1	0	1
Black	43	3	33	6	1	0	0
Oth/Unk	12	2	5	5	0	0	0
FAIRFIELD	205	48	93	58	5	0	1
White	161	38	75	42	5	0	1
Black	37	8	15	14	0	0	0
Oth/Unk	7	2	3	2	0	0	0
FRANKLIN	4381	658	2573	991	116	1	42
White	2007	284	1220	421	59	0	23
Black	1860	312	1062	432	38	1	15
Oth/Unk	514	62	291	138	19	0	4
GREENE	306	62	181	47	10	0	6
White	197	40	110	32	9	0	6
Black	89	20	61	8	0	0	0
Oth/Unk	20	2	10	7	1	0	0
HAMILTON	2990	482	1853	553	68	0	34
White	1212	181	743	239	40	0	9
Black	1532	276	952	257	25	0	22
Oth/Unk	246	25	158	57	3	0	3
HANCOCK	86	19	46	16	3	0	2
White	73	17	40	11	3	0	2
Black	3	1	1	1	0	0	0
Oth/Unk	10	1	5	4	0	0	0
JEFFERSON	15	1	10	2	1	0	1
White	13	1	10	2	0	0	0
Black	2	0	0	0	1	0	1
KNOX	72	17	39	13	2	0	1
White	69	17	36	13	2	0	1
Black	1	0	1	0	0	0	0
Oth/Unk	2	0	2	0	0	0	0
LAKE	525	104	289	119	12	0	1
White	422	91	225	96	10	0	0
Black	54	10	33	10	1	0	0
Oth/Unk	49	3	31	13	1	0	1
LICKING	252	65	126	51	8	0	2
White	219	54	110	45	8	0	2
Black	21	9	8	4	0	0	0
Oth/Unk	12	2	8	2	0	0	0
LORAIN	726	120	404	178	22	0	2
White	496	80	265	129	20	0	2
Black	130	19	82	29	0	0	0

Table 5a. Resident Induced Abortions, 2007 (Page 3)

County/Race	Total	Age Group					Unk
		10-19	20-29	30-39	40-49	50+	
LUCAS	1356	274	787	254	23	0	18
White	627	109	362	134	15	0	7
Black	552	119	331	88	7	0	7
Oth/Unk	177	46	94	32	1	0	4
MAHONING	713	140	425	121	22	0	5
White	380	64	222	77	14	0	3
Black	300	66	183	41	8	0	2
Oth/Unk	33	10	20	3	0	0	0
MARION	93	26	45	19	2	0	1
White	77	23	38	13	2	0	1
Black	10	3	4	3	0	0	0
Oth/Unk	6	0	3	3	0	0	0
MEDINA	270	55	132	71	9	0	3
White	250	52	122	65	8	0	3
Black	11	3	4	4	0	0	0
Oth/Unk	9	0	6	2	1	0	0
MIAMI	119	25	60	32	2	0	0
White	104	24	50	28	2	0	0
Black	9	0	7	2	0	0	0
Oth/Unk	6	1	3	2	0	0	0
MONTGOMERY	1420	257	815	302	34	0	12
White	677	108	383	160	18	0	8
Black	649	138	371	124	13	0	3
Oth/Unk	94	11	61	18	3	0	1
PORTAGE	360	66	211	61	18	0	4
White	300	55	177	46	18	0	4
Black	44	10	28	6	0	0	0
Oth/Unk	16	1	6	9	0	0	0
RICHLAND	177	35	110	26	4	0	2
White	136	22	86	23	4	0	1
Black	33	10	19	3	0	0	1
Oth/Unk	8	3	5	0	0	0	0
SANDUSKY	79	20	45	10	3	0	1
White	62	16	37	6	3	0	0
Black	7	2	4	1	0	0	0
Oth/Unk	10	2	4	3	0	0	1
SCIOTO	60	14	34	6	4	0	2
White	55	13	31	6	4	0	1
Black	4	1	2	0	0	0	1
Oth/Unk	1	0	1	0	0	0	0



Table 5a. Resident Induced Abortions, 2007 (Page 4)

County/Race	Total	Age Group					Unk
		10-19	20-29	30-39	40-49	50+	
SENECA	50	13	23	13	1	0	0
White	44	10	21	12	1	0	0
Black	2	2	0	0	0	0	0
Oth/Unk	4	1	2	1	0	0	0
STARK	840	167	467	179	19	0	8
White	641	125	351	140	18	0	7
Black	154	35	92	26	1	0	0
Oth/Unk	45	7	24	13	0	0	1
SUMMIT	1660	328	897	368	45	0	22
White	1005	192	542	226	32	0	13
Black	574	127	314	119	8	0	6
Oth/Unk	81	9	41	23	5	0	3
TRUMBULL	501	98	269	110	14	0	10
White	383	86	197	82	10	0	8
Black	108	11	68	24	4	0	1
Oth/Unk	10	1	4	4	0	0	1
WARREN	272	49	142	72	8	0	1
White	221	37	126	50	7	0	1
Black	25	10	10	5	0	0	0
Oth/Unk	26	2	6	17	1	0	0
WAYNE	115	26	63	24	1	0	1
White	107	22	61	22	1	0	1
Black	5	2	1	2	0	0	0
Oth/Unk	3	2	1	0	0	0	0
WOOD	207	38	135	25	8	0	1
White	159	30	101	20	7	0	1
Black	12	5	6	0	1	0	0
Oth/Unk	36	3	28	5	0	0	0

TABLE 5b

## RESIDENT INDUCED ABORTIONS REPORTED IN OHIO, BY SELECTED COUNTIES, RACE AND AGE, 2007

County/Race	Total	Age Group															Unk.
		<15	15	16	17	18	19	15-19	20	21	20-24	25-29	30-34	35-39	40-44	45+	
OHIO	28921	194	365	673	899	1410	1698	5045	1899	2054	9534	6927	3847	2373	701	50	250
White	15691	76	172	339	498	778	915	2702	1058	1158	5331	3519	2006	1418	455	36	148
Black	10840	106	172	291	350	529	658	2000	713	727	3487	2804	1450	724	181	10	78
Oth/Unk	2390	12	21	43	51	103	125	343	128	169	716	604	391	231	65	4	24
BUTLER	720	3	11	16	15	43	35	120	43	64	251	170	87	69	14	0	6
White	515	2	8	11	10	31	27	87	34	47	196	113	56	47	10	0	4
Black	132	1	3	4	3	11	5	26	4	9	25	42	19	13	4	0	2
Oth/Unk	73	0	0	1	2	1	3	7	5	8	30	15	12	9	0	0	0
CUYAHOGA	6986	60	93	186	223	323	386	1211	409	470	2163	1745	1014	587	169	4	33
White	2114	6	19	46	63	89	113	330	106	152	685	471	315	221	70	2	14
Black	4267	49	68	127	146	209	239	789	275	281	1314	1121	589	313	74	2	16
Oth/Unk	605	5	6	13	14	25	34	92	28	37	164	153	110	53	25	0	3
FRANKLIN	4381	17	37	85	114	172	233	641	270	293	1446	1127	629	362	107	10	42
White	2007	4	15	33	54	76	102	280	130	144	710	510	272	149	54	5	23
Black	1860	12	19	46	53	78	104	300	120	116	590	472	274	158	35	4	15
Oth/Unk	514	1	3	6	7	18	27	61	20	33	146	145	83	55	18	1	4
GREENE	306	1	3	6	10	17	25	61	29	40	125	56	26	21	9	1	6
White	197	1	2	5	6	12	14	39	19	25	76	34	16	16	8	1	6
Black	89	0	1	1	3	5	10	20	9	13	43	18	6	2	0	0	0
Oth/Unk	20	0	0	0	1	0	1	2	1	2	6	4	4	3	1	0	0

Table 5b. Resident Induced Abortions, 2007 (Page 2)

County/Race	Total	Age Group															Unk.
		<15	15	16	17	18	19	15-19	20	21	20-24	25-29	30-34	35-39	40-44	45 +	
HAMILTON	2990	17	42	62	71	125	165	465	208	232	1086	767	368	185	62	6	34
White	1212	5	9	27	26	48	66	176	88	97	455	288	156	83	36	4	9
Black	1532	15	32	30	43	71	88	264	102	118	550	402	182	75	23	2	22
Oth/Unk	246	0	1	5	2	6	11	25	18	17	81	77	30	27	3	0	3
LORAIN	726	6	6	14	20	39	35	114	49	41	224	180	116	62	20	2	2
White	496	3	1	8	13	28	27	77	32	26	145	120	84	45	18	2	2
Black	130	2	3	2	3	5	4	17	9	8	43	39	20	9	0	0	0
Oth/Unk	100	1	2	4	4	6	4	20	8	7	36	21	12	8	2	0	0
LUCAS	1356	14	13	29	45	73	100	260	89	105	472	315	162	92	20	3	18
White	627	7	4	9	20	29	40	102	45	49	226	136	76	58	13	2	7
Black	552	5	5	14	20	28	47	114	38	42	192	139	63	25	6	1	7
Oth/Unk	177	2	4	6	5	16	13	44	6	14	54	40	23	9	1	0	4
MONTGOMERY	1420	15	27	35	52	54	74	242	103	102	467	348	182	120	33	1	12
White	677	6	10	13	26	20	33	102	59	48	223	160	87	73	17	1	8
Black	649	8	16	22	22	33	37	130	39	43	208	163	84	40	13	0	3
Oth/Unk	94	1	1	0	4	1	4	10	5	11	36	25	11	7	3	0	1
SUMMIT	1660	15	25	33	61	77	117	313	107	113	537	360	224	144	39	6	22
White	1005	9	14	18	40	44	67	183	65	78	334	208	125	101	29	3	13
Black	574	6	10	13	19	31	48	121	38	30	181	133	83	36	8	0	6
Oth/Unk	81	0	1	2	2	2	2	9	4	5	22	19	16	7	2	3	3



TABLE 7

## INDUCED ABORTIONS REPORTED IN OHIO, BY METHOD OF TERMINATION AND COUNTY OF OCCURRENCE, 2007

County of Occurrence	Method of Termination											
	TOTAL	Curretage		D & Ext	D & Evac	Saline Instill	Prostag Instill	Hyster- otomy	Hyster- ectomy	Other	Non Surgical	Not Reported
		Suction	Sharp									
OHIO	30820	22678	147	254	3000	49	189	5	4	498	4668	325
CLARK COUNTY	1	0	0	0	0	0	0	0	0	1	0	0
CUYAHOGA	9700	7210	135	16	1476	6	22	3	3	486	984	179
FRANKLIN	6594	4881	2	45	248	13	117	0	1	2	1281	49
GREENE	312	3	0	0	0	0	0	0	0	0	1281	49
HAMILTON	5114	4547	4	13	375	1	12	1	0	2	173	25
LUCAS	2212	1615	1	10	230	6	4	0	0	0	340	16
MAHONING	817	745	0	0	0	0	0	0	0	0	68	5
MONTGOMERY	2403	1946	1	16	340	4	7	0	0	4	73	26
SUMMIT	3667	1731	4	154	331	19	27	1	0	3	1439	25

Does not add due to reporting of combination procedures.

TABLE 8

TOTAL INDUCED ABORTIONS REPORTED IN OHIO, BY  
GESTATIONAL AGE, 2007

Gestational Age	Number	Percent
Total Abortions Reported	30859	100.0
Less than 9 Weeks	17023	55.2
9 - 12 Weeks	8855	28.7
13 - 19 Weeks	3811	12.3
20 Weeks	188	0.6
21 - 24	486	1.6
25 - 36 Weeks	16	0.1
Unknown	480	1.6

TABLE 9

RESIDENT INDUCED ABORTIONS IN OHIO, BY AGE OF WOMEN OBTAINING ABORTION  
AND BY NUMBER OF PRIOR INDUCED ABORTIONS, 2007

Age Group	Total	Prior Induced Abortion						Unk
		0	1	2	3	4	5+	
Total Abortions	28921	13978	7492	3277	1224	443	385	2122
Under 15	194	153	9	3	0	0	0	29
15-19	5045	3698	688	101	16	4	3	535
20-24	9534	50247	2464	907	288	72	42	737
25-29	6927	2533	2135	1108	437	178	141	395
30-34	3847	1300	1165	648	292	121	110	211
35-39	2373	831	730	406	150	478	66	142
40-44	701	296	216	73	33	18	21	44
45-59	50	23	16	6	1	0	0	4
Unknown	250	120	69	25	7	2	2	25

TABLE 10a

TOTAL INDUCED ABORTIONS IN OHIO WITH POST-ABORTION COMPLICATIONS, BY  
TYPE OF COMPLICATION, 2007

(DATA SOURCE IS 'POST-ABORTION CARE REPORT FOR COMPLICATIONS')

Complication Type	Number of Complications	Percent of Abortions with Complications
Perforation of Uterus	0	0.00%
Cervical Laceration	0	0.00%
Hemorrhage	6	0.02%
Incomplete Abortion	34	0.11%
Hematometra	15	0.05%
Anesthetic	0	0.00%
Failed Abortion	2	0.01%
Infection	6	0.02%
Death	0	0.00%
Other	1	0.00%
Total Number of Complications*	64	Not Applicable
Total Abortions with One or More Complications	56	0.2%



TABLE 10b

TOTAL INDUCED ABORTIONS IN OHIO WITH POST-ABORTION COMPLICATIONS, BY  
TYPE OF COMPLICATION, 2007

(DATA SOURCE IS 'CONFIDENTIAL ABORTION REPORT')

Complication Type	Number of Complications	Percent of Abortions with Complications
Perforation of Uterus	0	0.00%
Cervical Laceration	9	0.03%
Hemorrhage	7	0.02%
Incomplete Abortion	2	0.01%
Hematometra	2	0.01%
Anesthetic	1	0.00%
Failed Abortion	1	0.00%
Infection	13	0.04%
Death	0	0.00%
Other	10	0.03%
Total Number of Complications*	45	Not Applicable
Total Abortions with One or More Complications	38	0.12%

\* Note: An abortion may have more than one reported complication. Complications reported in this table may or may not also be reported in Table 10a.

TABLE 11

TOTAL INDUCED ABORTIONS IN OHIO WITH POST-ABORTION COMPLICATIONS, BY  
TYPE OF COMPLICATION AND GESTATION PERIOD, 2007

(DATA SOURCE IS POST-ABORTION CARE REPORT FOR COMPLICATIONS')

Complication Type	Total	Gestation Period				Unk
		< 9 Wks	9-12 Wks	13-19 Wks	20+ Wks	
(Number of Complications)						
Perforation of Uterus	0	0	0	0	0	0
Cervical Laceration	0	0	0	0	0	0
Hemorrhage	6	2	1	3	0	0
Incomplete Abortion	34	20	10	4	0	0
Hematometra	15	5	8	2	0	0
Anesthetic	0	0	0	0	0	0
Failed Abortion	2	2	0	0	0	0
Infection	6	2	3	1	0	0
Death	0	0	0	0	0	0
Other/Unreported	1	1	0	0	0	0
Total Number of Complications*	64	32	22	10	0	0
Total Abortions with One or More Complications	56	30	18	8	0	0

NOTE: An abortion may have more than one reported complication. Complications reported in this table may or may not also be reported in Table 10b.

TABLE 12

TOTAL INDUCED ABORTIONS IN OHIO WITH POST-ABORTION COMPLICATIONS, BY TYPE OF COMPLICATION  
AND TERMINATION METHOD, 2007

(DATA SOURCE IS 'CONFIDENTIAL ABORTION REPORTS')

Method of Termination	Complication Type									Total Complications	Abortions w/ One or More Complications
	Hemorrhage	Perforation of Uterus	Cervical Laceration	Infection	Anesthetic	Failed Abortion	Incomplete Abortion	Hematometra	Other		
A. Suction Curettage	5	0	4	9	0	0	0	2	5	25	21
B. Sharp Curettage	0	0	0	0	0	0	0	0	0	0	0
C. Dilation & Extraction	0	0	0	0	0	0	0	0	0	0	0
D. Dilation & Evacuation	1	0	4	0	1	0	0	0	3	9	6
E. Saline/Urea Instillation	0	0	0	0	0	0	0	0	0	0	0
F. Prostaglandin Instill.	0	0	1	4	0	0	0	0	0	5	5
G. Hysterotomy	0	0	0	0	0	0	0	0	0	0	0
H. Hysterectomy	0	0	0	0	0	0	0	0	0	0	0
I. Other/Unknown	1	0	0	0	0	0	0	0	0	1	1
J. Medical/Nonsurgical	0	0	0	0	0	1	2	0	2	5	5

Source: Confidential Abortion Reports. Numbers are comparable to Table 10b, but not Tables 10a and 11 because those tables are based on Post-Abortion Care Reports for Complications. Complications from the two data sources cannot be summed.

TABLE 13

## RESIDENT INDUCED ABORTIONS BY ZIP CODE OF PATIENT, OHIO, 2007

Zip Code	Total	Zip Code	Total	Zip Code	Total	Zip Code	Total	Zip Code	Total
43001	3	43085	45	43213	148	43403	7	43558	11
43002	1	43086	1	43214	51	43410	11	43560	29
43003	1	43087	1	43215	40	43412	5	43566	6
43004	96	43102	2	43217	14	43413	2	43567	10
43005	1	43103	18	43219	179	43414	2	43569	5
43008	4	43105	9	43220	69	43416	6	43570	4
43009	5	43106	1	43221	54	43420	47	43571	4
43011	9	43107	7	43222	10	43426	1	43601	3
43013	2	43108	1	43223	83	43430	6	43602	15
43014	4	43109	1	43224	168	43431	5	43603	2
43015	60	43110	127	43225	2	43432	2	43604	64
43016	68	43112	3	43226	1	43433	1	43605	102
43017	75	43113	36	43227	127	43440	4	43606	104
43018	1	43114	1	43228	202	43445	4	43607	137
43019	5	43115	1	43229	285	43447	4	43608	78
43021	8	43116	3	43230	142	43449	7	43609	82
43022	8	43119	99	43231	94	43450	1	43610	37
43023	12	43120	2	43232	306	43451	1	43611	54
43024	2	43121	1	43233	1	43452	17	43612	118
43025	4	43123	123	43234	5	43456	1	43613	97
43026	118	43125	30	43235	111	43457	1	43614	78
43028	9	43126	1	43237	3	43460	14	43615	129
43029	1	43128	3	43240	6	43464	1	43616	32
43031	20	43130	68	43261	1	43465	6	43617	7
43032	1	43135	3	43302	71	43466	1	43618	2
43035	44	43136	2	43307	1	43468	1	43619	12
43036	1	43137	6	43310	4	43469	2	43620	23
43038	2	43138	25	43311	22	43482	1	43623	42
43040	44	43140	31	43314	5	43502	5	43624	4
43043	1	43141	1	43315	14	43506	10	43628	1
43044	7	43143	10	43316	3	43511	2	43637	1
43046	7	43145	2	43318	3	43512	22	43664	1
43047	1	43146	10	43319	1	43515	9	43697	1
43048	1	43147	70	43320	3	43516	2	43701	70
43050	46	43148	2	43321	1	43517	3	43703	1
43052	1	43149	1	43322	2	43518	1	43710	1
43054	27	43150	2	43323	1	43520	1	43713	8
43055	113	43153	1	43324	2	43521	1	43716	2
43056	22	43154	2	43326	16	43522	4	43720	2
43060	12	43155	5	43331	4	43525	3	43723	11
43061	5	43157	1	43332	3	43526	3	43724	5
43062	55	43160	30	43334	8	43527	2	43725	21
43063	1	43162	9	43338	7	43528	23	43726	1
43064	12	43164	2	43340	1	43532	4	43728	1
43065	34	43201	149	43341	1	43533	3	43730	3
43066	1	43202	80	43342	4	43534	1	43731	3
43067	1	43203	54	43343	1	43535	1	43733	1
43068	213	43204	117	43344	7	43537	47	43734	1
43069	1	43205	65	43347	1	43540	3	43739	4
43071	2	43206	98	43348	4	43542	1	43743	1
43072	5	43207	161	43350	1	43543	5	43748	1
43074	19	43208	3	43351	8	43545	15	43749	5
43076	7	43209	81	43356	1	43549	1	43755	1
43077	1	43210	15	43357	3	43551	50	43756	4
43078	23	43211	113	43360	1	43554	8	43758	3
43080	6	43212	61	43402	78	43556	2	43760	2

Table 13 Resident Induced Abortions by Zip Code of Patient, 2007 (Page 2)

Zip Code	Total	Zip Code	Total	Zip Code	Total	Zip Code	Total	Zip Code	Total
43762	9	43976	1	44076	11	44137	212	44250	3
43764	11	43986	1	44077	132	44138	48	44251	2
43766	1	43988	1	44078	1	44139	46	44253	5
43768	4	43998	1	44080	1	44140	22	44254	7
43771	2	44001	39	44081	10	44141	14	44255	15
43772	4	44002	3	44082	4	44142	60	44256	99
43773	4	44003	3	44084	9	44143	86	44260	33
43777	5	44004	69	44085	4	44144	75	44262	9
43081	145	44005	1	44086	5	44145	55	44264	4
43082	31	44006	2	44087	50	44146	186	44266	70
43778	2	44007	2	44089	29	44147	52	44270	9
43780	3	44010	1	44090	19	44148	1	44272	8
43782	1	44011	29	44092	63	44149	23	44273	12
43783	4	44012	43	44093	6	44150	1	44274	2
43788	2	44014	1	44094	83	44156	2	44275	7
43793	1	44017	54	44095	81	44162	1	44276	3
43802	2	44018	2	44096	2	44165	1	44278	40
43804	1	44019	1	44098	1	44166	1	44280	3
43812	23	44021	6	44099	2	44167	1	44281	44
43821	6	44022	26	44100	7	44172	2	44286	9
43822	4	44023	26	44101	5	44177	1	44287	9
43824	1	44024	27	44102	254	44185	1	44288	12
43825	1	44025	1	44103	188	44189	1	44301	70
43830	11	44026	14	44104	344	44194	1	44302	27
43832	13	44027	1	44105	446	44199	2	44303	26
43836	1	44028	20	44106	190	44201	10	44304	24
43837	3	44030	29	44107	218	44202	31	44305	86
43840	1	44033	2	44108	317	44203	112	44306	118
43842	2	44035	192	44109	190	44204	1	44307	61
43844	2	44037	1	44110	245	44211	2	44309	3
43845	4	44039	48	44111	172	44212	77	44310	92
43862	1	44040	3	44112	241	44213	1	44311	56
43880	1	44041	36	44113	105	44214	3	44312	69
43885	1	44044	12	44114	27	44215	9	44313	105
43902	1	44046	1	44115	112	44216	21	44314	61
43903	1	44047	20	44116	55	44217	6	44316	3
43906	5	44048	4	44117	72	44218	2	44319	44
43907	6	44050	9	44118	241	44220	2	44320	115
43909	1	44052	128	44119	90	44221	72	44321	19
43912	1	44053	48	44120	408	44223	40	44325	4
43915	1	44054	42	44121	224	44224	86	44327	1
43917	1	44055	67	44122	138	44225	1	44333	24
43920	31	44056	23	44123	113	44226	2	44334	1
43926	1	44057	33	44124	137	44228	1	44354	1
43932	1	44058	2	44125	173	44230	5	44401	4
43933	1	44060	120	44126	43	44231	11	44402	4
43938	1	44061	1	44127	44	44233	9	44403	8
43942	1	44062	10	44128	317	44234	6	44404	1
43945	2	44064	1	44129	109	44235	1	44405	21
43947	1	44065	10	44130	169	44236	18	44406	40
43950	7	44066	1	44131	35	44240	130	44408	15
43952	3	44067	48	44132	104	44241	41	44410	34
43953	1	44070	67	44133	59	44242	7	44411	3
43964	1	44071	1	44134	114	44243	9	44412	4
43968	16	44072	6	44135	116	44244	1	44413	17
43973	1	44074	18	44136	55	44246	1	44415	1

Table 13 Resident Induced Abortions by Zip Code of Patient, 2007 (Page 3)

Zip Code	Total	Zip Code	Total	Zip Code	Total	Zip Code	Total	Zip Code	Total
44417	1	44576	1	44685	39	44851	5	45055	1
44418	1	44601	71	44688	2	44852	1	45056	48
44420	34	44604	1	44689	2	44853	1	45062	1
44423	5	44606	8	44691	41	44854	1	45064	2
44425	38	44607	2	44699	2	44855	1	45065	9
44427	4	44608	4	44701	3	44856	1	45066	28
44428	6	44609	4	44702	5	44857	38	45067	26
44429	3	44612	7	44703	35	44859	1	45068	8
44430	14	44613	5	44704	19	44864	6	45069	95
44431	5	44614	30	44705	85	44865	4	45080	1
44432	10	44615	14	44706	39	44866	1	45081	1
44435	1	44618	5	44707	32	44870	110	45101	3
44436	6	44619	1	44708	45	44875	11	45102	38
44437	6	44620	3	44709	50	44878	4	45103	55
44438	15	44621	12	44710	24	44880	4	45105	2
44440	8	44622	25	44711	1	44883	27	45106	21
44441	3	44624	4	44714	25	44889	10	45107	12
44442	2	44625	3	44716	1	44890	13	45110	1
44443	4	44626	8	44718	21	44901	1	45111	1
44444	22	44628	1	44720	58	44902	12	45115	1
44445	4	44629	3	44721	22	44903	41	45118	4
44446	51	44632	11	44723	1	44904	15	45119	1
44450	2	44633	2	44730	11	44905	17	45120	9
44451	9	44634	1	44767	1	44906	29	45121	8
44452	11	44635	1	44771	1	44907	35	45122	7
44460	35	44637	1	44773	1	44980	1	45123	10
44466	1	44638	3	44790	1	45000	1	45126	1
44470	7	44641	41	44802	1	45001	4	45130	4
44471	21	44642	1	44804	1	45002	26	45132	1
44472	1	44643	6	44805	29	45003	2	45133	24
44473	11	44644	6	44809	1	45004	1	45135	3
44477	1	44645	2	44810	3	45005	43	45139	1
44481	16	44646	120	44811	12	45006	3	45140	94
44482	2	44647	25	44813	5	45009	1	45142	7
44483	74	44649	1	44815	3	45011	149	45144	6
44484	61	44651	1	44817	1	45012	1	45146	5
44485	88	44652	2	44818	1	45013	100	45148	3
44487	1	44653	2	44820	17	45014	132	45150	43
44490	2	44654	11	44822	1	45015	28	45152	11
44491	6	44656	8	44824	2	45017	1	45153	2
44493	1	44657	12	44826	5	45020	1	45154	13
44501	2	44659	2	44827	4	45021	1	45157	9
44502	54	44662	12	44830	27	45024	1	45159	5
44503	2	44663	34	44832	2	45030	26	45162	5
44504	25	44666	8	44833	12	45033	1	45163	1
44505	73	44667	12	44836	2	45036	49	45167	2
44506	10	44669	6	44837	4	45039	33	45168	1
44507	37	44671	1	44839	21	45040	90	45169	7
44509	66	44672	7	44840	5	45041	1	45170	1
44510	6	44675	1	44842	6	45042	50	45171	8
44511	72	44676	4	44843	3	45044	129	45176	7
44512	99	44677	3	44844	1	45048	1	45177	25
44513	1	44680	4	44845	1	45050	20	45182	2
44514	37	44681	2	44846	2	45052	3	45190	1
44515	99	44682	5	44847	6	45053	1	45200	1
44572	1	44683	10	44849	2	45054	1	45202	63

Table 13 Resident Induced Abortions by Zip Code of Patient, 2007 (Page 4)

Zip Code	Total	Zip Code	Total	Zip Code	Total	Zip Code	Total	Zip Code	Total
45203	14	45303	2	45402	44	45634	4	45779	2
45204	34	45304	9	45403	37	45638	2	45780	5
45205	88	45305	24	45404	37	45640	13	45794	1
45206	70	45306	3	45405	91	45644	6	45801	38
45207	35	45308	5	45406	111	45647	1	45804	18
45208	40	45309	12	45407	2	45648	5	45805	38
45209	39	45311	4	45408	47	45652	7	45806	11
45211	148	45313	1	45409	10	45653	1	45807	7
45212	70	45314	6	45410	42	45654	1	45810	10
45213	52	45315	3	45413	1	45656	8	45812	3
45214	74	45317	4	45414	72	45657	1	45813	1
45215	101	45318	4	45415	25	45660	2	45814	2
45216	32	45320	15	45416	37	45661	9	45816	1
45217	31	45321	3	45417	40	45662	35	45817	5
45218	15	45322	34	45418	16	45663	3	45822	10
45219	123	45323	7	45419	31	45669	1	45828	1
45220	71	45324	103	45420	60	45672	1	45830	2
45221	2	45325	3	45421	1	45674	1	45831	1
45222	1	45327	7	45424	110	45678	1	45833	6
45223	83	45331	24	45425	1	45680	3	45838	1
45224	81	45335	5	45426	94	45681	2	45840	78
45225	78	45336	1	45427	40	45682	1	45843	1
45226	13	45337	2	45429	36	45684	2	45844	1
45227	71	45338	7	45430	8	45685	4	45845	3
45228	1	45339	1	45431	61	45686	2	45846	1
45229	81	45340	1	45432	32	45688	1	45849	1
45230	55	45341	7	45433	2	45690	16	45850	1
45231	177	45342	63	45434	18	45692	8	45855	1
45232	53	45344	28	45435	3	45693	4	45856	3
45233	16	45345	8	45439	28	45694	8	45859	1
45234	2	45346	2	45440	34	45697	2	45862	1
45235	2	45347	5	45449	49	45698	1	45863	1
45236	60	45354	1	45451	2	45701	72	45865	1
45237	101	45356	36	45458	54	45707	1	45867	2
45238	149	45358	1	45459	46	45710	4	45869	1
45239	120	45359	2	45468	1	45714	5	45870	1
45240	132	45363	1	45485	1	45715	2	45872	8
45241	38	45365	41	45501	1	45716	3	45873	3
45242	31	45368	6	45502	22	45719	1	45875	5
45243	16	45369	2	45503	56	45722	1	45876	1
45244	52	45370	3	45504	27	45723	2	45877	1
45245	42	45371	18	45505	35	45732	5	45879	3
45246	55	45372	1	45506	33	45734	1	45880	1
45247	39	45373	46	45524	2	45735	3	45881	1
45248	37	45377	22	45565	1	45737	1	45882	2
45249	32	45378	3	45571	1	45740	2	45883	3
45251	71	45380	3	45580	1	45742	4	45885	8
45252	4	45381	8	45601	70	45744	2	45886	1
45253	1	45382	2	45612	5	45745	1	45887	3
45255	28	45383	4	45613	1	45750	15	45889	1
45265	1	45384	10	45614	3	45760	1	45890	1
45274	1	45385	54	45616	1	45761	2	45891	5
45278	1	45387	7	45617	1	45764	14	45894	1
45282	1	45388	1	45619	1	45767	1	45895	18
45294	1	45390	1	45623	1	45769	7	45897	1
45296	1	45400	2	45628	4	45773	1	45920	1
45302	4	45401	2	45631	6	45778	2	99999	120

# Confidential Abortion Report

Ohio Department of Health  
(Required pursuant to O.A.C. 3701-47-03)

1. Facility name:	For State Use Only
2. Address: <span style="float: right;">Zip code: <input style="width: 40px;" type="text"/></span>	

## GENERAL INFORMATION

3. Zip code of address of the woman: <input style="width: 100%;" type="text"/>	Ohio County of Residence (specify):	Non-Ohio State of Residence (specify):
4. Woman's identification number: <input style="width: 100%;" type="text"/>	5. Age of woman: <input style="width: 40px;" type="text"/>	6. Education: Specify highest number of years completed <input style="width: 40px;" type="text"/>
7. Marital status: <input type="checkbox"/> Never married <input type="checkbox"/> Divorced <input type="checkbox"/> Married <input type="checkbox"/> Widowed <input type="checkbox"/> Separated <input type="checkbox"/> Unknown	8A. Race or ethnic group: <input type="checkbox"/> White <input type="checkbox"/> Asian/Pacific Islander <input type="checkbox"/> Black <input type="checkbox"/> Other /Unknown (specify) _____ <input type="checkbox"/> American Indian	8B. Is woman Hispanic? <input type="checkbox"/> Yes <input type="checkbox"/> No

## MEDICAL HISTORY

9. Number of living children: <input style="width: 40px;" type="text"/>	10. Date of last live birth: <input style="width: 40px;" type="text"/> m <input style="width: 40px;" type="text"/> d <input style="width: 40px;" type="text"/> y <input style="width: 40px;" type="text"/>	
11. Number of prior abortions: Spontaneous <input style="width: 40px;" type="text"/> Induced <input style="width: 40px;" type="text"/>	12. Date of last Induced abortion: <input style="width: 40px;" type="text"/> m <input style="width: 40px;" type="text"/> d <input style="width: 40px;" type="text"/> y <input style="width: 40px;" type="text"/>	
13. Number of previous pregnancies: <input style="width: 40px;" type="text"/>	14. Contraceptive History: Was the woman practicing contraception at the time of conception? <input type="checkbox"/> Yes <input type="checkbox"/> No. <input type="checkbox"/> Unknown	
15. Method. If yes to number 14, what was the method used?: <input type="checkbox"/> Pill, Norplant, Depo-Provera <input type="checkbox"/> Surgical <input type="checkbox"/> Condom, Jelly, Cervical Cap, Sponge, Insert <input type="checkbox"/> Other (specify) _____ <input type="checkbox"/> Rhythm, Coitus Interruptus	16. First day of last menstrual period: <input style="width: 40px;" type="text"/> m <input style="width: 40px;" type="text"/> d <input style="width: 40px;" type="text"/> y <input style="width: 40px;" type="text"/>	17. Rh type of woman: <input type="checkbox"/> Negative <input type="checkbox"/> Positive

## MEDICAL PROCEDURE

18. Date of Termination: <input style="width: 40px;" type="text"/> m <input style="width: 40px;" type="text"/> d <input style="width: 40px;" type="text"/> y <input style="width: 40px;" type="text"/>	19A. Clinical Estimate of Gestation in weeks: <input style="width: 40px;" type="text"/>	19B. If 19A is 14 or greater, were discharge instructions given as per O.A.C. 3701-47-02? <input type="checkbox"/> YES <input type="checkbox"/> NO
20. Method of Termination: <input type="checkbox"/> Suction Curettage <input type="checkbox"/> Sharp Curettage <input type="checkbox"/> Dilation & Extraction <input type="checkbox"/> Dilation & Evacuation <input type="checkbox"/> Saline/Urea Installation <input type="checkbox"/> Prostaglandin Installation <input type="checkbox"/> Hysterotomy <input type="checkbox"/> Hysterectomy <input type="checkbox"/> Other (specify) _____ <input type="checkbox"/> Medical (NonSurgical) Specify Medication(s) _____		
21. Medical condition of the woman at the time of the abortion: <input type="checkbox"/> Good <input type="checkbox"/> Fair <input type="checkbox"/> Other (specify) _____	22. Type of procedure done immediately after the abortion: <input type="checkbox"/> Sterilization <input type="checkbox"/> None <input type="checkbox"/> Other (specify) _____	
23. Post Abortion Complications (Indicate all): <input type="checkbox"/> None <input type="checkbox"/> Hemorrhage <input type="checkbox"/> Perforation of uterus <input type="checkbox"/> Cervical laceration <input type="checkbox"/> Infection <input type="checkbox"/> Anesthetic <input type="checkbox"/> Failed Abortion <input type="checkbox"/> Incomplete Abortio <input type="checkbox"/> Hematometra <input type="checkbox"/> Death <input type="checkbox"/> Other (specify) _____	24. Type of family planning recommended: <input type="checkbox"/> Pill, Norplant, Depo-Provera <input type="checkbox"/> Condom, Jelly, Cervical Cap, Sponge, Insert <input type="checkbox"/> Rhythm, Coitus Interruptus <input type="checkbox"/> Surgical <input type="checkbox"/> Other (specify) _____	
25. Type of Counseling given: <input type="checkbox"/> Psychological <input type="checkbox"/> Social Service <input type="checkbox"/> Pastoral <input type="checkbox"/> Medical <input type="checkbox"/> Other (specify) _____ <input type="checkbox"/> None		
26. Physician's name (Type or print):	M.D. D.O.	Physician's Signature: _____ Date: _____

**Send completed forms to:  
OHIO DEPARTMENT OF HEALTH,  
CONFIDENTIAL REPORTS A,  
P.O. BOX 118, COLUMBUS, OHIO 43216**



# Post Abortion Care Report For Complications

Ohio Department of Health

(Required Pursuant to O.A.C. 3701-47-03)

To be completed by the physician providing post-abortion care

State Use Only

1. Facility where post-abortion care was provided:

2. Street or Post Number

City

State

Zip

3. Date of Abortion: Month Day Year

\_\_\_/\_\_\_/\_\_\_

4. Weeks of Gestation:

\_\_\_\_\_

5A. Facility where Abortion was performed:

5B Address of Facility:

Street or Post Number

City

State

Zip

6. Date Post Abortion Care Began: Month Day Year

\_\_\_/\_\_\_/\_\_\_

7. Patient Number:

\_\_\_/\_\_\_/\_\_\_/\_\_\_/\_\_\_/\_\_\_/\_\_\_/\_\_\_/\_\_\_/\_\_\_/\_\_\_/\_\_\_

8. Complication(s) (Please check all that apply):

Hemorrhage

Failure of Amniotic Fluid Ex

Infection

Anesthetic

RH Incompatibility

Incomplete Abortion

Hematometra

Cervical Laceration

Death

Perforation of Uterus

Failed Abortion

Other (Specify) \_\_\_\_\_

9. Duration of treatment: (Indicate number of hours or days)

\_\_\_\_\_ Hours \_\_\_\_\_ Days

10. Remarks:

---

---

---

---

---

---

11A. Physician's name providing care  
(Type or print)

11B. Physicians Signature:

M.D.

D.O.

Date:

Send Completed Forms to: Ohio Department of Health  
Confidential Reports A  
P O Box 118  
Columbus OH 43216

HEA 1806  
Rev 4/96