



Induced Abortions in Ohio 2011

Ohio Department of Health
John R. Kasich, Governor
Theodore E. Wymyslo, M.D., Director of Health
An equal opportunity employer/provider

Induced Abortions in Ohio, 2011

Prepared by:

**Center for Public Health Statistics and Informatics
Office of Performance Improvement**

**John Paulson
Health Services Policy Supervisor**

**Donna L. Smith
Researcher**

September, 2012

Induced Abortion Program contact Persons

Center for Public Health Statistics and Informatics

Data Analysis

John Paulson

614-644-8507

Donna L. Smith

614-466-7545

Quality Assurance

Fetal Development

Hanh Le

614-644-7726

Resources Directory on request

Office of General Counsel

Legislation

Rachel Belenker

614-466-4882

TABLE OF CONTENTS

	Induced Abortion Summary	1
Figure 1	Resident Induced Abortions, Ohio, 1976-2011	2
Figure 2	Selected characteristics of resident induced abortions in Ohio, 2011	3
Figure 3	Induced abortions reported in Ohio, by county of occurrence, 2011	4
Figure 4	Abortion ratio and abortion rate, by year, Ohio residents, 1990-2011	5
Figure 5	Induced abortion rates per 1,000 women by age, Ohio residents, 2001–2011	6
Figure 6	Induced abortion ratio, by age group, Ohio residents, 2002-2011	7
Figure 7	Total Induced abortions by weeks of gestation, by year, 1990-2011	8
Table 1	Induced Abortion Summary Table, Ohio, 2011	9
Table 2	Selected characteristics of induced abortions reported in Ohio, 1990-2011	10
Table 3	Resident induced abortions reported in Ohio, by county of residence, 1999-2011	12
Table 4	Resident induced abortions reported in Ohio, by county of residence and age, 2011	14
Table 5a	Resident induced abortions reported in Ohio, by selected counties, race, and broad age groups, 2011	16
Table 5b	Resident induced abortions reported in Ohio, by selected counties, race, and age, 2011	20
Table 6	Induced abortions reported in Ohio, by county of occurrence, 1999-2011	22
Table 7	Induced abortions reported in Ohio, by method of termination and county of occurrence, 2011	23
Table 8	Total induced abortions reported in Ohio, by gestational age, 2011	24

Table 9	Resident induced abortions reported in Ohio, by age of women obtaining Abortion and by number of prior induced abortions, 2011	25
Table 10a	Total induced abortions in Ohio with post- abortion complications, by type of complication, 2011 (Data source is ‘Confidential Abortion Reporting Form’)	26
Table 10b	Total induced abortions in Ohio with post-abortion complications, by type of complication, 2011 (Data source is ‘Post-Abortion Care Report for complications’)	27
Table 11	Total induced abortions in Ohio with post-abortion complications, by Type of complication and gestation period, 2011 (Data source is ‘Post-Abortion Care Report for Complications’)	28
Table 12	Resident Induced Abortions by Zip Code of Patient, Ohio, 2011	29
Table 13	Contraceptive history at the time of conception and contraception Recommendations provided at discharge	35
Table 14	Pregnancy history of woman who obtained induced termination in Ohio, 2011	36
Table 15	Selected medical information from confidential abortion reports, Ohio, 2011	37
Table 16	Type of counseling provided to women obtaining termination, Ohio, 2011	38
Appendix I	Confidential Abortion Report form	39
Appendix II	Post-Abortion Care Report for Complications form	40

Induced Abortion Summary

Background

Induced abortions must be reported to the Ohio Department of Health by the physician who performed the abortion, using the form “Confidential Abortion Reports.” The report includes demographic and medical history information about the woman obtaining the abortion and information about the medical procedure. These reports are used to produce statistical reports about abortions occurring in Ohio. The forms are confidential: no identifying information about women who obtain abortions is collected except the medical record number. Physicians providing post abortion care for complications are required to file a “Post Abortion Care Report for Complications.” It is not possible to link these post-abortion reports to the “Confidential Abortion Reports.” Both types of reports contain information about complications and are used to create statistical reports about post-abortion complications. This report presents information derived from both “Confidential Abortion Reports” and “Post-Abortion Care Reports for Complications” for 2011 in Ohio (reporting forms are included as Appendices I and II). The Confidential Abortion Report form was changed effective January 1, 2012, so this report will be the final report derived from the previous reporting form.

Characteristics of Induced Abortions Reported in Ohio, 2011

Induced abortion statistics are available for Ohio dating back to 1976. In 1994 the reporting form was improved. Many trend comparisons in this summary date back to 1996. We also compare the 2010 abortions to 2011 occurrences to show more recent trend developments.

A total of 24,764 induced pregnancy terminations were reported in Ohio for 2011, including 23,250 for Ohio residents (93.9%). The total number of abortions performed in Ohio has declined annually since 2000. (Figure 1) There were 3,359 fewer reported terminations in 2011 compared to 2010, which represents a 12% decline in that period. That decline is larger in magnitude than we have seen in recent years. The decline in medical non-surgical procedures figures into the overall drop in abortions in 2011.

Approximately one sixth of women who obtained abortions were under 20 years of age, with another third between the ages of 20-24 years of age (figure 2). The age distribution of women obtaining abortions has remained fairly unchanged since 1994. Approximately 86% of women who obtained an abortion were never married, divorced, or widowed. 14% of procedures were obtained by married or separated women. The marital status distribution has remained constant since 1994. Fifty-seven percent of resident women who obtained abortions and for whom race was reported were White, 39% were African American, and 3% were other races. Four percent of abortions were obtained by women of Hispanic origin.

The 2011 Ohio abortion rate was 11.1 per 1,000 women ages 15-44 years (figure 4). The most recent comparable rate for the US was higher at 16 per 1,000 women (year 2008). The 2011 Ohio abortion ratio was 181 abortions per 1,000 live births, down from 190 in 2010. Ohio’s abortion ratio is also lower than the 2008 US abortion ratio of 234 abortions per 1,000 live births.

Over half of all induced abortions involved pregnancies of less than 9 weeks (57%), with approximately 28% involving pregnancies of 9-12 weeks (figure 2). The proportion involving abortions of less than 9 weeks increased from 42% in 1995, while the proportion between 9 and 12 weeks declined from 40% to 28% (figure 7). There were 525 abortions involving pregnancies of 20 or more weeks, a number that decreased from 915 in 1997. The vast majority of reported abortions were obtained in six major metropolitan areas of Ohio.

There were changes between 2002 and 2011 in method of termination for induced abortions performed in Ohio. Curettage remained the most frequent method of termination at 83% in 2011. That method has decreased since 2001, when 87% of terminations were by curettage. Dilation and evacuation was the next most common type of procedure at 9.2%. We experienced a large decline in medical/non-surgical procedures between 2010 and 2011 (5,862 down to 1,234). We are not sure if this decline represents a shift to other procedures or if it represents under-reporting of abortions among providers who provide this type of abortion care. Beginning with 2012 abortion reports we will be able to examine specific drug types as these are requested on the new form.

Figure 1. Resident induced abortions, Ohio, 1976 – 2011

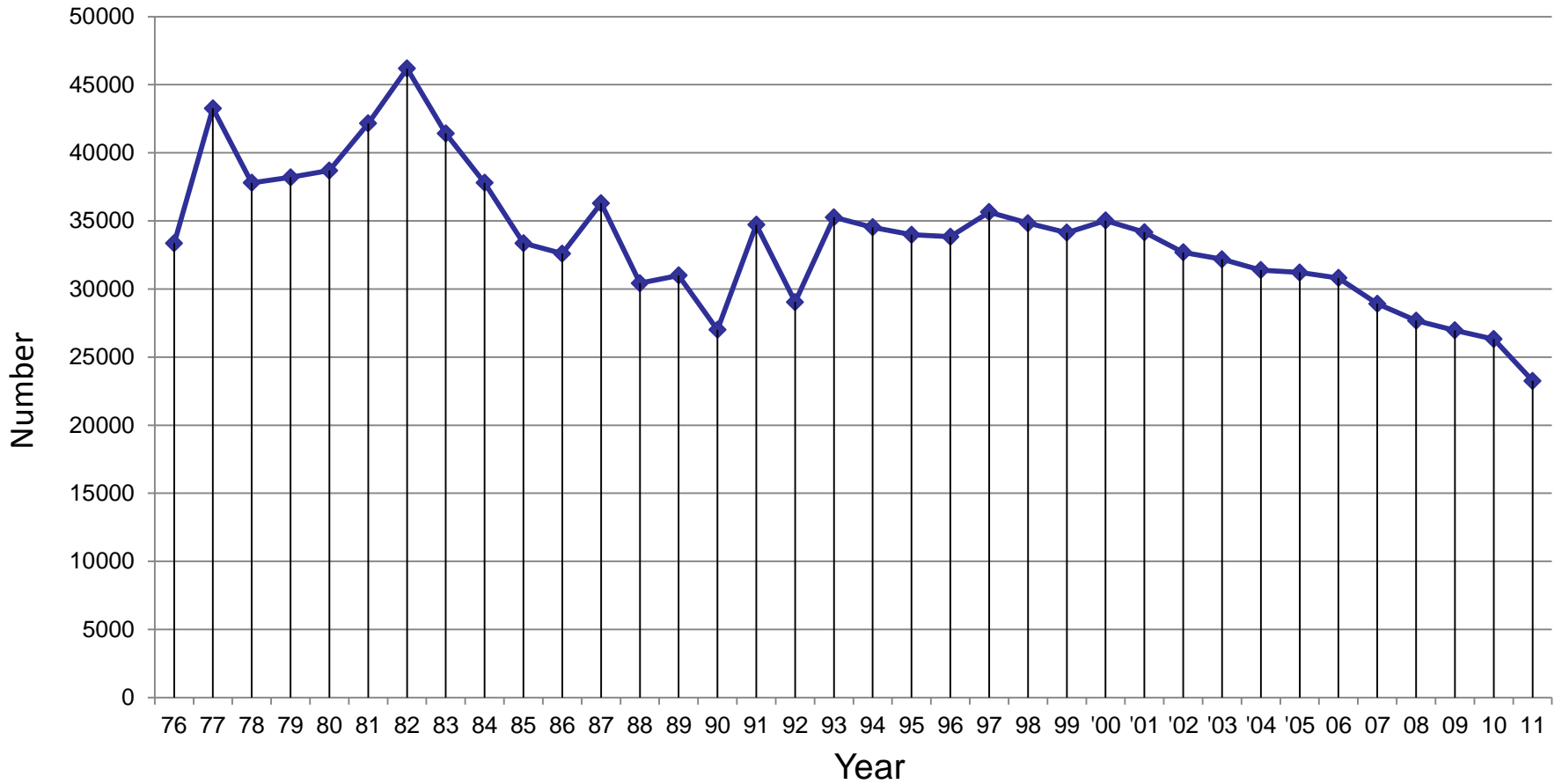
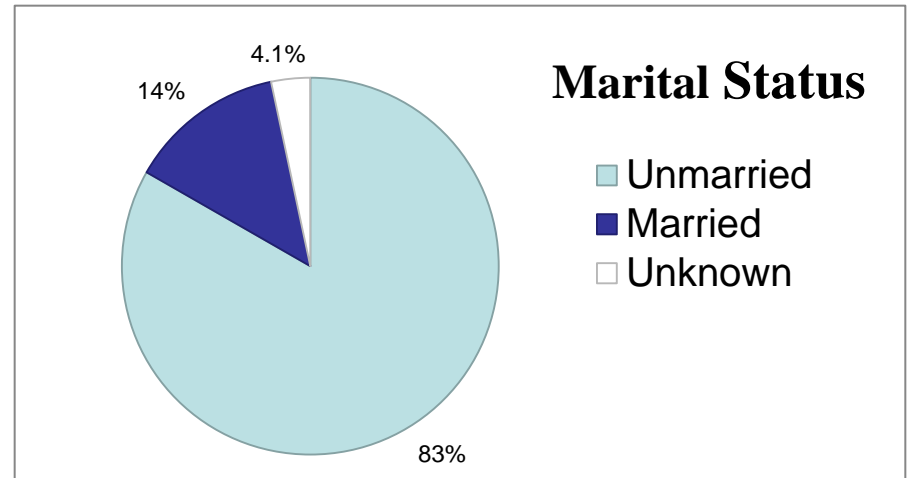
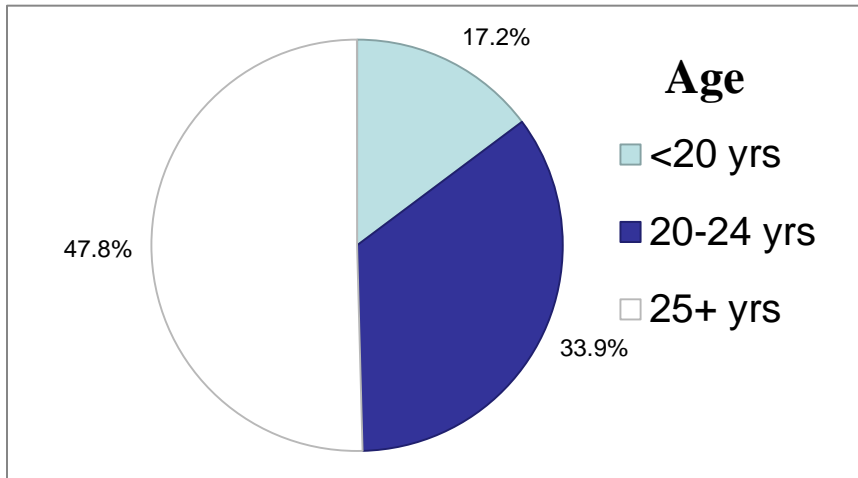
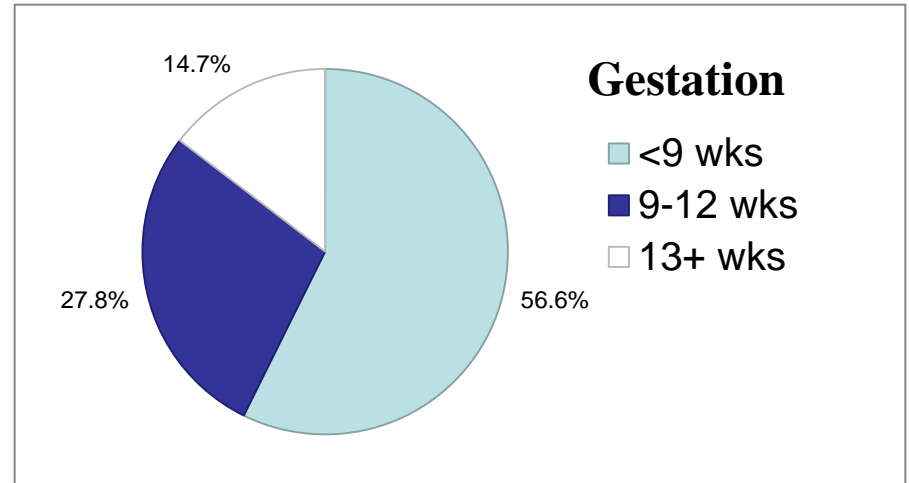
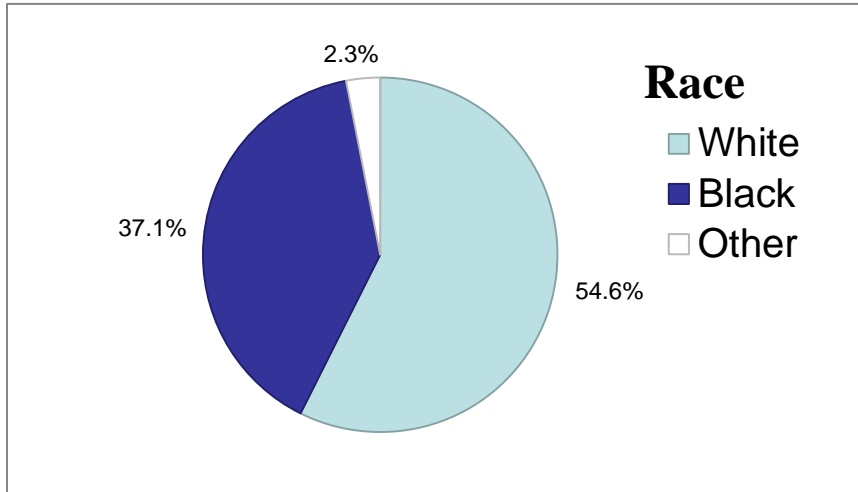


Figure 2. Selected characteristics of resident induced abortions in Ohio, 2011



Excludes Unknown unless otherwise stated

Figure 3. Induced abortions reported in Ohio, by county of occurrence, 2011

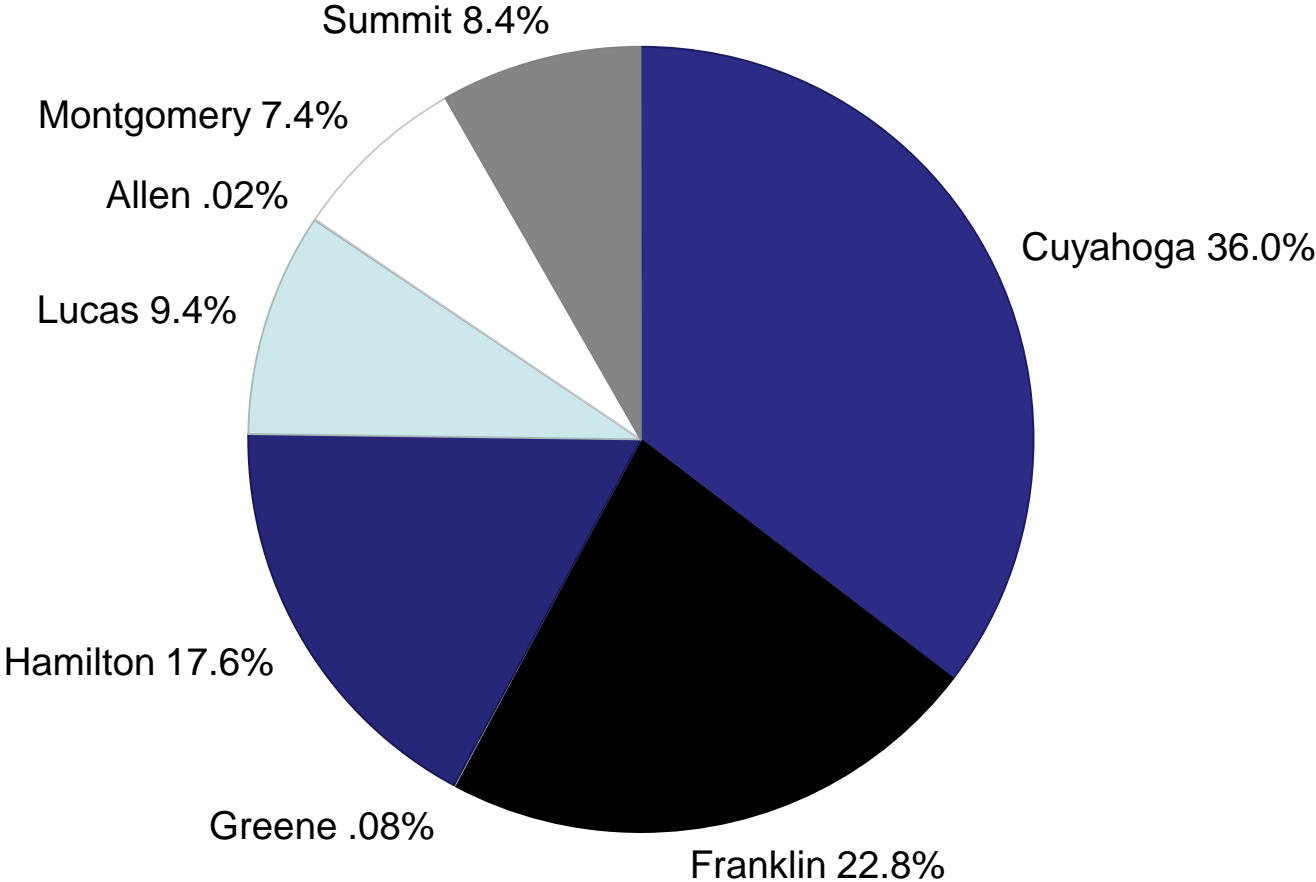
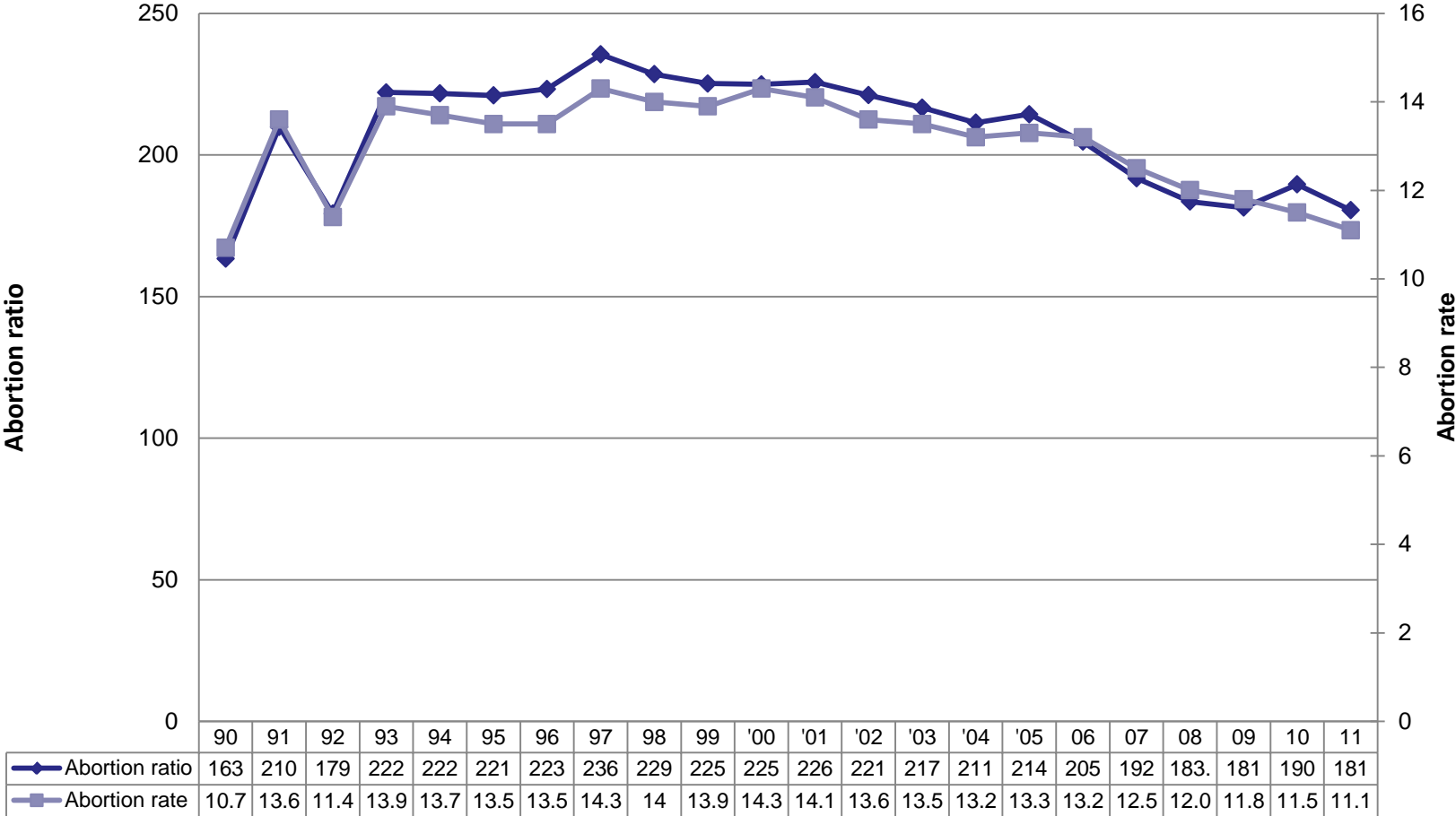
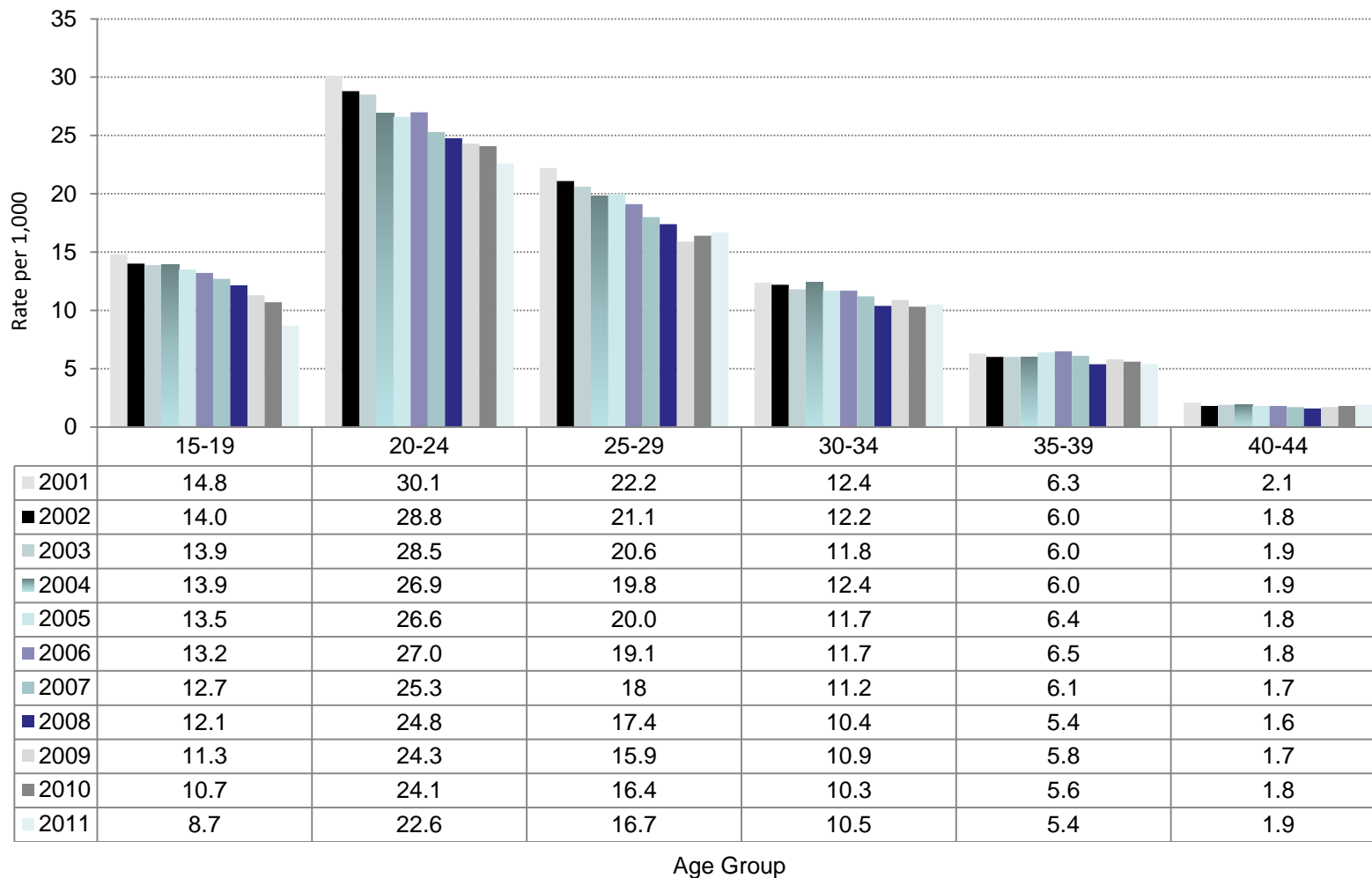


Figure 4. Abortion ratio and abortion rate, by year, Ohio residents, 1990 - 2011



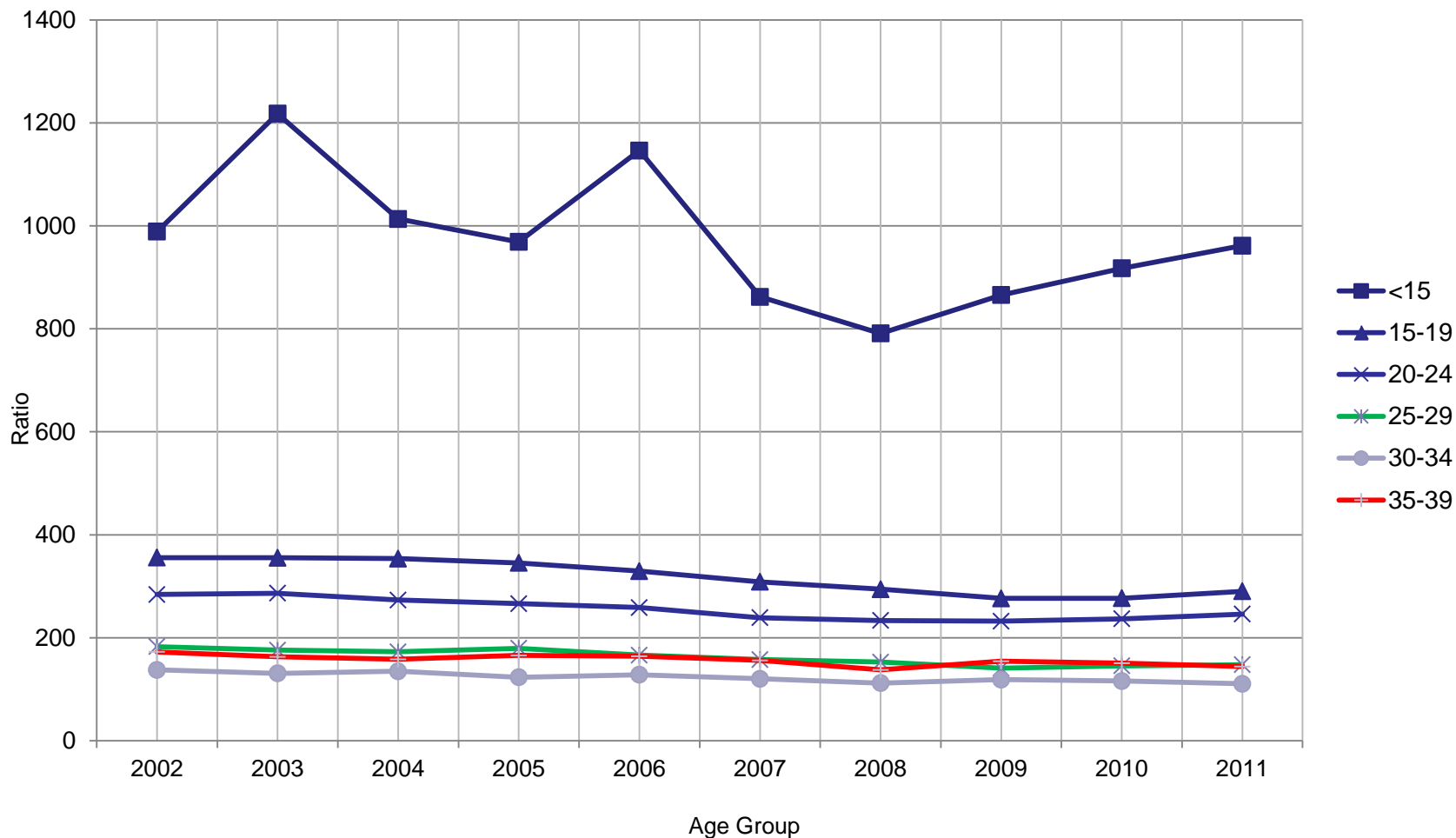
Abortion ratio is number of abortions per 1,000 live births.
 Abortion rate is number of abortions per 1,000 women ages 15-44.

Figure 5. Induced abortion rates per 1,000 women by age, Ohio residents, 2001 - 2011



Abortion rate is number of abortions per 1,000 female population in specified age group.

Figure 6. Induced abortion ratio, by age group, Ohio residents, 2002 - 2011



Abortion ratio is number of abortions per 1,000 live births in specified age group

Figure 7. Total Induced abortions by weeks of gestation, by year, 1990-2011

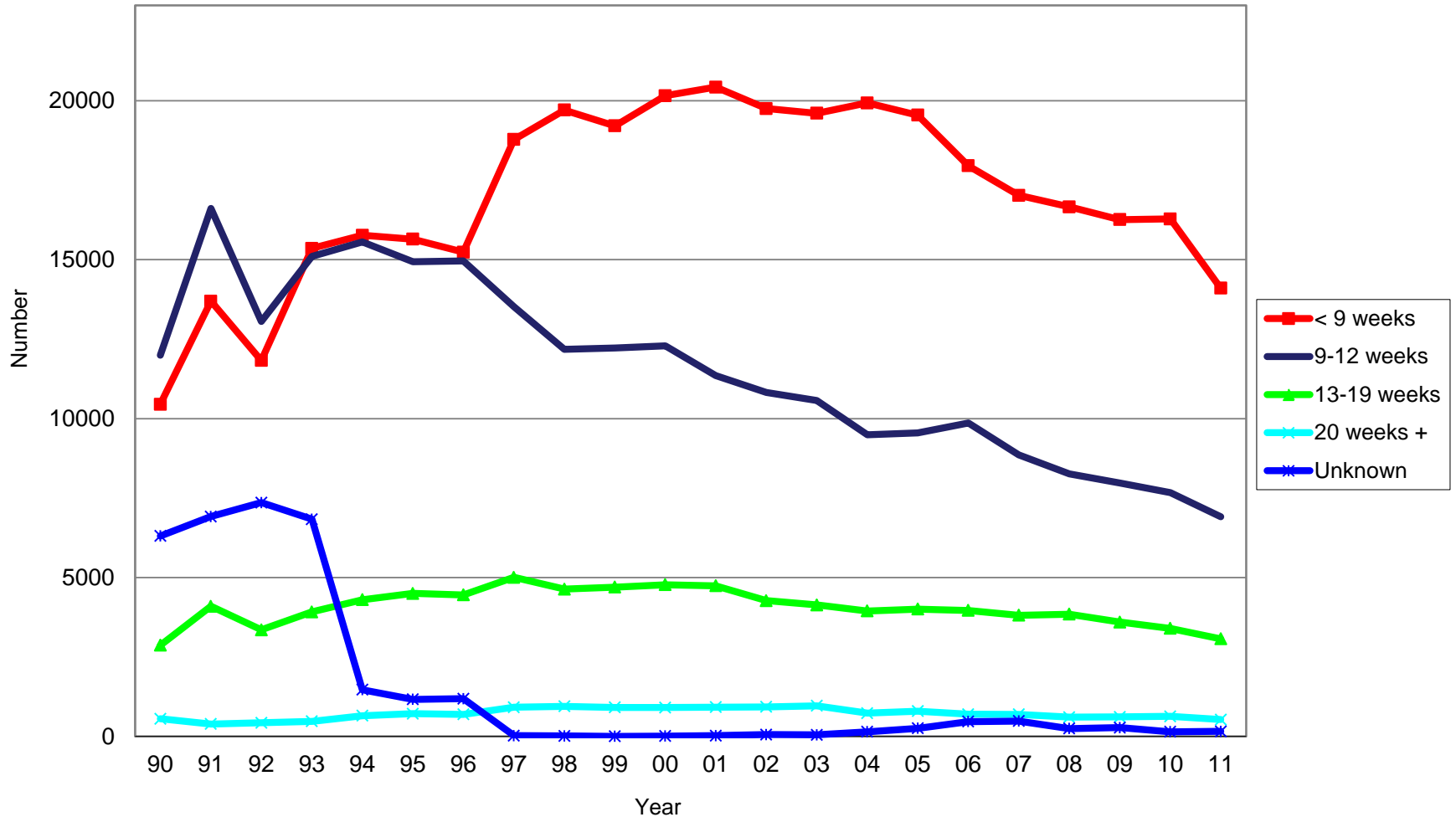


TABLE 1

INDUCED ABORTION SUMMARY TABLE, OHIO, 2011

CHARACTERISTICS	NUMBER	PERCENT
TOTAL INDUCED ABORTIONS	24,764	100.0
RESIDENCE:		
Ohio Resident	23,250	93.9
Out-of-State Resident	1,514	6.1
AGE:		
Under 20 Years	3,624	14.6
20-24 Years	8,545	34.5
25 Years and Over	12,381	50.0
Age Not Reported	214	0.9
RACE GROUP:		
White	13,340	53.9
Black	9,178	37.1
American Indian	110	0.4
Asian/Pacific Islander	610	2.5
Other/Unknown	1,526	6.2
HISPANIC:		
Non-Hispanic	23,590	95.3
Hispanic	963	3.9
Unknown	211	0.9
LEVEL OF EDUCATION:		
Less than Grade 9	342	1.4
Grade 9-12	15,155	61.2
1-2 Yrs College	4,537	18.3
3-4 Yrs College	3,586	14.5
5+ Yrs College	666	2.7
Unknown	478	1.9
MARITAL STATUS:		
Married <u>1</u> /	3,313	13.4
Unmarried <u>2</u> /	20,625	83.3
Not Reported	826	3.3
NUMBER OF LIVING CHILDREN:		
None	7,657	0.0
One	6,658	30.9
Two or More	8,577	61.5
Not Reported	1,872	7.6
WEEKS OF GESTATION:		
Less than 9 Weeks	14,105	57.0
9-12 Weeks	6,909	27.9
13 Weeks and Over	3,593	14.5
Not Reported	157	0.6

1/ Includes Separated2/ Includes Never Married, Divorced, Widowed

TABLE 2

SELECTED CHARACTERISTICS OF INDUCED ABORTIONS REPORTED IN OHIO, 1999-2011

Characteristic	2011	2010	2009	2008	2007	2006	2005	2004	2003	2002	2001	2000	1999
<u>NUMBER OF ABORTIONS</u>													
TOTAL INDUCED ABORTIONS	24,764	28,123	28,721	29,613	30,859	32,936	34,128	34,242	35,319	35,830	37,464	38,140	37,041
RESIDENCE:													
Ohio Resident	23,250	26,322	26,959	27,672	28,921	30,809	31,210	31,391	32,180	32,687	34,174	35,022	34,134
Out-of-State Resident	1,511	1,801	1,762	1,941	1,938	2,127	2,918	2,851	3,139	3,143	3,290	3,118	2,907
AGE:													
Under 15 Years	125	182	190	188	207	292	240	253	292	277	286	314	279
15-19 Years	3,499	4,509	4,743	5,144	5,376	5,603	5,817	5,911	6,014	6,098	6,485	6,860	6,997
20-24 Years	8,545	9,562	9,739	9,945	10,182	11,123	11,502	11,772	12,441	12,370	12,710	13,029	12,391
25-29 Years	6,014	6,636	6,547	7,192	7,355	7,720	7,968	7,655	7,836	7,984	8,531	8,885	8,774
30-34 Years	3,640	3,937	4,021	3,835	4,081	4,333	4,687	4,875	4,980	5,205	5,299	5,073	4,797
35-39 Years	1,949	2,244	2,389	2,245	2,535	2,741	2,708	2,589	2,660	2,775	2,956	2,957	2,857
40-44 Years	730	752	716	723	755	845	874	910	938	906	1,064	948	883
45 Years & Older	48	43	50	53	53	53	73	68	55	61	114	53	37
Unknown	214	258	326	288	315	226	259	209	103	154	19	21	26
EDUCATION:													
Less than Grade 9	342	445	533	479	579	662	653	675	756	755	797	612	493
Grade 9-12	15,155	17,276	17,830	18,389	18,880	20,515	20,911	21,222	22,359	22,742	23,834	24,281	23,287
1 Or More College Years	8,789	9,857	8,956	10,105	10,719	11,064	11,810	11,763	11,924	11,893	12,593	12,823	11,919
None/Not Reported	478	545	685	640	681	695	754	582	280	440	240	424	1,342
RACE:													
White	13,340	15,127	15,683	16,019	17,221	18,724	19,673	19,952	20,717	20,934	22,045	22,581	22,143
Black	9,178	10,528	10,647	11,064	11,073	11,683	12,070	12,028	12,463	12,689	13,160	13,480	12,680
Asian/Pacific Islander	610	654	610	600	693	695	723	731	731	740	775	782	720
Other/Unknown/Not Reported	1,636	1,814	1,781	1,930	1,872	1,834	1,662	1,531	1,418	1,467	1,484	1,297	1,498
MARITAL STATUS:													
Never Married	19,224	21,876	22,078	22,630	23,157	24,571	25,595	25,489	26,263	26,140	27,276	27,460	25,944
Married	2,632	2,813	2,990	3,172	3,621	3,936	4,199	4,366	4,737	4,720	5,058	5,245	4,928
Separated	681	716	781	749	881	990	1,080	1,146	1,148	1,215	1,381	1,374	1,334
Divorced	1,334	1,558	1,630	1,712	1,826	2,174	2,296	2,462	2,663	2,892	3,104	3,300	3,350
Widowed	67	59	71	66	88	72	72	88	89	100	110	126	101
Unknown	826	1,101	1,171	1,284	1,286	1,193	886	691	419	763	535	635	1,384
NUMBER OF LIVING CHILDREN:													
No Children	7,657	9,598	9,890	10,211	10,974	11,488	9,415	9,007	9,913	10,154	10,866	11,103	11,480
One Child	6,658	7,578	7,932	8,210	8,499	9,040	9,505	9,535	9,805	9,970	10,719	11,006	10,650
Two or more Children	8,577	9,709	9,888	10,093	10,233	10,899	11,263	11,515	11,800	12,179	12,638	12,679	12,030
Unknown	1,872	1,238	1,011	1,099	1,153	1,519	3,945	4,185	3,801	3,527	3,241	3,352	2,881
WEEKS OF GESTATION:													
Less than 9 Weeks	14,105	16,283	16,264	16,663	17,023	17,955	19,549	19,933	19,610	19,755	20,432	20,161	19,212
9 - 12 Weeks	6,909	7,672	7,971	8,257	8,855	9,862	9,547	9,489	10,570	10,820	11,350	12,293	12,221
13 - 19 Weeks	3,068	3,397	3,597	3,845	3,811	3,963	4,006	3,944	4,133	4,271	4,738	4,772	4,695
20 Weeks and Over	525	629	613	603	690	694	793	731	961	929	921	906	912
Unknown	157	142	276	245	480	462	253	145	45	55	23	8	1

Table 2. Induced Abortions, 1999-2011 (page 2)

Characteristic	2011	2010	2009	2008	2007	2006	2005	2004	2003	2002	2001	2000	1999
<u>PERCENTAGE DISTRIBUTION</u>													
TOTAL INDUCED ABORTIONS	100.0	100.0	100.0	100.0	100.0	100.0	100.0	100.0	100.0	100.0	100.0	100.0	100.0
RESIDENCE:													
Ohio Resident	93.9	93.6	93.9	93.4	93.7	93.5	91.4	91.7	91.1	91.2	91.2	91.8	92.2
Out-of-State Resident	6.1	6.4	6.1	6.6	6.3	6.5	8.6	8.3	8.9	8.8	8.8	8.2	7.8
AGE:													
Under 15 Years	0.5	0.6	0.7	0.6	0.7	0.9	0.7	0.7	0.8	0.8	0.8	0.8	0.8
15-19 Years	14.1	16.0	16.5	17.4	17.4	17.0	17.0	17.3	17.0	17.0	17.3	18.0	18.9
20-24 Years	34.5	34.0	33.9	33.6	33.0	33.8	33.7	34.4	35.2	34.5	33.9	34.2	33.5
25-29 Years	24.3	23.6	22.8	24.3	23.8	23.4	23.3	22.4	22.2	22.3	22.8	23.3	23.7
30-34 Years	14.7	14.0	14.0	13.0	13.2	13.2	13.7	14.2	14.1	14.5	14.1	13.3	13.0
35-39 Years	7.9	8.0	8.3	7.6	8.2	8.3	7.9	7.6	7.5	7.7	7.9	7.8	7.7
40-44 Years	2.9	2.7	2.5	2.4	2.4	2.6	2.6	2.7	2.7	2.5	2.8	2.5	2.4
45 Years & Older	0.2	0.2	0.2	0.2	0.2	0.2	0.2	0.2	0.2	0.2	0.3	0.1	0.1
Unknown	0.9	0.9	1.1	1.0	1.0	0.7	0.8	0.6	0.3	0.4	0.1	0.1	0.1
EDUCATION:													
Less than Grade 9	1.4	1.6	1.9	1.6	1.9	2.0	1.9	2.0	2.1	2.1	2.1	1.6	1.3
Grade 9-12	61.2	61.4	62.1	62.1	61.2	62.3	61.3	62.0	63.3	63.5	63.6	63.7	62.9
1 Or More College Years	35.5	35.0	31.2	34.1	34.7	33.6	34.6	34.4	33.8	33.2	33.6	33.6	32.2
None/Not Reported	1.9	1.9	2.4	2.2	2.2	2.1	2.2	1.7	0.8	1.2	0.6	1.1	3.6
RACE:													
White	53.9	53.8	54.6	54.1	55.8	56.8	57.6	58.3	58.7	58.4	58.8	59.2	59.8
Black	37.1	37.4	37.1	37.4	35.9	35.5	35.4	35.1	35.3	35.4	35.1	35.3	34.2
Asian/Pacific Islander	2.5	2.3	2.1	2.0	2.2	2.1	2.1	2.1	2.1	2.1	2.1	2.1	1.9
Other/Unknown/Not Reported	6.6	6.5	6.2	6.5	6.1	5.6	4.9	4.5	4.0	4.1	4.0	3.4	4.0
MARITAL STATUS:													
Never Married	77.6	77.8	76.9	76.4	75.0	74.6	75.0	74.4	74.4	73.0	72.8	72.0	70.0
Married	10.6	10.0	10.4	10.7	11.7	12.0	12.3	12.8	13.4	13.2	13.5	13.8	13.3
Separated	2.7	2.5	2.7	2.5	2.9	3.0	3.2	3.3	3.3	3.4	3.7	3.6	3.6
Divorced	5.4	5.5	5.7	5.8	5.9	6.6	6.7	7.2	7.5	8.1	8.3	8.7	9.0
Widowed	0.3	0.2	0.2	0.2	0.3	0.2	0.2	0.3	0.3	0.3	0.3	0.3	0.3
Unknown	3.3	3.9	4.1	4.3	4.2	3.6	2.6	2.0	1.2	2.1	1.4	1.7	3.7
NUMBER OF LIVING CHILDREN:													
No Children	30.9	34.1	34.4	34.5	35.6	34.9	27.6	26.3	28.1	28.3	29.0	29.1	31.0
One Child	26.9	26.9	27.6	27.7	27.5	27.4	27.9	27.8	27.8	27.8	28.6	28.9	28.8
Two or more Children	34.6	34.5	34.4	34.1	33.2	33.1	33.0	33.6	33.4	34.0	33.7	33.2	32.5
Unknown	7.6	4.4	3.5	3.7	3.7	4.6	11.6	12.2	10.8	9.8	8.7	8.8	7.8
WEEKS OF GESTATION:													
Less than 9 Weeks	57.0	57.9	56.6	56.3	55.2	54.5	57.3	58.2	55.5	55.1	54.5	52.9	51.9
9 - 12 Weeks	27.9	27.3	27.8	27.9	28.7	29.9	28.0	27.7	29.9	30.2	30.3	32.2	33.0
13 - 19 Weeks	12.4	12.1	12.5	13.0	12.3	12.0	11.7	11.5	11.7	11.9	12.6	12.5	12.7
20 Weeks and Over	2.1	2.2	2.1	2.0	2.2	2.1	2.3	2.1	2.7	2.6	2.5	2.4	2.5
Unknown	0.6	0.5	1.0	0.8	1.6	1.4	0.7	0.4	0.1	0.2	0.1	0.0	0.0

TABLE 3

RESIDENT INDUCED ABORTIONS REPORTED IN OHIO, BY COUNTY OF RESIDENCE, 1999-2011

Residence	2011	2010	2009	2008	2007	2006	2005	2004	2003	2002	2001	2000	1999
OHIO	23,250	26,322	26,955	27,672	28,921	30,809	31,210	31,391	32,180	32,687	34,174	35,022	34,134
ADAMS	17	22	20	16	14	28	22	15	18	15	16	22	24
ALLEN	146	191	173	129	121	153	206	190	159	166	153	165	176
ASHLAND	42	47	53	45	52	48	61	57	64	47	67	69	74
ASHTABULA	157	175	200	149	185	208	187	216	214	228	228	222	195
ATHENS	83	109	112	101	112	100	111	123	121	119	113	131	163
AUGLAIZE	28	28	28	36	32	42	34	37	47	39	47	54	51
BELMONT	7	18	13	12	27	28	40	29	30	24	25	41	26
BROWN	32	37	36	42	48	41	55	44	46	67	63	71	75
BUTLER	559	690	707	754	720	775	816	843	771	773	796	769	854
CARROLL	28	23	34	32	35	25	23	34	32	35	38	40	36
CHAMPAIGN	33	44	45	49	48	57	55	63	52	45	58	74	61
CLARK	202	232	198	245	219	263	282	279	331	300	342	357	319
CLERMONT	233	258	293	321	289	293	317	326	326	344	385	395	429
CLINTON	40	40	63	62	48	46	49	45	60	74	76	74	75
COLUMBIANA	86	100	124	125	157	135	188	179	162	220	202	189	178
COSHOCTON	20	19	31	20	35	28	37	32	43	35	26	34	36
CRAWFORD	33	32	46	41	33	42	48	55	45	58	58	74	70
CUYAHOGA	5,828	6,598	6,794	7,056	6,986	7,252	7,412	7,565	7,889	8,466	8,644	8,906	8,790
DARKE	27	32	28	36	44	48	32	47	47	61	45	44	54
DEFIANCE	33	34	38	28	26	48	23	37	37	37	35	43	32
DELAWARE	164	144	140	135	174	188	207	171	169	142	130	178	117
ERIE	101	161	157	139	160	147	209	170	183	209	227	220	216
FAIRFIELD	149	163	157	155	205	184	208	204	184	185	179	184	193
FAYETTE	26	37	32	29	32	33	48	41	43	27	49	44	36
FRANKLIN	3,529	3,448	3,604	3,526	4,381	4,683	4,601	4,678	4,684	4,290	4,645	4,764	4,056
FULTON	42	35	28	41	39	42	49	41	36	43	52	48	75
GALLIA	10	6	16	5	17	18	9	17	12	15	15	19	19
GAUGA	89	94	104	106	113	131	128	139	121	152	135	161	148
GREENE	218	267	290	274	306	320	282	314	311	322	306	379	321
GUERNSEY	22	45	23	42	58	46	27	49	46	61	44	59	66
HAMILTON	2,374	2,785	2,728	3,125	2,990	3,112	2,999	3,172	3,046	3,374	3,559	3,578	3,593
HANCOCK	51	76	90	105	86	125	129	120	115	121	109	118	126
HARDIN	22	20	32	23	29	28	32	47	35	28	36	29	40
HARRISON	6	10	10	7	14	6	9	6	9	13	10	15	12
HENRY	17	28	32	27	24	42	31	34	28	29	23	32	42
HIGHLAND	24	38	45	38	51	44	41	50	53	49	44	46	60
HOCKING	26	26	18	28	33	33	44	26	26	29	25	34	30
HOLMES	16	22	25	9	19	15	22	18	19	21	22	20	12
HURON	59	64	81	60	79	94	77	79	77	101	123	118	102
JACKSON	23	24	24	13	30	27	35	28	34	26	35	27	32
JEFFERSON	9	9	15	13	15	26	38	17	25	23	30	23	24
KNOX	43	59	54	45	72	77	55	66	64	67	65	65	54
LAKE	460	492	479	516	525	544	596	571	592	598	654	563	624
LAWRENCE	6	16	11	15	8	16	20	15	32	21	18	10	18

TABLE 3. Resident Induced Abortions, 1999-2011 (Page 2)

Residence	2011	2010	2009	2008	2007	2006	2005	2004	2003	2002	2001	2000	1999
LICKING	205	203	201	186	252	238	250	259	257	258	259	269	268
LOGAN	23	38	51	45	42	64	48	50	55	59	60	78	78
LORAIN	570	695	679	699	726	692	760	812	841	746	910	878	837
LUCAS	1,239	1,565	1,565	1,434	1,356	1,803	1,633	1,603	1,566	1,481	1,558	1,600	1,673
MADISON	35	53	46	34	54	48	75	49	53	49	66	55	67
MAHONING	422	528	572	630	713	702	791	759	845	847	847	892	827
MARION	69	69	68	71	93	84	101	75	73	74	78	95	107
MEDINA	210	223	293	266	270	278	292	306	322	301	318	313	289
MEIGS	7	13	5	19	12	7	8	12	14	16	8	14	11
MERCER	20	27	24	19	18	31	31	36	17	44	43	46	41
MIAMI	107	120	113	122	119	146	139	163	158	142	158	175	170
MONROE	22	46	41	20	11	35	44	15	10	11	13	10	15
MONTGOMERY	1,096	1,367	1,394	1,439	1,420	1,616	1,531	1,632	1,709	1,807	2,072	2,138	2,158
MORGAN	4	10	10	5	7	6	7	4	10	12	9	17	13
MORROW	32	28	27	29	34	34	45	33	33	37	39	27	35
MUSKINGUM	81	85	102	75	100	99	112	127	122	79	105	118	126
NOBLE	9	8	6	2	11	9	2	5	6	5	8	11	13
OTTAWA	37	47	32	39	48	69	63	56	58	69	65	67	67
PAULDING	3	7	8	7	12	9	10	7	3	9	5	8	10
PERRY	41	33	21	22	32	44	40	34	35	32	41	41	43
PICKAWAY	39	50	67	52	76	72	46	71	64	52	57	62	66
PIKE	19	26	15	15	27	27	20	27	19	22	31	26	16
PORTAGE	325	354	367	379	360	374	414	429	467	422	447	430	447
PREBLE	29	33	32	53	46	56	45	38	44	52	56	64	69
PUTNAM	17	20	27	19	14	21	14	25	20	20	24	29	26
RICHLAND	161	156	170	194	177	188	217	184	196	216	212	231	209
ROSS	57	83	79	86	94	87	98	107	95	103	103	108	118
SANDUSKY	72	96	110	106	79	94	91	101	92	98	118	119	120
SCIOTO	53	47	61	57	60	65	68	74	85	61	66	81	62
SENECA	53	55	73	56	50	76	73	65	72	73	86	108	94
SHELBY	34	45	45	27	53	54	59	54	74	53	54	87	59
STARK	634	745	771	752	840	831	859	795	862	900	819	851	865
SUMMIT	1,352	1,428	1,469	1,601	1,660	1,742	1,798	1,677	1,889	1,870	1,882	1,810	1,840
TRUMBULL	339	370	382	445	501	504	536	493	595	633	628	683	559
TUSCARAWAS	97	109	97	132	121	115	156	135	170	139	153	130	158
UNION	45	58	49	52	59	55	52	59	63	55	66	68	53
VAN WERT	0	0	0	7	9	14	17	13	12	15	9	17	10
VINTON	9	5	12	8	8	11	13	11	14	14	17	14	8
WARREN	216	265	244	270	272	251	253	246	269	266	287	265	271
WASHINGTON	18	28	23	22	27	33	28	25	37	28	41	36	31
WAYNE	121	115	125	142	115	162	153	128	139	145	136	139	150
WILLIAMS	22	35	31	33	32	34	40	34	28	20	33	32	41
WOOD	172	222	203	204	207	267	255	254	232	238	211	250	255
WYANDOT	14	14	18	22	13	21	29	20	17	15	24	22	25

TABLE 4

RESIDENT INDUCED ABORTIONS REPORTED IN OHIO, BY COUNTY AND AGE, 2011

Residence	Total	Age Group												Unk.
		<15	15	16	17	18	19	20-24	25-29	30-34	35-39	40-44	45+	
OHIO TOTAL	23,250	120	196	343	525	989	1,233	8,046	5,653	3,406	1,830	673	40	196
ADAMS	17	0	0	0	0	4	2	5	4	1	0	1	0	0
ALLEN	146	1	1	3	6	5	8	57	38	15	7	4	0	1
ASHLAND	42	0	0	1	1	3	1	19	8	8	1	0	0	0
ASHTABULA	157	0	1	0	2	11	15	57	30	22	10	8	0	1
ATHENS	83	0	0	0	1	5	7	45	14	2	8	1	0	0
AUGLAIZE	28	1	1	1	0	2	0	8	11	0	2	0	0	2
BELMONT	7	0	0	0	0	0	1	3	1	0	1	0	0	1
BROWN	32	0	2	3	1	3	1	5	7	4	4	2	0	0
BUTLER	559	3	7	11	12	16	31	182	134	101	38	20	0	4
CARROLL	28	0	1	4	4	0	0	7	7	3	2	0	0	0
CHAMPAIGN	33	0	0	0	1	0	0	17	5	4	5	1	0	0
CLARK	202	1	4	2	8	15	14	72	42	27	12	2	0	3
CLERMONT	233	1	3	3	4	6	14	78	70	24	22	6	1	1
CLINTON	40	0	1	0	1	2	3	13	7	8	3	2	0	0
COLUMBIANA	86	0	1	1	2	4	4	31	20	9	9	4	0	1
COSHOCTON	20	0	1	0	1	2	1	6	3	4	1	0	0	1
CRAWFORD	33	1	1	2	2	2	4	7	11	1	2	0	0	0
CUYAHOGA	5,828	27	45	86	114	254	323	1,914	1,481	879	493	161	7	44
DARKE	27	0	0	0	1	6	1	9	5	3	2	0	0	0
DEFIANCE	33	0	0	2	1	1	4	10	5	4	3	0	1	2
DELAWARE	164	0	3	1	4	5	5	57	30	30	21	7	1	0
ERIE	101	0	0	2	0	3	10	32	26	15	10	2	0	1
FAIRFIELD	149	0	1	2	9	11	3	48	42	17	9	4	0	3
FAYETTE	26	1	1	0	0	2	1	9	7	3	2	0	0	0
FRANKLIN	3,529	13	19	42	66	114	152	1,244	930	550	267	98	8	26
FULTON	42	0	0	0	1	3	2	20	9	2	2	2	1	0
GALLIA	10	0	0	1	0	2	1	3	0	1	1	0	0	1
GEAUGA	89	0	0	0	4	4	4	30	19	18	6	4	0	0
GREENE	218	0	1	2	2	7	12	98	49	26	15	6	0	0
GUERNSEY	22	0	0	1	1	2	2	5	7	3	1	0	0	0
HAMILTON	2,374	15	16	30	53	81	110	821	608	386	178	54	3	19
HANCOCK	51	0	0	2	0	1	4	21	10	6	5	2	0	0
HARDIN	22	0	0	0	1	1	0	9	5	2	4	0	0	0
HARRISON	6	0	0	0	0	1	0	4	0	1	0	0	0	0
HENRY	17	0	0	1	2	1	0	4	5	3	0	0	1	0
HIGHLAND	24	0	0	0	0	3	2	6	9	3	1	0	0	0
HOCKING	26	1	3	0	0	1	3	8	5	3	1	1	0	0
HOLMES	16	0	0	0	0	1	0	4	5	4	2	0	0	0
HURON	59	1	0	1	1	0	3	22	13	11	3	2	0	2
JACKSON	23	0	0	0	0	4	1	9	3	3	3	0	0	0
JEFFERSON	9	0	0	0	0	2	0	2	2	0	3	0	0	0
KNOX	43	1	0	1	1	1	3	17	13	2	2	2	0	0
LAKE	460	2	2	7	13	20	15	154	109	76	31	26	0	5
LAWRENCE	6	0	0	0	0	0	0	3	0	1	2	0	0	0

TABLE 4. RESIDENT INDUCED ABORTIONS REPORTED IN OHIO, BY COUNTY AND AGE, 2011 (Page 2)

Residence	Total	Age Group											Unk.	
		<15	15	16	17	18	19	20-24	25-29	30-34	35-39	40-44		45+
LICKING	205	0	0	4	8	10	12	68	52	19	21	9	1	1
LOGAN	23	0	0	0	1	0	2	9	5	4	2	0	0	0
LORAIN	570	4	7	13	18	26	34	177	123	91	45	28	1	3
LUCAS	1,239	10	8	18	32	61	73	493	277	154	69	19	2	23
MADISON	35	1	0	2	1	4	2	10	7	6	1	1	0	0
MAHONING	422	5	4	7	11	10	23	151	105	60	29	11	3	3
MARION	69	1	0	2	2	1	5	30	17	5	6	0	0	0
MEDINA	210	1	2	5	3	9	10	66	43	32	24	11	1	3
MEIGS	7	0	0	0	1	1	0	2	1	2	0	0	0	0
MERCER	20	0	1	0	0	2	1	6	6	2	1	1	0	0
MIAMI	107	0	2	3	5	5	6	37	19	17	9	4	0	0
MONROE	22	0	0	0	0	3	3	10	1	2	2	1	0	0
MONTGOMERY	1,096	5	12	12	19	40	56	391	274	162	93	23	2	7
MORGAN	4	0	0	0	0	0	0	0	0	3	1	0	0	0
MORROW	32	0	0	1	0	1	1	8	7	6	7	1	0	0
MUSKINGUM	81	0	0	0	1	6	3	31	24	10	5	1	0	0
NOBLE	9	0	0	0	0	0	3	3	2	0	1	0	0	0
OTTAWA	37	0	0	0	1	2	1	13	10	6	4	0	0	0
PAULDING	3	0	0	0	0	0	0	0	1	1	1	0	0	0
PERRY	41	0	0	0	1	0	4	11	10	9	5	1	0	0
PICKAWAY	39	0	2	0	1	1	5	9	9	6	3	3	0	0
PIKE	19	0	0	1	2	1	2	7	4	0	1	1	0	0
PORTAGE	325	2	4	2	9	13	22	150	50	38	23	9	0	3
PREBLE	29	0	1	0	1	2	2	9	6	3	1	4	0	0
PUTNAM	17	0	0	1	0	0	1	8	5	0	1	1	0	0
RICHLAND	161	1	0	1	5	7	6	62	30	25	19	5	0	0
ROSS	57	2	2	0	0	5	2	24	11	6	4	1	0	0
SANDUSKY	72	0	0	3	2	6	2	23	18	13	0	5	0	0
SCIOTO	53	0	1	2	1	5	4	18	11	6	2	3	0	0
SENECA	53	0	0	1	4	3	3	18	8	10	5	1	0	0
SHELBY	34	0	0	0	0	1	1	10	12	6	3	1	0	0
STARK	634	2	12	12	18	38	38	222	137	78	47	22	1	7
SUMMIT	1,352	4	12	22	34	66	81	469	318	179	96	46	5	20
TRUMBULL	339	4	3	6	9	10	17	99	94	48	36	10	0	3
TUSCARAWAS	97	1	1	2	4	4	4	33	25	13	9	1	0	0
UNION	45	1	0	1	1	2	4	17	4	6	8	0	0	1
VAN WERT	0	0	0	0	0	0	0	0	0	0	0	0	0	0
VINTON	9	0	0	1	0	1	2	4	1	0	0	0	0	0
WARREN	216	1	2	4	2	14	10	52	43	50	26	10	0	2
WASHINGTON	18	1	1	1	1	0	1	3	6	3	1	0	0	0
WAYNE	121	3	3	3	3	6	7	38	27	12	12	6	0	1
WILLIAMS	22	1	1	0	1	0	1	8	5	3	0	1	0	1
WOOD	172	0	0	1	3	11	12	70	30	23	11	10	1	0
WYANDOT	14	1	0	0	0	1	0	2	6	2	2	0	0	0

TABLE 5a

RESIDENT INDUCED ABORTIONS REPORTED IN OHIO, BY SELECTED
COUNTIES, RACE AND BROAD AGE GROUPS, 2011

Residence/Race	Total	Age Group					Unk
		10-19	20-29	30-39	40-49	50+	
OHIO	23,250	3,406	13,699	5,236	712	1	196
White	12,166	1,760	7,190	2,671	438	0	107
Black	8,986	1,388	5,380	1,955	191	1	71
Oth/Unk	2,098	258	1,129	610	83	0	18
ALLEN	146	24	95	22	4	0	1
White	99	12	66	17	4	0	0
Black	42	11	26	4	0	0	1
Oth/Unk	5	1	3	1	0	0	0
ASHTABULA	157	29	87	32	8	0	1
White	130	25	75	22	7	0	1
Black	11	1	5	4	1	0	0
Oth/Unk	16	3	7	6	0	0	0
ATHENS	83	13	59	10	1	0	0
White	66	12	43	10	1	0	0
Black	10	1	9	0	0	0	0
Oth/Unk	7	0	7	0	0	0	0
BUTLER	559	80	316	139	20	0	4
White	382	60	221	84	14	0	3
Black	122	17	64	36	4	0	1
Oth/Unk	55	3	31	19	2	0	0
CLARK	202	44	114	39	2	0	3
White	139	32	76	28	1	0	2
Black	55	11	32	11	1	0	0
Oth/Unk	8	1	6	0	0	0	1
CLERMONT	233	31	148	46	7	0	1
White	220	29	141	42	7	0	1
Black	7	1	3	3	0	0	0
Oth/Unk	6	1	4	1	0	0	0
COLUMBIANA	86	12	51	18	4	0	1
White	77	11	44	17	4	0	1
Black	6	1	4	1	0	0	0
Oth/Unk	3	0	3	0	0	0	0

TABLE 5a. RESIDENT INDUCATED ABORTIONS, 2011 (PAGE 2)

Residence/Race	Total	Age Group					Unk
		10-19	20-29	30-39	40-49	50+	
CUYAHOGA	5,828	849	3,395	1,372	168	0	44
White	1,630	215	949	395	58	0	13
Black	3,495	540	2,061	787	83	0	24
Oth/Unk	703	94	385	190	27	0	7
DELAWARE	164	18	87	51	8	0	0
White	129	12	74	38	5	0	0
Black	18	6	9	3	0	0	0
Oth/Unk	17	0	4	10	3	0	0
ERIE	101	15	58	25	2	0	1
White	67	10	40	15	1	0	1
Black	26	5	13	8	0	0	0
Oth/Unk	8	0	5	2	1	0	0
FAIRFIELD	149	26	90	26	4	0	3
White	116	21	76	14	4	0	1
Black	24	2	13	7	0	0	2
Oth/Unk	9	3	1	5	0	0	0
FRANKLIN	3,529	406	2,174	817	106	0	26
White	1,680	186	1,064	361	57	0	12
Black	1,508	193	912	355	35	0	13
Oth/Unk	341	27	198	101	14	0	1
GREENE	218	24	147	41	6	0	0
White	145	15	95	30	5	0	0
Black	60	8	46	6	0	0	0
Oth/Unk	13	1	6	5	1	0	0
HAMILTON	2,374	305	1,429	564	57	0	19
White	883	94	572	184	24	0	9
Black	1,269	188	741	306	26	0	8
Oth/Unk	222	23	116	74	7	0	2
HANCOCK	51	7	31	11	2	0	0
White	41	7	23	9	2	0	0
Black	4	0	4	0	0	0	0
Oth/Unk	6	0	4	2	0	0	0
JEFFERSON	9	2	4	3	0	0	0
White	7	2	4	1	0	0	0
Black	2	0	0	2	0	0	0
KNOX	43	7	30	4	2	0	0
White	42	7	29	4	2	0	0
Black	1	0	1	0	0	0	0
LAKE	460	59	263	107	26	0	5
White	347	46	198	80	20	0	3
Black	61	6	41	11	2	0	1
Oth/Unk	52	7	24	16	4	0	1

TABLE 5a. RESIDENT INDUCATED ABORTIONS, 2011 (PAGE 3)

Residence/Race	Total	Age Group					Unk
		10-19	20-29	30-39	40-49	50+	
LICKING	205	34	120	40	10	0	1
White	183	31	107	34	10	0	1
Black	18	3	11	4	0	0	0
Oth/Unk	4	0	2	2	0	0	0
LORAIN	570	102	300	136	29	0	3
White	368	57	195	88	25	0	3
Black	114	28	59	24	3	0	0
Oth/Unk	88	17	46	24	1	0	0
LUCAS	1,239	202	770	223	21	0	23
White	628	107	384	114	12	0	11
Black	505	81	322	86	7	0	9
Oth/Unk	106	14	64	23	2	0	3
MAHONING	422	60	256	89	13	1	3
White	222	24	139	49	9	0	1
Black	174	33	103	32	3	1	2
Oth/Unk	26	3	14	8	1	0	0
MARION	69	11	47	11	0	0	0
White	58	9	40	9	0	0	0
Black	9	1	6	2	0	0	0
Oth/Unk	2	1	1	0	0	0	0
MEDINA	210	30	109	56	12	0	3
White	181	24	98	47	10	0	2
Black	8	4	2	0	1	0	1
Oth/Unk	21	2	9	9	1	0	0
MIAMI	107	21	56	26	4	0	0
White	91	19	47	22	3	0	0
Black	9	1	7	1	0	0	0
Oth/Unk	7	1	2	3	1	0	0
MONTGOMERY	1,096	144	665	255	25	0	7
White	520	64	310	130	12	0	4
Black	509	72	316	108	10	0	3
Oth/Unk	67	8	39	17	3	0	0
PORTAGE	325	52	200	61	9	0	3
White	246	38	146	52	7	0	3
Black	54	9	41	3	1	0	0
Oth/Unk	25	5	13	6	1	0	0

TABLE 5a. RESIDENT INDUCATED ABORTIONS, 2011 (PAGE 4)

Residence/Race	Total	Age Group					Unk
		10-19	20-29	30-39	40-49	50+	
RICHLAND	161	20	92	44	5	0	0
White	120	16	62	38	4	0	0
Black	37	4	26	6	1	0	0
Oth/Unk	4	0	4	0	0	0	0
SANDUSKY	72	13	41	13	5	0	0
White	59	12	34	8	5	0	0
Black	8	1	4	3	0	0	0
Oth/Unk	5	0	3	2	0	0	0
SCIOTO	53	13	29	8	3	0	0
White	50	13	26	8	3	0	0
Black	3	0	3	0	0	0	0
SENECA	53	11	26	15	1	0	0
White	48	8	24	15	1	0	0
Black	3	2	1	0	0	0	0
Oth/Unk	2	1	1	0	0	0	0
STARK	634	120	359	125	23	0	7
White	453	87	244	95	21	0	6
Black	143	29	91	20	2	0	1
Oth/Unk	38	4	24	10	0	0	0
SUMMIT	1,352	219	787	275	51	0	20
White	747	100	448	151	35	0	13
Black	494	103	291	87	8	0	5
Oth/Unk	111	16	48	37	8	0	2
TRUMBULL	339	49	193	84	10	0	3
White	243	35	132	65	8	0	3
Black	78	11	52	14	1	0	0
Oth/Unk	18	3	9	5	1	0	0
WARREN	216	33	95	76	10	0	2
White	186	31	88	57	8	0	2
Black	9	1	3	4	1	0	0
Oth/Unk	21	1	4	15	1	0	0
WAYNE	121	25	65	24	6	0	1
White	101	22	51	21	6	0	1
Black	8	1	6	1	0	0	0
Oth/Unk	12	2	8	2	0	0	0
WOOD	172	27	100	34	11	0	0
White	135	16	79	30	10	0	0
Black	26	6	18	2	0	0	0
Oth/Unk	11	5	3	2	1	0	0

TABLE 5b

RESIDENT INDUCED ABORTIONS REPORTED IN OHIO, BY SELECTED COUNTIES, RACE AND AGE, 2011

County/Race	Total	Age Group															
		<15	15	16	17	18	19	15-19	20	21	20-24	25-29	30-34	35-39	40-44	45+	Unk.
OHIO	23,250	120	196	343	525	989	1,233	3,286	1,536	1,761	8,046	5,653	3,406	1,830	673	40	196
White	12,166	52	99	161	259	527	662	1,708	814	975	4,301	2,889	1,625	1,046	411	27	107
Black	8,986	61	85	163	229	391	459	1,327	617	667	3,139	2,241	1,385	570	183	9	71
Oth/Unk	2,098	7	12	19	37	71	112	251	105	119	606	523	396	214	79	4	18
BUTLER	559	3	7	11	12	16	31	77	28	41	182	134	101	38	20	0	4
White	382	1	5	8	8	13	25	59	20	31	131	90	57	27	14	0	3
Black	122	2	2	3	2	3	5	15	6	7	38	26	31	5	4	0	1
Oth/Unk	55	0	0	0	2	0	1	3	2	3	13	18	13	6	2	0	0
CUYAHOGA	5,828	27	45	86	114	254	323	822	384	416	1,914	1,481	879	493	161	7	44
White	1,630	3	7	19	27	63	96	212	104	121	544	405	229	166	57	1	13
Black	3,495	23	33	62	72	168	182	517	245	248	1,166	895	536	251	79	4	24
Oth/Unk	703	1	5	5	15	23	45	93	35	47	204	181	114	76	25	2	7
FRANKLIN	3,529	13	19	42	66	114	152	393	210	275	1,244	930	550	267	98	8	26
White	1,680	5	8	18	29	57	69	181	117	133	621	443	219	142	50	7	12
Black	1,508	8	11	23	34	51	66	185	79	123	525	387	254	101	34	1	13
Oth/Unk	341	0	0	1	3	6	17	27	14	19	98	100	77	24	14	0	1
GREENE	218	0	1	2	2	7	12	24	19	30	98	49	26	15	6	0	0
White	145	0	0	2	2	3	8	15	11	19	64	31	20	10	5	0	0
Black	60	0	1	0	0	3	4	8	8	10	31	15	3	3	0	0	0
Oth/Unk	13	0	0	0	0	1	0	1	0	1	3	3	3	2	1	0	0
HAMILTON	2,374	15	16	53	53	81	110	290	137	164	821	608	386	178	54	3	19
White	883	3	6	19	19	20	40	91	55	66	320	252	115	69	22	2	9
Black	1,269	10	10	33	33	56	61	178	75	85	437	304	224	82	25	1	8
Oth/Unk	222	2	0	1	1	5	9	21	7	13	64	52	47	27	7	0	2
LORAIN	570	4	7	18	18	26	34	98	38	37	177	123	91	45	28	1	3
White	368	1	4	9	9	14	24	56	27	31	118	77	52	36	24	1	3
Black	114	3	2	6	6	6	4	25	4	4	29	30	19	5	3	0	0
Oth/Unk	88	0	1	3	3	6	6	17	7	2	30	16	20	4	1	0	0

TABLE 5b. RESIDENT INDUCED ABORTIONS, 2011 (PAGE 2)

County/Race	Total	Age Group															
		<15	15	16	17	18	19	15-19	20	21	20-24	25-29	30-34	35-39	40-44	45+	Unk.
LUCAS	1,239	10	8	18	32	61	73	192	100	109	493	277	154	69	19	2	23
White	628	7	3	7	18	32	40	100	50	50	243	141	72	42	11	1	11
Black	505	1	5	9	13	26	27	80	45	47	210	112	68	18	6	1	9
Oth/Unk	106	2	0	2	1	3	6	12	5	12	40	24	14	9	2	0	3
MONTGOMERY	1,096	5	12	12	19	40	56	139	86	73	391	274	162	93	23	2	7
White	520	2	5	4	6	22	25	62	46	40	185	125	74	56	11	1	4
Black	509	3	7	8	13	14	27	69	34	33	182	134	78	30	9	1	3
Oth/Unk	67	0	0	0	0	4	4	8	6	0	24	15	10	7	3	0	0
SUMMIT	1,352	4	12	22	34	66	81	215	102	100	469	318	179	96	46	5	20
White	747	0	5	9	10	32	44	100	57	59	267	181	92	59	31	4	13
Black	494	4	7	12	20	30	30	99	39	38	180	111	64	23	8	0	5
Oth/Unk	111	0	0	1	4	4	7	16	6	3	22	26	23	14	7	1	2

TABLE 7

INDUCED ABORTIONS REPORTED IN OHIO, BY METHOD OF TERMINATION AND COUNTY OF OCCURRENCE, 2011

County of Occurrence	Method of Termination										
	TOTAL	Curretage	D & Ext	D & Evac	Saline Instill	Prostag Instill	Hyster- otomy	Hyster- ectomy	Other	Non Surgical	Not Reported
Total Abortions Reported	24,764	20,456	139	2,276	28	52	1	1	384	1,234	770
Allen County	6	0	0	0	0	0	0	0	0	6	0
Cuyahoga County	8,908	7,000	15	1,261	5	24	0	0	364	577	104
Franklin County	5,640	5,242	15	98	8	14	1	0	4	262	20
Greene County	19	0	0	0	0	0	0	0	0	19	0
Hamilton County	4,363	3,848	14	493	4	4	0	1	2	26	13
Lucas County	2,318	1,494	79	150	4	8	0	0	7	43	568
Montgomery County	1,701	1,439	9	240	0	1	0	0	0	6	6
Stark County	1	1	0	0	0	0	0	0	0	0	0
Summit County	1,808	1,432	7	34	7	1	0	0	7	295	59

TABLE 8

TOTAL INDUCED ABORTIONS REPORTED IN OHIO, BY
GESTATIONAL AGE, 2011

Gestational Age	Number	Percent
Total Abortions Reported	24,764	100.0
Less than 9 Weeks	14,105	57.0
9 - 12 Weeks	6,909	27.9
13 - 19 Weeks	3,068	12.4
20 Weeks	147	0.6
21 - 24	374	1.5
25 - 36 Weeks	4	0.0
Unknown	157	0.6

TABLE 9

RESIDENT INDUCED ABORTIONS IN OHIO, BY AGE OF WOMEN OBTAINING ABORTION
AND BY NUMBER OF PRIOR INDUCED ABORTIONS, 2011

Age Group	Total	Prior Induced Abortion						Unk
		0	1	2	3	4	5+	
Total Abortions	23,250	10,009	6,026	2,531	1,046	400	356	2,882
Under 15	120	89	5	1	0	0	0	25
15-19	3,286	2,148	404	49	17	1	2	665
20-24	8,046	3,795	2,120	709	201	60	45	1,116
25-29	5,653	2,002	1,674	784	377	135	124	557
30-34	3,406	1,041	1,022	560	271	133	107	272
35-39	1,830	581	548	310	123	53	60	155
40-44	673	240	208	91	43	12	16	63
45-59	40	20	9	3	1	1	0	6
Unknown	196	93	36	24	13	5	2	23

TABLE 10a

TOTAL INDUCED ABORTIONS IN OHIO WITH POST-ABORTION COMPLICATIONS, BY
TYPE OF COMPLICATION, 2011

(DATA SOURCE IS 'CONFIDENTIAL ABORTION REPORTING FORM')

Complication Type	Number of Complications	Percent of Abortions with Complications
Perforation of Uterus	1	0.00%
Cervical Laceration	9	13.43%
Hemorrhage	28	41.79%
Incomplete Abortion	11	16.42%
Hematometra	6	8.96%
Anesthetic	1	1.49%
Failed Abortion	1	1.49%
Infection	6	8.96%
Death	0	0.00%
Other	6	8.96%
Total Number of Complications*	69	Not Applicable
Total Abortions with One or More Complications	67	100.0%

TABLE 10b

TOTAL INDUCED ABORTIONS IN OHIO WITH POST-ABORTION COMPLICATIONS, BY
TYPE OF COMPLICATION, 2011

(DATA SOURCE IS 'POST-ABORTION CARE REPORT FOR COMPLICATIONS')

Complication Type	Number of Complications	Percent of Abortions with Complications
Perforation of Uterus	1	0.99%
Cervical Laceration	1	0.99%
Hemorrhage	12	11.88%
Incomplete Abortion	21	20.79%
Hematometra	30	29.70%
Anesthetic	0	0.00%
Failed Abortion	14	13.86%
Infection	11	10.89%
Death	0	0.00%
Other	11	10.89%
Total Number of Complications*	101	Not Applicable
Total Abortions with One or More Complications	91	100.0%

TABLE 11

TOTAL INDUCED ABORTIONS IN OHIO WITH POST-ABORTION COMPLICATIONS, BY
TYPE OF COMPLICATION AND GESTATION PERIOD, 2011

(DATA SOURCE IS POST-ABORTION CARE REPORT FOR COMPLICATIONS')

Complication Type	Total	Gestation Period				Unk
		< 9 Wks	9-12 Wks	13-19 Wks	20+ Wks	
(Number of Complications)						
Perforation of Uterus	1	0	0	0	1	0
Cervical Laceration	1	0	1	0	0	0
Hemorrhage	12	3	3	3	2	1
Incomplete Abortion	21	14	3	3	0	1
Hematometra	30	15	14	0	1	0
Anesthetic	0	0	0	0	0	0
Failed Abortion	14	14	0	0	0	0
Infection	11	7	3	0	0	1
Death	0	0	0	0	0	0
Other/Unreported	11	6	2	2	1	0
Total Number of Complications*	101	59	26	8	5	3
Total Abortions with One or More Complications	91	52	26	7	3	3

NOTE: An abortion may have more than one reported complication. Complications reported in this table may or may not also be reported in Table 10b.

TABLE 12

RESIDENT INDUCED ABORTIONS BY ZIP CODE OF PATIENT, OHIO, 2011

Zip Code	Total	Zip Code	Total	Zip Code	Total	Zip Code	Total
43001	3	43074	14	43192	1	43303	1
43003	5	43076	14	43201	144	43310	1
43004	55	43078	24	43202	84	43311	12
43005	1	43080	6	43203	50	43314	3
43006	2	43081	103	43204	104	43315	8
43007	1	43082	18	43205	55	43316	3
43008	1	43085	46	43206	99	43318	3
43009	3	43088	1	43207	110	43319	2
43011	4	43096	1	43208	3	43320	2
43013	2	43102	2	43209	63	43323	1
43014	3	43103	8	43210	12	43326	8
43015	64	43105	4	43211	83	43332	1
43016	58	43107	5	43212	50	43334	4
43017	65	43109	2	43213	142	43337	2
43018	1	43110	103	43214	39	43338	9
43019	9	43112	3	43215	52	43340	2
43021	8	43113	18	43216	6	43342	1
43022	5	43114	1	43217	9	43343	1
43023	20	43115	1	43218	2	43344	4
43024	1	43116	2	43219	115	43345	1
43025	5	43119	47	43220	65	43351	8
43026	83	43120	1	43221	48	43354	1
43028	5	43123	88	43222	10	43355	1
43029	1	43125	32	43223	47	43356	1
43031	10	43128	7	43224	138	43357	3
43035	39	43130	47	43225	3	43360	1
43040	36	43135	4	43227	86	43402	62
43042	1	43136	1	43228	167	43403	8
43044	4	43137	1	43229	229	43408	1
43045	2	43138	22	43230	119	43410	14
43046	5	43140	19	43231	85	43412	3
43050	25	43143	5	43232	239	43413	4
43054	23	43145	1	43233	1	43416	2
43055	80	43146	9	43234	3	43417	1
43056	23	43147	57	43235	85	43420	48
43059	1	43148	1	43237	1	43430	3
43061	3	43149	2	43239	1	43431	3
43062	34	43150	1	43240	6	43432	2
43064	8	43151	1	43242	1	43439	1
43065	47	43154	1	43268	1	43440	3
43066	1	43155	2	43277	1	43447	2
43067	1	43156	1	43279	1	43449	12
43068	196	43157	3	43280	1	43450	2
43071	2	43160	20	43286	1	43452	11
43072	2	43162	7	43301	1	43456	2
43073	1	43164	2	43302	52	43457	3

TABLE 12. RESIDENT INDUCED ABORTIONS BY ZIP CODE OF PATIENT, OHIO, 2011 (PAGE 2)

Zip Code	Total	Zip Code	Total	Zip Code	Total	Zip Code	Total
43458	3	43605	115	43777	5	44005	1
43460	5	43606	71	43778	1	44007	1
43465	6	43607	110	43779	1	44010	2
43466	1	43608	60	43780	1	44011	29
43469	2	43609	89	43782	1	44012	26
43486	1	43610	21	43783	2	44017	40
43500	1	43611	45	43787	2	44020	1
43502	4	43612	104	43788	3	44021	4
43505	1	43613	57	43793	2	44022	22
43506	14	43614	67	43801	2	44023	25
43509	1	43615	123	43802	1	44024	15
43512	28	43616	35	43804	3	44026	16
43515	7	43617	7	43805	1	44028	10
43516	2	43619	8	43807	1	44030	17
43517	2	43620	17	43810	1	44032	2
43519	1	43623	42	43812	13	44033	2
43521	1	43625	1	43821	6	44035	148
43522	2	43631	1	43822	3	44036	1
43525	2	43635	1	43824	2	44039	38
43526	7	43682	1	43830	2	44040	4
43527	1	43690	1	43832	12	44041	24
43528	27	43698	1	43835	1	44044	17
43531	1	43699	1	43837	3	44046	4
43532	2	43701	62	43840	3	44047	19
43533	2	43702	2	43843	1	44048	2
43534	2	43703	1	43844	4	44050	9
43535	1	43706	1	43845	4	44051	1
43536	2	43707	1	43847	1	44052	98
43537	42	43708	1	43852	2	44053	34
43540	1	43713	3	43858	1	44054	21
43542	3	43716	2	43867	1	44055	58
43543	7	43718	1	43899	1	44056	16
43545	8	43720	1	43902	1	44057	28
43551	47	43722	1	43903	2	44058	1
43554	1	43723	6	43907	3	44060	90
43555	1	43724	3	43912	1	44061	1
43557	1	43725	16	43917	1	44062	8
43558	19	43726	2	43920	11	44065	8
43560	50	43730	6	43938	1	44066	1
43561	1	43731	3	43945	3	44067	48
43566	6	43732	1	43950	2	44068	1
43567	12	43735	1	43952	1	44070	69
43569	1	43739	1	43953	1	44072	6
43571	5	43748	1	43968	4	44073	1
43573	1	43756	3	43969	1	44074	24
43578	1	43760	2	43988	3	44076	10
43601	1	43762	4	44000	1	44077	137
43602	4	43763	1	44001	35	44080	2
43603	2	43764	11	44003	5	44081	12
43604	52	43772	1	44004	68	44082	1

TABLE 12. RESIDENT INDUCED ABORTIONS BY ZIP CODE OF PATIENT, OHIO, 2011 (PAGE 3)

Zip Code	Total	Zip Code	Total	Zip Code	Total	Zip Code	Total
44084	4	44136	44	44243	4	44362	1
44085	4	44137	185	44244	2	44372	1
44086	5	44138	37	44246	1	44382	1
44087	45	44139	60	44248	1	44383	1
44089	22	44140	20	44250	4	44386	1
44090	15	44141	22	44253	5	44387	1
44091	1	44142	45	44254	7	44400	1
44092	39	44143	75	44255	17	44401	1
44093	4	44144	75	44256	82	44402	3
44094	80	44145	50	44260	16	44403	3
44095	70	44146	177	44262	5	44404	2
44096	1	44147	29	44264	5	44405	13
44097	1	44149	22	44265	1	44406	24
44099	1	44152	2	44266	58	44407	1
44100	1	44156	1	44270	10	44408	11
44101	3	44157	1	44272	7	44410	22
44102	237	44163	1	44273	9	44411	5
44103	149	44170	1	44274	1	44412	4
44104	298	44173	1	44275	4	44413	8
44105	329	44184	1	44276	3	44418	1
44106	143	44188	1	44278	26	44420	22
44107	186	44195	3	44280	6	44423	2
44108	235	44199	1	44281	32	44425	17
44109	186	44201	11	44282	1	44428	5
44110	184	44202	33	44286	11	44429	2
44111	151	44203	73	44287	8	44430	5
44112	170	44207	2	44288	4	44431	4
44113	93	44208	1	44290	2	44432	14
44114	23	44211	1	44301	45	44436	3
44115	121	44212	71	44302	18	44437	2
44116	31	44214	3	44303	14	44438	2
44117	48	44215	1	44304	21	44440	7
44118	186	44216	12	44305	71	44441	2
44119	76	44217	2	44306	106	44442	3
44120	304	44218	2	44307	44	44443	2
44121	192	44221	62	44308	4	44444	16
44122	107	44222	2	44309	3	44445	1
44123	95	44223	22	44310	85	44446	36
44124	87	44224	62	44311	35	44449	1
44125	169	44225	1	44312	65	44450	2
44126	35	44226	2	44313	97	44451	3
44127	44	44230	7	44314	53	44452	6
44128	284	44231	11	44315	1	44454	1
44129	68	44232	1	44316	1	44460	26
44130	121	44233	6	44319	47	44461	1
44131	18	44234	9	44320	77	44464	1
44132	125	44236	22	44321	29	44470	5
44133	54	44240	128	44325	1	44471	17
44134	86	44241	38	44333	27	44473	5
44135	86	44242	6	44342	1	44481	16

TABLE 12. RESIDENT INDUCED ABORTIONS BY ZIP CODE OF PATIENT, OHIO, 2011 (PAGE 4)

Zip Code	Total	Zip Code	Total	Zip Code	Total	Zip Code	Total
44482	3	44640	1	44804	1	44936	1
44483	53	44641	20	44805	32	45002	11
44484	44	44642	1	44807	9	45005	31
44485	63	44643	1	44810	5	45011	122
44487	1	44644	6	44811	11	45013	64
44489	2	44645	3	44813	6	45014	105
44491	4	44646	96	44814	1	45015	28
44501	2	44647	24	44817	2	45017	1
44502	25	44653	2	44818	1	45018	1
44503	4	44654	3	44820	11	45025	1
44504	9	44656	3	44821	1	45030	30
44505	51	44657	7	44824	2	45033	1
44506	10	44661	1	44827	5	45036	26
44507	16	44662	11	44830	13	45039	28
44508	1	44663	29	44833	18	45040	73
44509	41	44666	3	44836	2	45041	2
44510	6	44667	21	44837	2	45042	36
44511	36	44671	1	44839	8	45043	1
44512	63	44672	5	44841	2	45044	88
44514	24	44675	2	44842	5	45045	1
44515	66	44676	3	44843	1	45049	1
44521	1	44677	2	44847	8	45050	15
44526	1	44680	2	44851	5	45052	4
44531	1	44681	4	44855	2	45053	3
44574	1	44683	10	44856	2	45054	1
44575	2	44685	25	44857	20	45056	37
44583	1	44688	8	44859	1	45062	1
44601	57	44689	1	44862	1	45064	6
44604	2	44690	2	44864	1	45065	8
44606	5	44691	45	44865	4	45066	17
44608	1	44701	1	44866	2	45067	14
44609	10	44702	1	44867	2	45068	9
44611	3	44703	38	44870	72	45069	72
44612	5	44704	17	44874	1	45071	1
44613	4	44705	49	44875	14	45081	1
44614	16	44706	31	44878	3	45098	1
44615	14	44707	31	44880	6	45102	29
44618	3	44708	49	44882	1	45103	54
44620	2	44709	30	44883	31	45106	18
44621	5	44710	16	44887	1	45107	12
44622	20	44711	2	44888	1	45113	5
44623	1	44713	1	44889	7	45114	1
44625	1	44714	15	44890	12	45118	2
44626	2	44718	10	44902	15	45120	2
44628	1	44720	46	44903	44	45121	3
44629	1	44721	17	44904	14	45122	16
44632	9	44722	2	44905	14	45123	6
44633	1	44730	6	44906	27	45130	5
44634	2	44801	1	44907	21	45131	1
44637	2	44802	1	44914	1	45133	14

TABLE 12. RESIDENT INDUCED ABORTIONS BY ZIP CODE OF PATIENT, OHIO, 2011 (PAGE 5)

Zip Code	Total	Zip Code	Total	Zip Code	Total	Zip Code	Total
45135	2	45232	68	45335	5	45426	72
45140	48	45233	20	45338	3	45427	3
45141	1	45235	1	45339	1	45429	35
45142	5	45236	54	45340	1	45430	5
45144	4	45237	88	45341	3	45431	49
45146	1	45238	103	45342	61	45432	17
45147	1	45239	111	45344	15	45433	1
45148	2	45240	127	45345	5	45434	6
45150	39	45241	38	45347	5	45437	1
45152	12	45242	30	45348	1	45439	24
45153	1	45243	6	45349	2	45440	29
45154	9	45244	33	45356	29	45449	50
45155	1	45245	26	45358	2	45454	1
45157	8	45246	43	45361	1	45458	46
45160	2	45247	31	45363	1	45459	35
45162	1	45248	28	45365	29	45469	1
45167	1	45249	26	45367	1	45501	1
45169	1	45251	75	45368	7	45502	12
45171	6	45252	8	45369	4	45503	47
45176	3	45253	1	45370	1	45504	24
45177	21	45255	26	45371	14	45505	52
45201	1	45257	1	45373	40	45506	32
45202	50	45267	1	45377	26	45601	46
45203	11	45269	2	45378	1	45605	1
45204	27	45301	1	45380	3	45606	1
45205	76	45302	2	45381	3	45607	1
45206	44	45303	1	45383	5	45612	4
45207	40	45304	10	45384	3	45613	2
45208	30	45305	9	45385	49	45614	1
45209	32	45306	3	45387	9	45621	1
45210	1	45308	2	45388	1	45622	1
45211	133	45309	5	45400	1	45631	5
45212	62	45311	4	45401	1	45633	1
45213	45	45312	1	45402	40	45634	3
45214	51	45314	1	45403	36	45638	4
45215	89	45315	5	45404	17	45640	9
45216	26	45316	1	45405	62	45643	1
45217	23	45317	1	45406	74	45644	1
45218	6	45318	8	45407	2	45647	2
45219	63	45320	14	45408	3	45648	6
45220	38	45322	19	45409	11	45651	5
45221	1	45323	6	45410	24	45652	1
45223	62	45324	97	45414	39	45654	1
45224	60	45325	1	45415	28	45656	4
45225	54	45326	1	45416	9	45657	5
45226	17	45327	4	45417	97	45661	3
45227	42	45329	1	45418	9	45662	28
45229	53	45331	13	45419	18	45663	2
45230	62	45333	1	45420	35	45679	1
45231	143	45334	3	45424	91	45682	3

TABLE 12. RESIDENT INDUCED ABORTIONS BY ZIP CODE OF PATIENT, OHIO, 2011 (PAGE 6)

Zip Code	Total	Zip Code	Total	Zip Code	Total	Zip Code	Total
45684	1	45744	2	45813	1	45867	1
45690	13	45750	10	45817	2	45869	3
45692	9	45761	3	45819	1	45871	1
45693	9	45764	11	45822	10	45872	4
45694	8	45766	2	45827	1	45873	1
45695	1	45769	3	45828	2	45874	1
45697	1	45775	1	45830	2	45875	9
45701	60	45776	1	45831	2	45876	1
45709	1	45777	1	45832	1	45877	1
45710	2	45778	3	45833	8	45881	1
45714	3	45780	3	45835	1	45882	1
45715	1	45786	1	45836	1	45883	1
45719	2	45801	39	45840	41	45885	14
45725	1	45804	20	45843	1	45887	4
45729	1	45805	17	45856	3	45889	3
45732	2	45806	8	45858	2	45891	8
45735	2	45807	7	45859	1	45895	11
45740	1	45809	1	45860	1	45896	1
45741	1	45810	4	45862	1		
45743	1	45812	5	45863	1		

TABLE 13

CONTRACEPTIVE HISTORY AT TIME OF CONCEPTION AND
CONTRACEPTION RECOMMENDATIONS PROVIDED
AT DISCHARGE, OHIO, 2011

Type of Contraception	History (at conception)	Recommended (after procedure)
Any Type	7,041	N/A
Pill, Norplant, Depo-Provera	2,668	6,769
Condom, jelly, cervical cap, sponge, insert	3,844	7,276
Rhythm, coitus interruptus	2,993	24
Surgical	69	456
Other	233	2,441

TABLE 14

PREGNANCY HISTORY OF WOMEN WHO OBTAINED
INDUCED TERMINATIONS IN OHIO, 2011

Number	Previous Pregnancies	Prior Spontaneous Abortions	Prior Induced Abortion
Total	53,756	6,364	19,091
0	5,318	16,261	10,821
1	4,785	3,272	6,388
2	4,248	774	2,646
3	3,266	188	1,087
4	2,358	68	416
5	1,418	19	162
6	839	16	78
7	453	9	33
8	270	5	28
9	152	6	14
10	90	15	28
11	51	16	7
12	40	0	3
13	15	0	3
14	6	1	2
15	6	0	2
16	7	0	0
17	0	0	1
18	0	0	0
19	0	0	0
20	0	1	6
Unknown	1,442	4,113	3,039

TABLE 15

SELECTED MEDICAL INFORMATION FROM CONFIDENTIAL ABORTION
REPORTS, OHIO, 2011

Rh Type of Woman

Negative	2788
Not Reported	21783
Unknown	193

**Discharge instruction given as per O.A.C. 3701-47-02
(restricted to women obtaining procedure at 14+ weeks gestation)**

Yes	2183
No	32
Unknown	440

Medical condition of the woman at time of abortion

Good	24166
Fair	550
Other	26
Unknown	22

Type of procedure done immediately after the abortion

Sterilization	323
None	24272
Other	129
Unknown	40

TABLE 16

TYPE OF COUNSELING PROVIDED TO
WOMEN OBTAINING TERMINATION,
OHIO, 2011

<u>Type of Counseling</u>	<u>Number</u>
Psychological	219
Social services	3,618
Pastoral	66
Medical	15,174
Other	28
None	9,329

Note: A single patient could receive one or more counseling types

Confidential Abortion Report

Ohio Department of Health
(Required pursuant to O.A.C. 3701-47-03)

1. Facility name:	For State Use Only
2. Address: Zip code: <input style="width: 40px;" type="text"/>	

GENERAL INFORMATION

3. Zip code of address of the woman: <input style="width: 80px;" type="text"/>	Ohio County of Residence (specify):	Non-Ohio State of Residence (specify):
4. Woman's identification number: <input style="width: 100px;" type="text"/>	5. Age of woman: <input style="width: 40px;" type="text"/>	6. Education: Specify highest number of years completed <input style="width: 40px;" type="text"/>
7. Marital status: <input type="checkbox"/> Never married <input type="checkbox"/> Divorced <input type="checkbox"/> Married <input type="checkbox"/> Widowed <input type="checkbox"/> Separated <input type="checkbox"/> Unknown	8A. Race or ethnic group: <input type="checkbox"/> White <input type="checkbox"/> Asian/Pacific Islander <input type="checkbox"/> Black <input type="checkbox"/> Other /Unknown (specify) _____ <input type="checkbox"/> American Indian	8B. Is woman Hispanic? <input type="checkbox"/> Yes <input type="checkbox"/> No

MEDICAL HISTORY

9. Number of living children: <input style="width: 40px;" type="text"/>	10. Date of last live birth: <input style="width: 40px;" type="text"/> m <input style="width: 40px;" type="text"/> d <input style="width: 40px;" type="text"/> y <input style="width: 40px;" type="text"/>
11. Number of prior abortions: Spontaneous <input style="width: 40px;" type="text"/> Induced <input style="width: 40px;" type="text"/>	12. Date of last Induced abortion: <input style="width: 40px;" type="text"/> m <input style="width: 40px;" type="text"/> d <input style="width: 40px;" type="text"/> y <input style="width: 40px;" type="text"/>
13. Number of previous pregnancies: <input style="width: 40px;" type="text"/>	14. Contraceptive History: Was the woman practicing contraception at the time of conception? <input type="checkbox"/> Yes <input type="checkbox"/> No. <input type="checkbox"/> Unknown
15. Method. If yes to number 14, what was the method used?: <input type="checkbox"/> Pill, Norplant, Depo-Provera <input type="checkbox"/> Surgical <input type="checkbox"/> Condom, Jelly, Cervical Cap, Sponge, Insert <input type="checkbox"/> Other (specify) _____ <input type="checkbox"/> Rhythm, Coitus Interruptus	16. First day of last menstrual period: <input style="width: 40px;" type="text"/> m <input style="width: 40px;" type="text"/> d <input style="width: 40px;" type="text"/> y <input style="width: 40px;" type="text"/>
	17. Rh type of woman: <input type="checkbox"/> Negative <input type="checkbox"/> Positive

MEDICAL PROCEDURE

18. Date of Termination: <input style="width: 40px;" type="text"/> m <input style="width: 40px;" type="text"/> d <input style="width: 40px;" type="text"/> y <input style="width: 40px;" type="text"/>	19A. Clinical Estimate of Gestation in weeks: <input style="width: 40px;" type="text"/>	19B. If 19A is 14 or greater, were discharge instructions given as per O.A.C. 3701-47-02? <input type="checkbox"/> YES <input type="checkbox"/> NO
20. Method of Termination: <input type="checkbox"/> Suction Curettage <input type="checkbox"/> Sharp Curettage <input type="checkbox"/> Dilation & Extraction <input type="checkbox"/> Dilation & Evacuation <input type="checkbox"/> Saline/Urea Installation <input type="checkbox"/> Prostaglandin Installation <input type="checkbox"/> Hysterotomy <input type="checkbox"/> Hysterectomy <input type="checkbox"/> Other (specify) _____ <input type="checkbox"/> Medical (NonSurgical) Specify Medication(s) _____		
21. Medical condition of the woman at the time of the abortion: <input type="checkbox"/> Good <input type="checkbox"/> Fair <input type="checkbox"/> Other (specify) _____	22. Type of procedure done immediately after the abortion: <input type="checkbox"/> Sterilization <input type="checkbox"/> None <input type="checkbox"/> Other (specify) _____	
23. Post Abortion Complications (Indicate all): <input type="checkbox"/> None <input type="checkbox"/> Hemorrhage <input type="checkbox"/> Perforation of uterus <input type="checkbox"/> Cervical laceration <input type="checkbox"/> Infection <input type="checkbox"/> Anesthetic <input type="checkbox"/> Failed Abortion <input type="checkbox"/> Incomplete Abortio <input type="checkbox"/> Hematometra <input type="checkbox"/> Death <input type="checkbox"/> Other (specify) _____	24. Type of family planning recommended: <input type="checkbox"/> Pill, Norplant, Depo-Provera <input type="checkbox"/> Condom, Jelly, Cervical Cap, Sponge, Insert <input type="checkbox"/> Rhythm, Coitus Interruptus <input type="checkbox"/> Surgical <input type="checkbox"/> Other (specify) _____	
25. Type of Counseling given: <input type="checkbox"/> Psychological <input type="checkbox"/> Social Service <input type="checkbox"/> Pastoral <input type="checkbox"/> Medical <input type="checkbox"/> Other (specify) _____ <input type="checkbox"/> None		
26. Physician's name (Type or print):	M.D. D.O.	Physician's Signature: _____ Date: _____

**Send completed forms to:
OHIO DEPARTMENT OF HEALTH,
CONFIDENTIAL REPORTS A,
P.O. BOX 118, COLUMBUS, OHIO 43216**

Post Abortion Care Report For Complications

Ohio Department of Health

(Required Pursuant to O.A.C. 3701-47-03)

To be completed by the physician providing post-abortion care

State Use Only

1. Facility where post-abortion care was provided:			
2. Street or Post Number	City	State	Zip

3. Date of Abortion: Month Day Year ___/___/___	4. Weeks of Gestation: _____			
5A. Facility where Abortion was performed:				
5B Address of Facility:	Street or Post Number	City	State	Zip
6. Date Post Abortion Care Began: Month Day Year ___/___/___	7. Patient Number: ___/___/___/___/___/___/___/___/___/___/___			
8. Complication(s) (Please check all that apply):				
<input type="checkbox"/> Hemorrhage	<input type="checkbox"/> Anesthetic	<input type="checkbox"/> Hematometra	<input type="checkbox"/> Perforation of Uterus	
<input type="checkbox"/> Failure of Amniotic Fluid Ex	<input type="checkbox"/> RH Incompatibility	<input type="checkbox"/> Cervical Laceration	<input type="checkbox"/> Failed Abortion	
<input type="checkbox"/> Infection	<input type="checkbox"/> Incomplete Abortion	<input type="checkbox"/> Death	<input type="checkbox"/> Other (Specify) _____	
9. Duration of treatment: (Indicate number of hours or days)		_____ Hours	_____ Days	

10. Remarks:

11A. Physician's name providing care (Type or print)	11B. Physicians Signature:	M.D. D.O.	Date:
---	----------------------------	--------------	-------

Send Completed Forms to: Ohio Department of Health
 Confidential Reports A
 P O Box 118
 Columbus OH 43216

HEA 1806
Rev 4/96