

GRAPHS OF SELECTED NOTIFIABLE DISEASE INCIDENCE

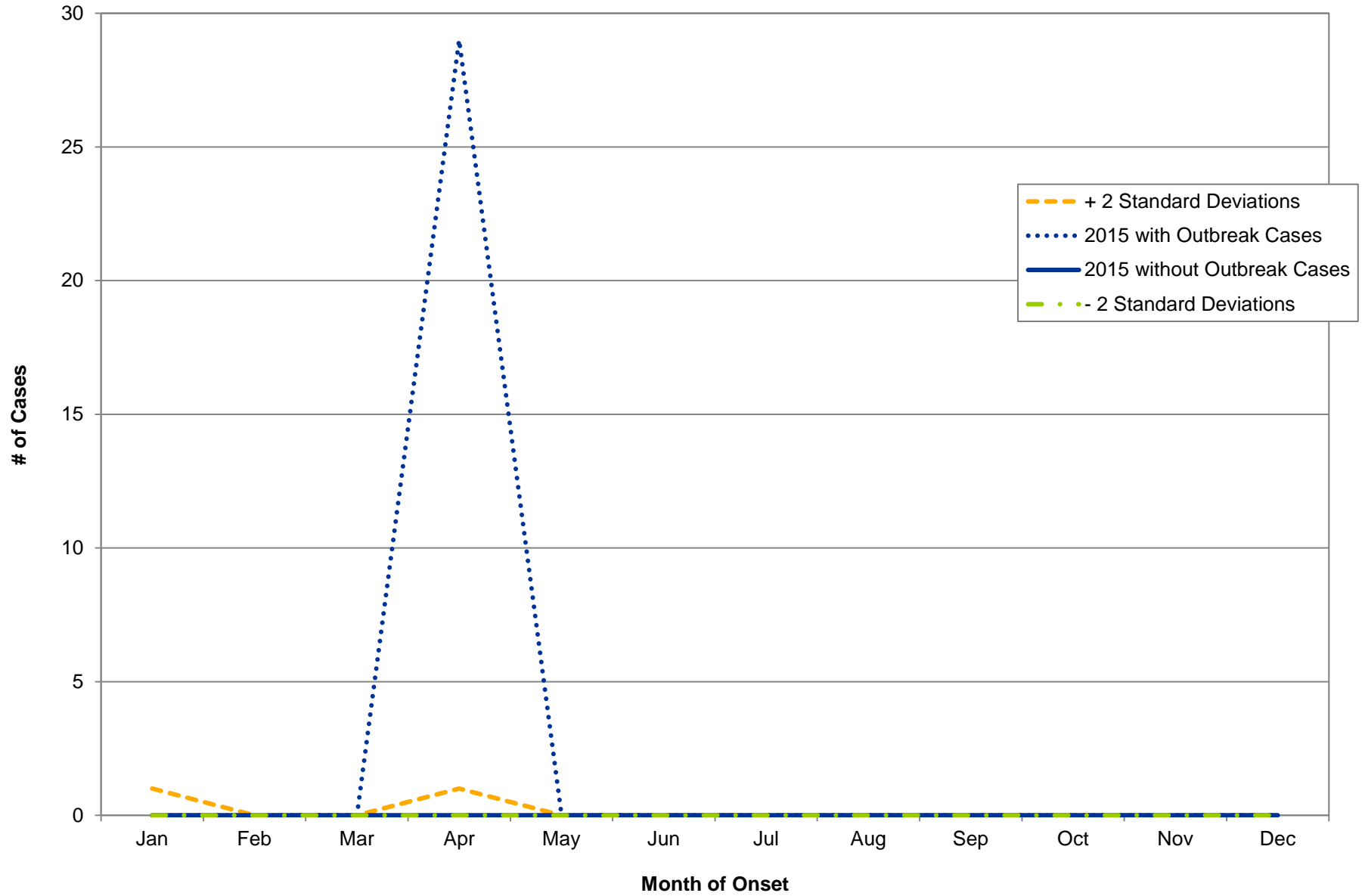
Disease incidence from 2015 is graphically presented to demonstrate general trends in surveillance data for selected Ohio reportable infectious diseases, including any statistically significant changes in the incidence observed. The trend graphs compare disease incidence from 2015 (i.e., observed cases) to baseline disease incidence (i.e., expected cases) by month. Baseline disease incidence was determined by calculating the average disease incidence, excluding outbreak- and cluster-associated cases, throughout the previous three years, 2012-2014. Statistically significant changes in incidence are demonstrated by graphing two standard deviations above and below the average baseline disease incidence. A statistically significant difference in 2015 disease incidence compared to baseline disease incidence suggests the difference is unlikely to have occurred by chance.

General surveillance trends are graphed statewide. The 2015 data represent confirmed and probable cases of selected reportable diseases. In many instances, two trend lines can be seen graphed for 2015 incidence data: one for all cases, including those linked to a known outbreak or cluster, and one for cases not linked to a known outbreak or cluster. It should be noted that not every graph will include a trend line for cases linked to a known outbreak or cluster as not all cases are outbreak- or cluster-associated. For statistical reliability/stability purposes, only diseases for which 10 or more cases were reported in a given month are included in the statewide trends.

Disease data for 2015 and data used in the calculation of the baseline (2012-2014) average are finalized. All data are by month and year of illness onset. The source of the data is the Ohio Disease Reporting System.

INCIDENCE TRENDS BY MONTH OF ONSET, OHIO, 2015

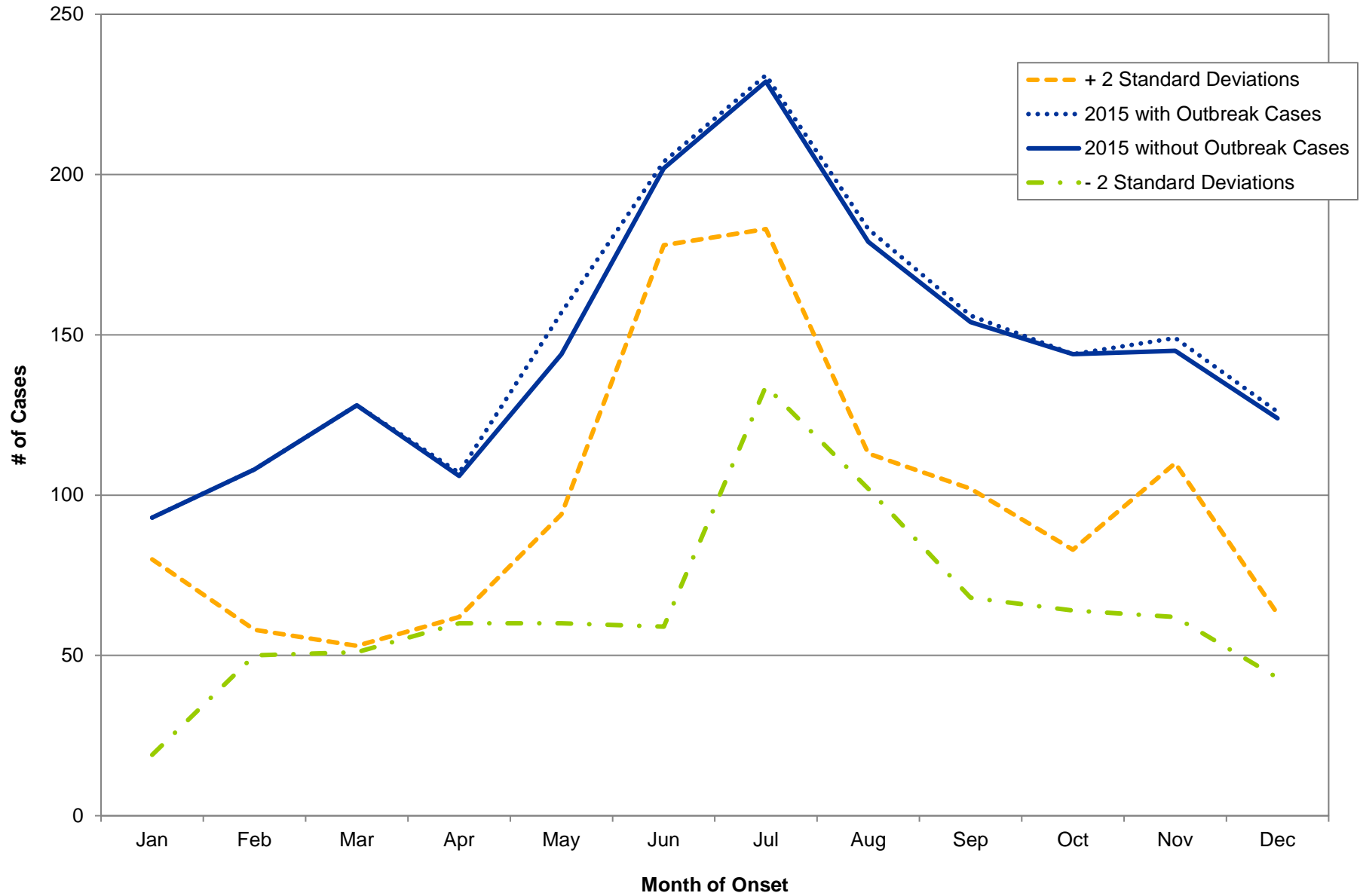
Botulism, Foodborne



Baseline trends are 2 standard deviations of mean counts from 2012-2014 data.
Source of disease data: Ohio Disease Reporting System.

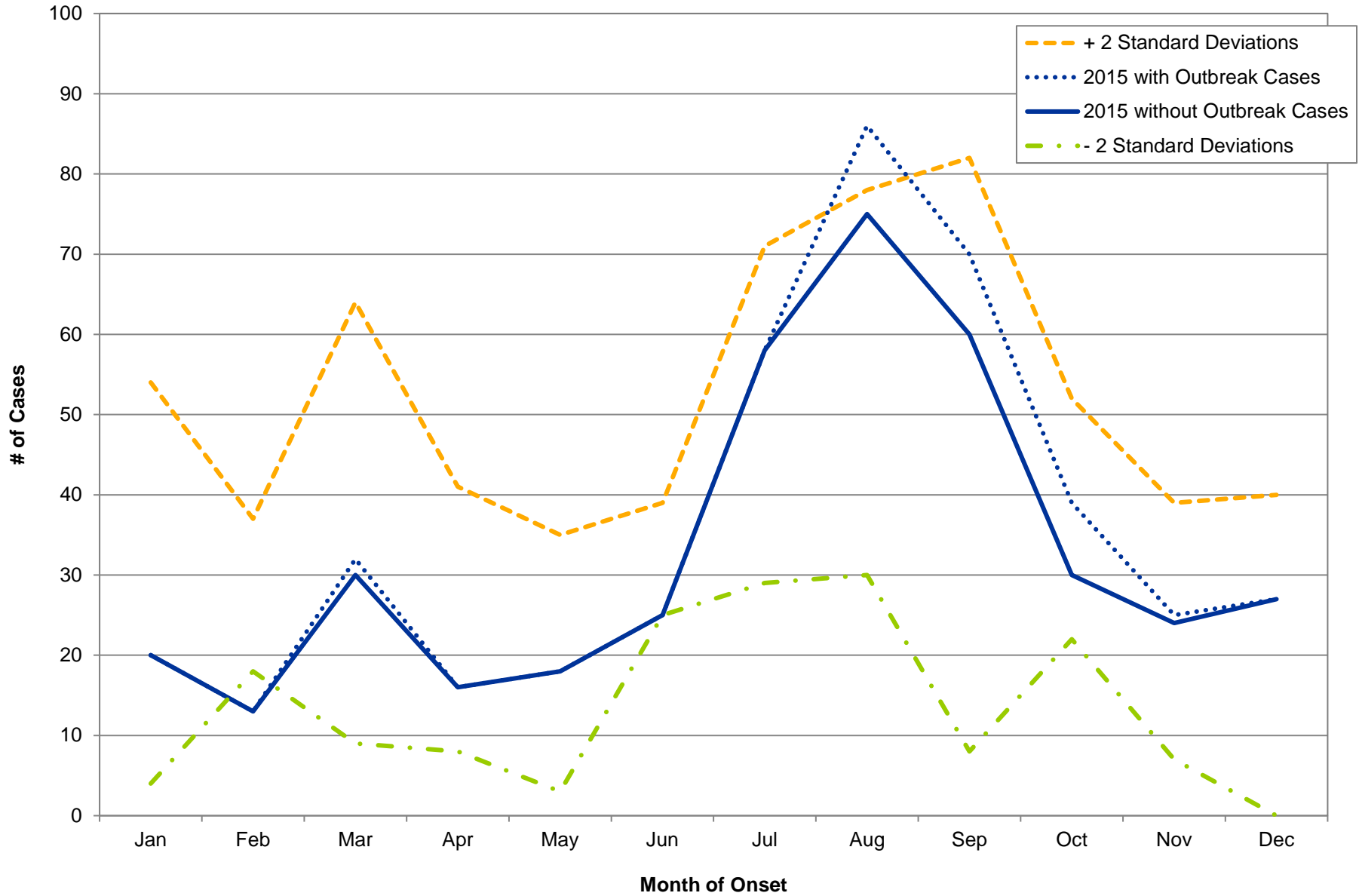
INCIDENCE TRENDS BY MONTH OF ONSET, OHIO, 2015

Campylobacteriosis



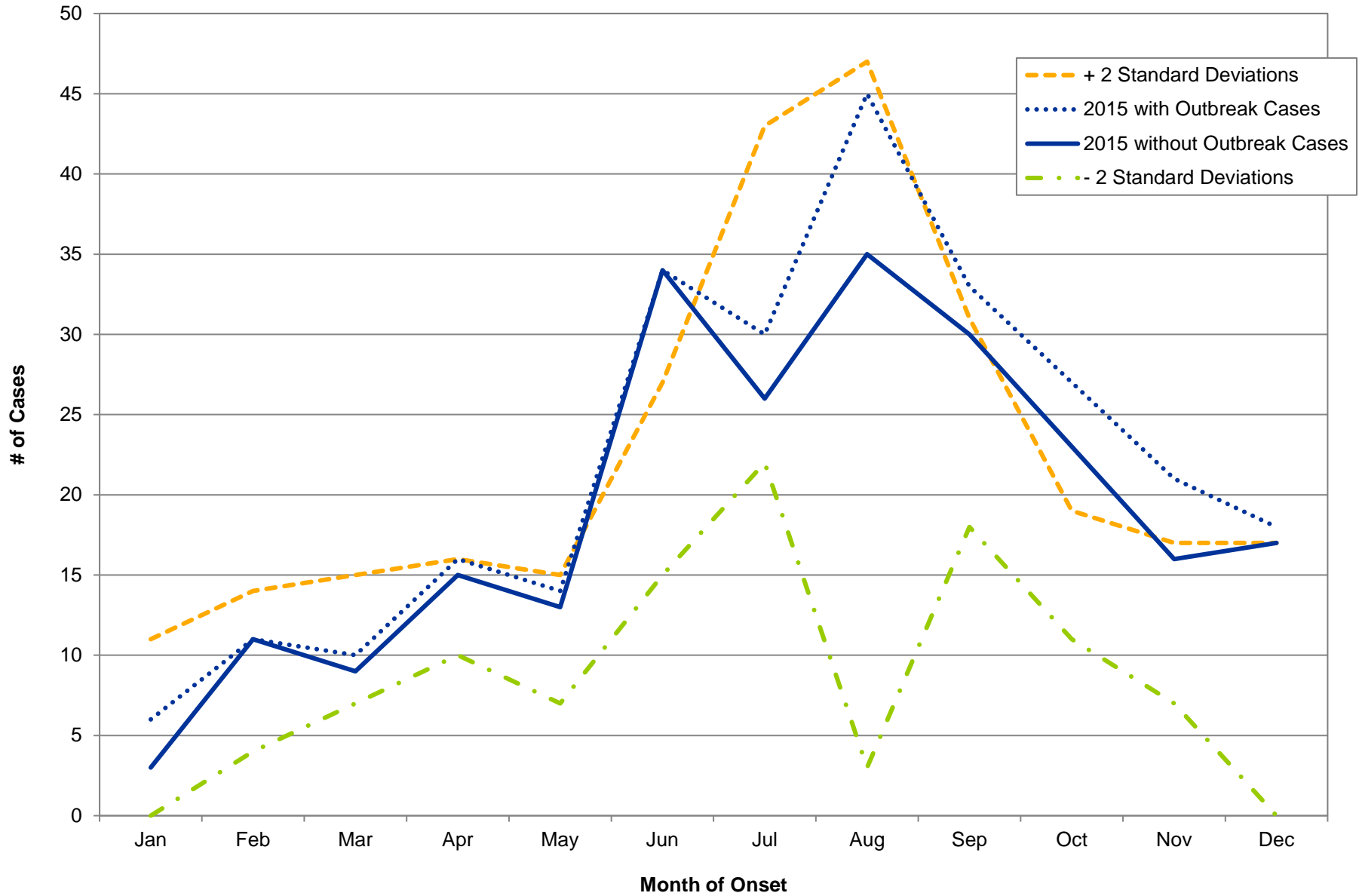
Baseline trends are 2 standard deviations of mean counts from 2012-2014 data.
Source of disease data: Ohio Disease Reporting System.

INCIDENCE TRENDS BY MONTH OF ONSET, OHIO, 2015 Cryptosporidiosis



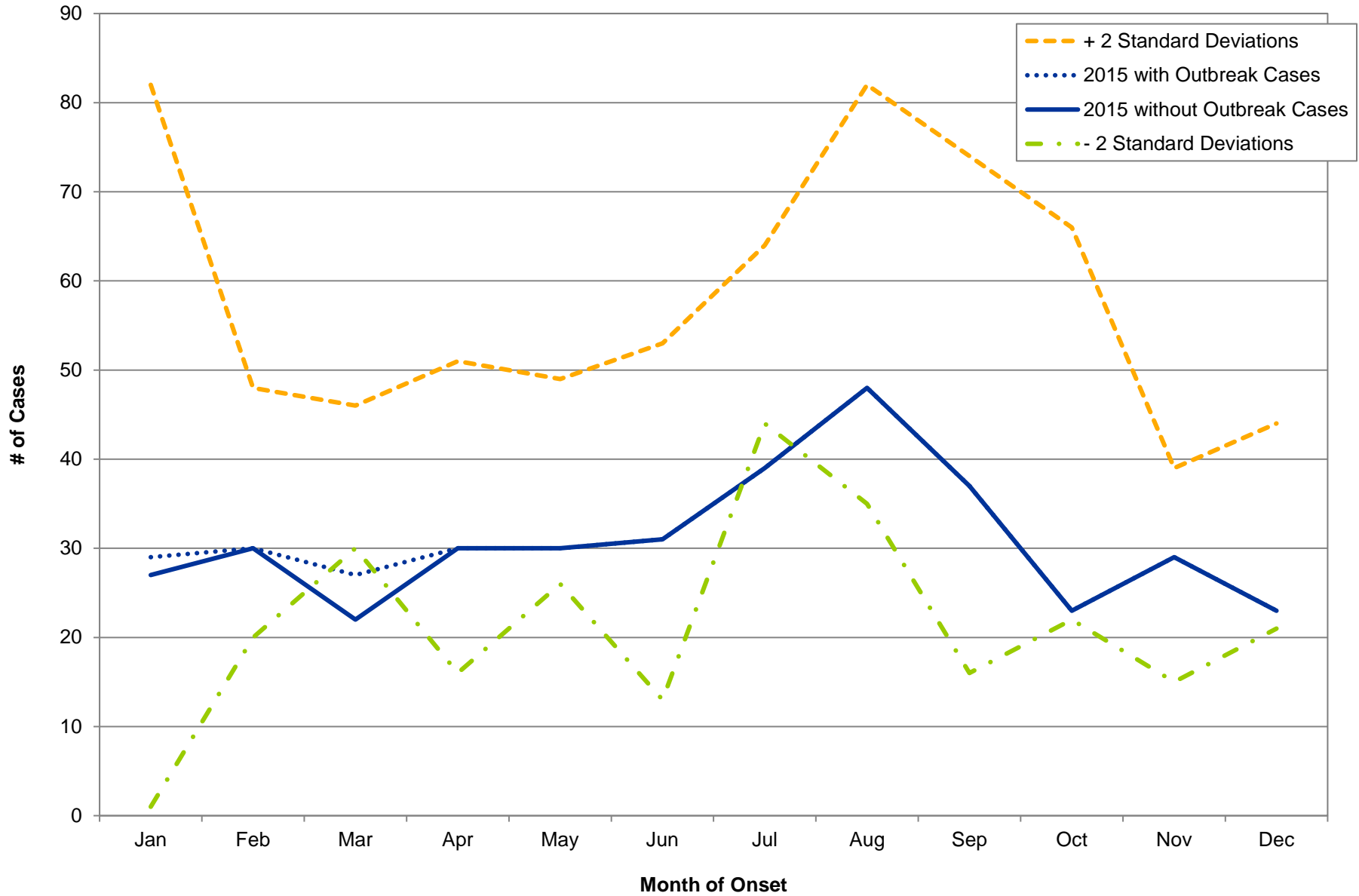
Baseline trends are 2 standard deviations of mean counts from 2012-2014 data.
Source of disease data: Ohio Disease Reporting System.

INCIDENCE TRENDS BY MONTH OF ONSET, OHIO, 2015 *Escherichia coli*, Shiga Toxin-Producing



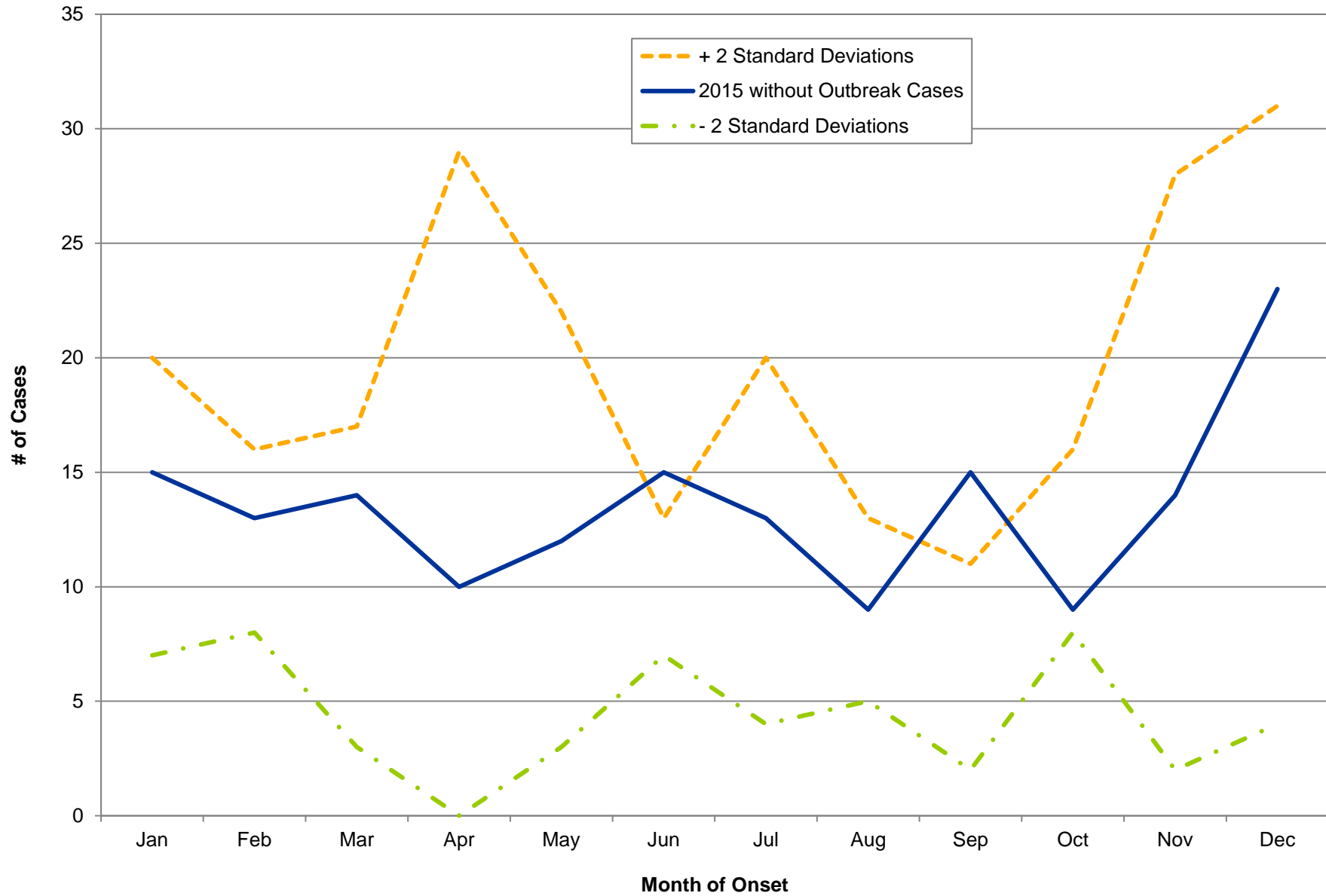
Baseline trends are 2 standard deviations of mean counts from 2012-2014 data.
Source of disease data: Ohio Disease Reporting System.

INCIDENCE TRENDS BY MONTH OF ONSET, OHIO, 2015 Giardiasis



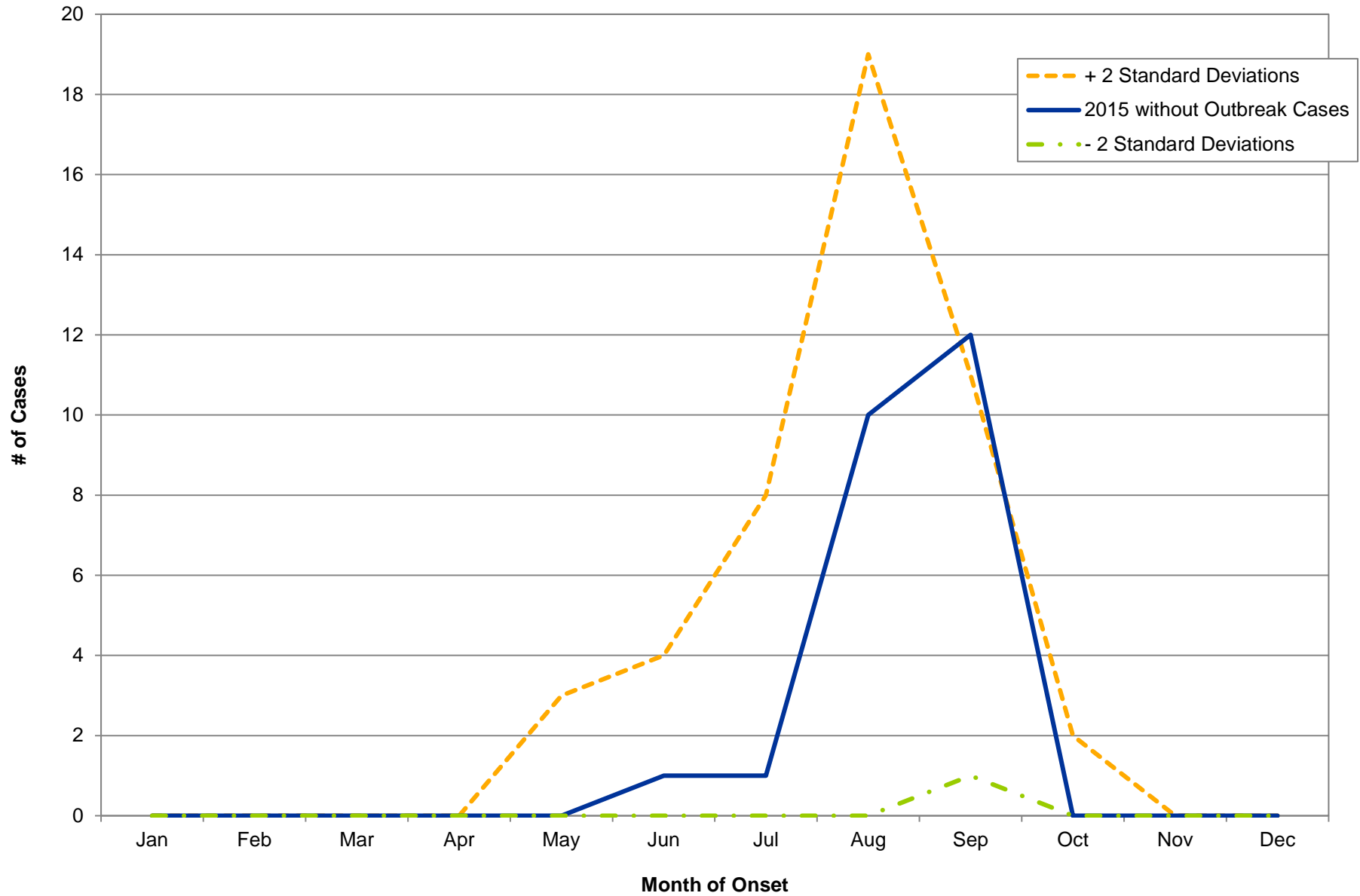
Baseline trends are 2 standard deviations of mean counts from 2012-2014 data.
Source of disease data: Ohio Disease Reporting System.

INCIDENCE TRENDS BY MONTH OF ONSET, OHIO, 2015 *Haemophilus influenzae*, Invasive Disease



Baseline trends are 2 standard deviations of mean counts from 2012-2014 data.
Source of disease data: Ohio Disease Reporting System.

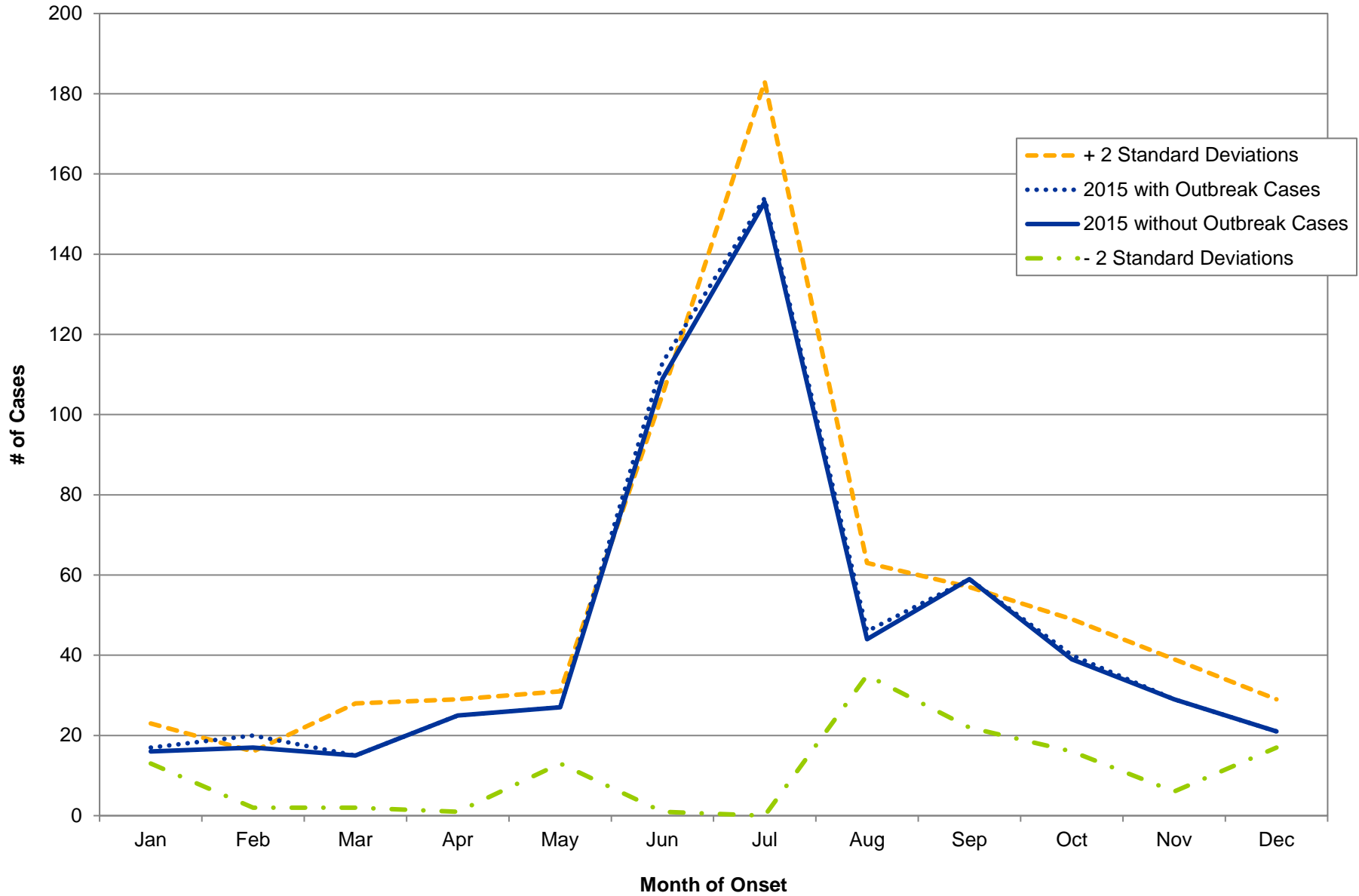
INCIDENCE TRENDS BY MONTH OF ONSET, OHIO, 2015 LaCrosse Virus Disease



Baseline trends are 2 standard deviations of mean counts from 2012-2014 data.
Source of disease data: Ohio Disease Reporting System.

INCIDENCE TRENDS BY MONTH OF ONSET, OHIO, 2015

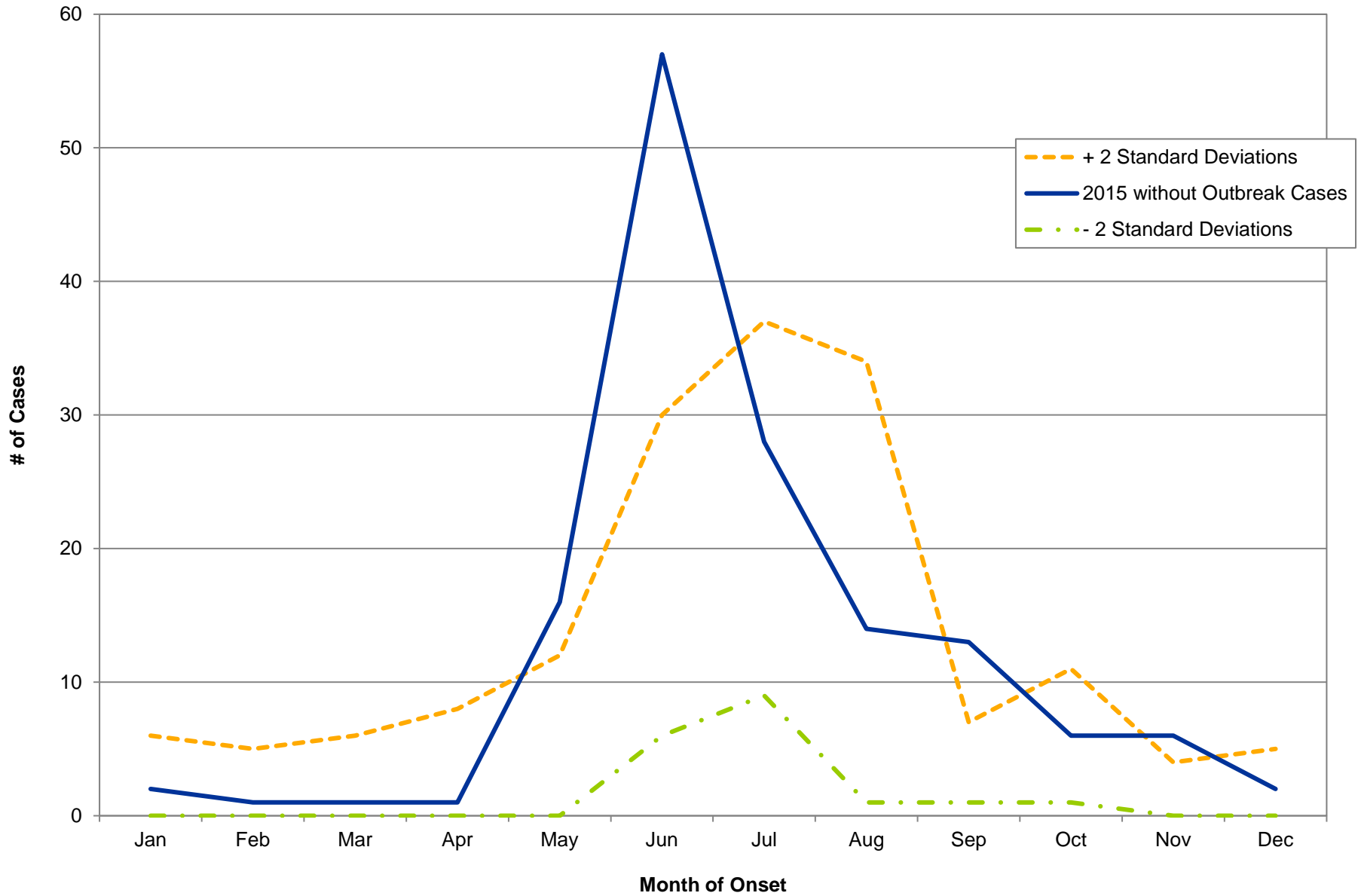
Legionellosis



Baseline trends are 2 standard deviations of mean counts from 2012-2014 data.
Source of disease data: Ohio Disease Reporting System.

INCIDENCE TRENDS BY MONTH OF ONSET, OHIO, 2015

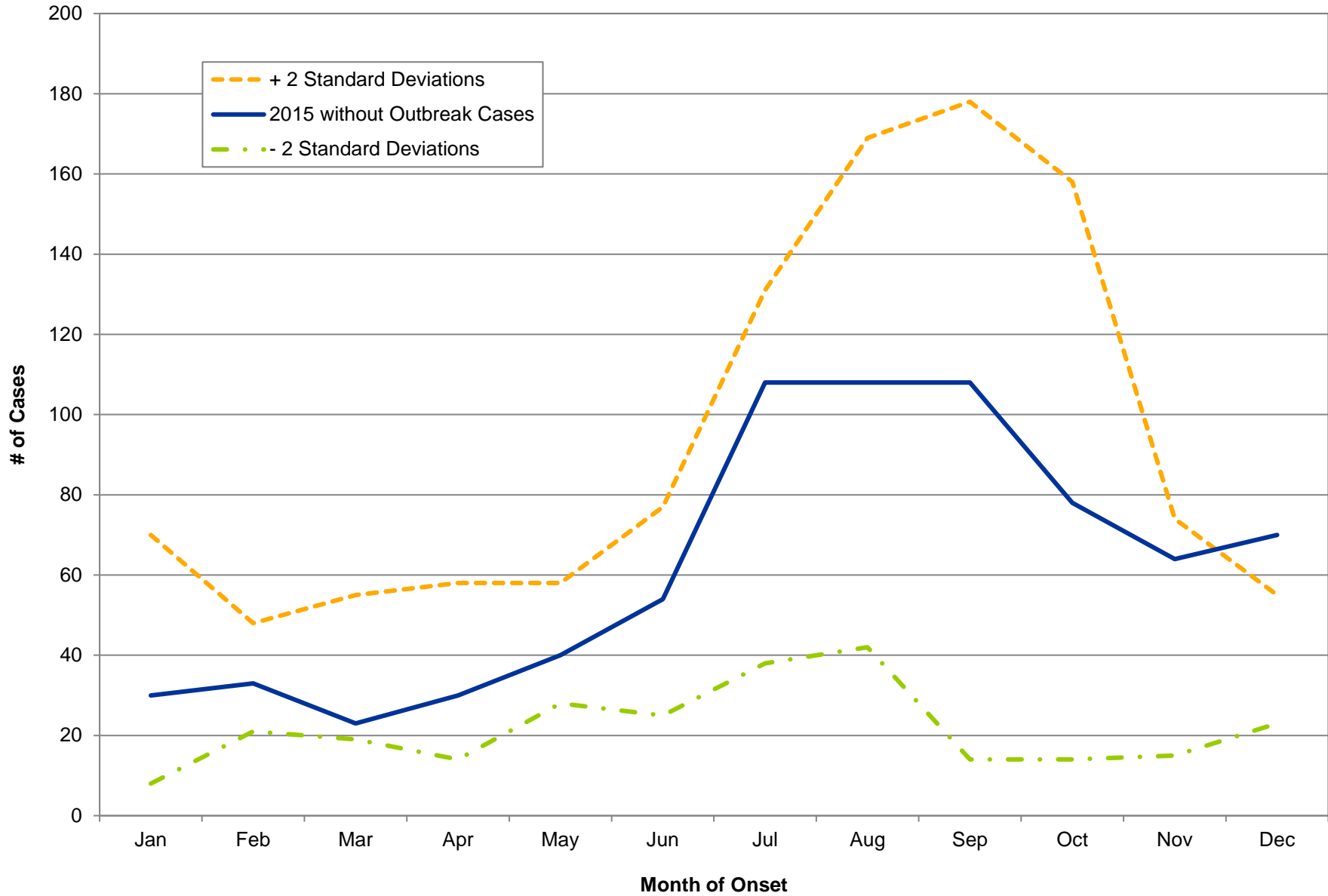
Lyme Disease



Baseline trends are 2 standard deviations of mean counts from 2012-2014 data.
Source of disease data: Ohio Disease Reporting System.

INCIDENCE TRENDS BY MONTH OF ONSET, OHIO, 2015

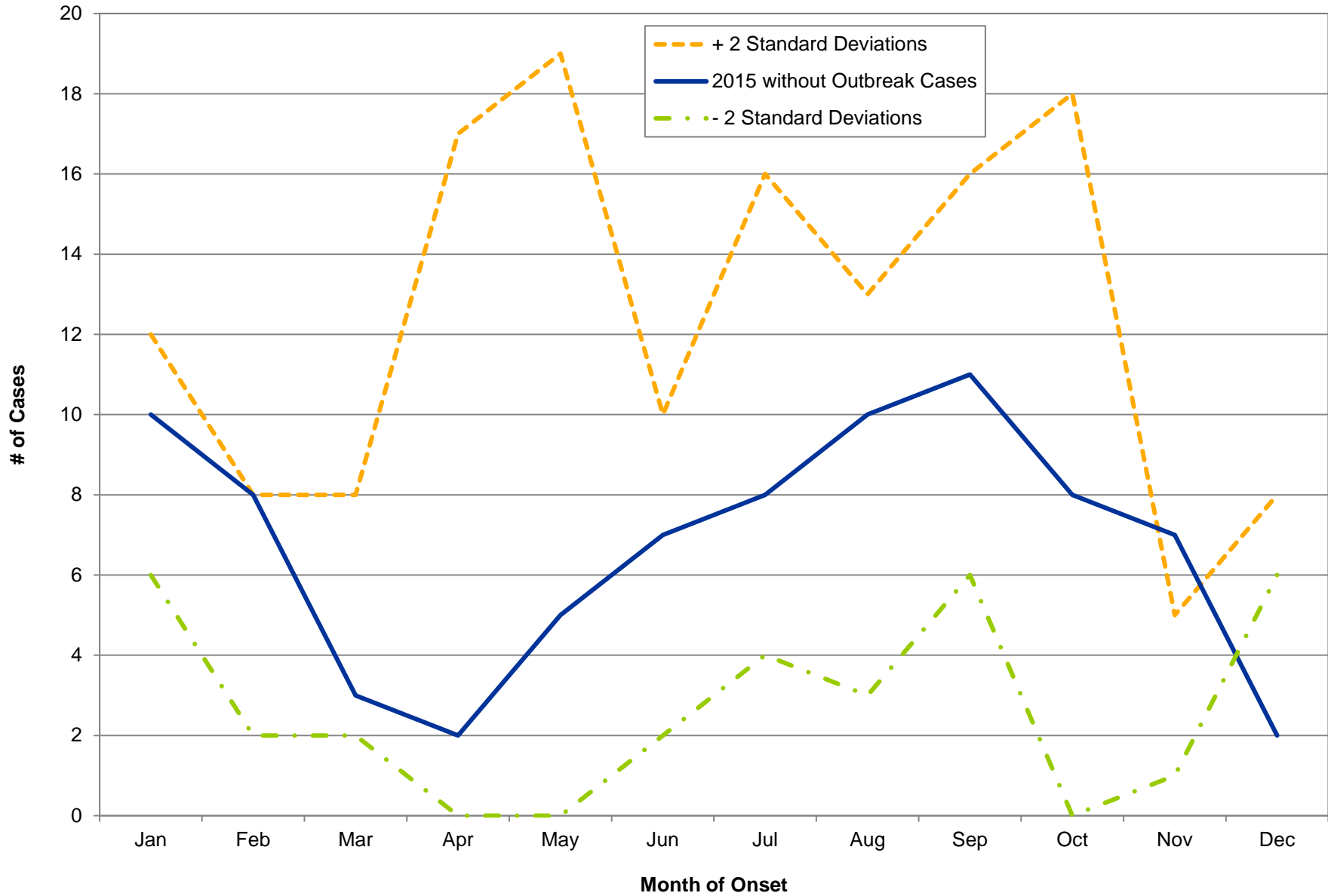
Meningitis, Aseptic



Baseline trends are 2 standard deviations of mean counts from 2012-2014 data.
Source of disease data: Ohio Disease Reporting System.

INCIDENCE TRENDS BY MONTH OF ONSET, OHIO, 2015

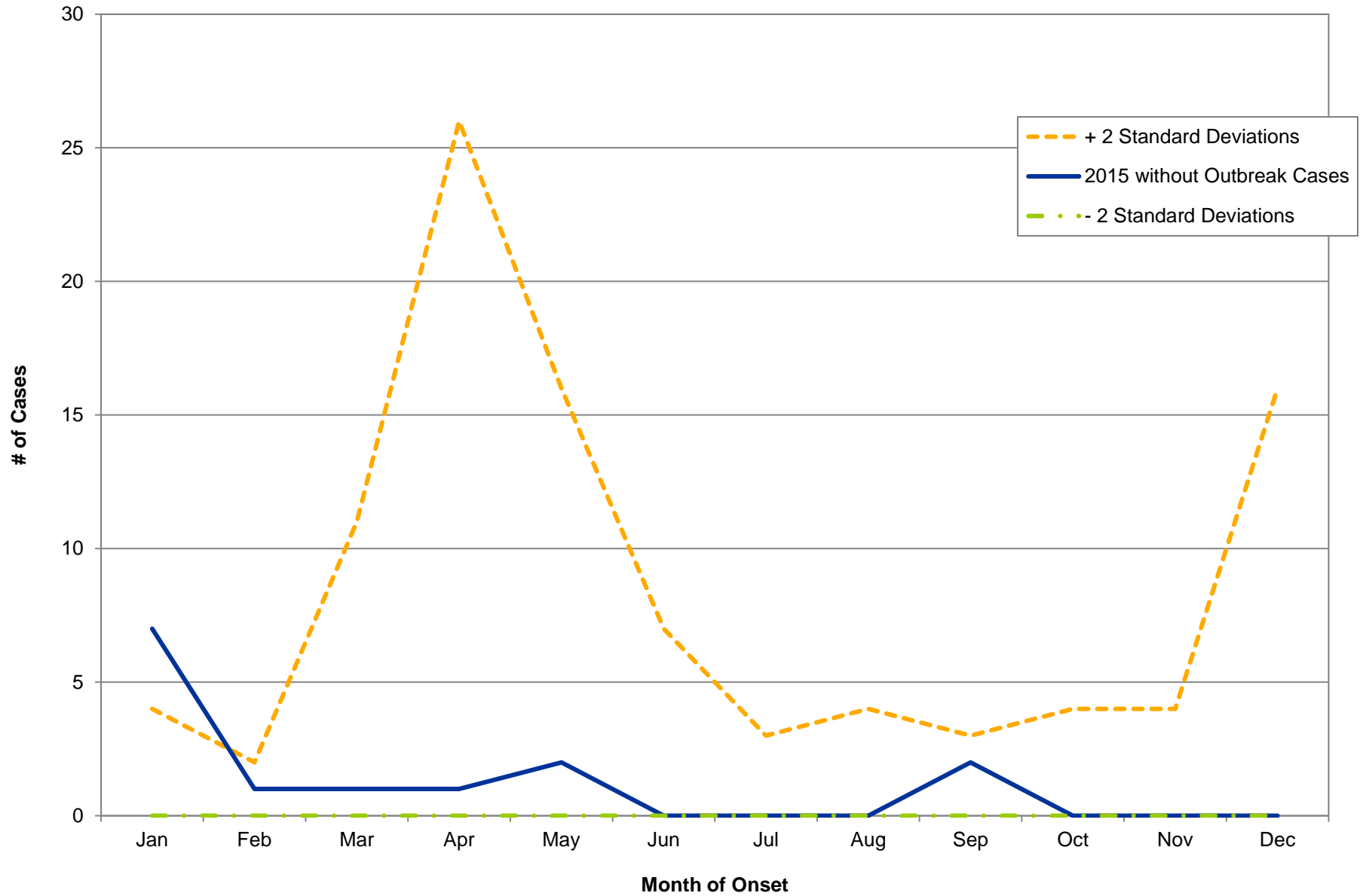
Meningitis, Other Bacterial



Baseline trends are 2 standard deviations of mean counts from 2012-2014 data.
Source of disease data: Ohio Disease Reporting System.

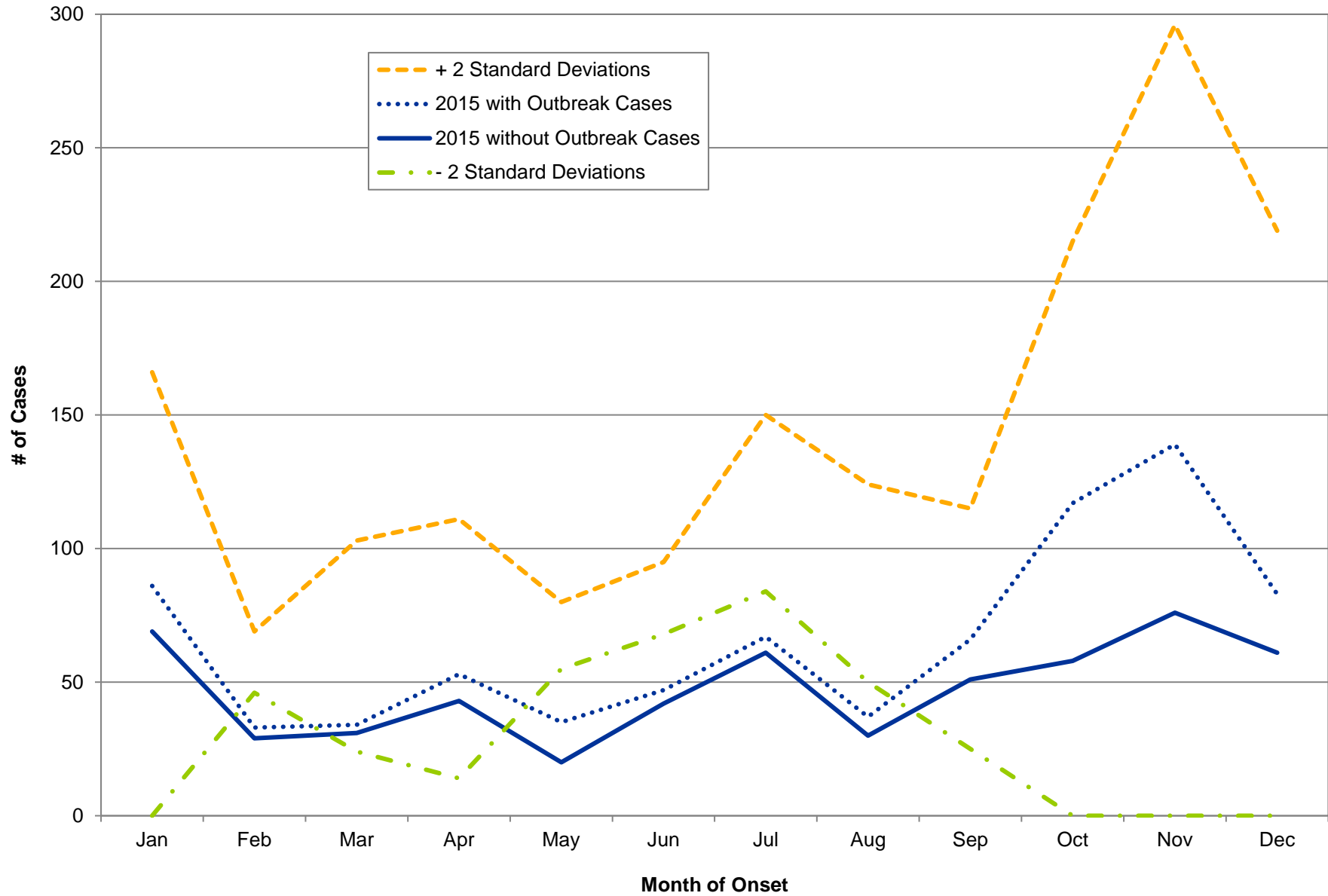
INCIDENCE TRENDS BY MONTH OF ONSET, OHIO, 2015

Mumps



Baseline trends are 2 standard deviations of mean counts from 2012-2014 data.
Source of disease data: Ohio Disease Reporting System.

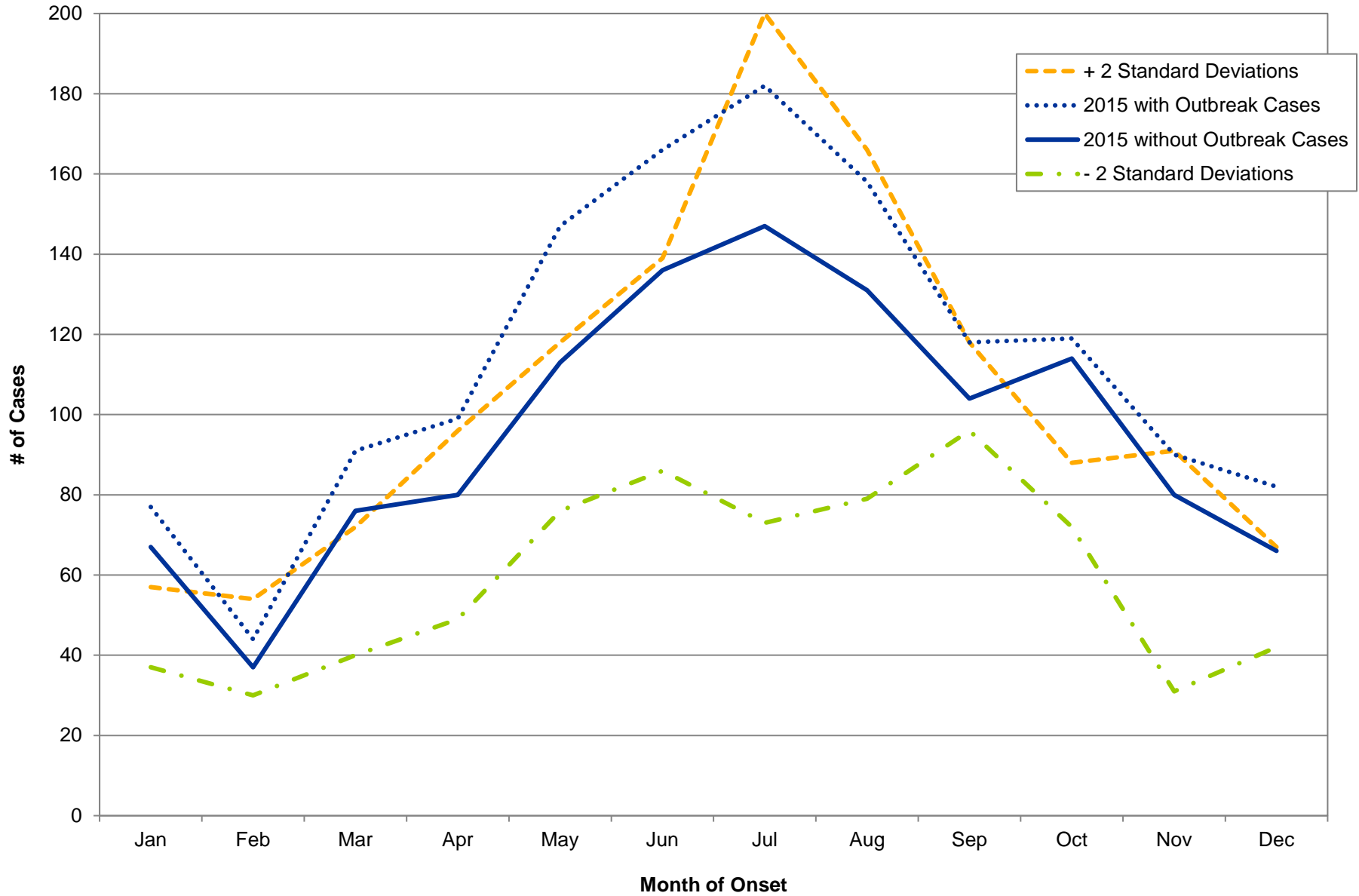
INCIDENCE TRENDS BY MONTH OF ONSET, OHIO, 2015 Pertussis



Baseline trends are 2 standard deviations of mean counts from 2012-2014 data.
Source of disease data: Ohio Disease Reporting System.

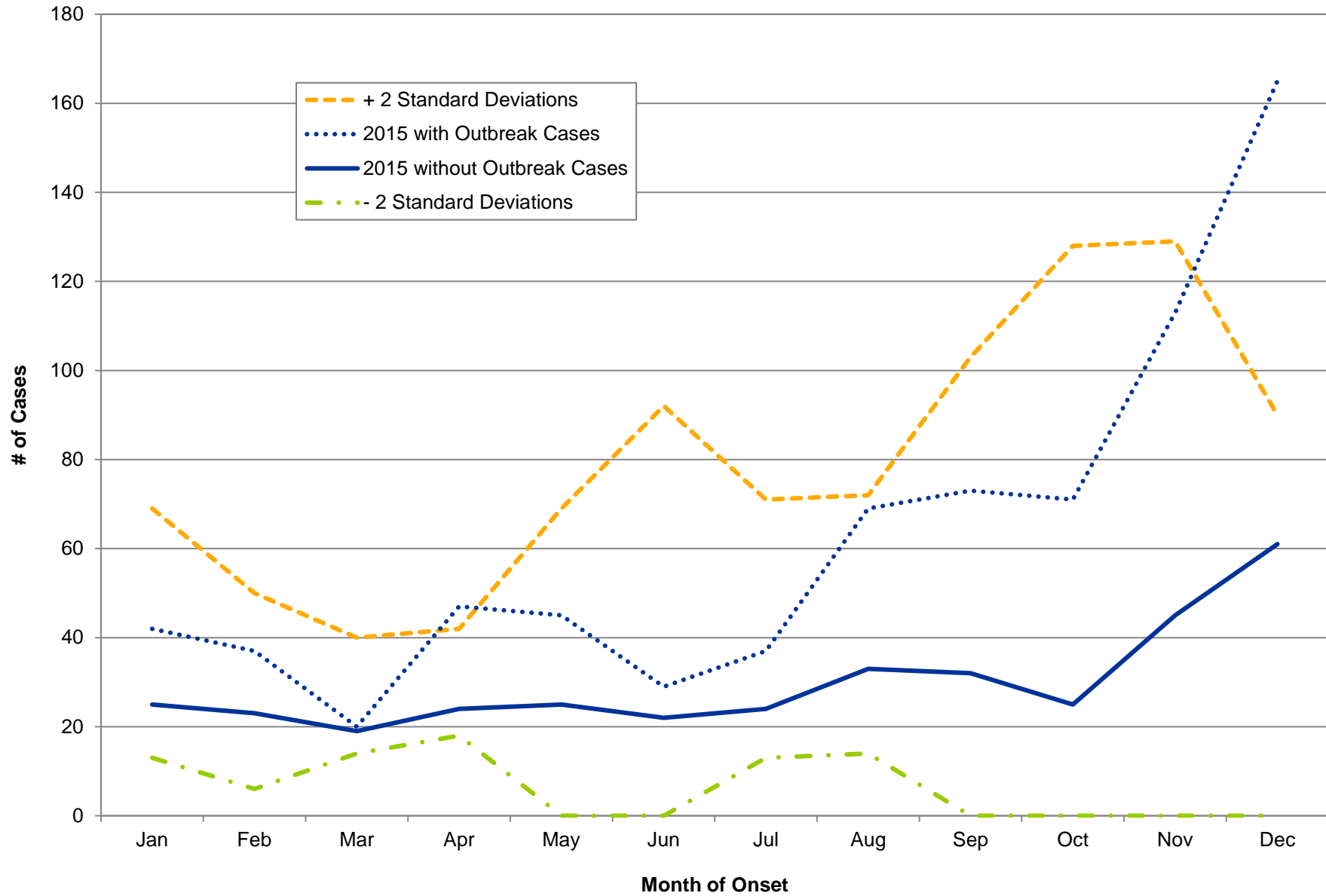
INCIDENCE TRENDS BY MONTH OF ONSET, OHIO, 2015

Salmonellosis



Baseline trends are 2 standard deviations of mean counts from 2012-2014 data.
Source of disease data: Ohio Disease Reporting System.

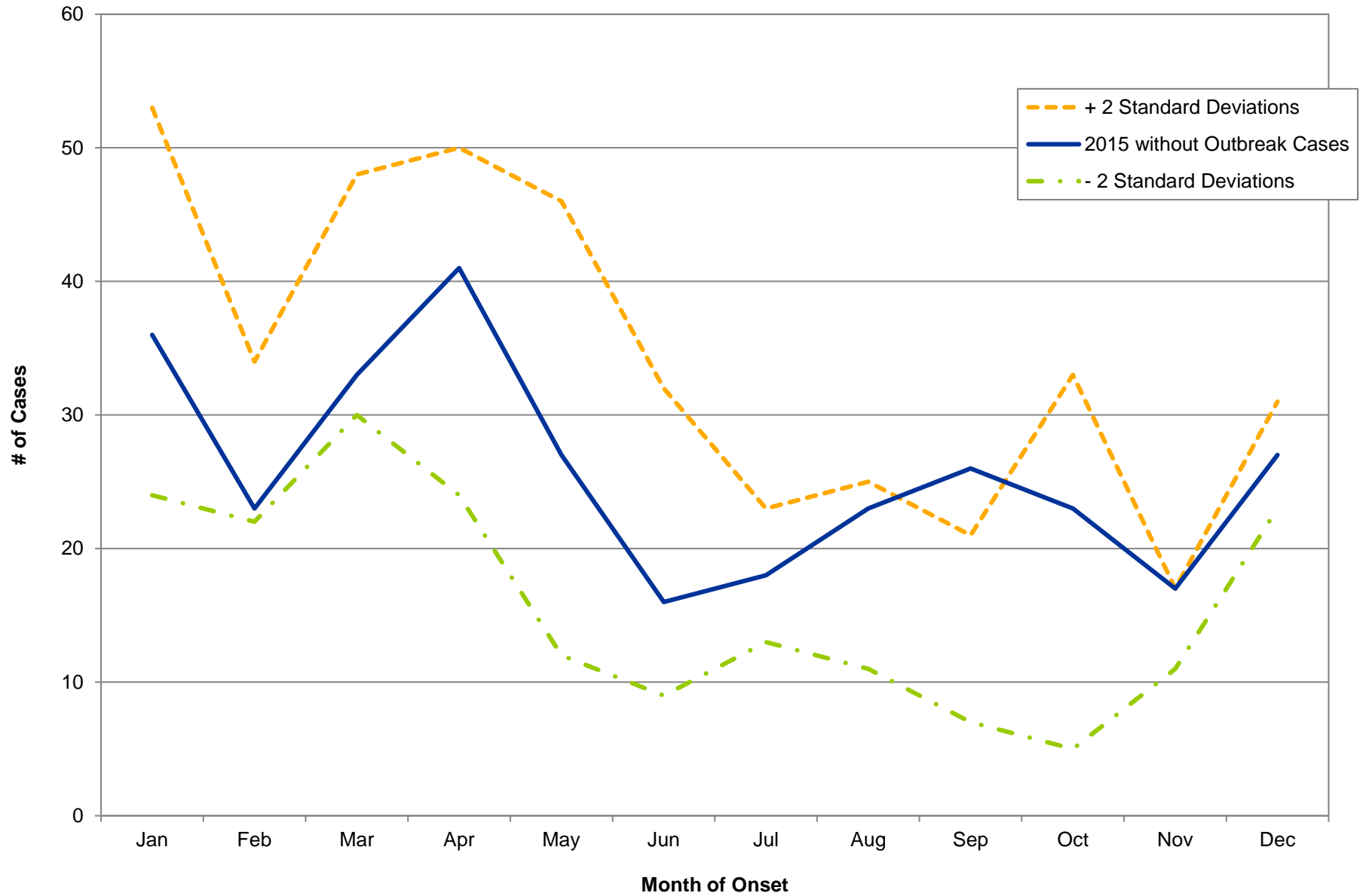
INCIDENCE TRENDS BY MONTH OF ONSET, OHIO, 2015 Shigellosis



Baseline trends are 2 standard deviations of mean counts from 2012-2014 data.
Source of disease data: Ohio Disease Reporting System.

INCIDENCE TRENDS BY MONTH OF ONSET, OHIO, 2015

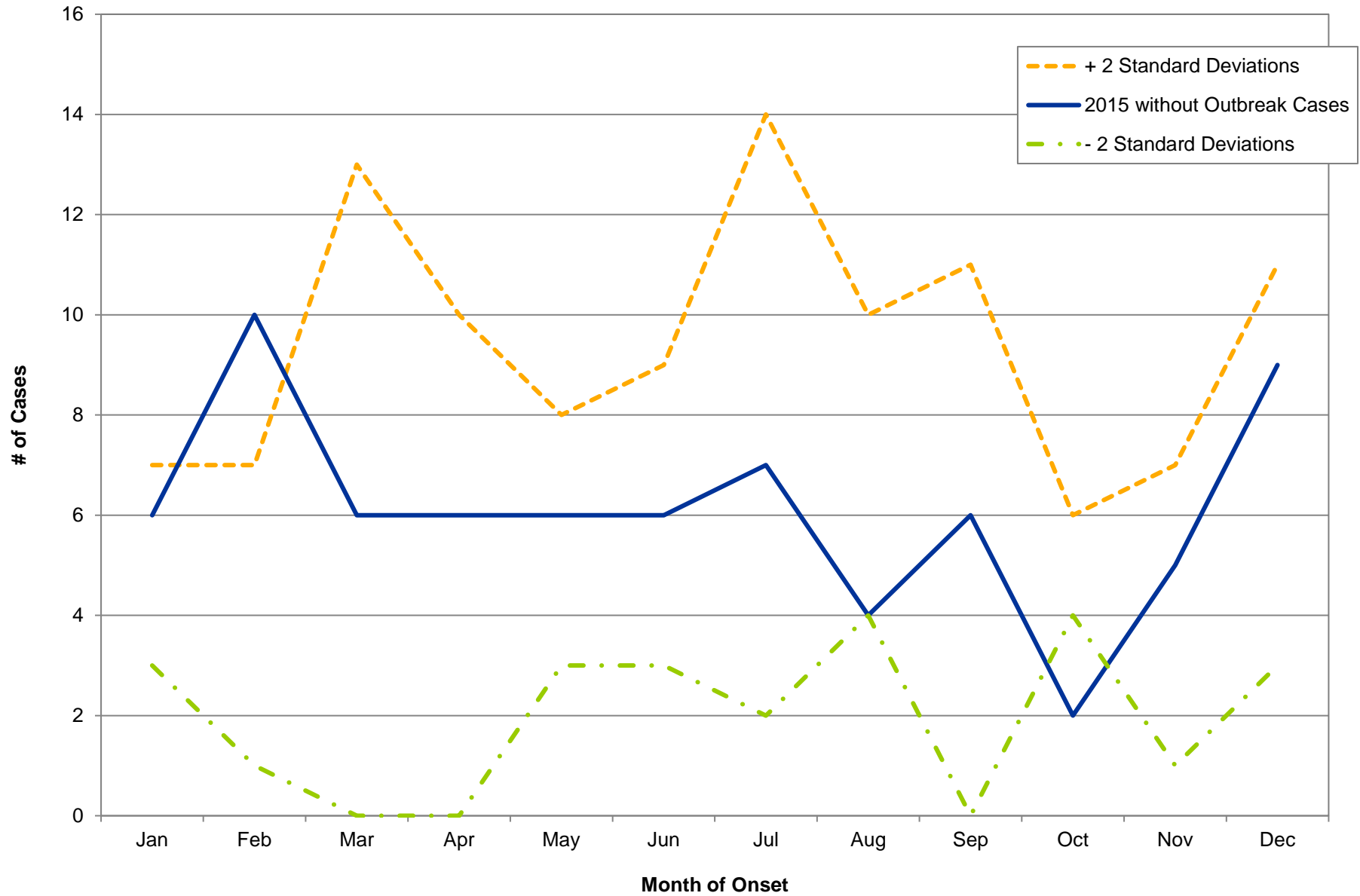
Streptococcal Disease, Group A, Invasive



Baseline trends are 2 standard deviations of mean counts from 2012-2014 data.
Source of disease data: Ohio Disease Reporting System.

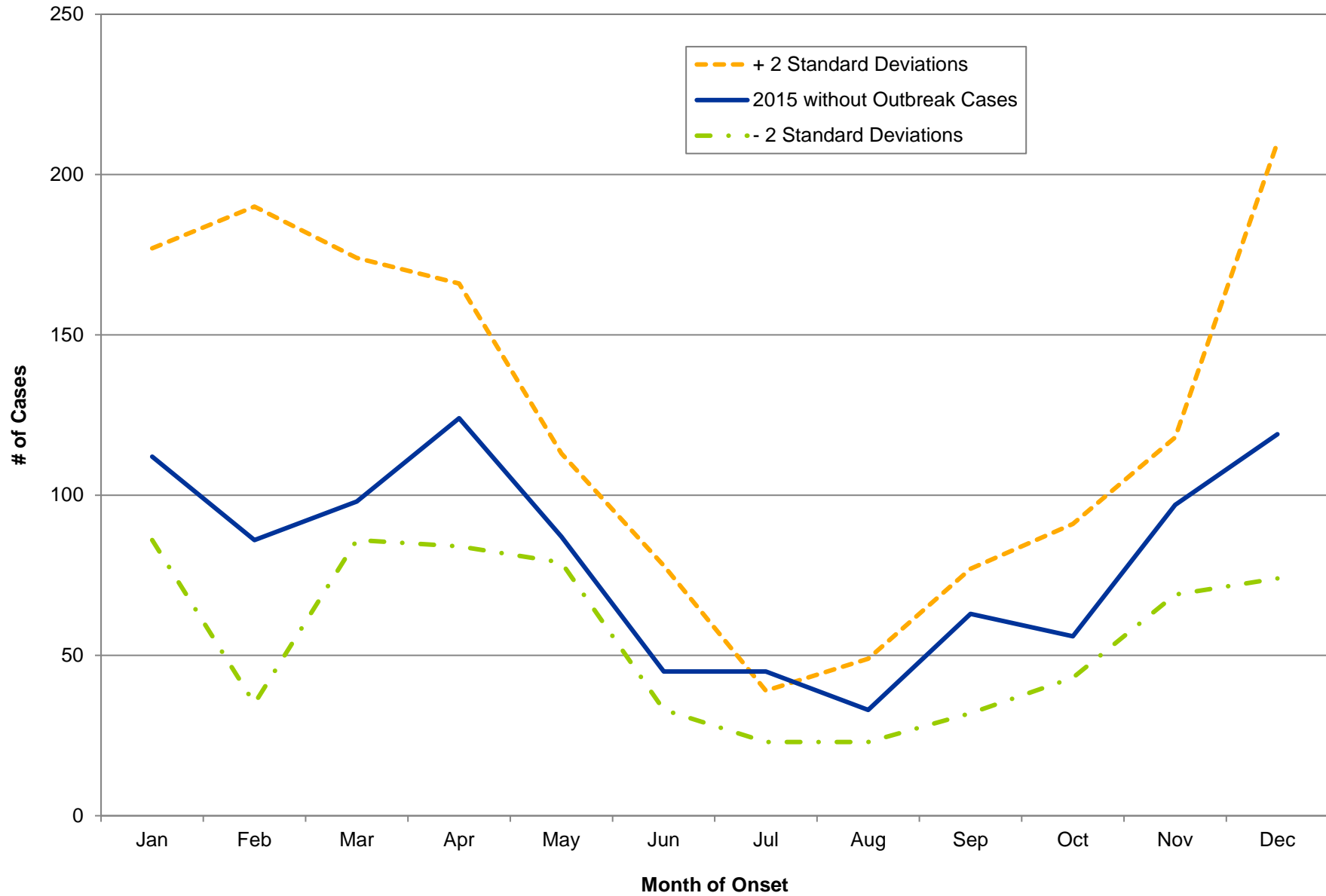
INCIDENCE TRENDS BY MONTH OF ONSET, OHIO, 2015

Streptococcal Disease, Group B, in Newborn



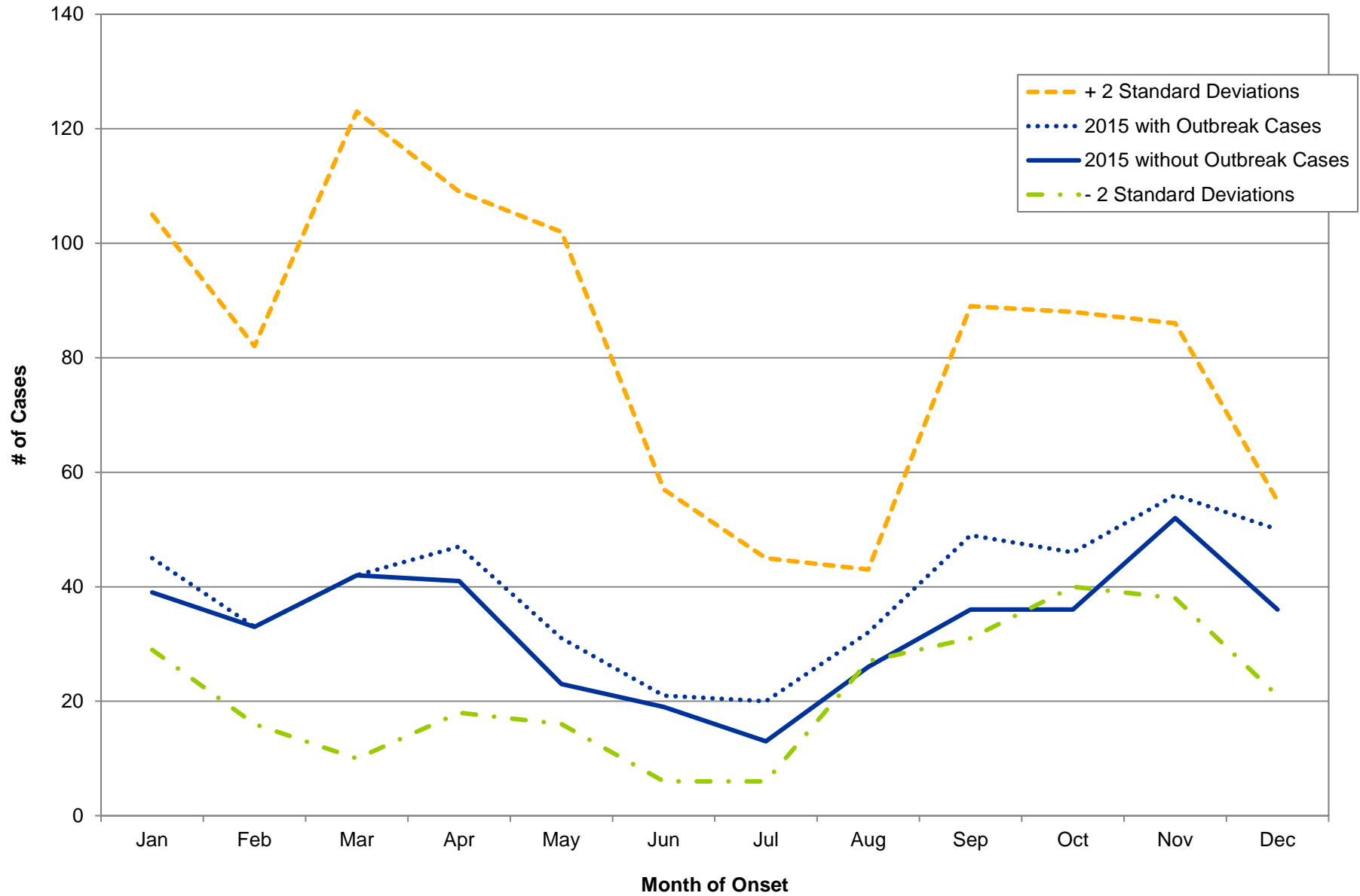
Baseline trends are 2 standard deviations of mean counts from 2012-2014 data.
Source of disease data: Ohio Disease Reporting System.

INCIDENCE TRENDS BY MONTH OF ONSET, OHIO, 2015 *Streptococcus pneumoniae*, Invasive Disease



Baseline trends are 2 standard deviations of mean counts from 2012-2014 data.
Source of disease data: Ohio Disease Reporting System.

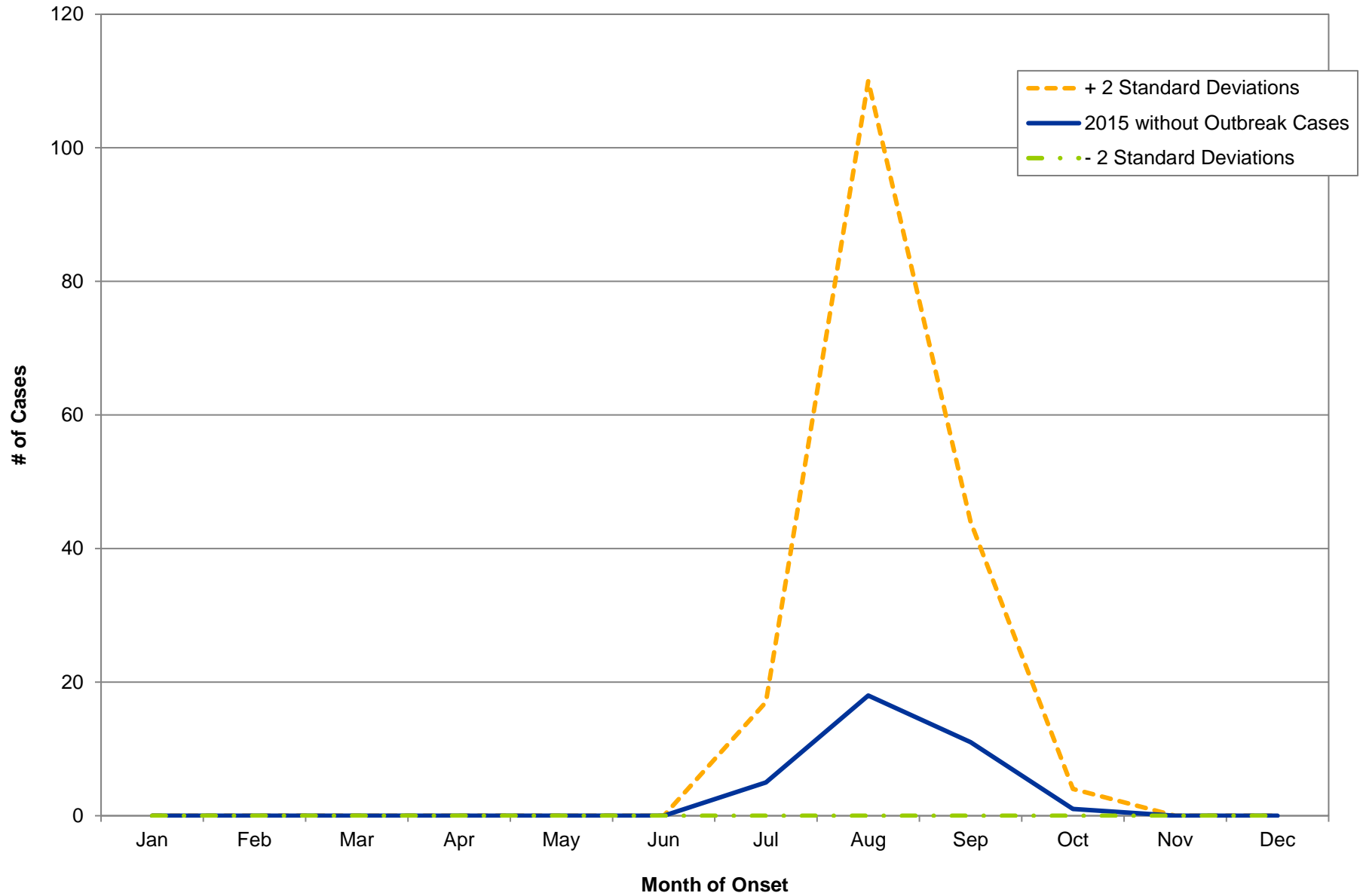
INCIDENCE TRENDS BY MONTH OF ONSET, OHIO, 2015 Varicella



Baseline trends are 2 standard deviations of mean counts from 2012-2014 data.
Source of disease data: Ohio Disease Reporting System.

INCIDENCE TRENDS BY MONTH OF ONSET, OHIO, 2015

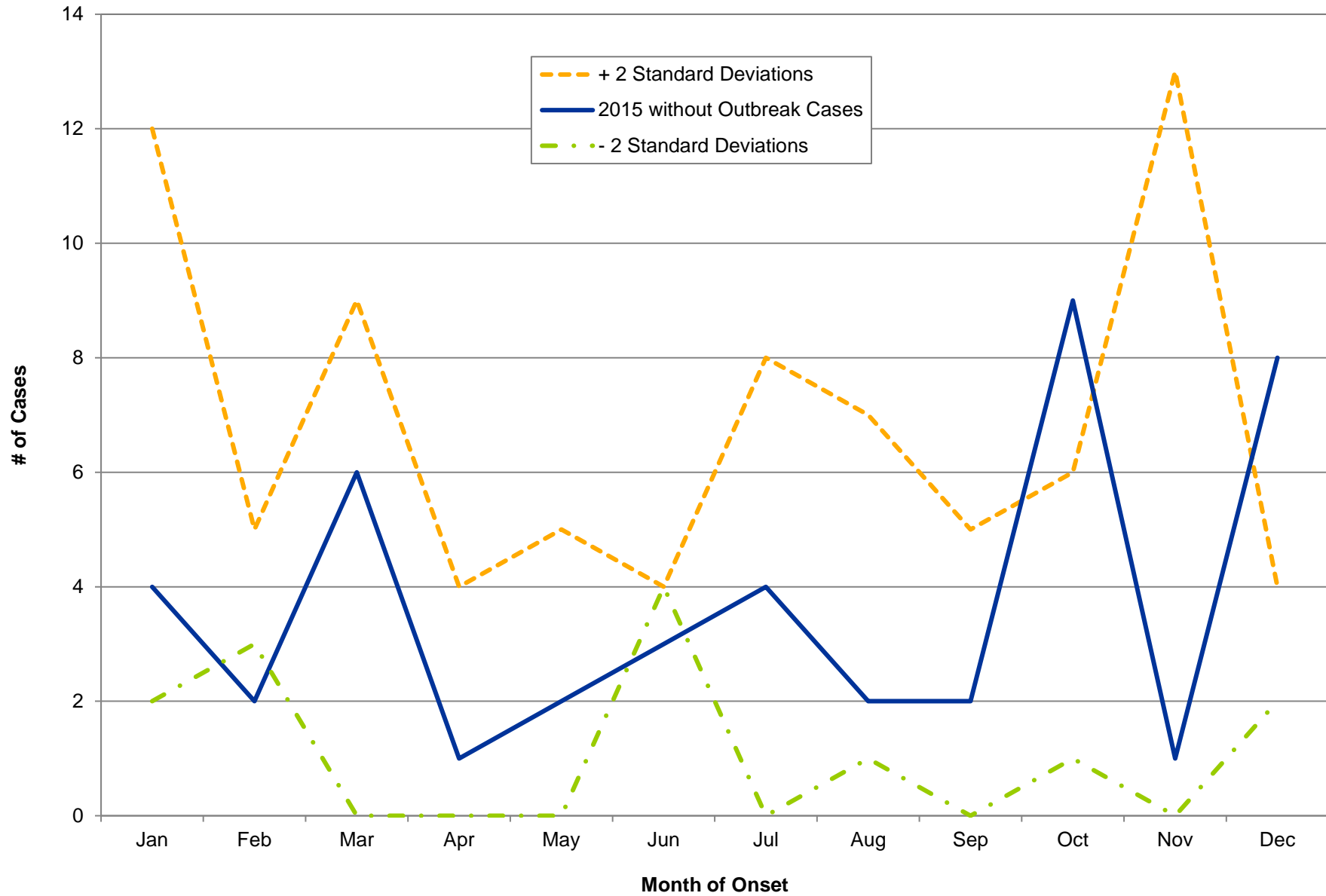
West Nile Virus Infection



Baseline trends are 2 standard deviations of mean counts from 2012-2014 data.
Source of disease data: Ohio Disease Reporting System.

INCIDENCE TRENDS BY MONTH OF ONSET, OHIO, 2015

Yersiniosis



Baseline trends are 2 standard deviations of mean counts from 2012-2014 data.
Source of disease data: Ohio Disease Reporting System.